

# TIRE CHANGER

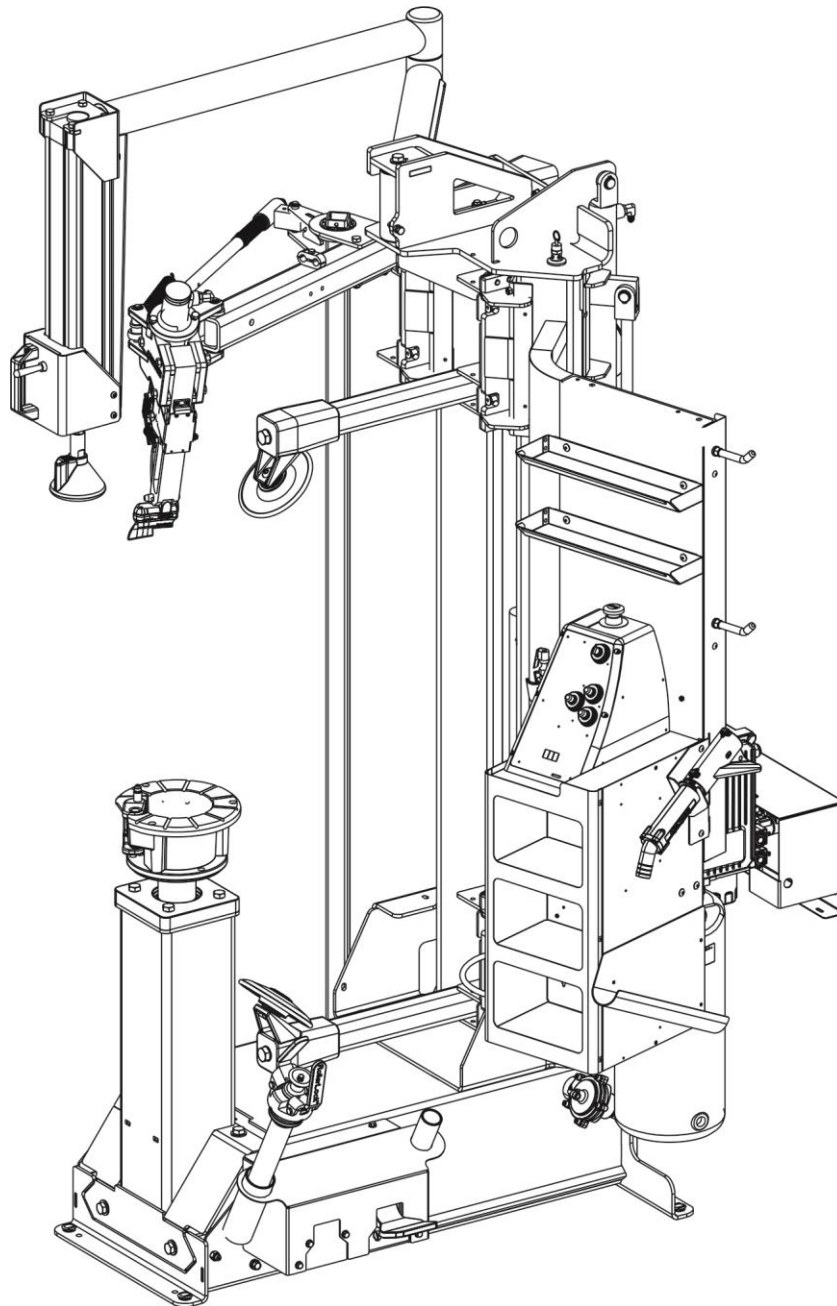
MAVERICK

**HUNTER**  
Engineering Company

## PARTS DRAWING



Form CD08066-00, 10-24  
Supersedes CD08066-00,, 12-23a  
Sheet 1 of 18



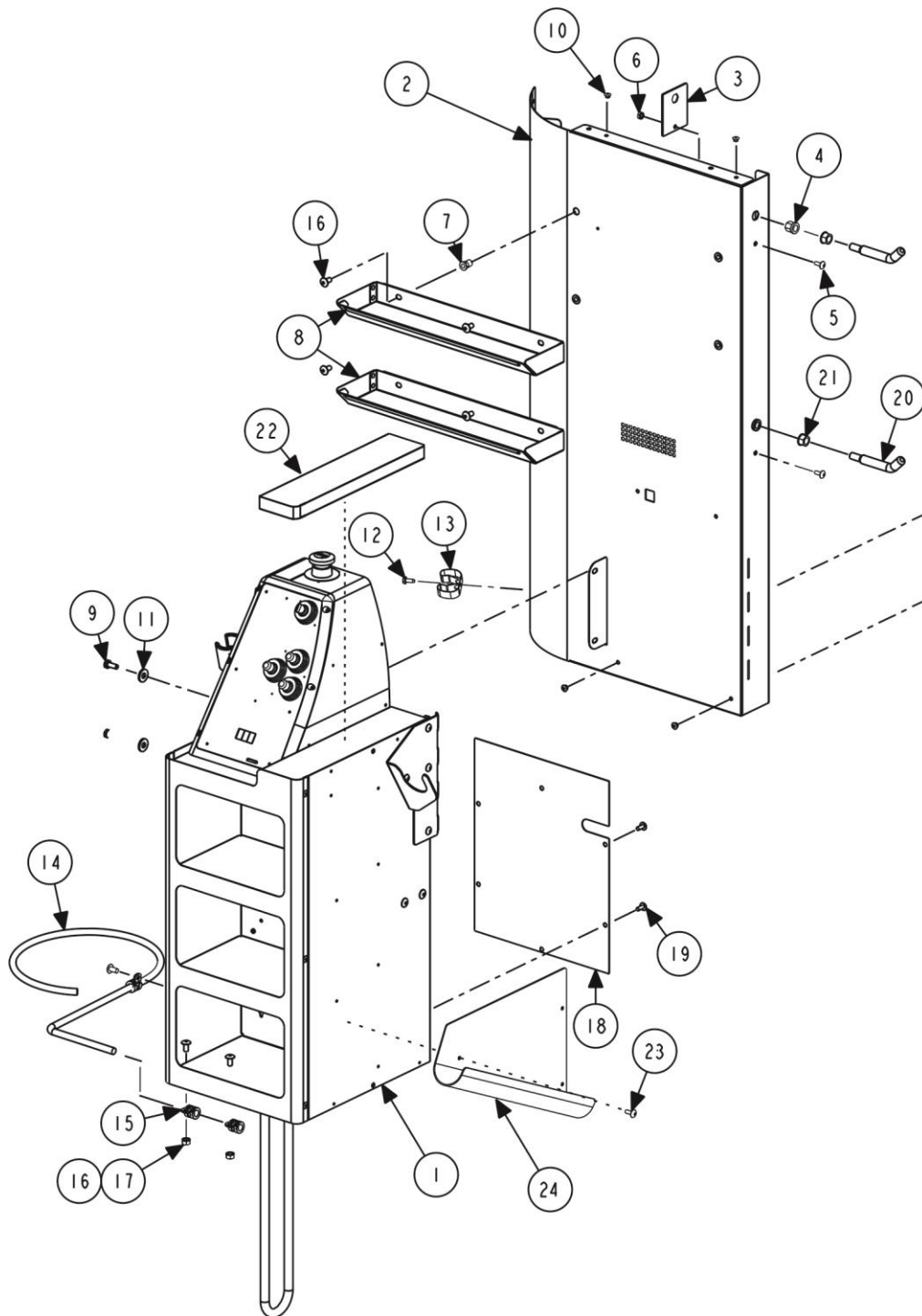


Sheet No.	Description
3	PANEL WITH SHELVES AND CONSOLE
4	CONSOLE – SINGLE PHASE
5	CONSOLE – THREE PHASE
6	CONSOLE DETAILS
7	PEDALS
8	BLAST INFLATION
9	BEAD PRESS
10	MOUNT HEAD ARM AND LINKAGE
11	MOUNT HEAD ASSEMBLY
12	UPPER AND LOWER BEAD ROLLERS
13	SPINDLE CARRIAGE
14	CLAMPING
15	POWER UNIT AND MANIFOLD
16	POWER UNIT REPLACEMENT PARTS
17	BACK SIDE – HYDRAULICS AND COVERS
18	WHEEL LIFT

**KIT 20-3913-1, ACCESSORY TCM**

Index No.	Part Number	Description	Qty.
1	RP11-2020688	VALVE PULLER	1
2	221-759-2	TOOL-VALVE CORE TORQUE DRIVER	1
3	221-810-2	TOOL-MOUNT/DEMOUNT	1
4	221-659-2	TOOL-ADHESIVE WEIGHT REMOVER	1
5	75-312-2	THMS 10-32X1/2 PR BZ	3
6	179-15-2	SHIELD-SAFETY GOGGLES	1
7	63-85-2	ROD-HOOK	2
8	64-195-2	PAD- WRIST REST- TC CONSOLE	1
9	76-159-2	NUT-KEPS 3/8-16 ZP	2
10	213-58-1	MIRROR - TCM FIXED ASM	1
11	RP6-3784	HUNTER TIRE MOUNTING PASTE	1
12	117-234-005	HOLSTER- TCM WHEEL CLAMP	1
13	69-1392-2	COVER-PLATEN RUBBER	2
14	69-1394-2	COVER-ANTIROTATE PIN	2
15	192-226-1	CONE-TC WHEEL CLAMP	2
16	192-223-2	CONE-SMALL BORE_SPEEDNUT	1
17	192-233-1	CONE-MEDIUM CLAMPING	2
18	RP6-1506	BRUSH-ANGLED PASTE APPLICATOR	1
19	111-154-3	ASSY- BEAD ROLLER	1





## PANEL WITH SHELVES AND CONSOLE

REFER TO NEXT SHEET FOR PARTS DESCRIPTION LISTING

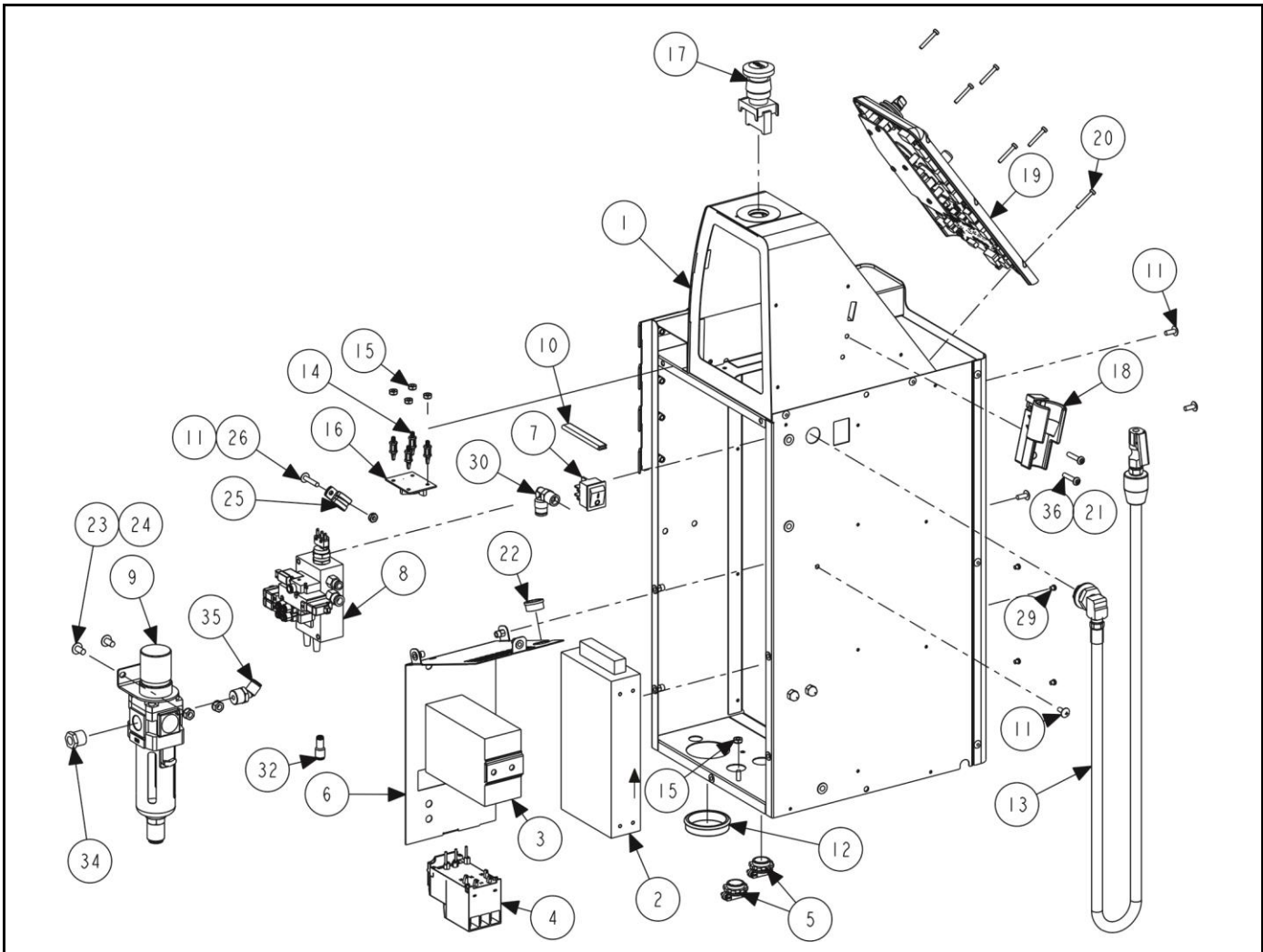
Index No.	Part Number	Description	Qty.
1	30-596-1	CONSOLE ASM – TCM (See Sheet 4)	1
OR	30-603-1	CONSOLE ASM - TCM- E435 (Export only – 3 phase) (See Sheet 5)	1
2	73-1222-1*	PANEL- UPPR REAR- TCM CONSOLE (contains)	1
3	51-3367	PLATE- DBLR- UPR CONSOLE PNL	2
4	76-296-2	NUT-INSERT 3/8-16 HEX	2
5	75-312-2	THMS 10-32X1/2 PR BZ	2
6	76-61-2	NUT-KEPS 10-32 ZP	2
7	76-414-2	NUT-HEX INSERT 1/4-20	4
8	215-201-005	SHELF-UTILITY, TCR1S CONSOLE	2
9	75-908-2	THMS 1/4-20X1/2 PR BZ	2
OR	75-333-2	HHCS 1/4-20X.63 FTHD ZP (previous)	2
10	75-936-2	PHSMS 10 X 1/2 BZ (rivet shown was previous design)	5
11	77-67-2	WASHER-FLAT 1/4 TPA-W ZP (previous)	2
12	75-936-2	PHSMS 10 X 1/2 BZ	1
13	28-175-2	HOLDER-TOOL-3/4" TO 1-1/8" DIA	1
14	14-1883-2	BRACKET-PASTE BUCKET HOOP-BLK	1
15	12-284-2	CLAMP-P-3/8 DIA-1/4 MNT HOLE	3
16	75-908-2	THMS 1/4-20X1/2 PR BZ	7
17	76-85-2	NUT-KEPS 1/4-20 ZP	2
18	73-1223-PPP	PANEL- LWR REAR- TCM CONSOLE	1
19	75-312-2	THMS 10-32X1/2 PR BZ	6
20	63-85-2	ROD-HOOK	REF
21	76-159-2	NUT-KEPS 3/8-16 ZP	REF
22	64-195-2	PAD- WRIST REST- TC CONSOLE	REF
23	75-312-2	THMS 10-32X1/2 PR BZ	3
24	117-234-005	HOLSTER- TCM WHEEL CLAMP	1

\* Decal 128-1965-2 (TCM MAVERICK) and Decal 128-1363-2 (MADE USA #3) and Decal 128-1901-2 (SOCIAL MEDIA) are on this part

**COMPOSITE DECAL**

Composite decal 128-1945-3 contains many safety and informative decals. See below image of composite.





**WIRING WITHIN CONSOLE**

INDEX	PART #	DESCRIPTION	ZIP TIE	CONNECTION 1	CONNECTION 2	CONNECTION 3
-	38-1394-1	TOOL HOOK SWITCH		45-1817-1 J10	HOOK SWITCH	
41	37-810-1	INFLATION PRESSURE/ HOLSTER SWITCH		45-1817-1 J9	HOLSTER SWITCH	PRES. SWITCH
43	37-809-1	AIR PRESSURE SENSOR		45-1817-1 J1	AIR PRESSURE SENSOR	
-	38-1402-1	LOWER ROLLER POT	ORANGE	45-1817-1 J24	LOWER ROLLER POT	
-	38-1403-1	ROTATE PEDAL	GRN, BLK	45-1817-1 J2	ROTATE PEDAL POT	
-	38-1403-1	WHEEL LIFT (OPT) PEDAL	GRN, BLK	45-1817-1 J3	WHL LIFT PEDAL POT	
45	37-808-1	ESTOP / RELAY / PWR SP		45-1817-1 J26	ESTOP (WHT WIRES)	24VDC PWR SP
38	38-1396-1	CONTACTOR TO HPU		CONTACTOR	HPU	
39	38-1397-1	AC POWER INPUT TO CONTACTOR		AC MAIN INPUT	CONTACTOR ( L1, L2, STUD)	
42	37-800-1	AC POWER CONTACTOR TO SWITCH SWITCH TO 24V PWR SP		19-286-2 TO CONTACTOR	19-206-2 TO POWER SUPPLY	PWR SWITCH 18-270-2 FROM CONT.
40	38-1398-1	HYDRAULIC VALVES - 1	BLUE	45-1817-1 J13	SEE SHEET 15	
40	38-1398-1	HYDRAULIC VALVES - 2	BLUE,ORG	45-1817-1 J14	SEE SHEET 15	
40	38-1398-1	HYDRAULIC VALVES - 3	BLUE,YEL	45-1817-1 J15	SEE SHEET 15	
40	38-1398-1	HYDRAULIC VALVES - 4	BLUE,GRN	45-1817-1 J20	SEE SHEET 15	
44	37-803-1	AIR VALVES:INDENT/INFLA.	SHEET 6	45-1817-1 J19	SEE SHEET 6	
-	37-802-1	MTC AIR VALVES (OPT WL)		45-1817-1 J18	SEE SHEET 6	

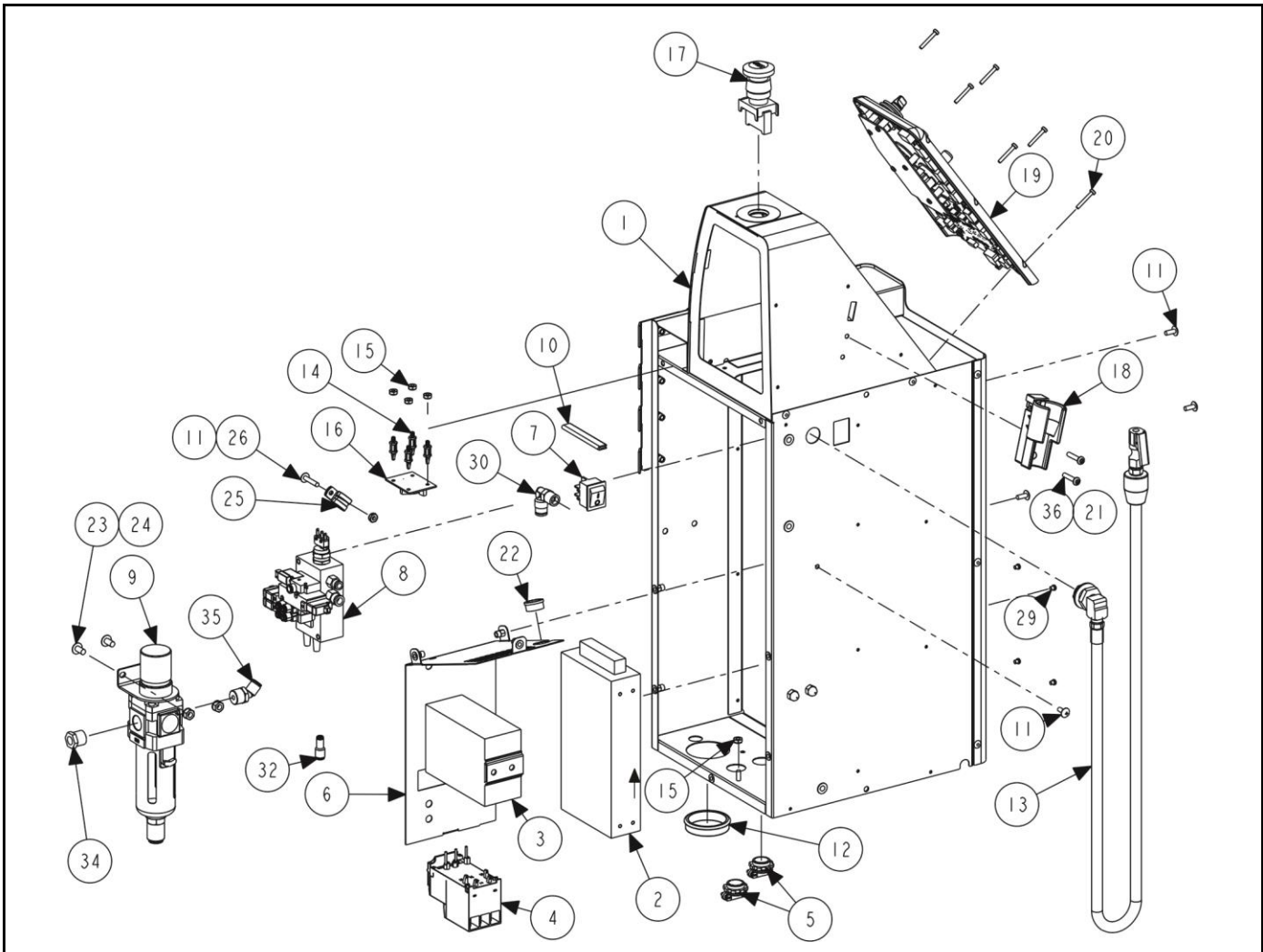
**CONSOLE - SINGLE PHASE**

REFER TO NEXT SHEET FOR PARTS DESCRIPTION LISTING

## SINGLE PHASE CONSOLE

Index No.	Part Number	Description	Qty.
	30-596-1*	CONSOLE ASM – TCM (Consisting Of:)	
1	30-595-1	CONSOLE ASM – TCM (See Sheet 6)	1
2	232-404-2	PWR SUPPLY - 24VDC 200W	1
3	18-537-2	DC CONTACTOR/NOISE SUPPRESSOR	1
4	18-636-2	RELAY - CONTACTOR OVERLOAD 1P	1
5	12-27-2	CLAMP-CABLE 1/2IN	2
6	105-836-1	ENCL ASM - HI VOLT - TCM CNSL	1
7	18-270-2	SWITCH-DPST ROCKER	1
8	145-536-3	MANIFOLD ASM-PNEU TC2 (See Sheet 6)	1
9	136-106-2	FILTER REGULATOR WITH GAGE	1
10	141-28-2	EXTRUSION-PANEL OPENING	12 IN
11	75-312-2	THMS 10-32X1/2 PR BZ	6
12	113-322-2	BUSHING-HEYCO 2406	1
13	137-155-1	HOSE-TC TIRE FILL 72" (Contains:)	1
-	145-341-2	FITTING-AIR CHUCK LOCK-ON OPEN	
14	46-845-2	STANDOFF- SNAP-IN - 5/32 HOLE	4
15	76-71-2	NUT-KEPS 8-32 ZP	4
16	45-1645-1	PCA-PRESSURE SENSOR G2	1
17	18-562-2	SWITCH-EMERGENCY STOP, TC	1
18	105-721-1	ASSY - INFLATION STATION (Contains:)	1
-	18-350-2	SWITCH-SUBMINIATURE LIMIT	1
19	149-392-1	BEZEL ASM - TC CONSOLE (See Sheet 6)	1
20	75-501-2	PHMS 6-32X1.00 PR BZ	6
21	76-263-2	NUT-LOCK 10-32 NYLON INSERT ZP	2
22	113-270-2	BUSHING - HEYCO 2103 .812X.625	1
23	75-908-2	THMS 1/4-20X1/2 PR BZ	2
24	76-85-2	NUT-KEPS 1/4-20 ZP	2
25	12-274-2	CLAMP-P CLIP 1/2 ID RUBBER	1
26	76-61-2	NUT-KEPS 10-32 ZP	2
27	16-864-2	TUBING-AIR .17 ID .25 OD POLYU	10.5 IN
28	16-986-2	TUBE-5/16IN OD BLACK	12.5 IN
29	75-962-2	PHMS M4 X .7 X 4MM PR BZ	4
30	145-183-2	FITTING-1/4IN NPT ELBOW SWIVEL	1
31	16-450-2	TUBE-AIR 5/32 OD	6
32	145-403-2	FITTING-1/4 - 5/32 REDUCER	1
33	137-96-1	HOSE ASSY-PNEUMATIC SUPPLY	1
34	145-51-2	3/8 X1/4 REDUCER BUSHING	1
35	145-538-2	FTNG-3/8MNPT TO 5/16 PTC 45 EL	1
36	75-850-2	SHCS 10-32X1.0 FTHD ZP	2
37	16-363-2	TUBING-NYLON 3/8IN OD	3.25 IN
38	38-1396-1	CABLE ASM-MTC RELAY TO HPU	1
39	38-1397-1	CABLE ASM-MTC AC POWER INPUT	1
40	38-1398-1	CABLE ASM-MTC HYD VALVES	4
41	37-810-1	WIRE ASM - MTC INFL SWITCHES	1
42	37-800-1	WIRE ASM-MTC AC POWER	1
43	37-809-1	WIRE ASM-MTC PRESSURE SENSOR	1
44	37-803-1	WIRE ASM-MTC AIR VALVE X4 (See sheet 6)	1
45	37-808-1	WIRE ASM-MTC PWR/ESTOP/RELAY	1

\* Decal 128-381-2 (NOT SERVICEABLE-WARNING) is on this part.



**WIRING WITHIN CONSOLE**

INDEX	PART #	DESCRIPTION	ZIP TIE	CONNECTION 1	CONNECTION 2	CONNECTION 3
-	38-1394-1	TOOL HOOK SWITCH		45-1817-1 J10	HOOK SWITCH	
41	37-810-1	INFLATION PRESSURE/ HOLSTER SWITCH		45-1817-1 J9	HOLSTER SWITCH	PRES. SWITCH
43	37-809-1	AIR PRESSURE SENSOR		45-1817-1 J1	AIR PRESSURE SENSOR	
-	38-1402-1	LOWER ROLLER POT	ORANGE	45-1817-1 J24	LOWER ROLLER POT	
-	38-1403-1	ROTATE PEDAL	GRN, BLK	45-1817-1 J2	ROTATE PEDAL POT	
-	38-1403-1	WHEEL LIFT (OPT) PEDAL	GRN, BLK	45-1817-1 J3	WHL LIFT PEDAL POT	
45	37-808-1	ESTOP / RELAY / PWR SP		45-1817-1 J26	ESTOP (WHT WIRES)	24VDC PWR SP
38	38-1276-1	OVERLOAD RELAY TO HPU		OVRLD RELAY	HPU	
39	38-1422-1	3PH POWER INPUT TO CONTACTOR		AC MAIN INPUT	CONTACTOR (BLK-1L1 ORG-3L2 RED GRN)	
42	37-835-1	AC POWER CONTACTOR TO SWITCH SWITCH TO 24V PWR SP		19-286-2 TO CONTACTOR	19-206-2 TO POWER SUPPLY	PWR SWITCH 18-270-2 FROM CONT.
40	38-1398-1	HYDRAULIC VALVES - 1	BLUE	45-1817-1 J13	SEE SHEET 15	
40	38-1398-1	HYDRAULIC VALVES - 2	BLUE,ORG	45-1817-1 J14	SEE SHEET 15	
40	38-1398-1	HYDRAULIC VALVES - 3	BLUE,YEL	45-1817-1 J15	SEE SHEET 15	
40	38-1398-1	HYDRAULIC VALVES - 4	BLUE,GRN	45-1817-1 J20	SEE SHEET 15	
44	37-803-1	AIR VALVES:INDENT/INFLA.	SHEET 6	45-1817-1 J19	SEE SHEET 6	
-	37-802-1	MTC AIR VALVES (OPT WL)		45-1817-1 J18	SEE SHEET 6	

**CONSOLE - THREE PHASE**

REFER TO NEXT SHEET FOR PARTS DESCRIPTION LISTING

THREE PHASE CONSOLE

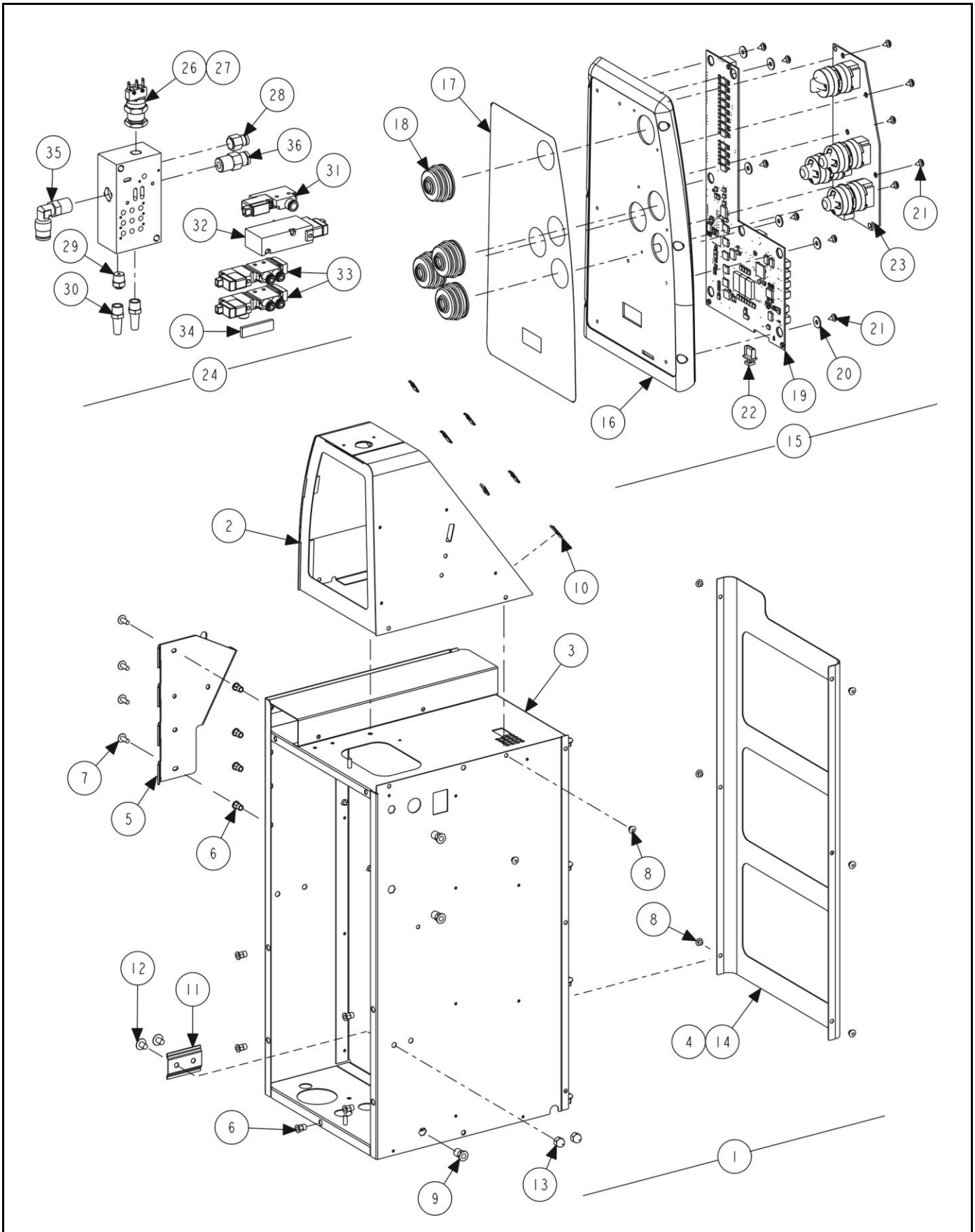
Index No.	Part Number	Description	Qty.
	30-603-1*	CONSOLE ASM – TCM E435 (Export only – 3 phase) (Consisting Of:)	
1	30-595-1	CONSOLE ASM – TCM (See Next Sheet)	1
2	232-404-2	PWR SUPPLY - 24VDC 200W	1
3	18-595-2	DC CONTACTOR/NOISE SUPPRESSOR	1
4	18-596-2	RELAY - OVERLOAD 7-10A	1
5	12-287-2	CLAMP-SCREW DOWN GRIP 3/4 K.O.	2
6	105-836-1	ENCL ASM - HI VOLT - TCM CNSL	1
7	18-270-2	SWITCH-DPST ROCKER	1
8	145-536-3	MANIFOLD ASM-PNEU TC2 (See Sheet 6)	1
9	136-106-2	FILTER REGULATOR WITH GAGE	1
10	141-28-2	EXTRUSION-PANEL OPENING	12 IN
11	75-312-2	THMS 10-32X1/2 PR BZ	6
12	113-322-2	BUSHING-HEYCO 2406	1
13	137-155-1	HOSE-TC TIRE FILL 72" (Contains:)	1
-	145-341-2	FITTING-AIR CHUCK LOCK-ON OPEN	
14	46-845-2	STANDOFF- SNAP-IN - 5/32 HOLE	4
15	76-71-2	NUT-KEPS 8-32 ZP	4
16	45-1645-1	PCA-PRESSURE SENSOR G2	1
17	18-562-2	SWITCH-EMERGENCY STOP, TC	1
18	105-721-1	ASSY - INFLATION STATION (Contains:)	1
-	18-350-2	SWITCH-SUBMINIATURE LIMIT	1
19	149-392-1	BEZEL ASM - TC CONSOLE (See sheet 6)	1
20	75-501-2	PHMS 6-32X1.00 PR BZ	6
21	76-263-2	NUT-LOCK 10-32 NYLON INSERT ZP	2
22	113-270-2	BUSHING - HEYCO 2103 .812X.625	1
23	75-908-2	THMS 1/4-20X1/2 PR BZ	2
24	76-85-2	NUT-KEPS 1/4-20 ZP	2
25	12-274-2	CLAMP-P CLIP 1/2 ID RUBBER	1
26	76-61-2	NUT-KEPS 10-32 ZP	2
27	16-423-2	TUBING-AIR 1/4 OD	10.5 IN
28	16-986-2	TUBE-5/16IN OD BLACK	12.5 IN
29	75-962-2	PHMS M4 X .7 X 4MM PR BZ	4
30	145-183-2	FITTING-1/4IN NPT ELBOW SWIVEL	1
31	16-450-2	TUBE-AIR 5/32 OD	6
32	145-403-2	FITTING-1/4 - 5/32 REDUCER	1
33	137-96-1	HOSE ASSY-PNEUMATIC SUPPLY	1
34	145-51-2	3/8 X1/4 REDUCER BUSHING	1
35	145-538-2	FTNG-3/8MNPT TO 5/16 PTC 45 EL	1
36	75-850-2	SHCS 10-32X1.0 FTHD ZP	2
37	16-363-2	TUBING-NYLON 3/8IN OD	3.25 IN
38	38-1276-1	CABLE ASM-RELAY TO MOTOR	1
39	38-1422-1	CABLE POWER 14/5, 400V 3PH TCM	1
40	38-1398-1	CABLE ASM-MTC HYD VALVES	4
41	37-810-1	WIRE ASM - MTC INFL SWITCHES	1
42	37-835-1	WIRE ASM-TCM 3PH POWER	1
43	37-809-1	WIRE ASM-MTC PRESSURE SENSOR	1
44	37-803-1	WIRE ASM-MTC AIR VALVE X4 (See sheet 6)	1
45	37-808-1	WIRE ASM-MTC PWR/ESTOP/RELAY	1

\* Decal 128-381-2 (NOT SERVICEABLE-WARNING) is on this part.



11250 HUNTER DRIVE BRIDGETON, MO 63044

PPP-Paint Code Required  
A/R-As Required  
REF-Reference



## CONSOLE DETAILS

REFER TO NEXT SHEET FOR PARTS DESCRIPTION LISTING

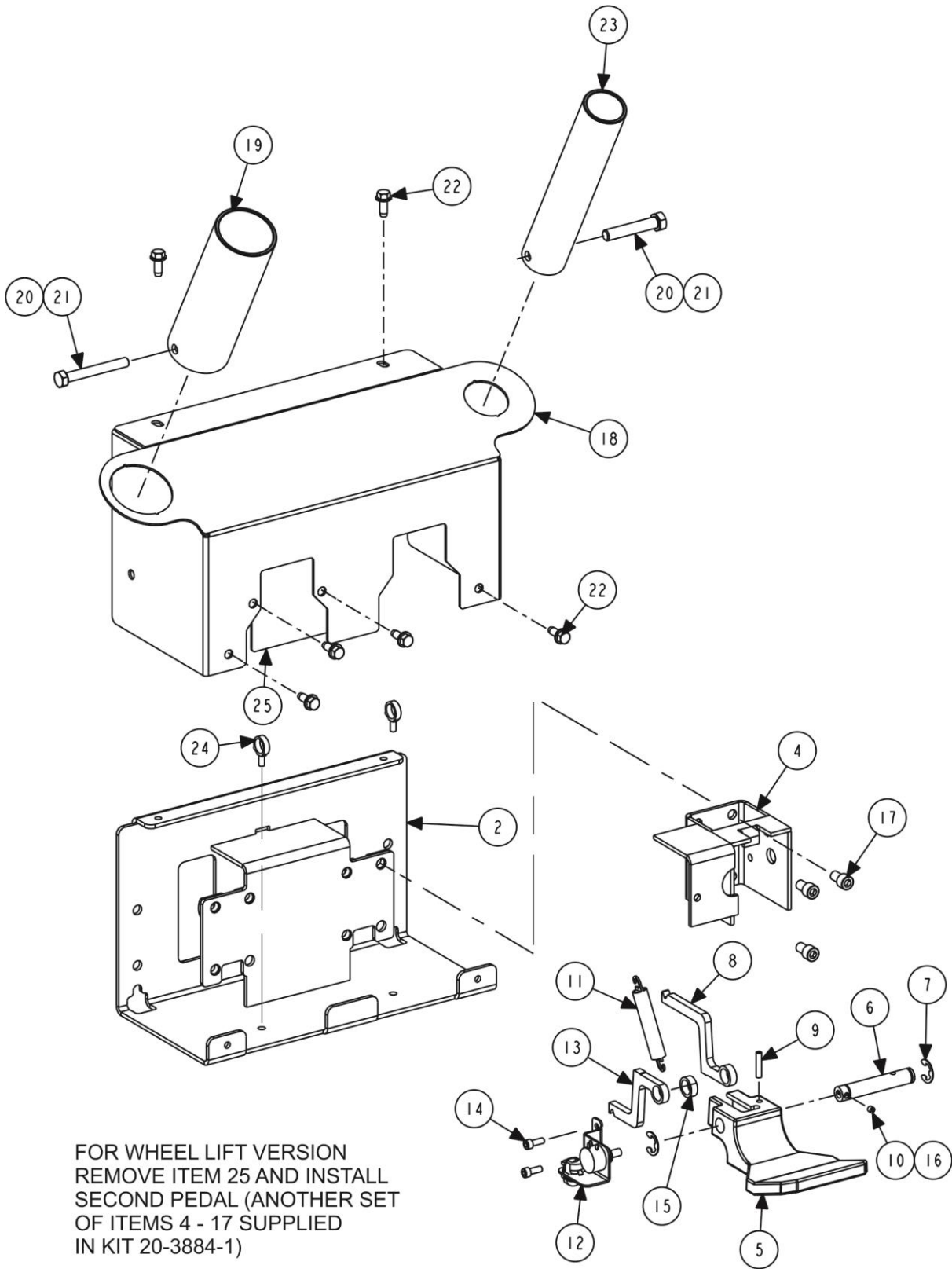
Index No.	Part Number	Description	Qty.
1	30-595-1	CONSOLE ASM – TCM (Consists Of:)	1
2	30-597-1-PPP	CONSOLE TOP - TCM	1
3	30-598-1-PPP	CONSOLE BODY - TCM	1
4	73-1231-PPP	PANEL - FRONT - TCM CONSOLE	1
5	160-83-PPP	HINGE - TCM CONSOLE	1
6	76-415-2	NUT-HEX INSERT 10-32	9
7	75-312-2	THMS 10-32X1/2 PR BZ	4
8	48-116-2	POP RIVET - 3/16 X .125 - BZ	9
9	76-414-2	NUT-HEX INSERT 1/4-20	3
10	76-615-2	NUT - CLIP ON - 6-32	6
11	141-93	EXTRUSION- DIN RAIL- 2"	1
12	75-126-2	THMS 1/4-20X.38 ZP	2
13	76-395-2	NUT-ACORN 1/4-20 LOW CROWN BO	2
14	162-112-2	TAPE-3M DOUBLE COATED FOAM	4
15	149-392-1	BEZEL ASM - TC CONSOLE (Consists Of:)	1
16	149-391-2	BEZEL - FRONT - TC CONSOLE	1
17	18-639-2	SWITCH-OVERLAY TCM	1
18	124-193-2	SEAL - JOYSTICK BELLOWS	4
19	45-1817-1	PCA-MTC CONTROL	1
20	77-438-2	WASHER- NYLON- .156 ID .438OD	7
21	75-437-2	PHSMS 6X.25 PR TRILOBULAR ZP	12
22	69-1778-2	COVER- USB TYPE A CONNECTOR	1
23	45-1873-1	PCA-TCM-WITH BONDED JOYSTICKS	1
24	145-536-3*	MANIFOLD ASM-PNEU TC2 (Consists Of:)	1
25	145-527-2	MANIFOLD- PNEUMATIC- TC2	1
26	18-600-2	SWITCH-PRESSURE 65 PSI	1
27	162-108-2	LOCTITE #545 THREAD SEALANT	AR
28	145-281-2	FITTING-1/4 HOSE X 1/8 NPT	1
29	145-416-2	FITTING, 1/8 NPT TO 5/32 PTC	1
30	145-289-2	FITTING-1/8 NPT EXHST SILENCER	2
31	108-223-2	VALVE- 3 PORT N.C.	1
32	108-225-2	VALVE- 3 PORT N.C.	1
33	108-197-2	VALVE-5 PORT2	2
34	108-305-2	VALVE- BLANK OFF PLATE	1
or	108-299-2	VALVE- 5 PORT- CLOSED CENTER (Not Illustrated)	1
AND	49-105-1	GASKET KIT - SINGLE SMC VQZ VALVE (gasket and screws)	1
AND	145-357-2	FITTING-1/4 PLUG-IN ELBOW	2
35	145-183-2	FITTING-1/4IN NPT ELBOW SWIVEL	1
36	145-184-2	FITTING-1/4 NPT -M TO 5/16 PTC	1
37	49-104-2	GASKET KIT-SMC VQZ1000 VALVES	0.3

\*TABLE 4: PNEUMATIC MANIFOLD VALVES AND WIRING 37-803-1

FUNCTION	VALVE	CABLE TIES	NOTES
UPPER BEAD ROLLER INDENT	108-197-2	PURPLE, BLUE	UPPER 108-197-2 VALVE ON MANIFOLD
LOWER BEAD ROLLER INDENT	108-197-2	RED, GREEN	LOWER 108-197-2 VALVE ON MANIFOLD
INFLATE	108-225-2	BLACK	
DEFLATE	108-223-2	WHITE	

TABLE 4: PNEUMATIC WHEEL LIFT VALVE / WIRING 37-802-1

FUNCTION	VALVE	CABLE TIES	NOTES
WHEEL LIFT	108-299-2	ORG AND YEL	CONNECT ORANGE TO LEFT AND YELLOW TO RIGHT VALVE



FOR WHEEL LIFT VERSION  
 REMOVE ITEM 25 AND INSTALL  
 SECOND PEDAL (ANOTHER SET  
 OF ITEMS 4 - 17 SUPPLIED  
 IN KIT 20-3884-1)

## PEDALS

REFER TO NEXT SHEET FOR PARTS DESCRIPTION LISTING

Index No.	Part Number	Description	Qty.
1	164-141-1	LEVER ASM-SINGLE PEDAL TCM (Consisting Of:)	1
2	67-784-1-005*	BOX-PEDAL TCM WELDMENT	1
3	164-135-1	LEVER ASM-FOOT PEDAL (Consisting Of:)	1
4	14-1490-1-005	BRACKET - TC SINGLE FOOTPEDAL	1
5	164-98-2	LEVER-FOOT PEDAL	1
6	159-23-2	AXLE-SINGLE FOOTPEDAL TC	1
7	112-15-2	SNAP RING-5133-50 OR EQUAL	2
8	22-523	ANGLE-SPRING ARM UPPER TC	1
9	135-61-2	3/16X7/8 SPLIT PIN	1
10	75-76-2	SSS 10-32X.19 FLAT PT BO	1
11	98-472-2	SPRING - FOOTPEDAL EXTENSION	1
12	93-74-1	POT-TC ROTATE PEDAL SENSOR	1
13	22-524	ANGLE-SPRING ARM LOWER TC	1
14	75-394-3	SHCS 10-32X.50 FTHD BO COATED	2
15	113-324-2	BUSHING - TC FOOTPEDAL SPACER	1
16	162-125-2	ADHESIVE-THREAD LOCK STICK	AR
17	74-295-2	SHCS 5/16-18X.50 FTHD ZP	3
18	69-1804-005*	COVER-DUAL PEDAL TCM	1
19	16-1228-005	TUBE-WHEEL CLAMP HOLSTER TCM	1
20	74-34-2	HHCS 5/16-18X2.50 ZP	2
21	76-177-2	NUT-KEPS 5/16-18 ZP	2
22	75-317-2	SCREW-THD RLG 1/4-20X5/8 HWHZP	6
23	16-1234-005	TUBE-ACCESSORY STORAGE TCM	1
24	94-41-2	CLAMP - RELEASABLE, FIN BASE	2
25	69-1807-005	COVER-FOOT PEDAL OPENING	1
26	74-563-2	HHCS 5/16-18X.75 FLANGED (Secures to TC Body / Not Illus.)	4
27	76-501-2	NUT-HEX INSERT 5/16-18 (Secures to TC Body / Not Illus.)	4

\* Cover and box weldment got a little taller on newer version. See below part numbers if older version of pedals is present.

\* Decal 128-1470-2 (TC ROTATE PEDAL) is on cover. Decal 128-1938-2 (WL PEDAL) is added to cover when appropriate.

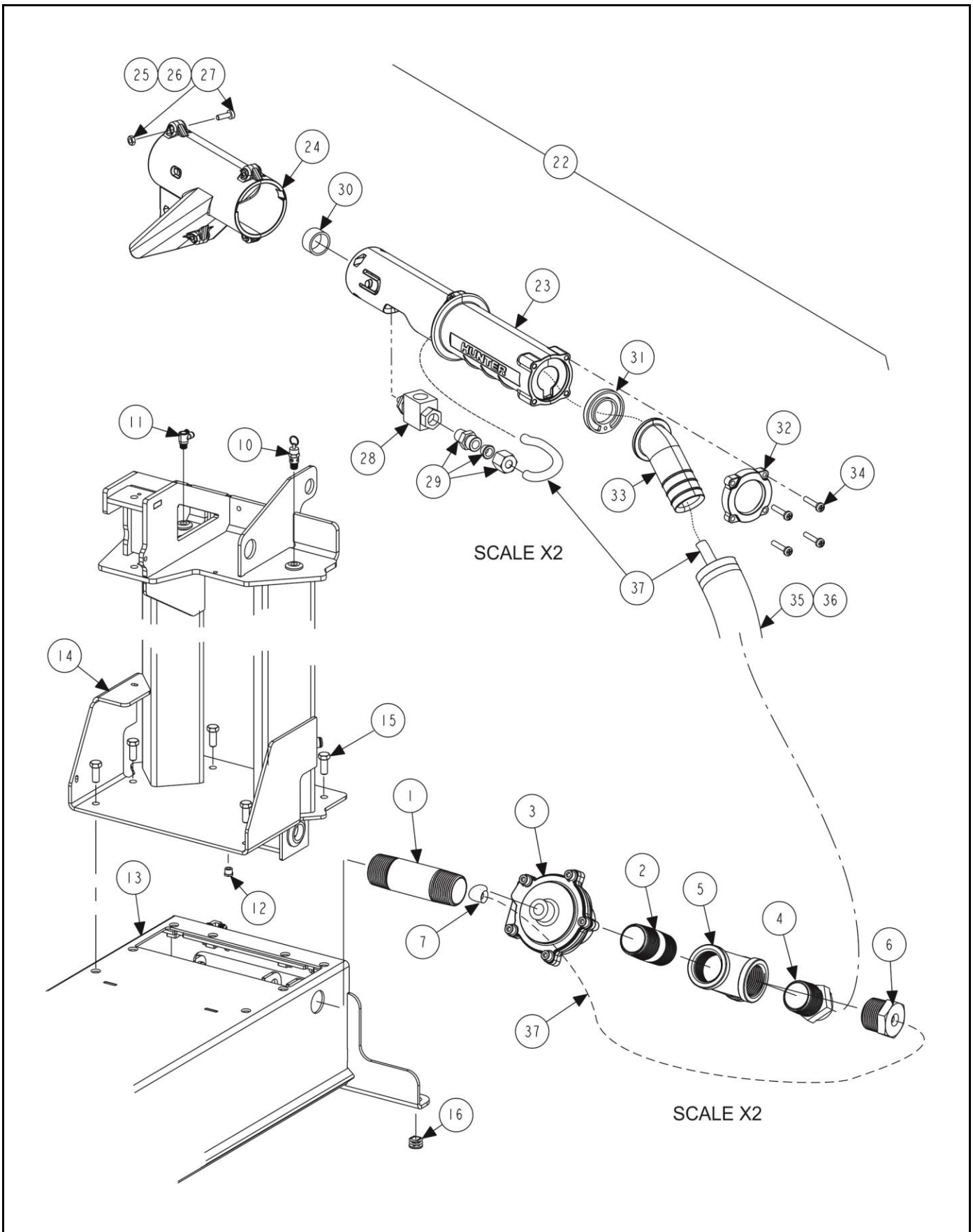
List of unique items for original pedal version – items similar to items shown above but not exact.

Difference of these older-version parts:

1- a standard cover with one pedal hole and WL cover with two holes was then supplied

2- covers and box weldment are a little shorter than new version

Index No.	Part Number	Description	Qty.
1	164-136-1	LEVER ASM-SINGLE PEDAL TC2 (Consisting Of:)	1
2	67-775-1-005	BOX-PEDAL TCM WELDMENT	1
18	69-1774-005	COVER-SINGLE PEDAL TCM	1
OR	69-1782-1	COVER – TCM ROTATE AND WL (Supplied in wheel lift kit 20--3884-1)	1



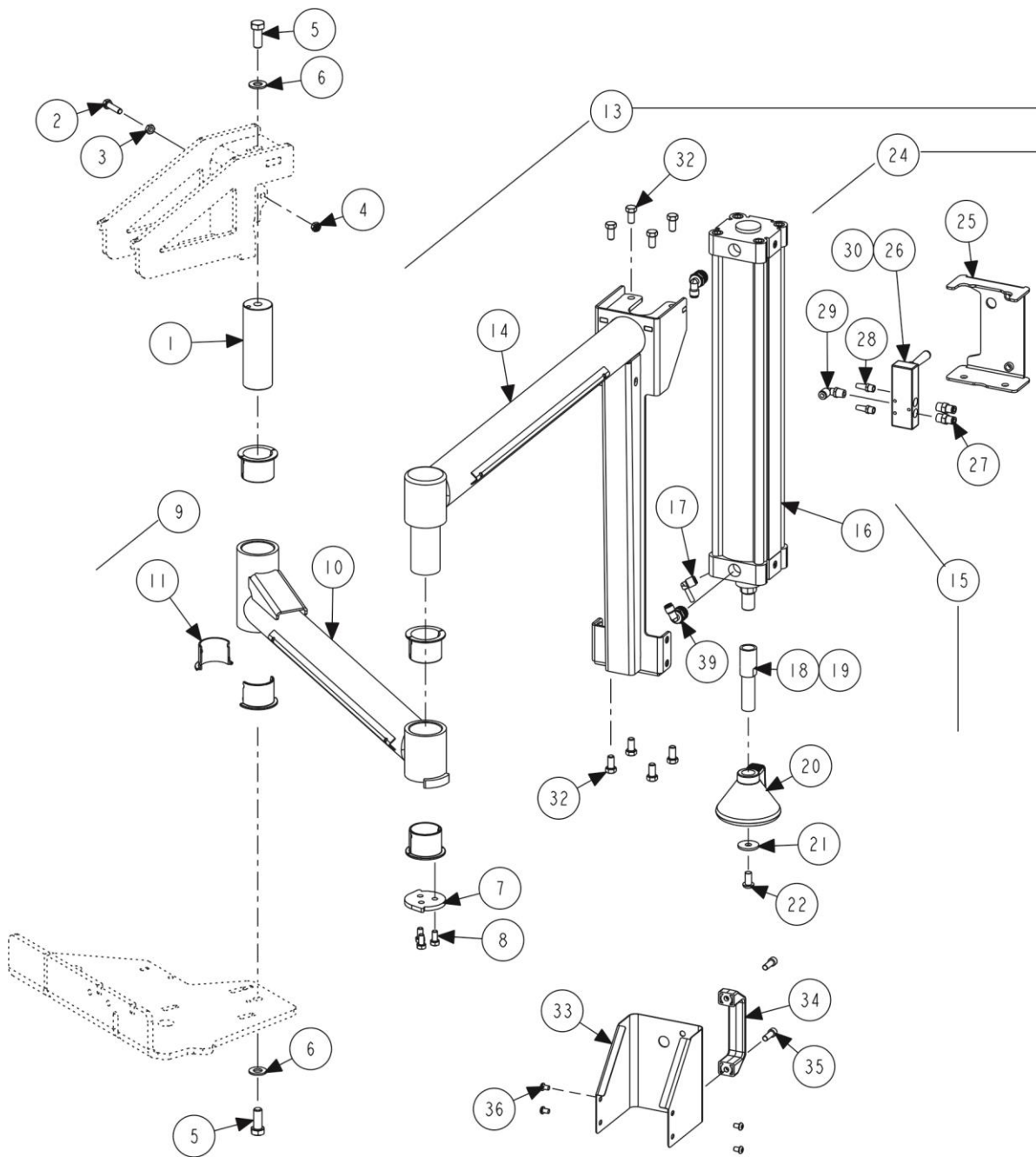
## BLAST INFLATION

REFER TO NEXT SHEET FOR PARTS DESCRIPTION LISTING

Index No.	Part Number	Description	Qty.
1	145-545-2**	PIPE NIPPLE - 1 INCH NPT X 3 1/2 INCH	1
2	145-438-2	PIPE NIPPLE - 1 INCH NPT X 2.5 INCH	1
3	108-308-1**	VALVE - DUMP	1
4	145-440-2	FITTING - HOSE END - 1 INCH	1
5	145-496-2	FITTING, 1" NPT FEMALE TEE	1
6	113-348-2	BUSHING-TUBE SEAT	1
7	145-324-2**	FITTING-1/8NPT TO 1/4 TUBE 90	2
8	162-223-2	SEALANT-PIPE THREAD W/PTFE	A/R
9	N/A	N/A	-
10	108-229-2	VALVE- PRES RELEASE- 150 PSI (on top)	1
11	145-537-2	FITTING-1/4NPT X 1/4PTC BRANCH (on top)	1
12	43-96-2	PLUG-1/4 NPT HEX HEAD (hidden on bottom)	1
13	72-703-1-PPP	BASE-TCM WELDMENT	1
14	149-388-1-PPP	FRAME- TCM TOWER	1
15	74-11-2	HHCS 1/2-13X1.25 GR5 FT HD ZP	8
16	43-189-2	PLUG-.875 X1 TUBE CAP	4
17-21	N/A	N/A	-
22	106-184-1	NOZZLE - TIRE CHANGER BLASTER (Consisting Of:)	1
23	142-179-3	HANDLE - BEAD SEAT (Includes:)	1
24	106-181-3*	NOZZLE - BEAD SEAT (Includes:)	1
25	75-805-2	PAN HEAD MACHINE SCREW - 6 - 32 X 7/16 - INCH	4 / 5
26	76-511-2	NUT - UNDERSIZED HEX - 6 - 32	4 / 5
27	Field Purchase	LOCTITE 242	A/R
28	108-75-2	VALVE - 2 WAY POPPET	1
29	145-502-2	FITTING - COMPRESSION 1/8 INCH NPT X 1/4 INCH TUBE	1
30	98-470-2	SPRING - COMPRESSION	1
31	46-685-2	SPACER - BEAD SEAT	1
32	53-182-2	CAP - END - BEAD SEAT	1
33	145-443-3	FITTING - HOSE - BEAD SEAT	1
34	75-784-2	PAN HEAD SHEET METAL SCREW 6 X 3/4 INCH BLACK	4
35	137-120-2	HOSE - 1 INCH ID - 200 PSI	7.25 FT
36	12-223-2	CLAMP - HOSE - 1.45 INCH ID	2
37	16-423-2	TUBING - AIR .172 INCH INNER DIAMETER	10 FT

\* Decal 128-1149-2 (WARNING TC AIR BLAST) is on this part.

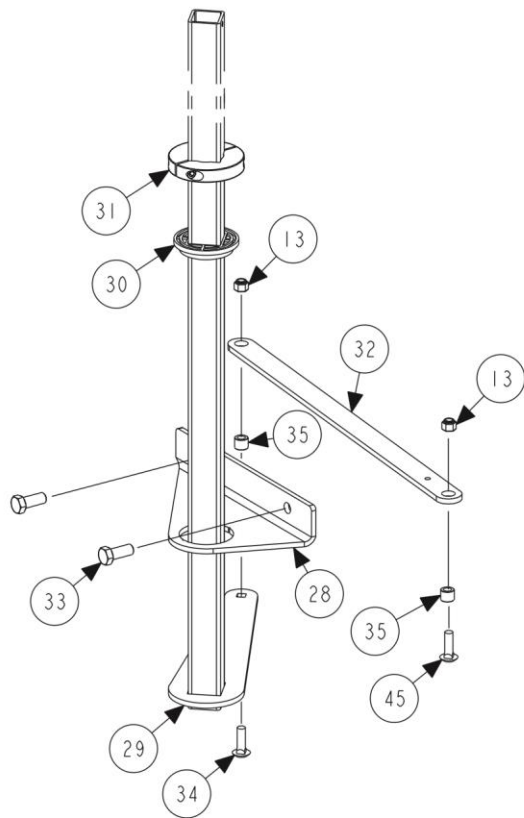
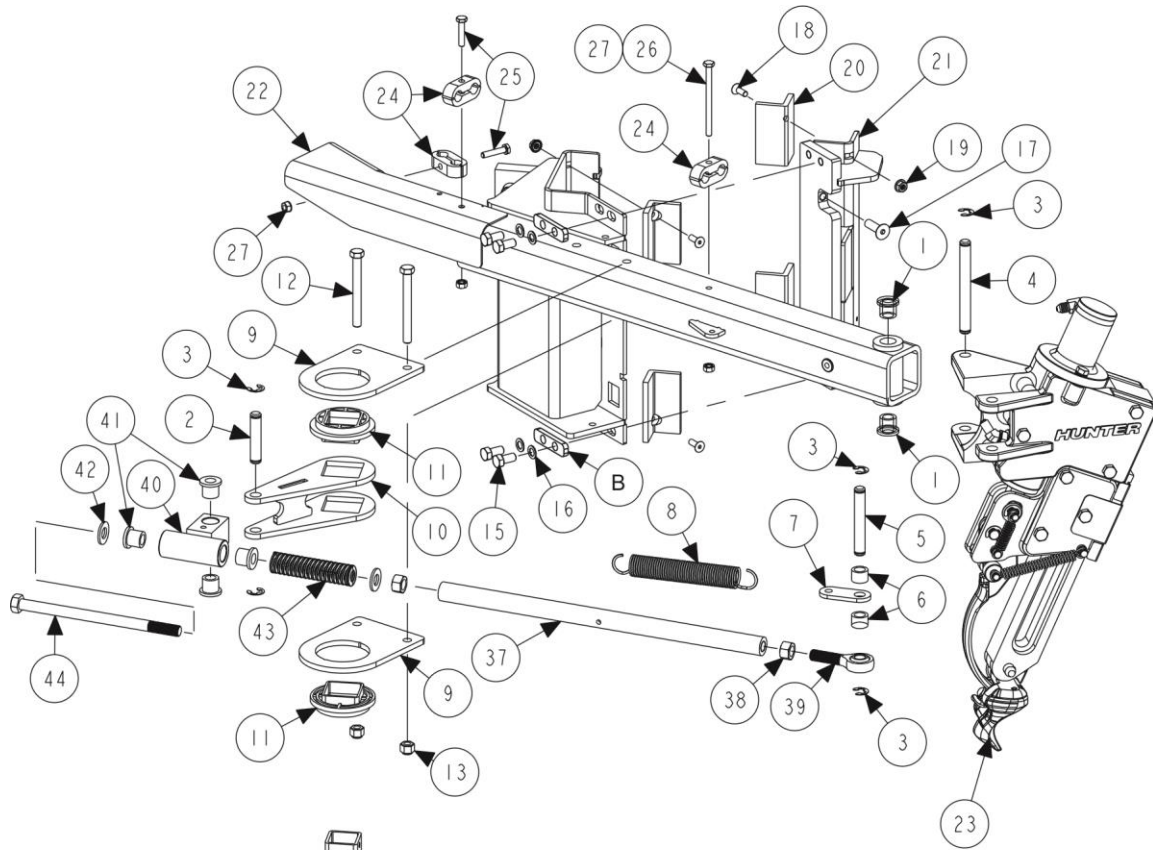
\*\* Field service kit 20-4080-1 will include everything needed (145-545-2 and 145-324-2) to replace original 108-246-1 with a new 108-308-2 dump valve. Previous plumbing for pervious dump valve (108-246-1) was PIPE NIPPLE - 1 INCH NPT X 4 INCH (145-532-2) and FITTING - 1/4 INCH TUBE - 1/4 NPT 90 ELBOW (145-350-2).



# BEAD PRESS

REFER TO NEXT SHEET FOR PARTS DESCRIPTION LISTING

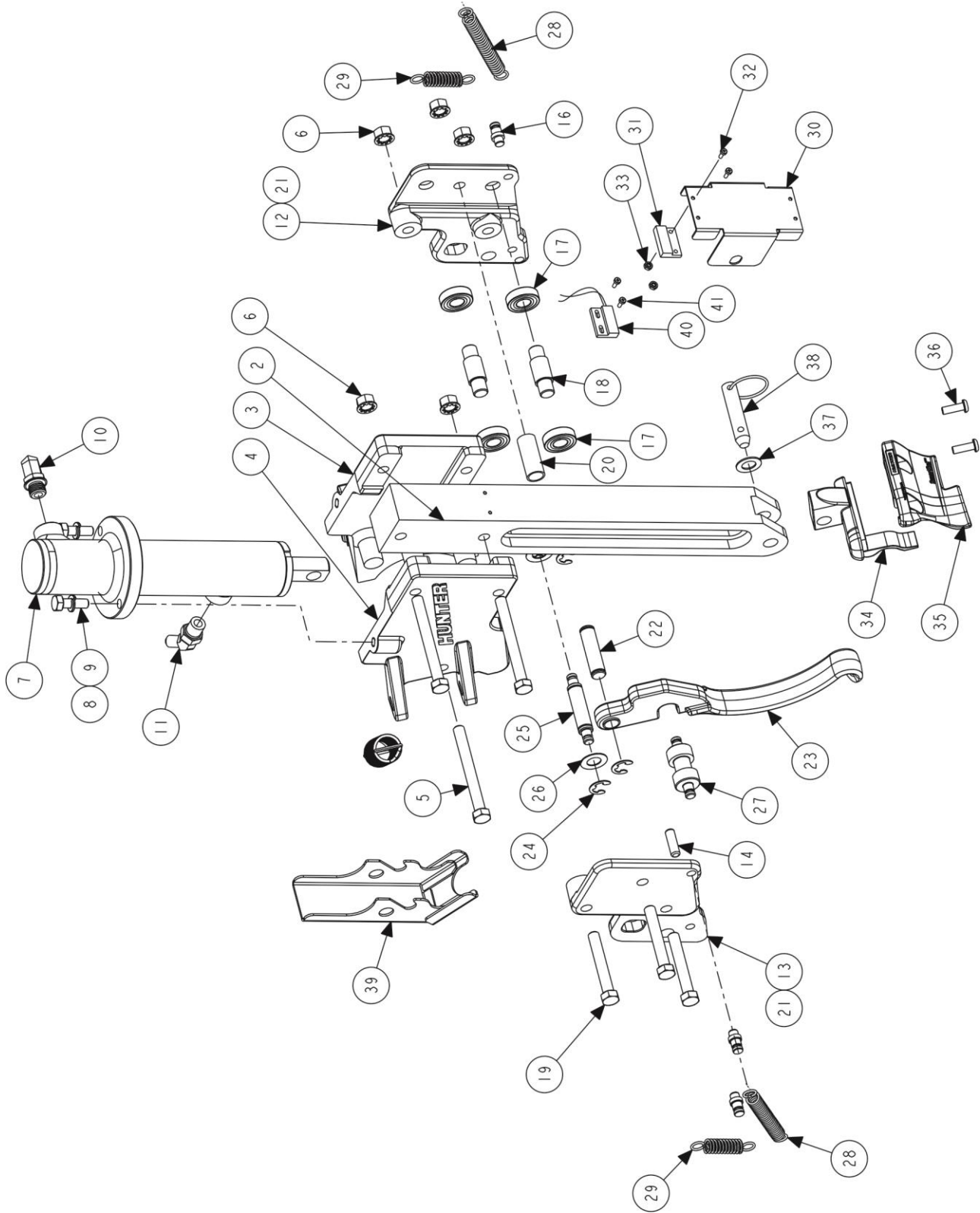
Index No.	Part Number	Description	Qty.
1	159-31-2	AXLE - PUSHER ARM INNER LONG	1
2	74-448-2	HHCS 5/16-18X1.25 FTHD ZP	1
3	76-176-2	NUT-JAM 5/16-18 ZP	1
4	76-498-2	NUT-5/16-18 NYLON-INSERT	1
5	74-679-2	HHCS 1/2-20 X 1.25 GR8 FTHD ZP	2
6	77-23-2	WASHER-FLAT 1/2 TPA-N ZP	2
7	51-3314-005	PLATE - PUSHER ARM RETAINER	1
8	74-352-2	HHCS 5/16-18X.63 GR8 FTHD ZP	3
9	103-328-1	ARM - PUSHER INNER ASM (Consisting Of:)	1
10	103-326-1-005	ARM - PUSHER INNER WLDMNT	1
11	130-278-2	BEARING - PUSHER ARM SPLIT	8
12	Field Purchase	LUBRICANT-CAM	AR
13	103-329-1	ARM - PUSHER OUTER ASM(Consisting Of:)	1
14	103-327-1-005	ARM - PUSHER OUTER WLDMNT	1
15	140-141-1	CYLINDER ASM - PUSHER ARM(Consisting Of:)	1
16	140-138-2	CYL - PNEUMATIC 3.25" X 18"	1
17	145-521-2	FITTING-1/2NPT-1/4 TUBE ELBOW	2
18	63-317-2	ROD - PRESS FOOT ADAPTER	1
19	Field Purchase	ADHESIVE- MEDIUM THREAD LOCKER	AR
20	62-126-2	FOOT - PUSHER W HOOK	1
21	77-145-2	WASHER-FLAT 3/8 SPECIAL ZP	1
22	74-327-3	SBHCS 3/8-16X.75 FTHD, COATED	1
23	145-357-2	FITTING-1/4 PLUG-IN ELBOW	1
24	14-1872-1	BRACKET - PUSHER HANDLE ASM (Consisting Of:)	1
25	14-1871-1	BRKT-PUSHER MANDLE MNT ASM	1
26	108-297-2	VALVE - 5/3 TOGGLE NC	1
27	145-273-2	FITTING- 1/4 HOSE X 1/4 NPT	2
28	145-289-2	FITTING-1/8 NPT EXHST SILENCER	2
29	145-350-2	FITTING-1/4 TUBE-1/4 NPT 90 EL	1
30	Field Purchase	TAPE-3M DOUBLE COATED FOAM	1
31	Field Purchase	LOCTITE #545 THREAD SEALANT	A/R
32	74-164-2	HHCS 3/8-24X.75 GR5 FTHD	8
33	69-1737-005	COVER - PUSHER ARM HANDLE	1
34	142-247-2	HANDLE - PLASTIC PULL	1
35	74-376-2	SHCS-5/16-18X7/8 BO	2
36	75-765-2	SBHCS 1/4-20 X 3/8" BO	4
37	16-864-2	TUBING-AIR .17 ID .25 OD POLYU	35 in
38	16-843-2	TUBE-1/4 HOSE, FLEXIBLE	100 in
39	145-521-2	FITTING-1/2NPT-1/4 TUBE ELBOW	2



**MOUNT HEAD ARM AND LINKAGE**  
**REFER TO NEXT SHEET FOR PARTS DESCRIPTION LISTING**

Index No.	Part Number	Description	Qty.
1	130-277-2	BEARING-1/2" FLANGED BRONZE	2
2	135-684-2	PIN-LINKAGE CONNECTION	1
3	112-15-2	SNAP RING-#5133-50 OR EQUAL	6
4	135-682-2	PIN-MOUNT HEAD PIVOT	1
5	135-683-2	PIN-LINKAGE PIVOT	1
6	46-838-2	SPACER-SPRING POSITIONER	2
7	41-271-005	RETAINER - WHEEL LIFT PIVOT	1
8	98-578-2	SPRING-ARM TENSIONER	1
9	51-3326-005	PLATE- BEARING HOLDER TCM	2
10	103-325-1-005	ARM-TCM PIVOT SLIDING	1
11	113-385-2	BUSHING-1.5 SQUARE TUBE	2
12	74-383-2	HHCS 3/8-16X3.50 GRADE 5	2
13	76-275-2	NUT-LOCK 3/8-16 NYL INSERT ZP	4
14	106-199-2	SLEEVE-.625X.380X.500	2
15	74-677-3**	HHCS 3/8-16X1.125 INCH GR8	4
B	51-3455-2**	PLATE-BOLT REINFORCEMENT	2
16	77-297-2	WASHER-FLAT 3/8 ZP	4
17	74-461-2	BOLT - FHSCS 3/8-16 X 1.25 ZP	2
18	75-68-3	FHSCS1/4-20X.75 ZP COATED	4
19	76-17-2	GRIP NUT 1/4-20 ZP	4
20	130-279-2	UHMW SLIDE BEARING	4
21	56-104-1-005	CARRIER- TCM VERTICAL SLIDE	1
22	103-321-1-005	ARM- TCM TOOLHEAD WELDMENT	1
23	103-317-1	ARM-MOUNT HEAD/HOOK ASM (See next Sheet)	1
24	12-227-2	CLAMP-TUBE 1/2" DOUBLE	3
25	75-728-2	HHCS-1/4-20X1.25 GR5	2
26	75-918-2	HHCS 1/4-20X3.5 GR8	1
27	76-85-2	NUT-KEPS 1/4-20 ZP	3
28	11-1915-PPP	SUPPORT-PIVOT SHAFT TCM	1
29	120-138-1-PPP	LINK-TCM PIVOT SHAFT	1
30	113-386-2	BUSHING-1.5 SQUARE TUBE SHORT	1
31	217-94-2	COLLAR-SQUARE SHAFT 1-1/2 BO	1
32	120-143-005	LINK-PIVOT SHAFT TCM	1
33	74-11-2	HHCS 1/2-13X1.25 GR5 FTHD ZP	2
34	74-253-2	BOLT-CARRIAGE 3/8-16X1 1/4 ZP	1
35	77-66-2	WASHER-FLAT 3/8 TPA-W ZP	2
36	103-318-1	ARM- ANGLE POSITIONING LINKAGE (Consisting Of:)	1
37	16-1220-2	TUBE-LINKAGE SHAFT	1
38	76-31-2	NUT-HEX 1/2-20 ZP	2
39	130-276-2	BEARING-1/2" BALL JNT ROD END	1
40	14-1866-1-005	BRACKET-LINKAGE SLIDE	1
41	130-277-2	BEARING-1/2" FLANGED BRONZE	4
42	77-23-2	WASHER-FLAT 1/2 TPA-N ZP	2
43	98-577-2	SPRING-DIE LINKAGE DAMPER	1
44	74-673-2	HHCS 1/2-20X8.00 GR 8 ZP	1
45	74-597-2	SBHCS - 3/8-16X1.38 INCH FULL-THREAD	1

\*\* Included in Kit 20-4103-1. Kit contains mid 2024 Maverick improvements. See bulletin sv24-066 or CN08230-00



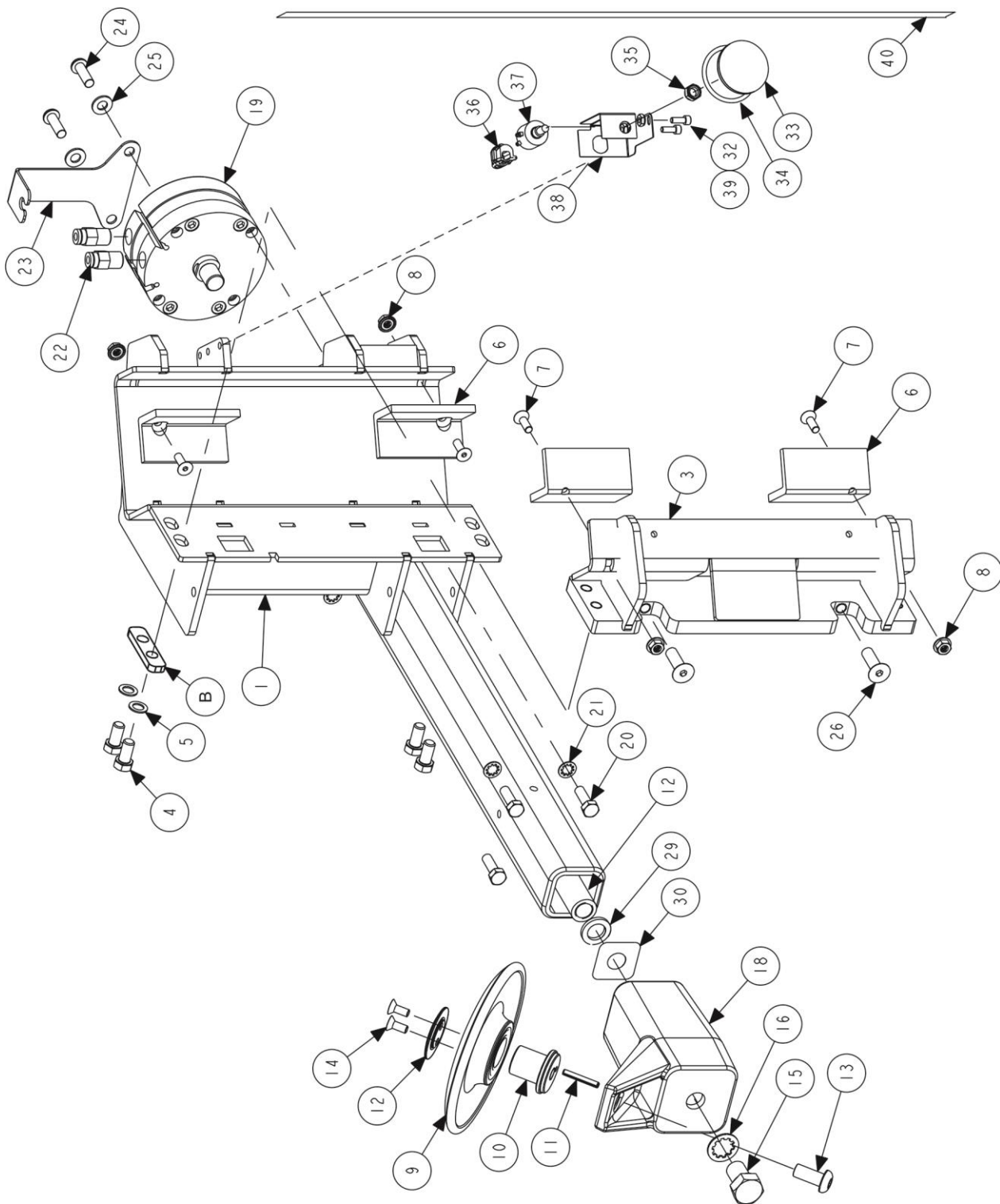
# MOUNT HEAD ASSEMBLY

REFER TO NEXT SHEET FOR PARTS DESCRIPTION LISTING

Index No.	Part Number	Description	Qty.
1	103-317-1	ARM-MOUNT HEAD/HOOK ASM (Consists Of:)	1
2	57-1002-2	BAR-CARRIAGE SLIDE	1
3	14-1860-2	BRACKET-MOUNTHEAD PIVOT LEFT	1
4	14-1861-2*	BRACKET-MOUNTHEAD PIVOT RIGHT	1
5	74-383-2	HHCS 3/8-16X3.50 GR5 ZP	3
6	76-159-2	NUT-KEPS 3/8-16 ZP	6
7	140-137-2	CYLINDER-HOOK EXT/RETRACT	1
8	74-521-2	HHCS 5/16-18 X 1.00 G5 ZP	2
9	77-60-2	WASHR-LOCK 5/16 HELICAL SPG ZP	2
10	145-473-2	FITTING-4-6 SAE 37 DEG ELBOW	1
11	145-534-2	FITTING-4-6 SAE 37 45 DEG ELBW	1
12	51-3304-2	PLATE-CARRIAGE LEFT	1
13	51-3305-2	PLATE-CARRIAGE RIGHT	1
14	135-539-2	PIN-DOWEL 5/16X1.00	1
16	135-679-2	PIN-SPRING LOAD STAKE	4
17	130-172-2	BEARING-SEALED BALL	4
18	135-697-2	PIN-BEARING SUPPORT W/SPACER	2
19	74-375-2	HHCS 3/8-16X2.50 GR5 ZP	3
20	46-852-2	SPACER-CASTING SEPARATOR	1
21	148-148-2	GREASE-CITGO LITHOPLEX CM2	A/R
22	135-709-2	PIN-HOOK SUPPORT	1
23	221-723-3	HOOK-DEMOUNT TOOL ASM	1
24	112-15-2	SNAP RING-#5133-50 OR EQUAL	4
25	135-678-2	PIN-CYLINDER SPRING MOUNT	1
26	77-341-2	WASHER-THRUST BEARING 1/2 ID	2
27	135-677-2	PIN-HOOK SPRING LOAD	1
28	98-575-2	SPRING-HOOK ROTATION	2
29	98-576-2	SPRING-CARRIAGE POSITION	2
30*	14-1865-005	BRACKET-LIMIT SWITCH MAGNET	1
31	60-24-2	MAGNET-REED SWITCH ACTUATOR	1
32	75-860-2	PHMS 4-40X5/16 PR BZ	2
33	76-59-2	NUT-KEPS 4-40	2
34	221-718-2	TOOL-MOUNT INSERT	1
35	221-810-2	TOOL-MOUNT/DEMOUNT	1
36	75-849-2**	SBHCS-1/4-20 X 3/4 INCH LONG ZP	2
37	77-294-2	WASHER - FLAT 1/2 ID X 7/8 OD	1
38	135-548-2	PIN-CLEVIS BALL DET 1/2 X1.5UL	1
39	69-1816-1-005	COVER-TCM CARRIAGE ASSM	1
40	38-1394-1	CABLE ASM-MTC TOOL HOOK SWITCH	1
41	75-860-2	PHMS 4-40X5/16 PR BZ	2

\* Composite decal 128-1945-3 contains decals that are on these components. See sheet 3 for image of composite.

\*\* Now mount head securing hardware is zinc plated



LOWER BEAD ROLLER SHOWN

## UPPER AND LOWER BEAD ROLLERS

REFER TO NEXT SHEET FOR PARTS DESCRIPTION LISTING

Index No.	Part Number	Description	Low Qty.	Top Qty.
1	103-320-1-005*	ARM- TCM LBB WELDMENT	1	-
2	103-319-1-005*	ARM-TCM UBB WELDMENT (Not Shown)	-	1
3	56-104-1-005	CARRIER- TCM VERTICAL SLIDE	1	1
4	74-677-3**	HHCS 3/8-16X1.125 INCH GRADE 8	4	4
5	77-297-2	WASHER-FLAT 3/8 ZP	4	4
6	130-279-2	UHMW SLIDE BEARING	4	4
7	75-68-3	FHSCS1/4-20X.75 ZP COATED	4	4
8	76-17-2	GRIP NUT 1/4-20 ZP	4	4
9	111-154-3	ASSY- BEAD ROLLER	1	1
10	97-688-2	SHAFT-BEAD ROLLER AXLE	1	1
11	135-141-2	PIN-ROLL 3/16X1 1/4	1	1
12	41-207-2	RETAINER-BB-ROLLER	1	1
13	74-632-3	SBHCS 7/16-14X1.00 ZP COATED	1	1
14	75-385-3	FHSCS 1/4-20X.63ZPD COATED	2	2
15	74-675-2	HHCS 5/8-18X1.00 GR5 ZP	1	1
16	77-48-2	WASHER-LOCK 5/8 INT TOOTH	1	1
17	97-731-2	SHAFT - INDENT - BEAD BREAKER	1	1
18	11-1911-2*	MOUNT - BEAD ROLLER	1	1
19	140-140-2	CYL - PNEUMATIC 3" X 7/8"	1	1
20	74-39-2	HHCS 5/16-18X1.00 ZP	4	4
21	77-32-2	WASHER-LOCK 5/16 INT TOOTH	4	4
22	145-376-2	FITTING-1/4NPT-5/32 TUBE	2	2
23	14-1887-005	BRKT- BEAD BREAK STRAIN RELIEF	1	1
24	74-270-2	SBHCS 5/16-18X1.00 FTHD	2	2
25	77-20-2	WASHER-FLAT 5/16 TPA-N ZP	2	2
26	74-461-2	BOLT - FHSCS 3/8-16 X 1.25 ZP	2	2
27	162-204-2	ADHESIVE- LOCTITE 243	A/R	A/R
28	148-125-2	LUBRICANT-EP-2 GREASE BULK	A/R	A/R
29	169-174-2	SHIM - 5/8" ID X 1" OD X 1/8"	1	0
30	169-176	SHIM- BEAD ROLLER- .060	A/R	A/R
31	15-69-2	TUBE - 3/8" WRAP AROUND LOOM (Not Illus)	30 IN	30 IN
A	16-450-2	TUBE-AIR 5/32 OD (Not Illus)	242 IN	290 IN
B	51-3455-2**	PLATE-BOLT REINFORCEMENT	2	2

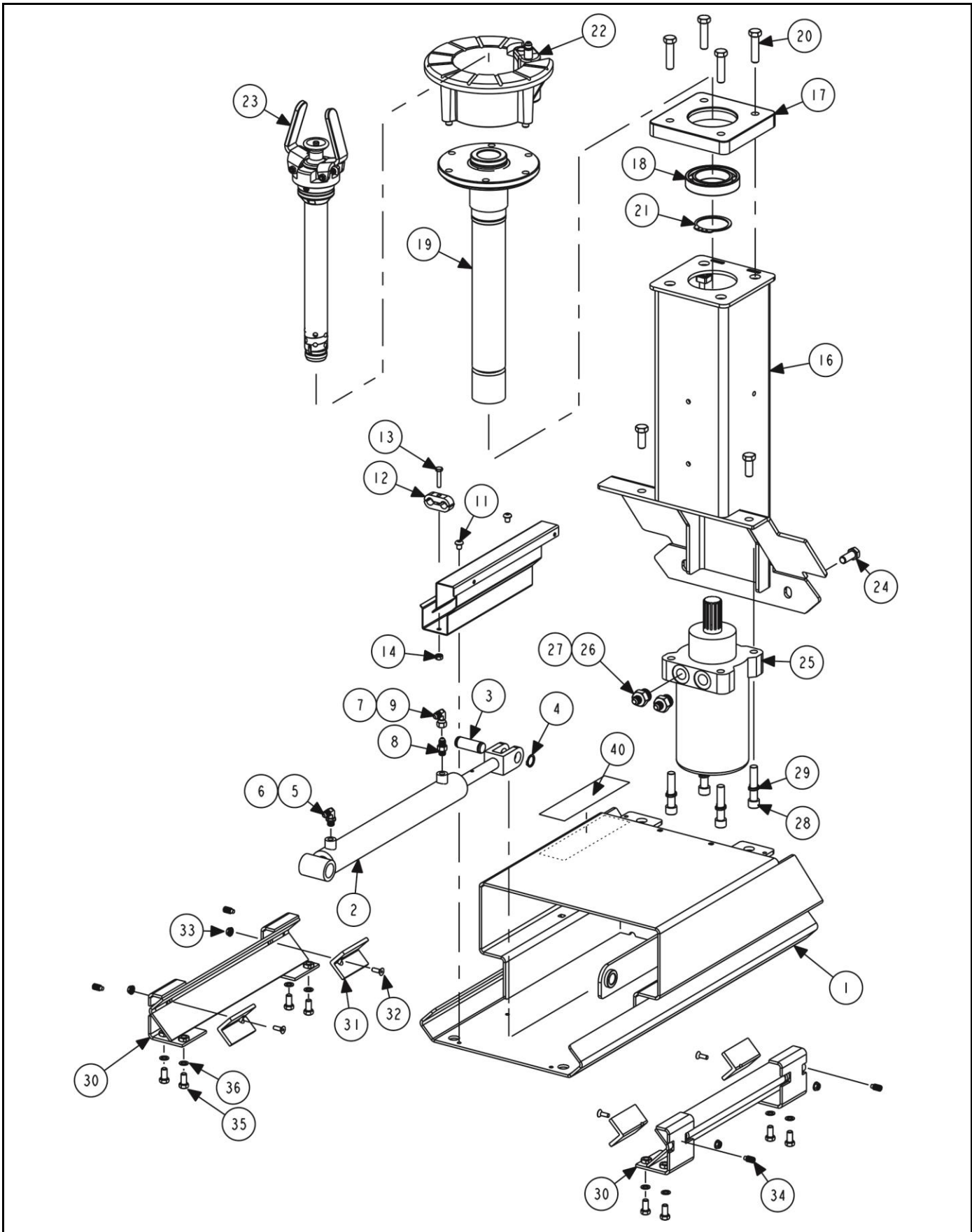
\* Composite decal 128-1945-3 contains decals that are on this part. See sheet 3 for image of composite.

\*\* Included in Kit 20-4103-1. Kit contains mid 2024 Maverick improvements. See bulletin sv24-066 or CN08230-00

**POSITION SENSOR – ONLY ON LOWER BEAD ROLLER**

Index No.	Part Number	Description	Qty.
32	76-61-2	NUT-KEPS 10-32 ZP	2
33	158-132-2	WHEEL- ROTARY POT- BEAD ROLLER	1
34	124-257-2	O-RING- 44.04 MM ID X 3.53 MM	1
35	76-509-2	NUT - CUSTOM POT	1
36	59-69-2	SLEEVE-HEYCO 1816	1
37	38-1402-1	CABLE ASM-MTC LOWER POS SNSR	1
38	14-1882-005	BRACKET- POT MOUNT- BEAD BRKR	1
39	75-394-2	SHCS 10-32X.50 FTHD BO	2
40	Field Purchase	TAPE 0.75 X 30 INCH NON-SKID (applied to column)	ref





## SPINDLE CARRIAGE

REFER TO NEXT SHEET FOR PARTS DESCRIPTION LISTING

Index No.	Part Number	Description	Qty.
1	149-386-1-PPP**	FRAME TCM SLIDING	1
2	140-100-2	CYL-HYD 38MMBR X 20RD X 305STK	1
3	135-505-2	PIN-CLEVIS 3/4 X 1.688	1
4	112-63-2	SNAP RING-TRUARC #5100-75	2
5	145-430-2	FITTING-4-4 SAE 37 DEG ELBOW	1
6	137-129-3	HOSE-1/4" ID HYD 36" LG	1
7	145-320-2	FITTING-7/16 SWIVEL NUT ELBOW	1
8	145-428-2	FITTING-SAE 37 DEG STR.	1
9	137-160-3	HOSE-ASS'Y HYD 1/4 X 50"	1
10	54-1177-005	CHANNEL-TCM HOSE GUIDE LOWER	1
11	74-629-3	SBHCS 5/16-18X.38 FT HD BO TL	2
12	12-227-2	CLAMP-TUBE 1/2" DOUBLE	1
13	75-728-2	HHCS-1/4-20X1.25 GR5	1
14	76-85-2	NUT-KEPS 1/4-20 ZP	1
15	94-55-2	TIE-CABLE 11" BLACK	2
16	149-399-1-PPP*	FRAME TCM SPINDLE	1
17	53-292-2	CAP-TCR2 SPINDLE BEARING	1
18	130-260-2	BEARING-60 X 95 X 18MM	1
19	97-738-3	SHAFT-TCM SPINDLE ASSY	1
20	74-345-2	HHCS 1/2-13X2.00 GR5 ZP	4
21	112-189-2	SNAP RING-EXT 60MM	1
22	184-114-1	HUB ASM-TCR PLATEN (See Following Sheet)	1
23	12-281-1	CLAMP- TC WHEEL LOCK (See Following Sheet)	1
24	74-11-2	HHCS 1/2-13X1.25 GR5 FT HD ZP	4
AND	77-23-2	WASHER FLAT 1/2 INCH	4
25	129-289-2	MOTOR-HYDRAULIC 38 CU IN	1
26	145-447-2	FITTING-STRAIGHT THD CONNECTOR	2
27	137-159-3	HOSE-ASS'Y HYD 1/4 X 63"	2
28	74-500-3	SHCS 1/2-13 X 2.50 ZP	4
29	77-382-2	WASHER-LOCK HI-COLLAR 1/2 BO	4
30	114-108-1-PPP	SLIDE- TCM BASE WELDMENT	2
31	130-279-2	UHMW SLIDE BEARING	4
32	75-68-3	FHSCS1/4-20X.75 ZP COATED	4
33	76-17-2	GRIP NUT 1/4-20 ZP	4
34	75-882-2***	SSS 3/8-16X1.25 INCH CUP PT	4
AND	76-275-2***	NUT-LOCK 3/8-16 NYL INSERT	4
35	74-522-3	HHCS 3/8-16X.75 GR5 FT HD TL	8
36	77-297-2	WASHER-FLAT 3/8 ZP	8
37	192-226-1	CONE, TC WHEEL CLAMP (Accessory) (Includes:)	1
38	41-208-2	RETAINER - ROUND WIRE 2.5 INCH DIAMETER	1
39	192-233-1	CONE - MEDIUM CLAMPING (Accessory) (Not Illus.)	1
39	69-1748-PPP	COVER-TC2 WHEEL LIFT HOSE PORT (Not Illus./See Sheet 16)	1
40	128-2098-2	DECAL-TCM TIRE DIAMETER	1

\* Decal 128-1964-2 (TCM HUNTER) is on this part.

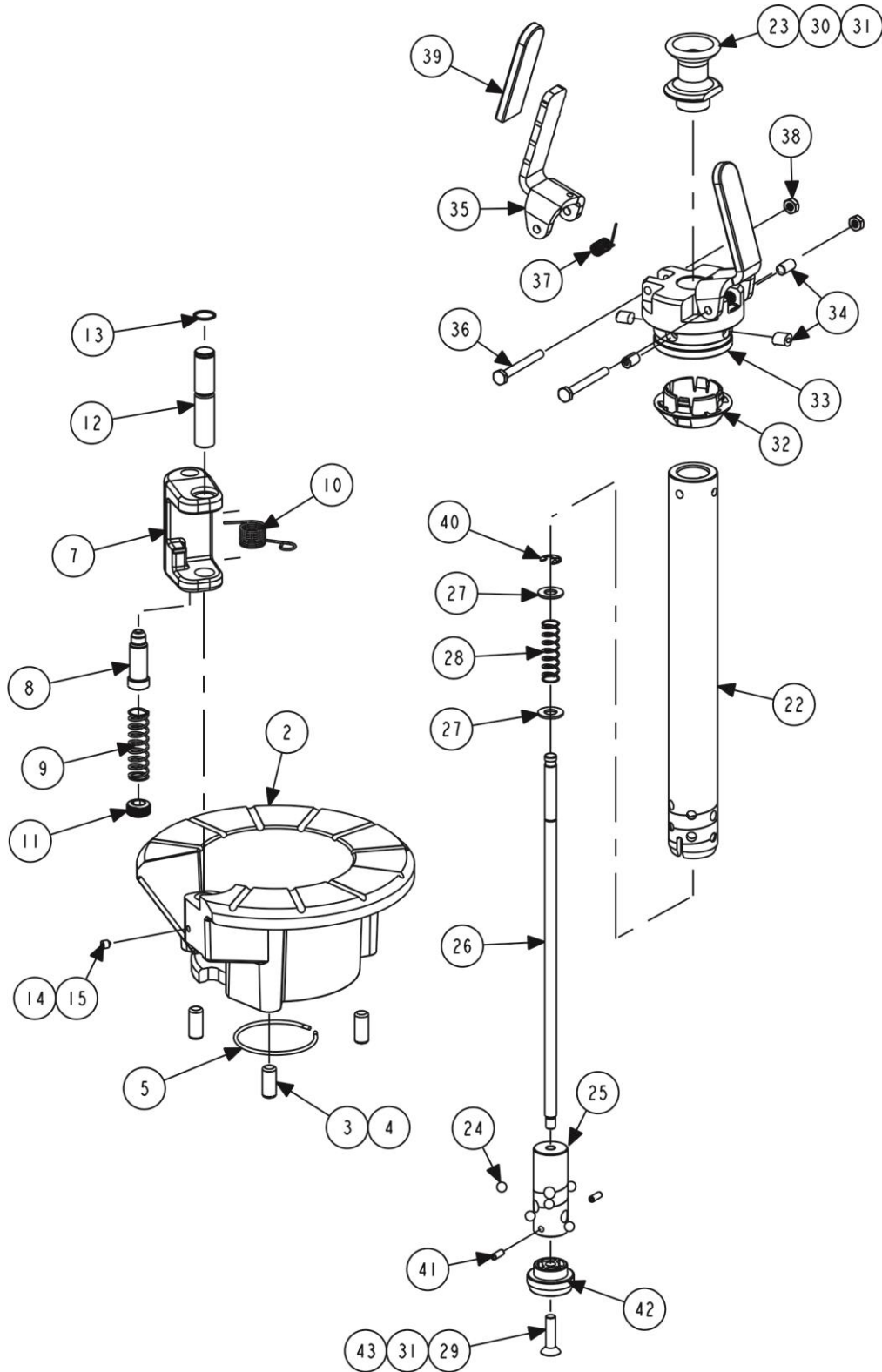
\*\* Composite decal 128-1945-3 contains decals that are on this part. See sheet 3 for image of composite.

\*\*\* Included in Kit 20-4103-1. Kit contains mid 2024 Maverick improvements. See bulletin sv24-066 or CN08230-00



11250 HUNTER DRIVE BRIDGETON, MO 63044

PPP-Paint Code Required  
A/R-As Required  
REF-Reference



## CLAMPING

REFER TO NEXT SHEET FOR PARTS DESCRIPTION LISTING

Index No.	Part Number	Description	Qty.
1	184-114-1	HUB ASM-TCR PLATEN (Consists Of:)	1
2	105-759-3	HOUSING ASM-TCR PLATEN (Contains:)	1
3	135-499-2	PIN-DOWEL 7/16DIA X 1LG	3
4	162-57-2	ADHESIVE-RETAINING COMPOUND	AR
5	41-208-2	RETAINER-ROUND WIRE 2.5 DIA	1
6	135-658-1	PIN ASM-TCR ANTI ROTATE (Consists Of:)	1
7	68-107-2	BODY-TCR ANTI ROTATE	1
8	135-659-2	PIN-TCR ANTI-ROTATE	1
9	98-473-2	SPRING-COMP .65 OD X 2.5 X .06	1
10	98-468-2	SPRING-TORSION AR PIN	1
11	75-781-3	SSS-HOL LCK3/4-16X3/8LG COATED	1
12	159-27-2	AXLE-TCR ANTI ROTATE	1
13	112-156-2	SNAP RING-SPIROLOX EXT .625	1
14	75-65-2	SSS 1/4-20X5/16 CONE PT	1
15	local	ADHESIVE- MEDIUM THREAD LOCKER (LOCTITE #242)	AR

Index No.	Part Number	Description	Qty.
21	12-281-1	CLAMP- TC WHEEL LOCK (Consists Of:)	1
22	97-734-2**	SHAFT-WHEEL CLAMP	1
23	97-684-2*	SPINDLE-KNOB	1
24	130-215-2	BALL-STEEL 5/16	6
25	97-735-2*	SHAFT-BALL ACTIVATOR	1
26	97-736-2*	SHAFT-BALL LOCK RELEASE	1
27	77-26-2	WASHER-FLAT 3/8 TPA-N ZP	2
28	98-453-2	SPRING-COMP .54 ODX2.75X.048	1
29	local	ADHESIVE- LOCTITE 263	AR
30	local	ADHESIVE- LOCTITE 243	AR
31	local	ADHESIVE-ACTIV8R, LOCTITE 7091	AR
32	192-223-2	CONE-SMALL BORE_SPEEDNUT	1
33	217-91-2**	COLLAR-WHEEL CLAMP HANDLE	1
34	74-684-2**	SSS 3/8-16X.50 DOG POINT	4
35	142-248-005	HANDLE-WHEEL CLAMP TORQUE	2
36	75-223-2	HHCS 1/4-20X2.25 ZP	2
37	98-579-2	SPRING-TORSION HANDLE RETURN	2
38	76-500-2	NUT-1/4-20 NYLON-INSERT	2
39	69-87-2	COVER-VINYL PLASTIC HANDLE	2
40	112-14-2	SNAP RING-#5133-37 OR EQUAL	1
41	135-364-2	PIN-ROLL 3/16X.500 LONG ZP	2
42	53-293-2	CAP-SHAFT BUMPER	1
43	74-392-2	FHSCS 5/16-18X1.25 BO	1

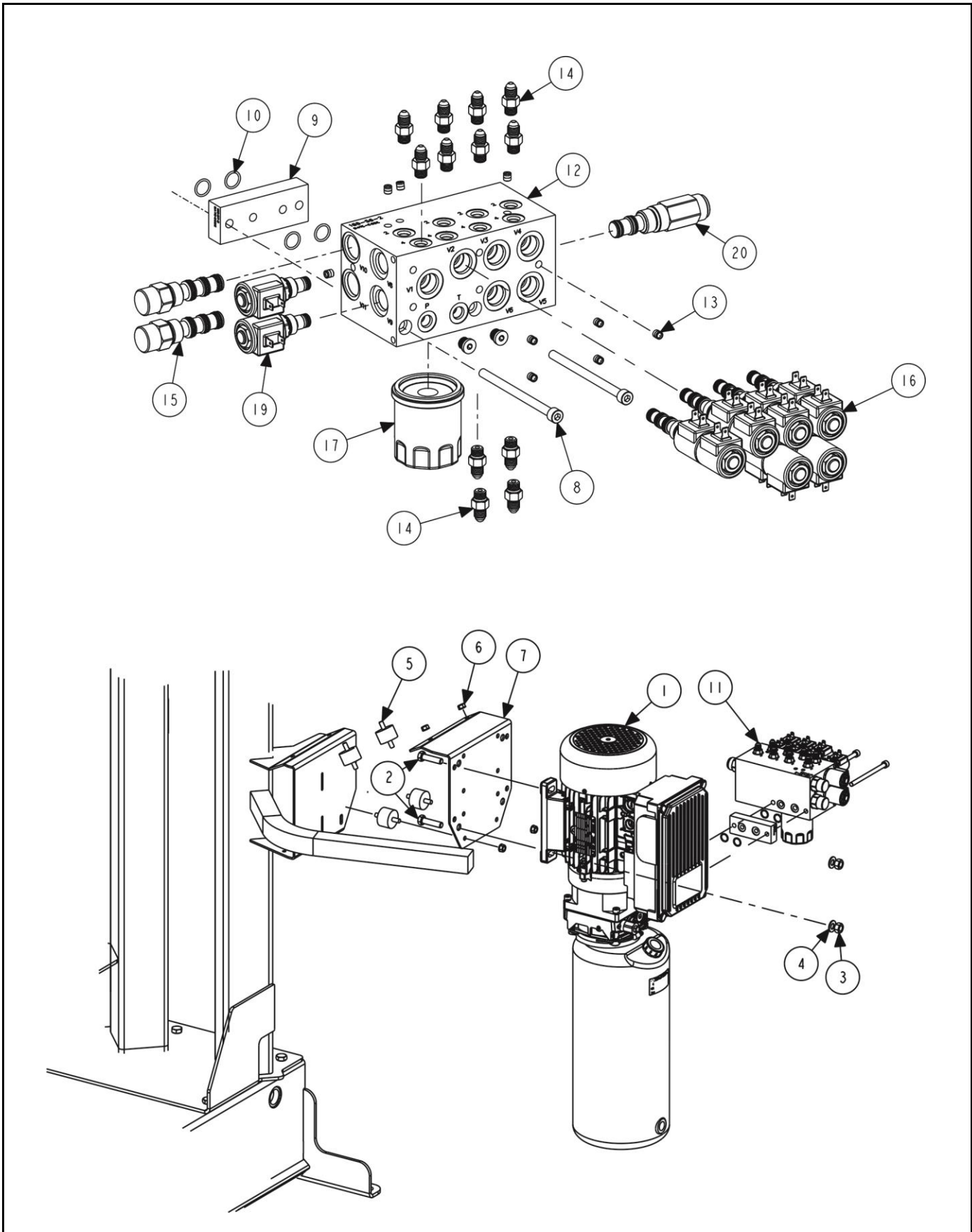
\* and \*\* NOTE: Loctite is used during the assembly of these parts. Disassembly is possible but not easy. Removal of ball activator (item 25) is particularly challenging.

Only\*\* If collar (item 33) connection to shaft (item 22) is NOT done with FOUR set screws (item 34 / 4 qty), then order all three items.



11250 HUNTER DRIVE BRIDGETON, MO 63044

PPP-Paint Code Required  
A/R-As Required  
REF-Reference



## POWER UNIT AND MANIFOLD

REFER TO NEXT SHEET FOR PARTS DESCRIPTION LISTING

Index No.	Part Number	Description	Qty.
1	139-91-2	PUMP-ASSY, 2.7GPM, 1700 PSI, Motor: 230VAC, 60HZ, 1PH	1
OR	139-92-2 (International only)	PUMP-ASSY, 3.5GPM, 1700 PSI, Motor: 400VAC, 3PH, 50HZ	1
OR	139-93-2 (International only)	PUMP-ASSY, 3.5GPM, 1700 PSI, Motor: 230VAC, 1PH, 50HZ	1
2	74-573-2	HHCS 7/16-14 X 1.75 FTHD	4
3	76-43-2	NUT-HEX 7/16-14	4
4	77-73-2	WASHER-FLAT 7/16 TPA-N ZP	4
5	98-594-2	SPRING- VIBRATION DAMP – 200 POUNDS	5
6	76-177-2	NUT-KEPS 5/16-18 ZP	10
7	11-1916-PPP	SUPPORT- MOTOR MOUNT TCM	1
8	74-676-2	SHCS - M8X1.25 120MM BO	2
9	185-57-2	MANIFOLD - TCM SPACER BLOCK	1
10	124-255-2	O-RING - SIZE 015 BUNA-N	4
11	108-304-3	MANIFOLD-TCM HYD UNIVERSAL (Consists Of:)	1
12	185-56-2	MANIFOLD - TCM HYDRAULIC V2	1
13	145-336-2	FITTING-EXPANSION PLUG	17
14	145-428-2	FITTING-SAE 37 DEG STR.	12
15	108-214-2	VALVE-PRESSURE COMPENSATOR	2
16	108-272-2	VALVE-DIR 4 WAY 3 POS CC	6
OR	145-530-2	FITTING-8-6 SAE STR THD CONN	1
17	136-130-2	FILTER-HYDRAULIC	1
18	145-540-2	FITTING-PLUG ORIFICE	2
19	108-271-2	VALVE-PROP 2 WAY NC	2
20	108-284-2	VALVE-PRESSURE REDUCING	1
21	43-185-2	PLUG - SAE-4	2

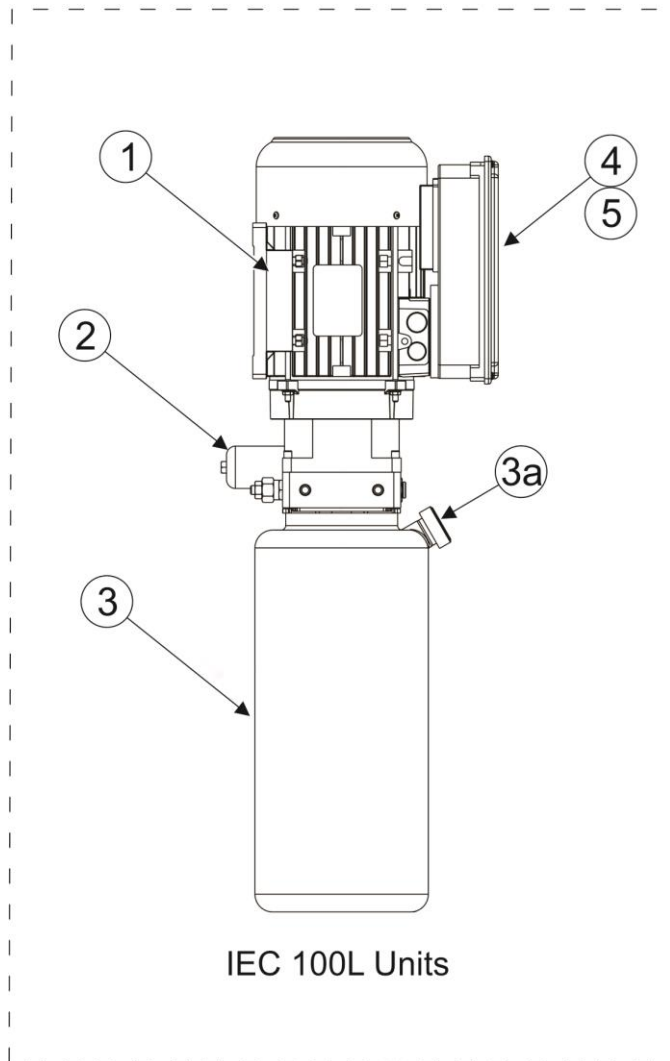
HYDRAULIC HOSE ROUTING / HOSE PART NUMBER

VALVE PORT NUMBER	FUNCTION	HOSE PART NUMBER
V1.2	MOTOR OPERATOR SIDE PORT	137-159-3 63 INCH (ORANGE) / 137-160-3 50 INCH
V1.4	MOTOR FAR SIDE PORT	137-159-3 63 INCH (YELLOW) / 137-160-3 50 INCH
V2.2	UPPER BEAD ROLLER CAP END	137-128-3 44 INCH
V2.4	UPPER BEAD ROLLER ROD END	137-132-3 18 INCH
V3.2	LOWER BEAD ROLLER CAP END	137-128-3 44 INCH
V3.4	LOWER BEAD ROLLER ROD END	137-132-3 18 INCH
V4.2	TOOL HOOK CAP END (INSERTION)	137-161-3 122 INCH
V4.4	TOOL HOOK ROD END (INSERTION)	137-161-3 122 INCH (BLACK)
V5.2	SLIDE BASE CAP END	137-129-3 36 INCH
V5.4	SLIDE BASE ROD END	137-160-3 50 INCH
V6.2	TOOL HEAD CAP END (ELEVATION)	137-129-3 36 INCH
V6.4	TOOL HEAD ROD END (ELEVATION)	137-125-3 60 INCH

HYDRAULIC MANIFOLD WIRING (38-1398-1)

FUNCTION	VALVE NUMBER	WIRE COLOR	CABLE TIES
SPINDLE ROTATE	V1 TOP / V1 BOTTOM	Orange-Red / Yellow-Green	Blue-Orange
UPPER BEAD ROLLER	V2 TOP / V2 BOTTOM	Blue-White / Brown-Black	Blue-Orange
LOWER BEAD ROLLER	V3 TOP / V3 BOTTOM	Orange-Red / Yellow-Green	Blue
TOOL HOOK	V4 TOP / V4 BOTTOM	Blue-White / Brown-Black	Blue
SLIDE BASE	V5 TOP / V5 BOTTOM	Blue-White / Brown-Black	Blue-Yellow
TOOL HEAD	V6 TOP / V6 BOTTOM	Orange-Red / Yellow-Green	Blue-Yellow
TOOLS PROPORTIONAL	V8	Yellow-Green	Blue-Green
SPINDLE PROPORTIONAL	V9	Orange-Red	Blue-Green





IEC 100L Units

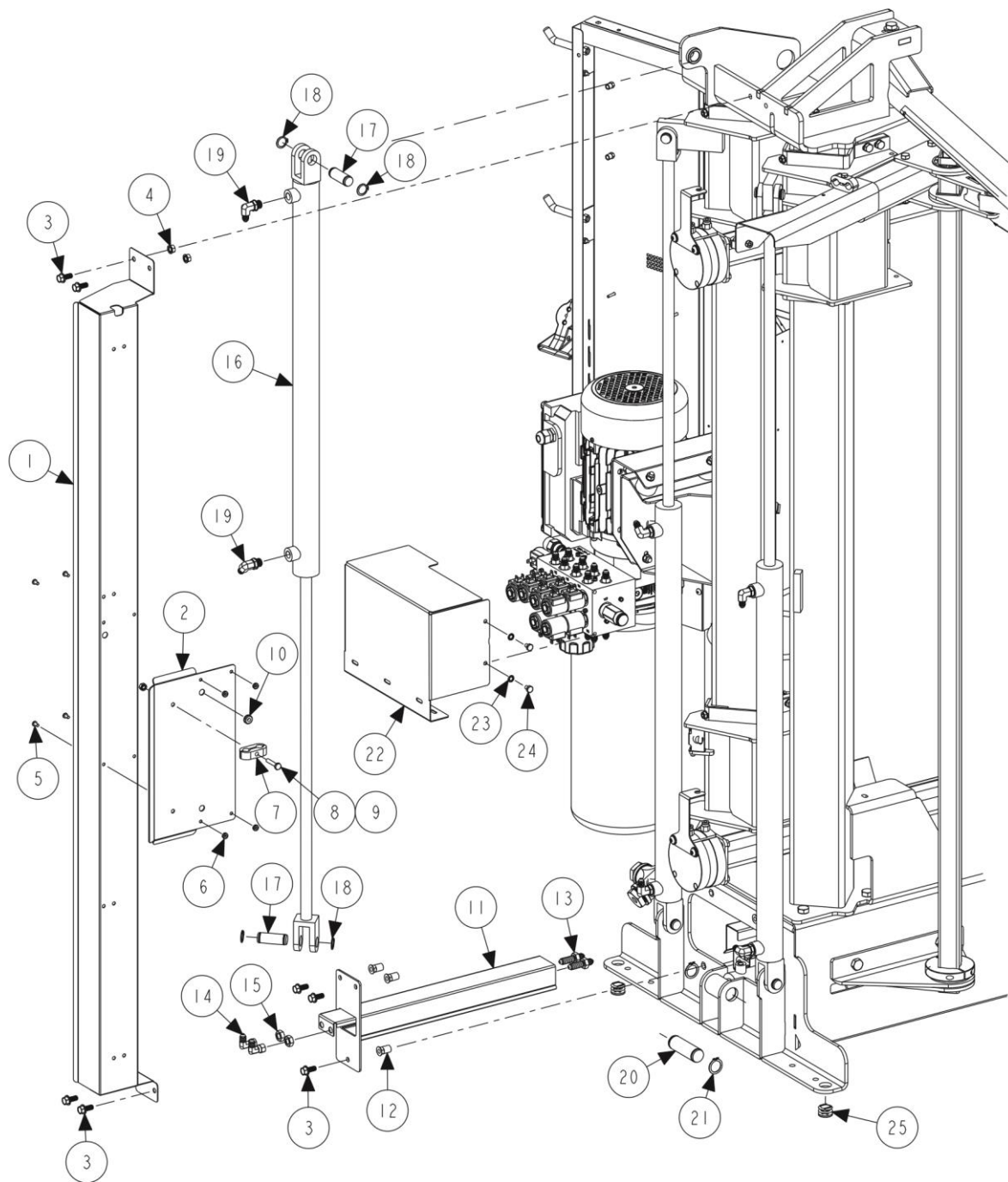
NOTE: Start and run capacitors  
located inside enclosures

## POWER UNIT REPLACEMENT PARTS

REFER TO NEXT SHEET FOR PARTS DESCRIPTION LISTING

## TECFLUID - 60 HZ (IEC 100L)

Index No.	Part Number	Description	Qty.
1	129-275-2	MOTOR, TECFLUID 60 HZ (IEC TYPE)	1
2	136-113-2	FILTER-HPU RETURN	1
2a	136-120-2	PUMP, TECFLUID INLET FILTER (Not Illustrated)	1
3	139-88-2	PUMP-TECFLUID RESERVOIR	1
3a	20-3965-2	KIT-TECFLUID TANK BRACKET (Not Illustrated)	1
4	88-75-2	CAPACITOR- TECFLUID START	1
5	88-76-2	CAPACITOR-TECFLUID RUN	1



## BACK SIDE – HYDRAULICS AND COVERS

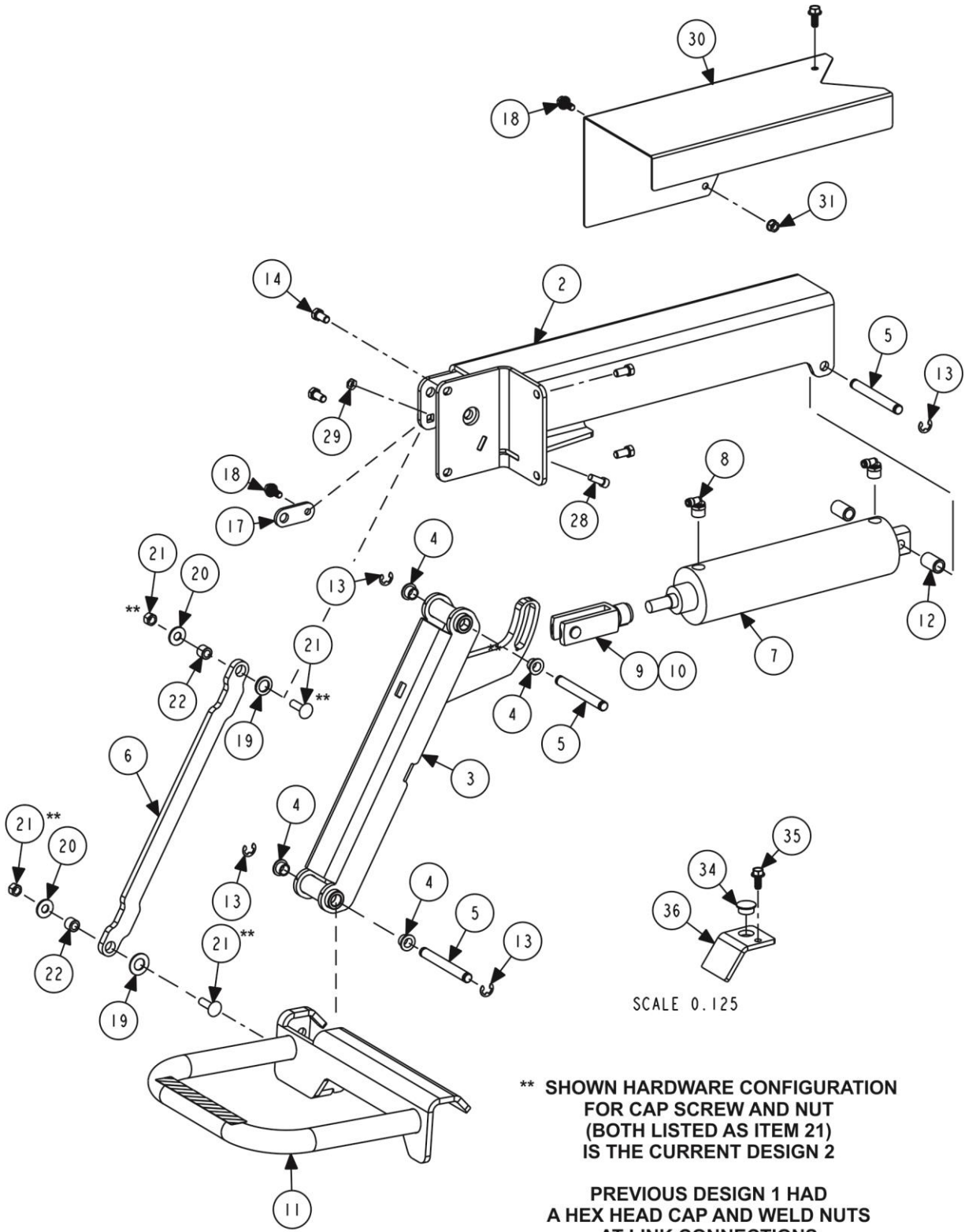
REFER TO NEXT SHEET FOR PARTS DESCRIPTION LISTING

Index No.	Part Number	Description	Qty.
1	54-1213-1	CHANNEL ASSEMBLY - TCM HOSE ROUTING	1
2	104-228-005	GUIDE - BEAD HOOK SERV LOOP	1
3	74-563-2	HHCS 5/16-18X.75 FLANGED	7
4	76-177-2	NUT-KEPS 5/16-18 ZP	2
5	75-404-2	SBHCS 10-32X.38 FTHD BO	4
6	76-61-2	NUT-KEPS 10-32 ZP	4
7	12-227-2	CLAMP-TUBE 1/2" DOUBLE	1
8	75-728-2	HHCS 1/4-20X1.25_GR5	1
9	76-85-2	NUT-KEPS 1/4-20 ZP	1
10	113-302-2	GROMMET-7/16 X 1/8 HOLE- 1/4ID	1
11	54-1178-1-005	CHANNEL-TCM HOSE SLIDE ASSEM	1
12	76-501-2	NUT-HEX INSERT 5/16-18	3
13	145-448-2	FITTING-BULKHEAD UNION	2
14	145-320-2	FITTING-7/16 SWIVEL NUT ELBOW	2
15	76-495-2	NUT-BULKHEAD UNION	2
16	140-101-2	CYL-HYD 38MMBR X 20RD X 660STK	3
17	135-505-2	PIN-CLEVIS 3/4 X 1.688	6
18	112-63-2	SNAP RING-TRUARC #5100-75	12
19	145-473-2	FITTING-4-6 SAE 37 DEG ELBOW	6
20	135-507-2	PIN-CLEVIS 1 X 2.75	1
21	112-88-2	SNAP RING-TRUARC 5100-100	2
22	232-397-005*	ENCLOSURE- TCM HYD MANIFOLD	1
23	77-13-2	WASHER-LOCK 1/4 INT TOOTH	3
24	75-41-2	HHCS 1/4-20X.38 FTHD ZP	3
25	43-189-2	PLUG-.875 X1 TUBE CAP	4

\* Decal 128-1515-2 (FLUID FLASH POINT) is on this part.

HYDRAULIC CYLINDERS / PINS / FITTINGS - PART NUMBER

FUNCTION	CYLINDER	PIN - CLEVIS	SNAP RINGS	HYDRAULIC FITTINGS
UPPER BEAD ROLLER	140-101-2	135-505-2 (2)	112-63-2 (4)	145-473-2 (2)
LOWER BEAD ROLLER	140-101-2	135-505-2 (2)	112-63-2 (4)	145-473-2 (2)
TOOL HOOK - ELEVATION	140-101-2	135-505-2 (2)	112-63-2 (4)	145-473-2 (2)
SLIDE BASE	140-100-2	135-507-2 135-505-2	112-88-2 (2) 112-63-2 (2)	SEE SPINDLE SHEET



SCALE 0.125

**\*\* SHOWN HARDWARE CONFIGURATION FOR CAP SCREW AND NUT (BOTH LISTED AS ITEM 21) IS THE CURRENT DESIGN 2**

**PREVIOUS DESIGN 1 HAD A HEX HEAD CAP AND WELD NUTS AT LINK CONNECTIONS**

# WHEEL LIFT

REFER TO NEXT SHEET FOR PARTS DESCRIPTION LISTING

Index No.	Part Number	Description	Current Design 2 Qty.	UNIQUE Design 1 ITEMS**.
1	20-3884-1	KIT - TCM - WHEEL LIFT (Consisting Of:)	1	
2	14-2089-1***	BRACKET - WHEEL LIFT MOUNT	1	
	14-1889-1***	BRACKET - WHEEL LIFT MOUNT		1
3	54-1172-1	CHANNEL ASM - WHEEL LIFT ARM (Contains:)	1	
4	113-343-2	BUSHING-FLG, 1/2 X 5/8 X 3/8 L	4	
5	135-685-2	PIN - WHEEL LIFT PIVOT	3	
6	120-151-005	LINK - WHEEL LIFT 4 BAR	1	
OR	120-139-005	LINK - WHEEL LIFT 4 BAR		1
7	140-142-1	CYLINDER ASM - TCR WHEEL LIFT	1	
OR	140-139-2	CYL - PNEUMATIC 3" X 8"	1	
8	145-482-2	FITTING-90ELBOW1/4ODX3/8NPT	2	
9	177-109-2	PIVOT - CLEVIS 5/8"-18 THREAD (includes Clevis Pin)	1	
10	Field Purchase	ADHESIVE- MEDIUM THREAD LOCKER	A/R	
11	122-42-1* ***	PLATFORM - TCM WHEEL LIFT	1	
OR	122-34-1* ***	PLATFORM - TCM WHEEL LIFT		1
12	46-839-2	SPACER - WHEEL LIFT CYL	2	
13	112-15-2	SNAP RING-#5133-50 OR EQUAL	5	
14	74-522-3	HHCS 3/8-16X.75 GR5 FTHD TL	4	
15	108-298-2	VALVE-FLOW CONTROL 1/4 TUBE	2	
16	16-423-2	TUBE-AIR 1/4 OD	46	
17	41-271-005	RETAINER - WHEEL LIFT PIVOT	1	
18	74-563-2	HHCS 5/16-18X.75 FLANGED	3	
19	77-492-2	WASHER-FLAT 5/8 MIL SPEC	2	
OR	77-189-2	WASHER-FLAT 5/8 SPECIAL ZP		2
20	77-66-2	WASHER-FLAT 3/8 TPA-W ZP	2	
21	74-253-3	BOLT CARRIAGE-3/8-16 X 1 1/4 inch	2	
AND	76-18-2	NUT-GRIP 3/16-16 ZP	2	
OR	74-677-3**	HHCS-3/8-16 X 1.125 GR8 ZP		2
22	106-199-2	SLEEVE-.625X.380X.500	2	
23	94-46-2	TIE-CABLE 11" BLACK	6	
24	43-184-2	PLUG - SNAP IN, .31" - .33" ID (Not Shown)	1	
25	108-299-2	VALVE- 5 PORT- CLOSED CENTER (See Sheet 6)	1	
AND	49-105-1	GASKET KIT - SINGLE SMC VQZ VALVE (gasket and screws)	1	
AND	145-357-2	FITTING-1/4 PLUG-IN ELBOW	2	
26	128-1938-2	DECAL-FOOT PEDAL (Not Shown)	1	
27	37-802-1	WIRE ASM-MTC AIR VALVES	1	
28	74-376-2	SHCS-5/16-18X7/8 BO	1	
29	76-176-2	NUT-JAM 5/16-18 ZP	1	
30	69-1776-005	COVER- TCM WHEEL LIFT SLIDE	1	
31	76-177-2	NUT-KEPS 5/16-18 ZP	2	
32	164-135-1	LEVER ASM-FOOT PEDAL (See Sheet 4)	1	
33	74-295-2	SHCS 5/16-18X.50 FTHD ZP (See Sheet 4)	3	
34	113-387-2	GROMMET-13/16" HOLE X 9/16" ID (When WL is added)	1	
OR	43-129-2	PLUG-HEYCO PRY OUT .812 DIA (For no WL))	1	
35	74-563-2	HHCS 5/16-18X.75 FLANGED	1	
36	69-1748-PPP	COVER-TC2 WHEEL LIFT HOSE PORT	1	

\* Decal 128-245-2 (YELLOW & BLACK) is included with this part.

\*\* Outward hex head of Cap Screw attaching lower Link (item 6) is indicator of older design 1. Newer design 2 has a nut attached to a carriage bolt (as shown above).

\*\*\* Kit 20-4112-1 is needed when replacing old platform (item 11) or old bracket (item 2) or both with newer design 2 version. Kit contains new link and associated hardware (items 6, 20, 21, 22). Some of the Design 2 hardware may not be needed.

