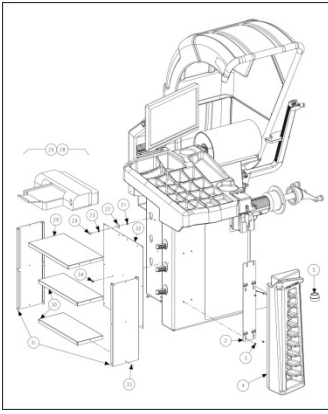
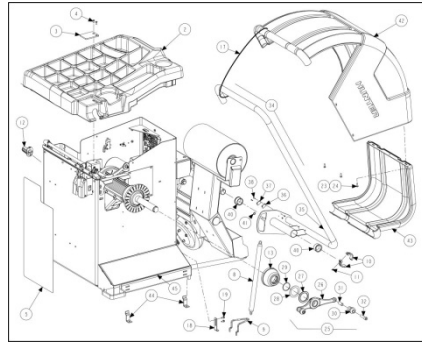


* (FOR WHEEL LIFT,
REFER TO PARTS
DRAWING 12-28)

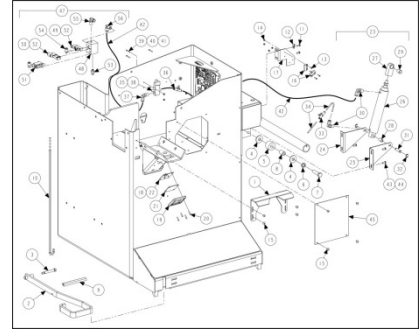
ROAD FORCE TOUCH (RFT), SMARTWEIGHT TOUCH (SWT) & HN (SWHN)



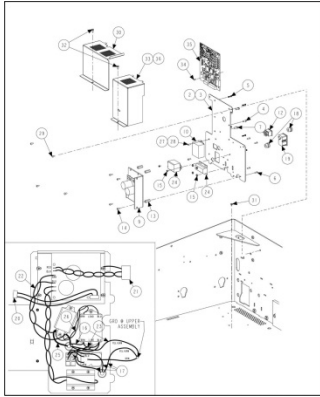
SHEET 3



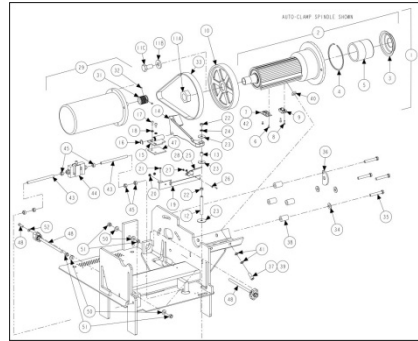
SHEET 4



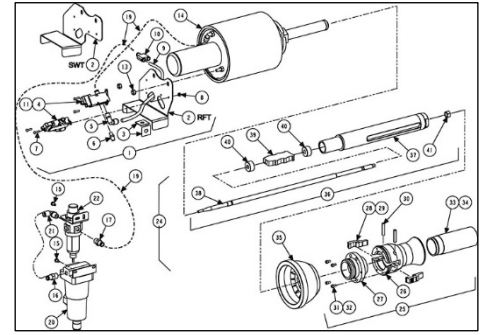
SHEET 5



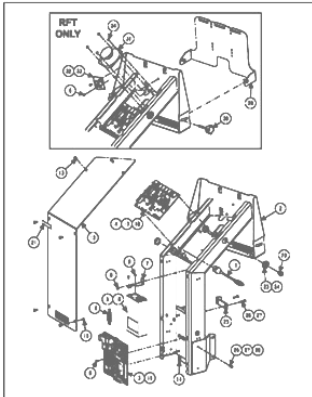
SHEET 6



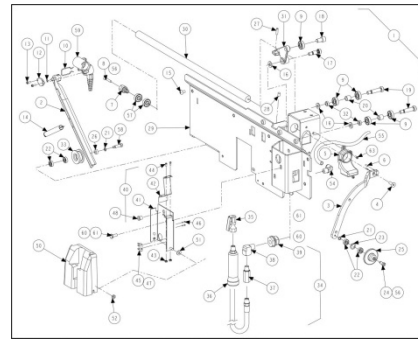
SHEET 7



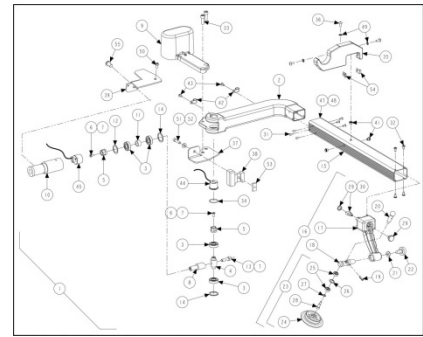
SHEET 8



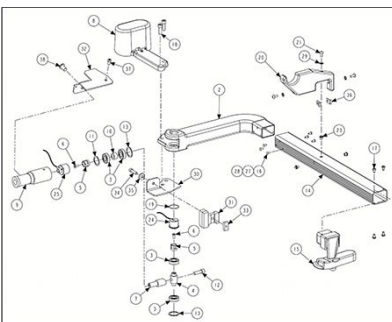
SHEET 9



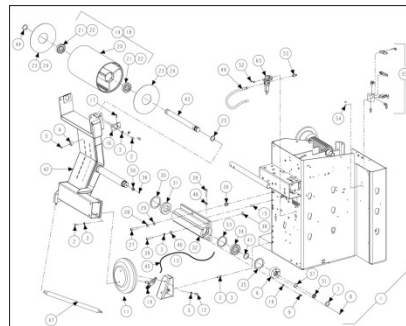
SHEET 12 (RFT)



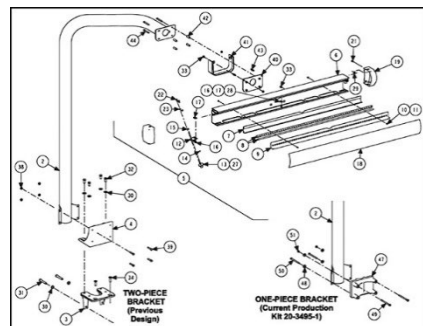
SHEET 14 (RFT)



SHEET 15 (SWT)



SHEET 16



SHEET 17

ROAD FORCE TOUCH (RFT), SMARTWEIGHT TOUCH (SWT) & HN (SWHN)

REFER TO NEXT SHEET FOR PARTS DESCRIPTION LISTING

PARTS DESCRIPTION LISTING

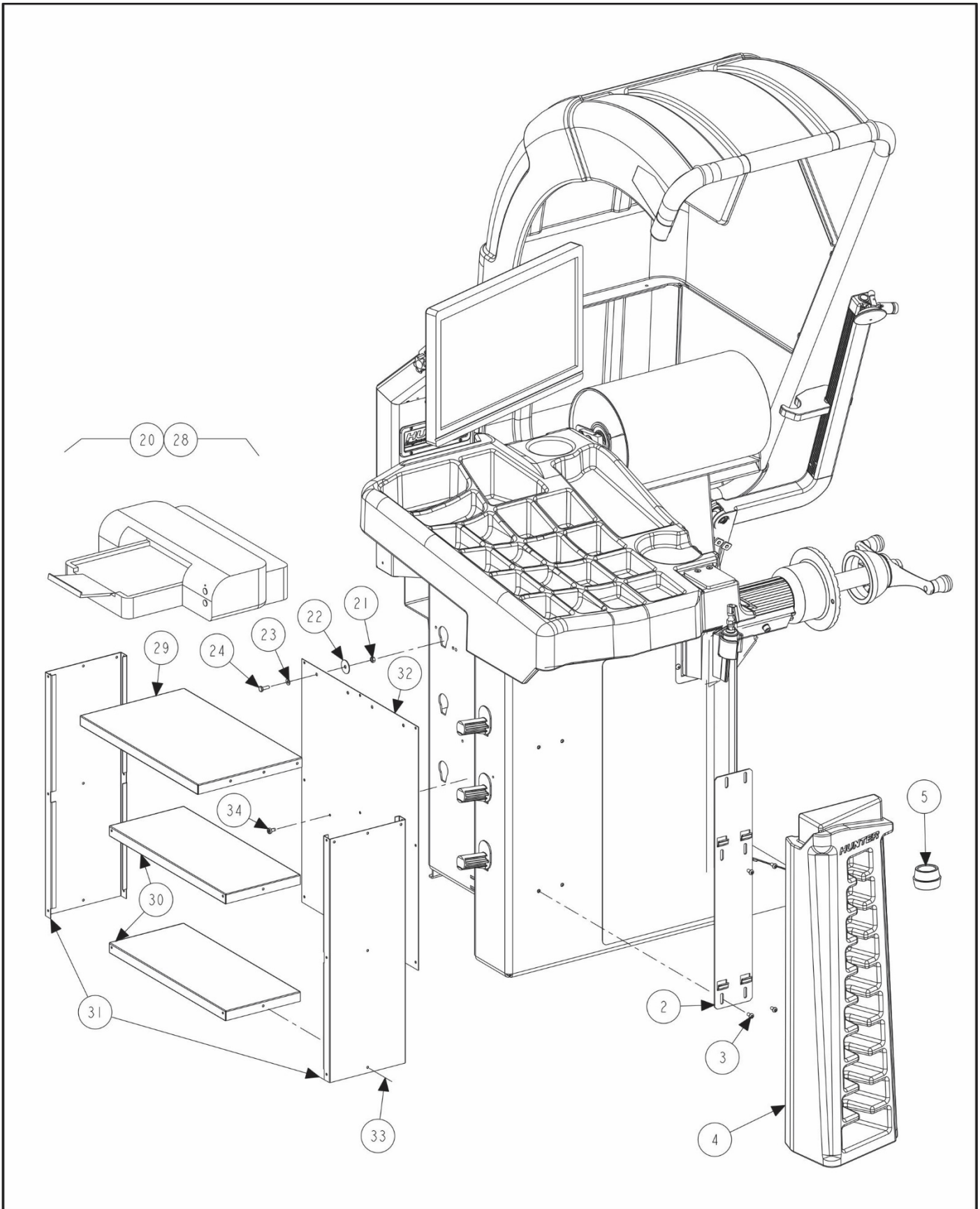
Sheet No.	Description <i>(PDF navigation - click on image or description to go to sheet)</i>
.3	COLLET STORAGE AND PRINTER OPTION
.4	WEIGHT TRAY, HOOD AND ETC (MOSTLY FIELD INSTALLED ITEMS)
.5	TUB COMPONENTS (FACTORY INSTALLED)
.6	ELECTRIC PANEL
.7	VIBRATION STRUCTURE
.8	SPEEDCLAMP FEATURE
.9	TOUCH SCREEN SUPPORT (SWT and RFT)
.10	CURRENT 14GA DISPLAY SUPPORT (SWHN)
.11	DISPLAY SUPPORT (SWHN)
.12	RFT INNER DATASET ARM, 103-266-1
.13	SWT and SWHN INNER DATASET ARM, 103-270-1
.14	RFT OUTER DATASET ARM, 103-153-1
.15	SWT and SWHN OUTER DATASET ARM, 103-180-1 / 103-303-1
.16	RFT LOAD ROLLER
.17	TOP DEAD CENTER LASER SYSTEM

ADDITIONAL PARTS DRAWINGS

	Form Number	Description	BALANCERS
.1	Form 12-28	BALANCER WHEEL LIFT (KIT 20-3101-1)	RFT1X, RFT3X, SWT1X, SWT3X, SWH1X, SWH3X

BASE ASSEMBLIES

	Part Number	Description	BALANCERS
.1	72-574-1	BASE, RFT BALANCER	RFT00, RFT01, RFT02, RFT03
.2	72-574-1	BASE, RFT BALANCER	RFT10, RFT11, RFT12, RFT13
.3	72-575-1	BASE, RFT BALANCER AC	RFT20, RFT21, RFT22, RFT23
.4	72-575-1	BASE, RFT BALANCER AC	RFT30, RFT31, RFT32, RFT33
.5	72-577-1	BASE, SWT BALANCER	SWT00, SWT01, SWT02, SWT03
.6	72-577-1	BASE, SWT BALANCER	SWT10, SWT11, SWT12, SWT13
.7	72-578-1	BASE, SWT BALANCER AC	SWT20, SWT21, SWT22, SWT23
.8	72-578-1	BASE, SWT BALANCER AC	SWT30, SWT31, SWT32, SWT33
.9	72-704-1	BASE - SWHN SC BALANCER	SWHN20
.10	72-659-1	BASE - SWHN BALANCER	SWHN00

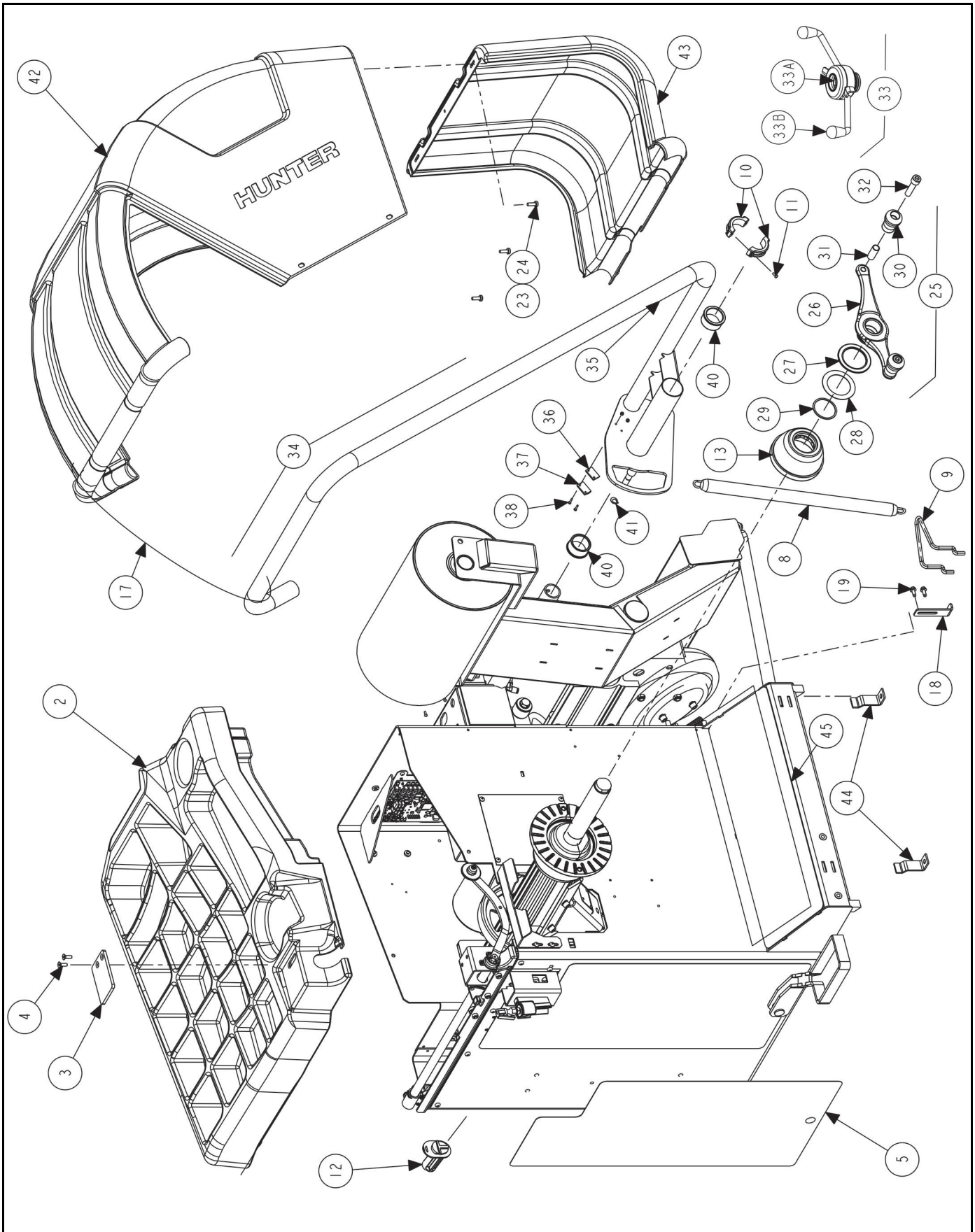


COLLET STORAGE AND PRINTER OPTION

REFER TO NEXT SHEET FOR PARTS DESCRIPTION LISTING

PARTS DESCRIPTION LISTING

Index No.	Part Number	Description	Qty.
.1	base	BASE, RFT BALANCER	
.2	14-1470-005	BRACKET, CONE SUPPORT	.1
.3	75-758-2	SOCKET BUTTON HEAD CAP SCREW 1/4-20 X .63 INCH	.4
.4	56-70-2	CARRIER, CONE, BALANCER FRONT LEFT-HAND	.1
.5	20-2711-1	KIT, GEN 4 BALANCER CENTERING (Standard on RFT) (Consisting Of:)	.1
.6	20-2683-1	KIT, P-3/4TON DUAL TAPER COLLET	.1
.7	192-213-1	CONE, 2.10-2.31, 2.26-2.47 (GREY / BLACK STRIPED)	.1
.8	192-214-1	CONE, 2.42-2.63, 2.58-2.79 (YELLOW / BLACK STRIPED)	.1
.9	192-215-1	CONE, 2.74-2.95, 2.89-3.11 (SMALL GREEN / BLACK STRIPED)	.1
.10	192-216-1	CONE, 3.05-3.27, 3.21-3.42 (SMALL BLUE / BLACK STRIPED)	.1
.11	192-217-1	CONE, 3.37-3.58, 3.53-3.74 (RED / BLACK STRIPED)	.1
.12	192-218-1	CONE, 3.69-3.90, 3.85-4.06 (ORANGE / BLACK STRIPED)	.1
.13	192-219-1	CONE, 4.01-4.22, 4.17-4.38 (LIGHT GREY / BLACK STRIPED)	.1
.14	192-220-1	CONE, 4.32-4.54, 4.48-4.70 (PURPLE / BLACK STRIPED)	.1
.15	192-221-1	CONE, 4.64-4.85, 4.80-5.01 (BIG GREEN / BLACK STRIPED)	.1
.16	192-222-1	CONE, 4.96-5.17, 5.12-5.33 (BIG BLUE / BLACK STRIPED)	.1
.17a	46-653-2	SPACER, 1.50 INCH WHEEL OFFSET MTG (Not Illustrated)	.1
.17b	175-392-1	ADAPTOR, BALANCER CUP WITH RETAINER 6 INCH	.1
.17c	106-157-2	SLEEVE, CLAMPING 6 INCH CUP	.1
.18	20-2680-1	KIT, BALANCER SOFTWARE (Not Illustrated)	.1
.19	20-1650-1	KIT, RIM TAGS (Not Illustrated)	.1
.20	20-2714-1	SHELF PRINTER, GEN 4 BALANCER (Optional) (Consisting Of:)	.1
.21	76-368-2	NUT, LOCK 1/4-20 NYLON INSERT	2
.22	77-144-2	WASHER, FENDER 1/4 INCH	2
.23	77-67-2	WASHER, FLAT 1/4 INCH	2
.24	75-29-2	HEX HEAD CAP SCREW 1/4-20X.75 INCH	2
.25	38-954-2	CABLE, USB 2.0 A/B 2 METER (Not Illustrated)	1
.26	28-90-2	FASTENER, VELCRO 2 INCH HOOK SIDE (Not Illustrated)	1
.27	28-89-2	FASTENER, VELCRO 2 INCH LOOP SIDE (Not Illustrated)	1
.28	215-179-1	SHELF ASSEMBLY, PRINTER (Consisting Of:)	1
.29	215-180-005	SHELF, PRINTER TOP	1
.30	215-134-005	SHELF, PRINTER SUPPORT BALANCER	2
.31	71-236-005	SIDE, PRINTER SHELF BALANCER	2
.32	171-283-005	PANEL, REAR PRINTER SHELF	1
.33	48-56-2	RIVET, BLIND 3/16 X 1/4 INCH	23
.34	75-458-2	SCREW, SELF-TAPPING 10-16 X 1 INCH	2
.35	38-1155-2	CABLE, IEC C13/C14 3 FEET (Not Illustrated)	1
.36	38-911-2	CABLE, MONITOR POWER TO PC POWER (Not Illustrated)	1
.37	128-1397-3	DECAL, RFT COMPOSITE (Not Illustrated)	1
OR	128-1418-3	DECAL, SWT COMPOSITE (Not Illustrated)	1
OR	128-2021-3	DECAL, SWH COMPOSITE (Contains decal for DAQ 45-1835-1) (Not Illus.)	1
OR	128-1799-3	DECAL, SWH COMPOSITE (Contains older DAQ decal 128-1798-2)	1
.38	128-603-2	DECAL, AIR PRESSURE LIMITS (Not Illustrated)	1
.39	24-164-2	NAMEPLATE GSP9700 PATENT (Not Illustrated)	1
.40	128-1419-3	DECAL, WHEEL BALANCER SAFETY (Not Illustrated)	1



WEIGHT TRAY, HOOD AND ETC (MOSTLY FIELD INSTALLED ITEMS)

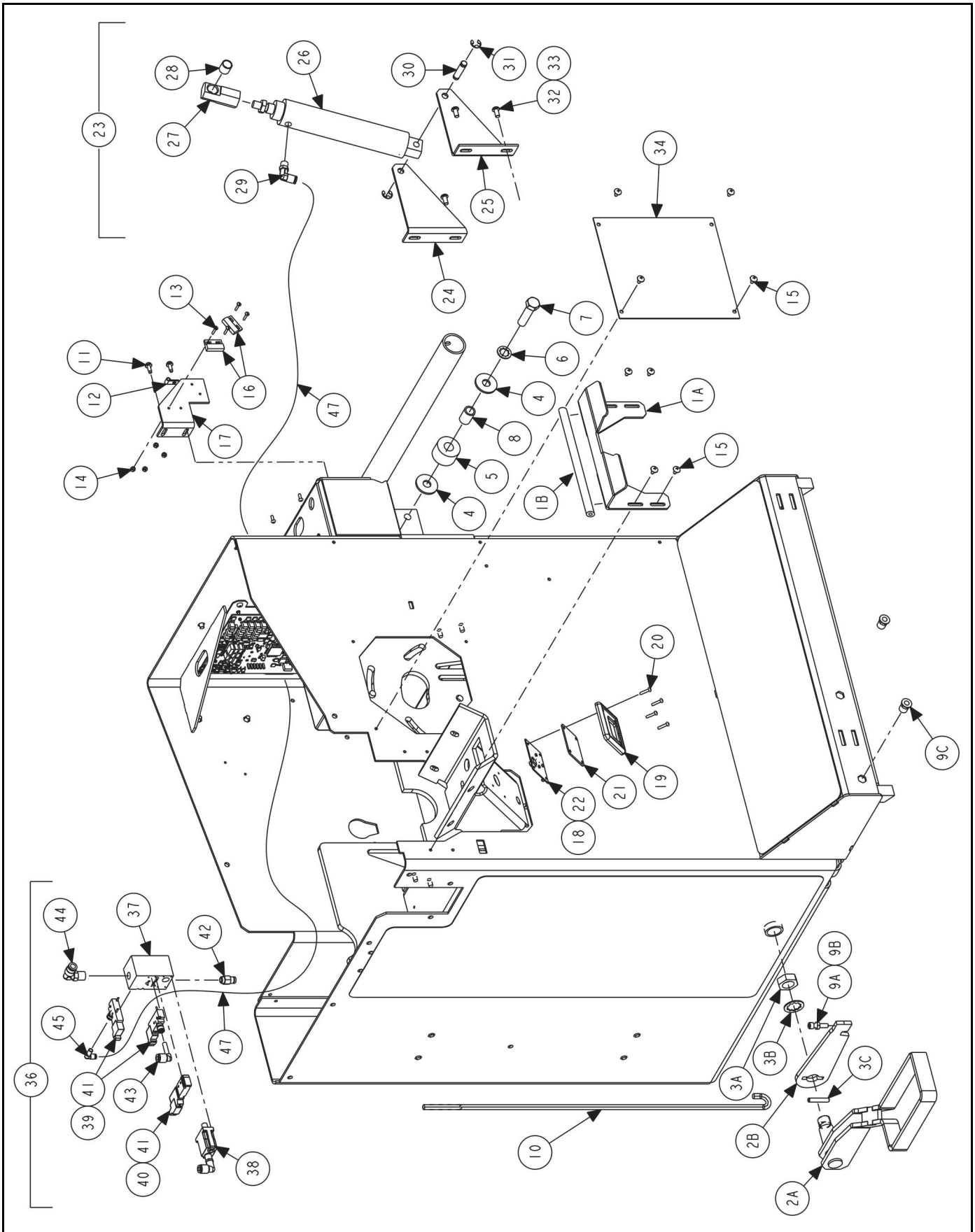
REFER TO NEXT SHEET FOR PARTS DESCRIPTION LISTING

PARTS DESCRIPTION LISTING

Index No.	Part Number	Description	Qty.
1	BASE	BASE, RFT BALANCER	
2	69-1364-2	COVER, WEIGHT TRAY TRIM	1
3	51-2168-2	PLATE, WEIGHT ANVIL 9200	1
4	75-226-2	FLAT HEAD SOCKET CAP SCREW 1/4-20 X 1.00 INCH	2
5	128-1568-2	DECAL, ROAD FORCE TOUCH	1
OR	128-1572-2	DECAL, SMART WEIGHT TOUCH	1
OR	128-1801-2	DECAL, SMART WEIGHT HYBRID	1
6	20-2145-1	KIT, GSP BALANCER ACCESSORIES (Consists Of:)	1
7	65-72-2	WEIGHT, CALIBRATION (Not Illustrated)	1
8	98-303-2	SPRING, HOOD	1
9	216-43-2	HOOK, LOWER SPRING MOUNT, GSP BALANCER	1
10	12-277-2	CLAMP HALF, 1.47 INCH SHAFT	2
11	75-35-2	ROUND HEAD MACHINE SCREW 10-32 X .63 INCH	2
12	233-44-2	POST, CONE HOOK PLASTIC	9
13	175-353-1	ADAPTOR, BALANCER CUP WITH RETAINER (Includes)	1
13	41-138-2	RETAINER-ROUND WIRE, 2.00 DIAMETER	1
14	46-320-2	SPACER, SPINDLE SHAFT (Not Illustrated)	1
15	106-82-2	SLEEVE, CLAMPING CUP (Not Illustrated)	1
16	223-68-1	RING, BALANCER PRESSURE WITH RETAINER (Not Illustrated)	1
17	94-35-2	TIE-WIRE, 15 INCH X 1/2 INCH	7
18	14-1346-005	BRACKET, BALANCER LEG LONG	1
19	75-317-2	SCREW, THREAD ROLLING 1/4-20 X 5/8 INCH	2
20	221-589-2	TOOL, WEIGHT HAMMER / PLIERS (Not Illustrated)	1
21	221-658-2	TOOL, NYLON HAMMER HEAD (Not Illustrated)	1
22	221-659-2	TOOL, ADHESIVE WEIGHT REMOVER (Not Illustrated)	1
23	75-128-2	PAN HEAD MACHINE SCREW 1/4-20 X 3/4 INCH	3
24	76-367-2	NUT-FLANGE 1/4-20	3
25	76-433-3 (or 76-597-3)	NUT, FORGED WINGNUT W/ HANDLES (597 is long handle version) (C. Of:)	1
26	76-426-2 (or 76-596-2)	NUT, FORGED WINGNUT (596 is long handle version)	1
27	130-250-3*	BEARING WITH WASHER, NEEDLE 55 mm*	1
28	130-250-3*	BEARING WITH WASHER, NEEDLE 55 mm *	1
29	112-87-2	SNAP RING, SMALLEY WS-200	1
30	142-148-2	HANDLE, WINGNUT	2
31	106-154-2	SLEEVE, WINGNUT HANDLE	2
32	74-206-2	SOCKET HEAD CAP SCREW 1/2-13 X 2 INCH, (FULL-THREAD)	2
33	76-574-2	NUT-QUICKNUT ERGONOMIC (Optional)	1
33A	20-3417-2	KIT, REPAIR FOR QUICKNUT ERGO (Clamping Mechanism)	1
33B	20-3519-2	KIT, KNOB REPAIR FOR QUICKNUT (Plastic Handles)	1
34	69-1396-1	COVER, GEN4 HOOD ASSEMBLY, RFT (Consisting Of:)	1
OR	69-1407-1	COVER, GEN4 HOOD ASSEMBLY, SWT (Consisting Of:) (Not Illustrated)	1
OR	69-1666-1	COVER, GEN4 HOOD ASSEMBLY, SWH (Consisting Of:) (Not Illustrated)	1
35	16-995-1-005	TUBE ASSEMBLY, GEN4 WHEEL COVER, RFT	1
OR	16-1017-1-005	TUBE ASSEMBLY, GEN4 WHEEL COVER, SWT	1
OR	16-1186-1-005	TUBE ASSEMBLY, WHEEL COVER, SWH (Not Illustrated)	1
36	46-445	SPACER-MAGNET	1
37	60-24-2	MAGNET-REED SWITCH ACTUATOR	1
38	75-584-2	TRUSS HEAD MACHINE SCREW 4-40X 5/8 INCH STAINLESS STEEL	2
39	76-366-2	NUT, LOCK 4-40 NYLON INSERT	2
40	130-141-2	BEARING, FLANGED 1.5 X 1.0 INCH	2
41	112-15-2	SNAP RING, #5133-50 OR EQUAL	1
42	69-1367-2	COVER, WHEEL, GEN4 BALANCER (RFT and SWT)	1
OR	69-1175-2	COVER-WHEEL 9600LT (SWHN, one-piece cover)(Not Illustrated)	1
43	69-1368-2	COVER, RR WHEEL W/ LOAD ROLLER (RFT)	1
OR	69-1369-2	COVER, RR WHEEL W/O LOAD ROLLER (SWT) (Not Illustrated)	1
44	216-111-2	HOOK, FLOOR/SHIPPING HOLD DOWN	3
45	64-158-2	PAD, FOOT	1

* Wingnut service item 130-250-3 contains needle thrust bearing and two thrust washers (only one washer is needed).





TUB COMPONENTS (FACTORY INSTALLED)

REFER TO NEXT SHEET FOR PARTS DESCRIPTION LISTING

PARTS DESCRIPTION LISTING

Form 12-26, 09-19d

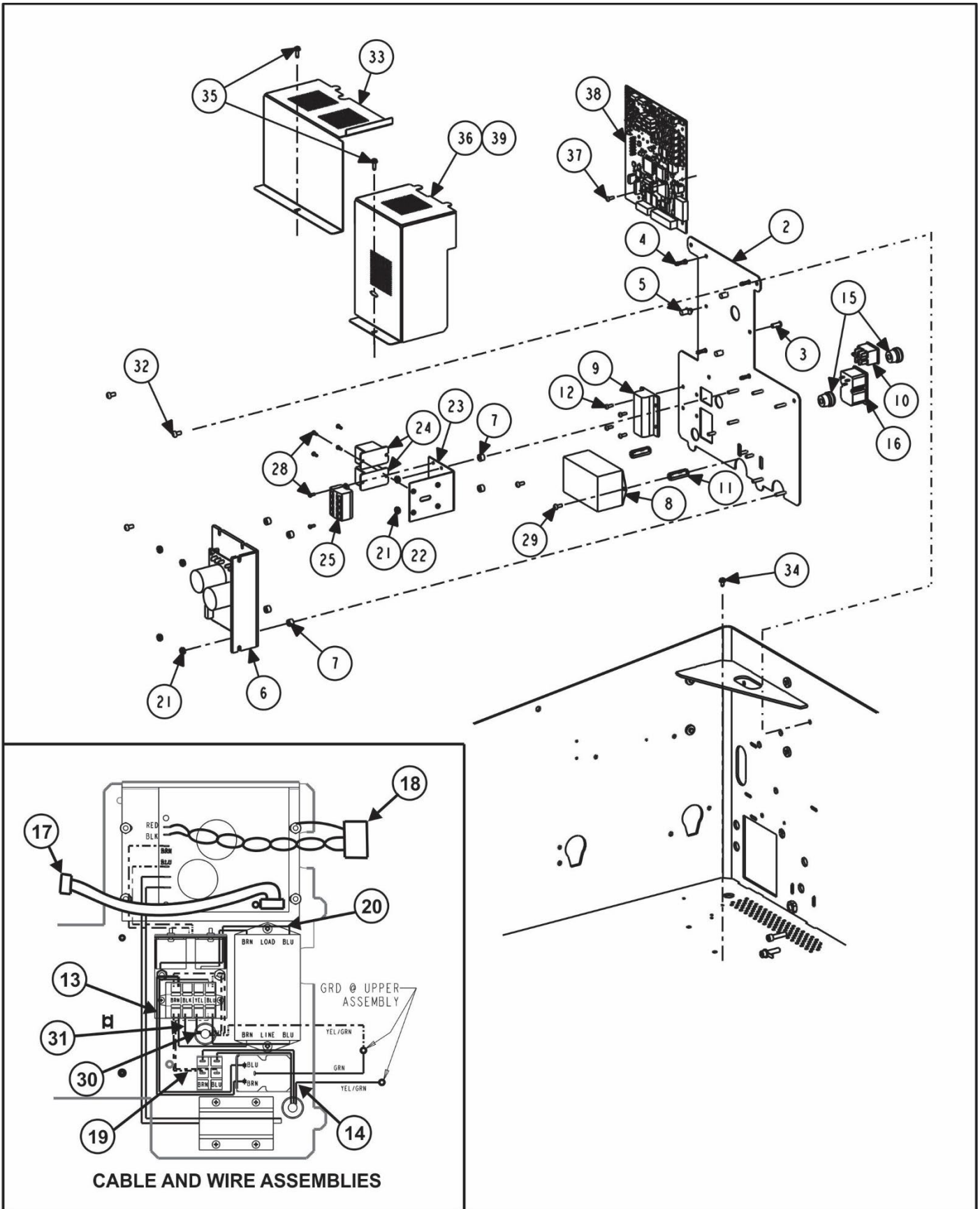
Sheet 5 of 17

Index No.	Part Number	Description	Qty.
.1A	14-1231-005 / 14-1839-005	BRACKET, SUPPORT/SHIELD (Old (shown) / New (not shown))	1
.1B	141-110-2	EXTRUSION- 5/8 INCH X 5/8 INCH FOAM	6.5 IN.
.2A	177-90-1-005	PIVOT, BRAKE WELDMENT	1
.2B	164-119-005	LEVER, BRAKE	1
.3A	76-108-2	NUT-JAM 3/4-16	1
.3B	77-50-2	WASHER-LOCK 3/4 INCH INTERNAL TOOTH	1
.3C	135-436-2	PIN-DOWEL 1/4 X 1 3/8 INCH HARDENED	1
4	77-214-2	WASHER, FLAT 1/2 INCH SPECIAL	2
5	228-25-2	STOP, 1.50 INCH O.D. RUBBER TUBE	1
6	77-22-2	WASHER, LOCK 1/2 INCH INTERNAL TOOTH	1
7	74-345-2	HEX HEAD CAP SCREW 1/2-13 X 2.00 INCH, GRADE 5	1
8	113-174-2	BUSHING, STEEL .69 OD X .522 INCH ID	1
.9A	75-239-2	SOCKET HEAD CAP SCREW 1/4-20 X 1.00 INCH (Full-Thread)	1
.9B	76-51-2	NUT-JAM 1/4-20	1
.9C	76-413-2	NUT-HEX INSERT 5/16-18	2
.10	63-295-2	ROD, BRAKE ACTUATOR SHORT	1
.11	75-413-2	SCREW, SELF-TAPPING 10-32 X .50 INCH	2
.12	12-145-2	CLAMP, CABLE 1/4 INCH DIAMETER	1
.13	75-584-2	TRUSS HEAD MACHINE SCREW 4-40 X 5/8 INCH STAINLESS STEEL	4
.14	76-366-2	NUT, LOCK 4-40 NYLON INSERT	6
.15	75-401-2	TRUSS HEAD SHEET METAL SCREW 10 X 1/2 INCH	8
.16	18-497-1	SWITCH, REED SWITCH ASSEMBLY	2
.17	14-1116	BRACKET, 9722 HOOD SWITCH	1
.18	45-1403-1	PCA, WHEEL LIGHT XPE (RFT Only)	1
.19	69-1375-2	COVER, SPINDLE LED (RFT Only)	1
.20	75-801-2	SCREW, SELF-TAPPING 6-32 X 3/4 INCH (RFT Only)	4
.21	44-38-2	WINDOW, WHEEL ILUMINATION (RFT Only)	1
.22	37-625-1	WIRE ASSEMBLY, SPINDLE LIGHT (RFT Only)	1
.23	140-109-1	CYLINDER ASSEMBLY, AUTO HOOD (RFT Only) (Consisting Of:)	1
.24	14-1330-005	BRACKET, HOOD CYLINDER, RIGHT-HAND (RFT Only)	1
.25	14-1331-005	BRACKET, HOOD CYLINDER, LEFT-HAND (RFT Only)	1
.26	140-110-2	CYLINDER, AUTO HOOD (RFT Only)	1
.27	121-306-2	BLOCK, CYLINDER ROD END (RFT Only)	1
.28	113-315-2	BUSHING, ROD END (RFT Only)	1
.29	145-409-2	FITTING, 1/4 TUBE 1/8 INCH NPT METALELBOW	1
.30	135-511-2	PIN, CLEVIS, 3/8 DIAMETER, 1-1/4 INCH LONG	1
.31	112-14-2	SNAP RING, #5133-37 OR EQUAL	2
.32	77-71-2	WASHER, LOCK 1/4 INCH HELICAL SPRING	4
.33	75-758-2	SOCKET BUTTON HEAD CAP SCREW 1/4-20 X .63 INCH	4
AND	76-414-2	NUT-HEX INSERT 1/4-20	4
.34	69-1028-PPP	COVER, SPINDLE DRIVE MOTOR	1
.35	111-140-1	LOAD ROLLER ASSEMBLY, GEN4 RTF (Includes:)	REF
.36	108-236-1	PNEUMATIC ASSEMBLY, RFT BALANCER (Consisting Of:)	1
.37	185-35-2	MANIFOLD, PNEUMATIC, RFT (Not Available)	1
.38	136-79-2	REGULATOR MANIFOLD MOUNT & FITTING	1
.39	108-195-2	VALVE, 3-PORT MANIFOLD MOUNT	2
.40	108-196-2	VALVE, 5 PORT MANIFOLD MOUNT	1
.41	38-1094-1	CABLE, MANIFOLD ASSEMBLY	3
.42	145-216-2	FITTING, 5/16 INCH TUBE X 1/8 INCH NPT ADAPTOR	1
.43	145-357-2	FITTING, 1/4 INCH NPT PLUG IN ELBOW	1
.44	145-183-2	FITTING, 1/4 INCH NPT ELBOW SWIVEL	1
.45	145-467-2	FITTING, 1/4 TO 5/32 INCH PLUG-IN ELBOW	1
.46	FIELD OBTAIN	LOCTITE #545 THREAD SEALANT (Not Illustrated)	A/R
.47	.16-450-2	TUBE, AIR 5/32 INCH OUTER DIAMETER	40 in.

HUNTER
Engineering Company

11250 HUNTER DRIVE BRIDGETON, MO 63044

PPP-Paint Code Required
A/R-As Required
REF-Reference



ELECTRIC PANEL

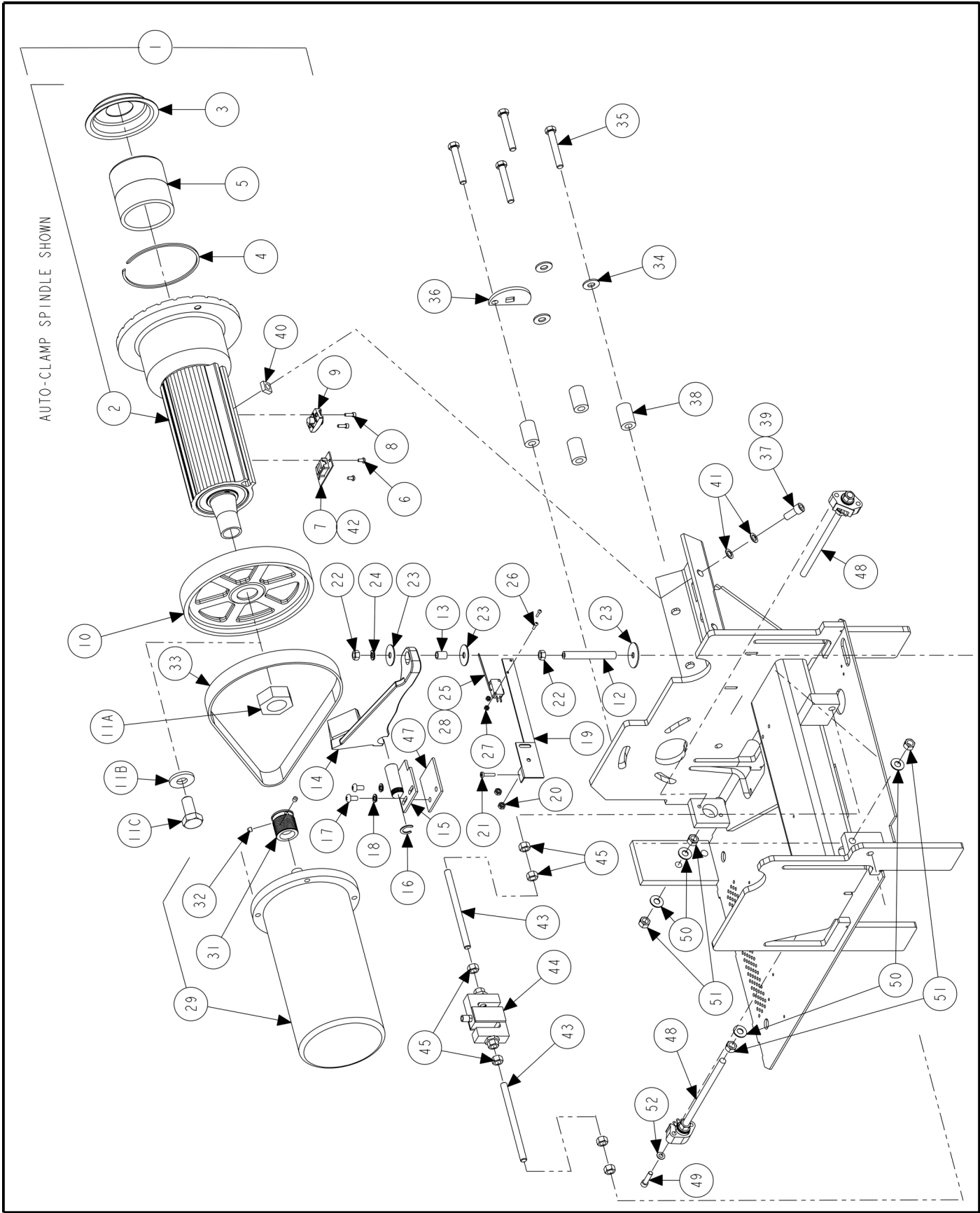
REFER TO NEXT SHEET FOR PARTS DESCRIPTION LISTING

PARTS DESCRIPTION LISTING

Index No.	Part Number	Description	Qty.
1	232-269-1	ELECTRIC PANEL, GEN4 BALANCER (Consisting Of:)	1
2	51-2748-1	PLATE ASSEMBLY, ELECTRONICS, GEN4 (Includes:)	1
3	46-581-2	SPACER, PRESS IN 632 X .562 INCH LONG	1
4	46-580-2	SPACER, SNAP TOP STANDOFF	4
5	46-579-2	SPACER, NYLON PUSH IN .437 INCH HIGH	3
6	232-232-2	DC MOTOR DRIVE, 230V/8A	1
7	46-704-2	SPACER #8 X .25 INCH LONG	4
8	136-108-2	FILTER, POWER LINE RFI	1
9	81-82-1	RESISTOR ASSEMBLY, 75 OHM WITH LEADS	1
10	18-270-2	SWITCH, DOUBLE PULL SINGLE THROW ROCKER	1
11	46-705-2	STANDOFF, 3/8 HEX, 8-32 X 1-1/4 INCH	2
12	75-24-2	ROUND HEAD MACHINE SCREW 6-32 X .38 INCH	4
13	38-1215-2	POWER CORD, SPLIT IEC	1
14	38-845-1	CABLE ASSEMBLY, POWER GSP9700	1
15	59-62-2	STRAIN RELIEF, HEYCO #1244	2
16	36-67-1	RECEPTACLE ASSEMBLY, GEN4 BAL	1
17	38-1148-1	CABLE ASSEMBLY, MOTOR CONTROL	1
18	37-628-1	WIRE ASSEMBLY, MOTOR	1
19	37-652-1*	WIRE ASSEMBLY, GEN4 BALANCER POWER SWITCH	1
20	37-633-1*	WIRE ASSEMBLY, BALANCER RELAY TO DRIVE	1
21	76-71-2	NUT-KEPS 8-32	6
22	232-277-1*	ELECTRIC ASSEMBLY-BALANCER, RELAY (Consisting Of:)	1
23	14-1507-1	BRACKET ASSEMBLY, BALANCER RELAY	1
24	18-571-2	RELAY, BALANCER DC DRIVE	2
25	19-282-2	TERMINAL STRIP, 4 COND, 4 POLE	1
26	37-477-1	WIRE ASSEMBLY, 9700 POWER SWITCH (Not Illustrated)	1
27	37-656-1	WIRE ASSEMBLY, BALANCER RELAY POWER SPLIT (Not Illustrated)	1
28	75-171-2	ROUND HEAD MACHINE SCREW 4-40 X 5/16 INCH	6
29	75-32-2	ROUND HEAD MACHINE SCREW 8-32 X 3/8 INCH	2
30	37-655-1	WIRE ASSEMBLY, GEN4 BAL RELAY POWER	1
31	37-657-1	WIRE ASSEMBLY, BALANCER TERMINAL TO FILTER	1
32	75-802-2	SCREW, SELF-TAPPING 10-32 X 3/8 INCH	4
33	69-1409	COVER, ELECTRONICS, LEFT-HAND	1
34	75-682-2	SCREW, SELF-TAPPING 8-32 X 5/16 INCH GREEN	1
35	75-327-2	SCREW, SELF-TAPPING 8-32 X 1/2 INCH	2
36	69-1564	COVER-ELECTRONICS, RIGHT-HAND	1
37	75-24-2	ROUND HEAD MACHINE SCREW 6-32 X .38 INCH	1
38	45-1379-1	PCA, GEN2 DATA ACQUISITION (RFT)	1
OR	45-1379-1-2	PCA, GEN2 DATA ACQUISITION SMWT (SWT) (Not Shown)	1
OR	45-1835-1	PCA-BALANCER DAQ-LOW COST V3 (SWHN) (Not Shown)	1
OR	45-1679-1	PCA-BALANCER DAQ-LOW COST V2 (SWHN) (Replace with Kit 20-3974-1**)	1
39	113-258-2	BUSHING, PUSH ON TRIM	1.25 in

* Wire assemblies 37-652-1 and 37-633-1 have been restructured to be included with electric assembly 232-277-1.

** KIT 20-3974-1 - SWH DAQ BOARD REPLACEMENT contains current DAQ and necessary items for conversion.



VIBRATION STRUCTURE

REFER TO NEXT SHEET FOR PARTS DESCRIPTION LISTING

PARTS DESCRIPTION LISTING

Index No.	Part Number	Description	Qty.
1	105-492-1	HOUSING, SPINDLE W/ LASER & ENCODER (For Auto-Clamp) (Consists Of:)	1
OR	105-542-1	HOUSING, SHAFT W/ LASER & ENC (NOT For Auto-Clamp) (Not Ill.) (Cons. Of:)	1
AND	97-531-2	SHAFT-THREADED, REMOVABLE (export only) (Not Illustrated)	1
2	105-486-1	HOUSING, SPINDLE / DRIVE ASSEMBLY (For Auto-Clamp) (Includes:)	1
OR	105-541-1	HOUSING, SOLID SHAFT (NOT For Auto-Clamp) (Not Illustrated) (Includes:)	1
3	41-221-2**	RETAINER, SPRING COVER (current production, 1 1/8 inch (30 mm) deep)	1
OR	41-134-2**	RETAINER, SPRING COVER (5/8 inch (16 mm) deep, as shown)	1
4	112-112-2	SNAP RING, INTERNAL 115 mm	1
5	98-381-2	SPRING, CONE	1
6	75-73-2	ROUND HEAD MACHINE SCREW 8-32 X .31 INCH	2
7	45-1159-1	BALANCER SPINDLE ENCODER	1
8	75-272-2	SOCKET HEAD CAP SCREW 8-32 X .50 INCH, FULL-THREAD	2
9	105-493-1	HOUSING, LASER	1
10	107-133-2	PULLEY, DRIVEN WITH BALANCE BAND	
	107-118-2 (Obsolete 08-2023)	PULLEY, DRIVEN WITH BALANCE BAND (Obsolete 08-2023)	1
11A	76-470-2	NUT, AUTOCLAMP PULLEY NUT (For Auto-Clamp)	1
11B	77-239-2	WASHER, FLAT 5/8 INCH SPECIAL (NOT For Auto-Clamp)	1
11C	74-365-2	HEX HEAD CAP SCREW M16-2X35 mm GRADE 8.8 (NOT For Auto-Clamp)	1
12	98-416-2	SPRING, BRAKE RELEASE	1
13	106-155-2	SLEEVE, BRAKE ISOLATOR	1
14	164-124-1	LEVER, SPINDLE BRAKE ASSEMBLY	
	164-89-1 (Obsolete 08-2023)	LEVER, SPINDLE BRAKE ASSEMBLY (Obsolete 08-2023)	1
15	177-112-1-005	PIVOT, SPINDLE BRAKE ASSEMBLY	1
16	112-21-2	SNAP RING-#5103-75	1
17	75-177-2	ROUND HEAD MACHINE SCREW 1/4 - 20 X .88 INCH	2
18	77-71-2	WASHER, LOCK 1/4 INCH HELICAL SPRING	2
19	14-1132	BRACKET, FOOTBRAKE SWITCH	1
20	76-61-2	NUT, KEPS 10-32	2
21	75-414-2	PAN HEAD MACHINE SCREW 8-32 X 3/4 INCH	1
22	76-37-2	NUT, HEX 5/16-18	2
23	77-180-2	WASHER, FENDER 5/16 INCH	3
24	77-60-2	WASHER, LOCK 5/16 INCH HELICAL SPRING	1
25	18-454-2	SWITCH, MINI SINGLE-PULL DOUBLE-THROW 2.93 INCH LEVER	1
26	75-75-2	ROUND HEAD MACHINE SCREW 4-40 X 5/8 INCH	2
27	76-366-2	NUT, KEPS 4-40	2
28	38-1026-3	CABLE ASSEMBLY, SPINDLE LOC	1
29	129-232-1	MOTOR, DC, 9700 BALANCER (RFT) (Includes:)	1
OR	129-238-1	MOTOR, 9600 ASSEMBLY (SWT and SWHN) (Includes:) (Not Illustrated)	1
30	55-18-2	CORE, FERRITE (CYLINDRICAL) (Not Illustrated)	1
31	107-116-2	PULLEY, 9722 (RFT)	1
OR	107-112-2	PULLEY, 60 HZ POLY-V (SWT and SWHN)	1
32	75-66-2	SOCKET SET SCREW 1/4-20 X 1/4 INCH CUP POINT	2
33	126-38-2	BELT, POLY-V DRIVE (RFT)	1
OR	126-48-2	BELT, POLY-V DRIVE 330J10 (SWT and SWHN)	1
34	77-66-2	WASHER, FLAT 3/8 TYPE A-W	3
35	74-68-2	HEX HEAD CAP SCREW 3/8-16 X 2.5 INCH	4
36	172-34-2	CAM, BELT TENSIONER	1
37*	FIELD PURCHASE*	ADHESIVE, THREAD LOCKING (LOCKTITE 222)*	A/R
38	46-422-2	SPACER, MOTOR	4
39*	74-522-3*	HEX HEAD CAP SCREW, 3/8-16 X .75 INCH GRADE 5 FULL-THD* (30 FT-LBS)	4
40	76-428-2	NUT, 3/8-16, .615 INCH SQUARE X .25 INCH	4
41*	77-297-2*	WASHER, FLAT 3/8 INCH*	0
42	38-837-1	CABLE ASSEMBLY, SPINDLE ENCODER GSP BALANCER	1
43	63-256-2	ROD, THREADED 3/8-24 X 5.5 INCH (RFT)	2
OR	63-257-2	ROD, THREADED 3/8-24 X 12.63 INCH (SWT W/L VERSION) (Not Shown)	1
44	109-100-1	TRANSDUCER, 500# S-CELL WITH CONNECTIONS (RFT)	1
45	76-485-2	NUT, HEX 3/8-24 GRADE 8 (RFT and SWT W/L VERSION)	6
46	FIELD PURCHASE	ADHESIVE, MEDIUM THREAD LOCKING (LOCKTITE 242)	A/R
47	46-686-005 (Not needed)***	SPACER, BRAKE PIVOT - A	1
48	109-187-1	TRANSDUCER ASSEMBLY, BALANCER FORCE (SWT and RFT)	2
OR	109-182-1	TRANSDUCER ASM-SINGLE PIEZO (SWHN)	2
49	75-239-2	SOCKET HEAD CAP SCREW 1/4-20 X 1.00 INCH (FULL-THREAD)	4
50	77-373-2	WASHER, FLAT 3/8 INCH, GRADE 8	4
51	76-485-2	NUT, HEX 3/8-24, GRADE 8	4
52	77-381-2	WASHER, .26 ID x .49 OD x .035 INCH	2

* Washers (item 41) are not used when using new .75 inch-long HHCS (pre-coated with Loctite) (item 39) to secure spindle.

** Replace in-kind. Current deeper spring cover retainer is not compatible with older spindles.

HUNTER
Engineering Company

11250 HUNTER DRIVE BRIDGETON, MO 63044

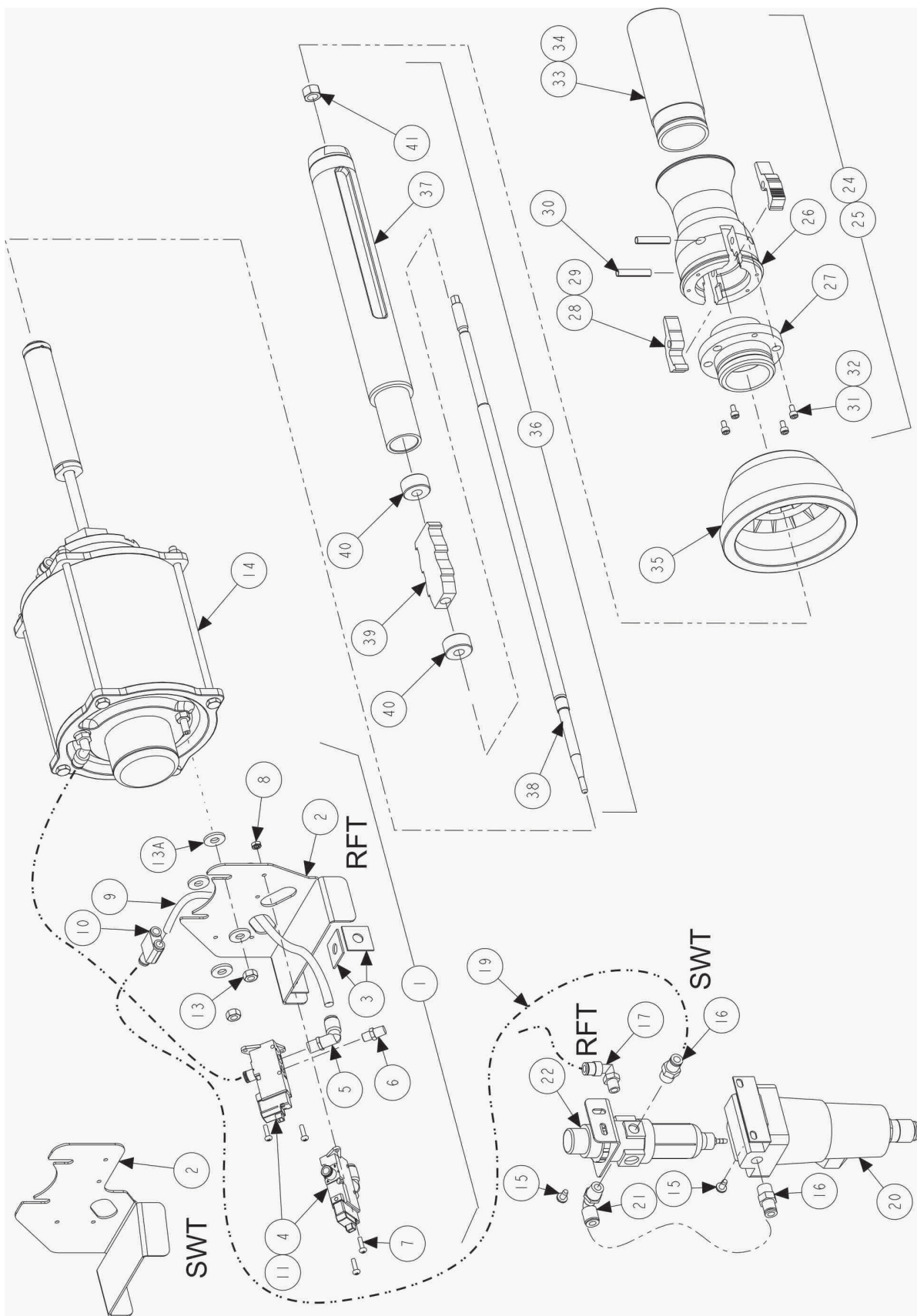
PPP-Paint Code Required
A/R-As Required
REF-Reference

***** 46-686-005 spacer is no longer needed when replacing 177-112-1-005**

SPEEDCLAMP FEATURE

REFER TO NEXT SHEET FOR PARTS DESCRIPTION LISTING

PARTS DESCRIPTION LISTING



PARTS DESCRIPTION LISTING

Index No.	Part Number	Description	Qty.
1	14-1659-1	BRACKET, ASSEMBLY, SPEEDCLAMP RFT VALVE (Consisting Of:)	1
OR	14-1660-1	BRACKET, ASSEMBLY, SPEEDCLAMP SWT VALVE (Consisting Of:)	1
2	14-1640-005	BRACKET, ANTI ROTATE SPEEDCLAMP (RFT)	1
OR	14-1654-005	BRACKET, ANTI-ROTATE, SWT	1
3	49-84-2	GASKET, TC REAR PANEL	4
4	108-198-2	VALVE, PNEUMATIC SOLENOID	2
5	145-358-2	FITTING, 1/8 NPT - 1/4 INCH PTC ELBOW	2
6	145-503-2	FITTING, 1/16 INCH NPT EXHAUST SILENCER	2
7	75-49-2	ROUND HEAD MACHINE SCREW 6-32 X 1/2 INCH	4
8	76-84-2	NUT, KEPS 6-32	4
9	16-843-2	TUBE, 1/4 HOSE, FLEXIBLE	22.5in
10	145-325-2	FITTING, 1/4 INCH Y	1
11	38-1094-3	CABLE, MANIFOLD ASSEMBLY	2
12	94-31-2	TIE-CABLE (BLUE) (Not Illustrated)	3
13	76-368-2	NUT, LOCK 1/4-20 NYLON INSERT	2
13A	77-67-2	WASHER-FLAT 1/4 INCH	4
14	20-3176-1	KIT, RP-SPEEDCLAMP (Cylinder ONLY available as complete RP kit.)	1
15	75-522-2	SCREW, SELF TAPPING 10-32 X .38 INCH	2
16	145-273-2	FITTING, 1/4 INCH HOSE X 1/4 NPT	1
17	145-324-2	FITTING, 1/8 NPT TO 1/4 INCH TUBE, 90	1
18	145-281-2	FITTING, 1/4 INCH HOSE X 1/8 NPT (Not Illustrated)	2
19	16-843-2	TUBE, 1/4 INCH HOSE, FLEXIBLE	33.5 in.
20	136-94-2	FILTER / REGULATOR, GSP AUTOCLAMP	1
21	145-350-2	FITTING, 1/4 TUBE-1/4 INCH NPT 90 ELBOW	1
22	136-78-2	FILTER / REGULATOR, GSP9700 (supplied with roller)	REF.
23	137-96-1	HOSE ASSEMBLY, PNEUMATIC SUPPLY (Not Illustrated)	REF.
24	20-3195-1	KIT, HUB ASSEMBLY, SPEEDCLAMP (Consisting Of:)	1
25	184-106-1	HUB ASSEMBLY, SPEEDCLAMP (Consists Of:)	1
26	184-105-2	HUB, SPEEDCLAMP CUP (Red Finish)	1
27	217-61-2	COLLAR, AUTO-CLAMP CUP	1
28	144-105-2	LINK, PAWL AUTO-CLAMP	2
29	98-422-2	SPRING, TORSION AUTO-CLAMP	2
30	135-121-2	PIN, ROLL 1/4 INCH X 1 1/4 INCH	2
31	75-306-2	SOCKET HEAD CAP SCREW 8-32 X .31 INCH	4
32	Field purchase	LOCTITE # 271 OR PERMA BOND # HM128	A/R
35	175-353-1	ADAPTOR, BALANCER CUP WITH RETAINER	REF
36	97-587-1	SHAFT ASSEMBLY, OUTER 40 mm AUTO-CLAMP (Consists Of:)	1
37	97-586-2	SHAFT, OUTER AUTO-CLAMP	1
38	97-585-2	SHAFT, OUTER WITH HEX	1
39	99-132-2	RATCHET, AUTO-CLAMP	1
40	113-280-2	BUSHING, OUTER SHAFT	2
41	76-458-2	NUT, GRIP 3/8-24	1

NOTE 1: To replace cylinder (item 14) or to upgrade an existing AutoClamp, order RP kit, 20-3176-1. Refer to Form 7076-T.

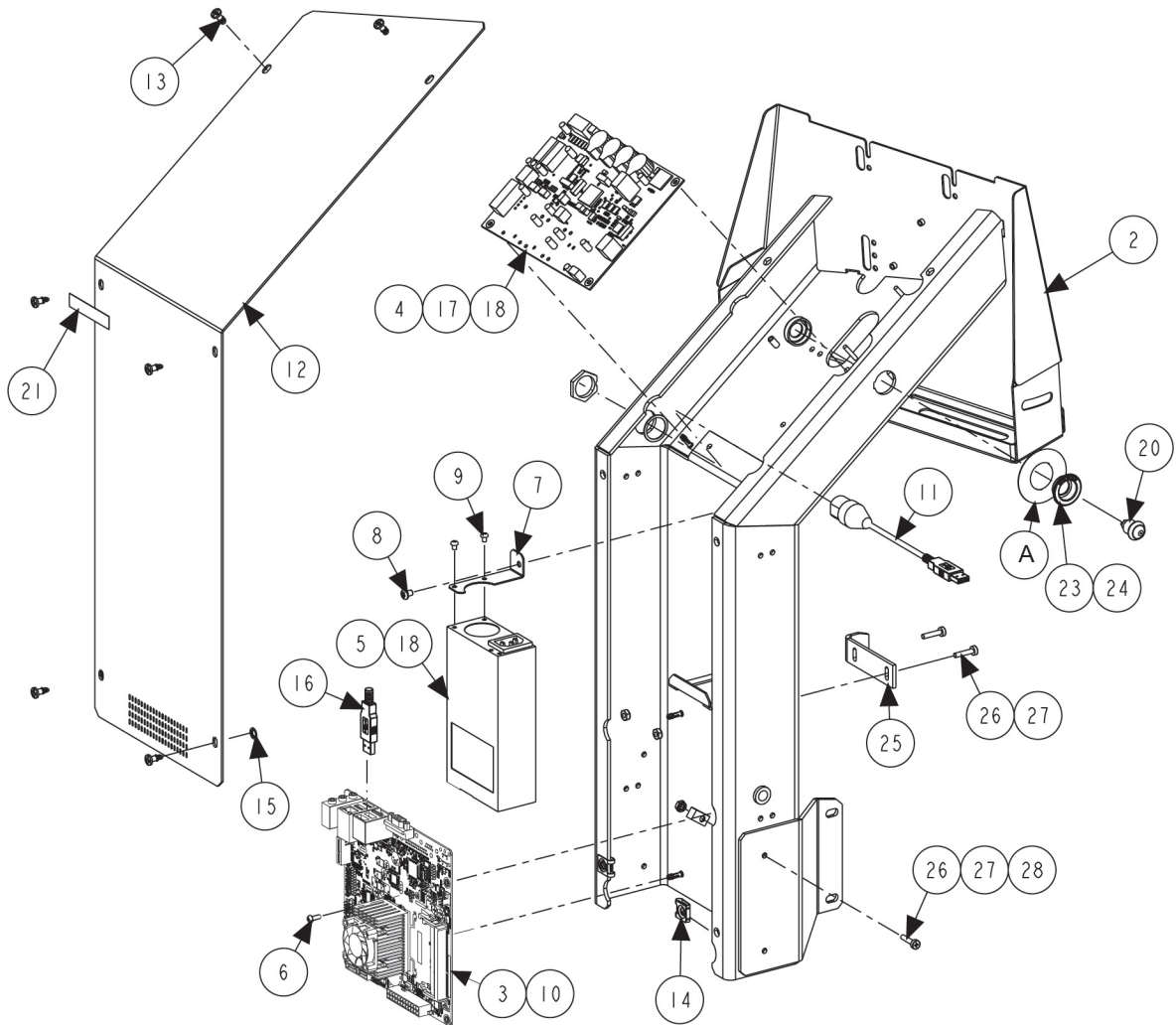
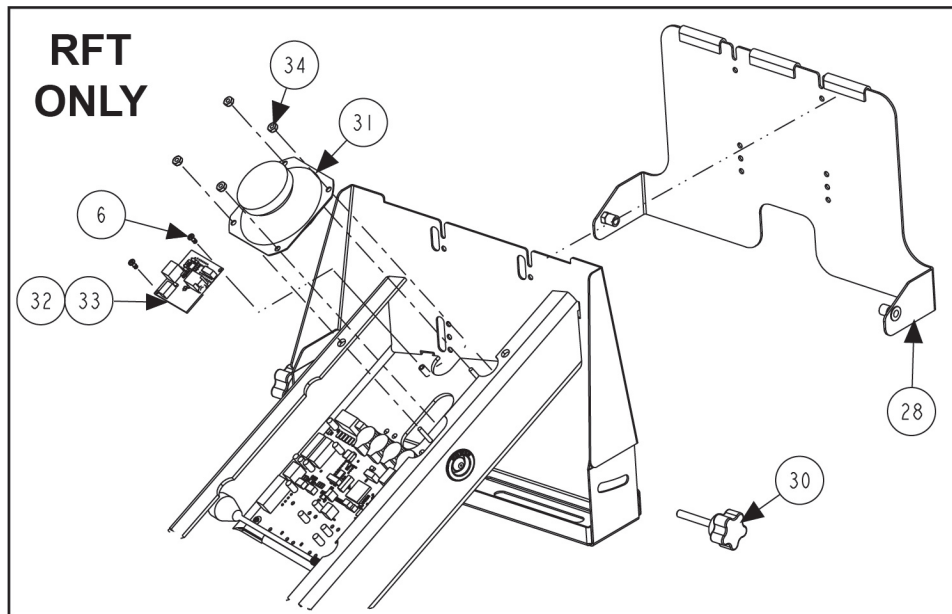
NOTE 2: For AutoClamp components, see previous version of 12-26 parts drawing (02-15c and older)

HUNTER
Engineering Company

11250 HUNTER DRIVE BRIDGETON, MO 63044

PPP-Paint Code Required
A/R-As Required
REF-Reference

PARTS DESCRIPTION LISTING



PARTS DESCRIPTION LISTING

Index No.	Part Number	Description	Qty.
1	11-1901-1-V51****	ASSY-14GA DISP SUPT V51 (14GA SWT) (Consisting Of:)	
OR	11-1788-1*	SUPPORT ASSEMBLY - DISPLAY, SWT (Consisting Of:)	1
OR	11-1787-1*	ASSEMBLY - DISPLAY SUPPORT, RFT (Consisting Of:)	1
2	11-1893-1-005****	SUPPORT ASM-DISPLAY 14GA (14GA SWT)	1
OR	11-1784-1-005	ASSEMBLY - DISPLAY SUPPORT,BALANCER	1
3	45-1785-2	PCB-RH4 MINI-ITX MOTHERBOARD	1
OR	20-2895-1	KIT-RFT/SWT MOBO & CABLE (REF 6738-T)	1
4	45-1337-1-1	PCA - ROCKHOPPER2 USB INTERFACE	1
5	232-373-2	FLEX ATX 150W POWER SUPPLY	1
OR	20-3744-1	KIT-FLEX ATX PWR SUP RETROFIT	1
6	75-24-2	ROUND HEAD MACHINE SCREW 6-32 X .38 INCH	2 / 4
7	14-1307	BRACKET - FLEX ATX	1
8	75-582-2	SOCKET BUTTON HEAD CAP SCREW - 10-32 X .25 INCH	1
9	75-332-2	ROUND HEAD MACHINE SCREW 6-32 X .19 INCH	2
10	46-790-2	STANDOFF - 0.437 INCH HIGH, NYLON	1
11	38-1082-2	CABLE ASSEMBLY USB BULKHEAD	1
12	69-1723-005****	COVER14GA DISPLAY SUPPORT (14GA SWT)	1
OR	69-1372-005	COVER - DISPLAY SUPPORT, TOUCH (Repl cvr will not have vents.)	1
13	75-312-2****	THMS 10-32X1/2 (14 GA SWT)	6
OR	75-775-2	SCREW - QUARTER TURN, SIZE 280	6
14	76-415-2****	NUT-HEX INSERT 10-32 (14GA SWT)	6
OR	76-490-2	NUT - QUARTER TURN, CLIP-ON	6
15	41-205-2	RETAIN - QUARTER -TURN, 82 SERIES	6
16	38-963-2	CABLE - USB 2.0 A/B 1METER	1
17	38-1160-3	CABLE ASSEMBLY - GSP INTERCONNECT	1
18	37-623-1	WIRE ASSEMBLY - GEN4 BALANCER DC POWER 38 INCH	1
19	94-45-2	TIE-CABLE (BLK)	2
20	18-565-2	SWITCH ASSEMBLY - BALANCER MOTHERBOARD POWER	1
21	128-1399-2	DECAL - DISPLAY COVER GEN IV	1
22	BLD-DRIVES	PROGRAM AND DATA FLASH DRIVES (Not Illustrated)	1
23	105-639-2	HOUSING - POWER BUTTON, OUTER	1
24	105-646-2	HOUSING - PWR BUTTON TC	1
OR	105-640-2	HOUSING - POWER BUTTON, INNER	1
A	128-1817-2	DECAL - BALANCER POWER OFF	1
25	216-118-005****	HOOK - WEIGHT TRAY (removed in 2021)	1
26	75-414-2	PAN HEAD MACHINE SCREW 8-32 X .75 INCH	3
27	76-71-2	NUT - KEPS 8-32	3
28	12-145-2	CLAMP - CABLE 1/4 INCH DIAMETER	1
29	171-349-1	ASSEMBLY - PANEL, DISPLAY MOUNT, TILTABLE (RFT Only)	1
30	34-208-2	KNOB - 1/4-20 X 1/2 INCH (RFT Only)	2
31	109-173-1	SPEAKER ASSEMBLY - 3.5 INCH W CABLE (RFT Only)	1
32	45-1695-1	PCA - MONO AUDIO AMP G3 (RFT Only)	1
33	37-651-1	WIRE ASSEMBLY - AUDIO AMP POWER (RFT Only)	1
B	38-768-2	CABLE-STEREO JUMPER (RFT Only)	1
34	76-84-2	NUT - KEPS 6-32 (RFT Only)	4
35	75-825-2**	HEX WASHER HEAD MACHINE SCREW 1/4-20 X 5/8 INCH (Not Illus.)	4
36	76-414-2**	NUT-HEX INSERT 1/4-20 (Not Illustrated)	4
37	227-109-2***	DISPLAY, 22 INCH LCD WITH RESISTIVE TOUCH (Not Illustrated)	1
OR	227-105-2	DISPLAY, 22 INCH LCD WITH TOUCH (Not Illustrated)	1
38	75-668-2	PAN HEAD MACHINE SCREW M4 X .7 X 10 mm (Not Illustrated)	2

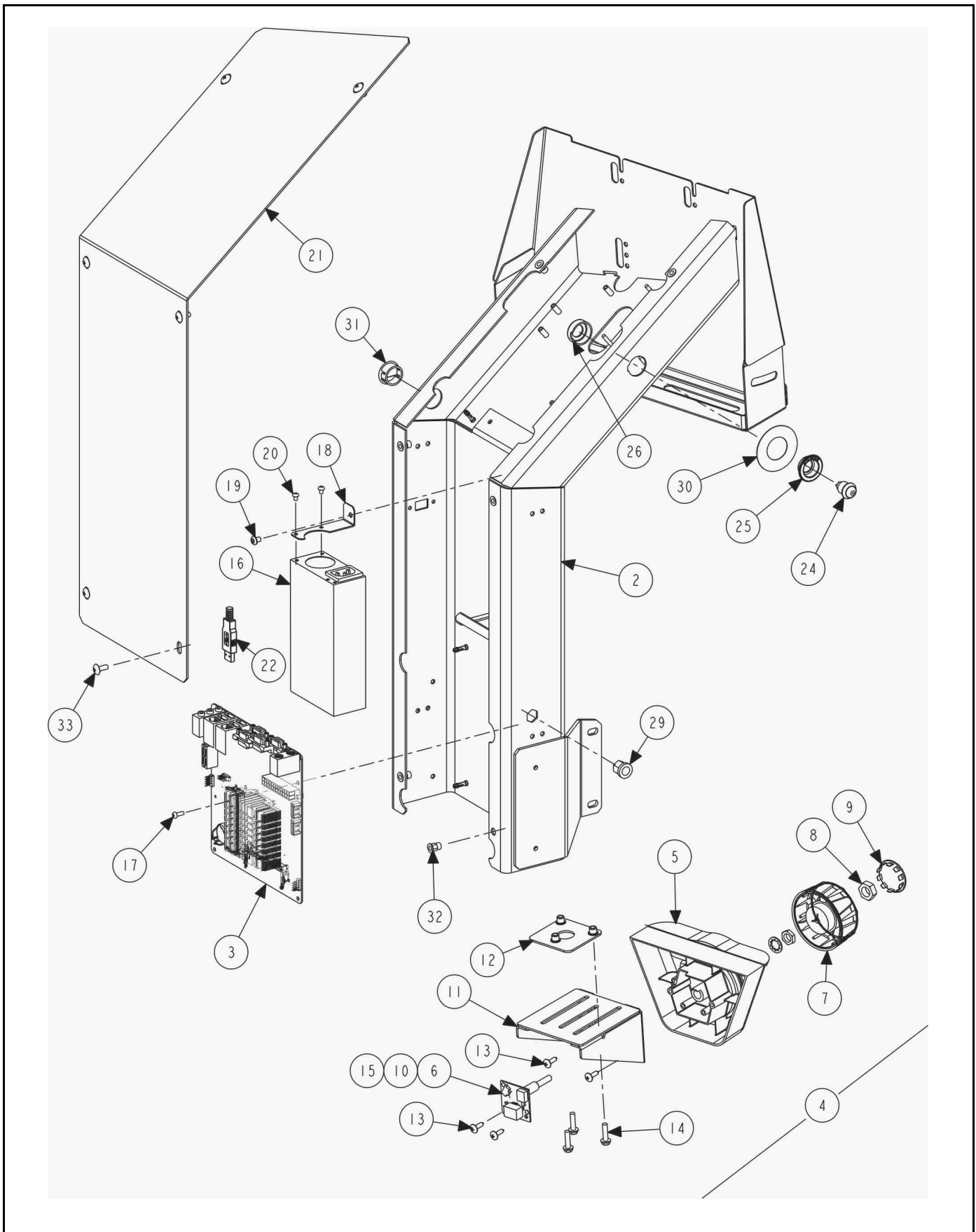
* See previous 09-18a version of balancer parts drawing for previous display support with piano-style hinge.

** Hardware to attach support to tub. (Not Illustrated)

*** Resistive touch monitors ship standard as of June 2017; require software version 3.0.1.488 or later.

**** Newer 14 gage design is better shown on following sheet. Monitor support changed to this 14 gage design in 2021. Along with metal thickness change, the weight tray hook was removed. Quarter-turn back cover closures were replaced with screws.

PARTS DESCRIPTION LISTING

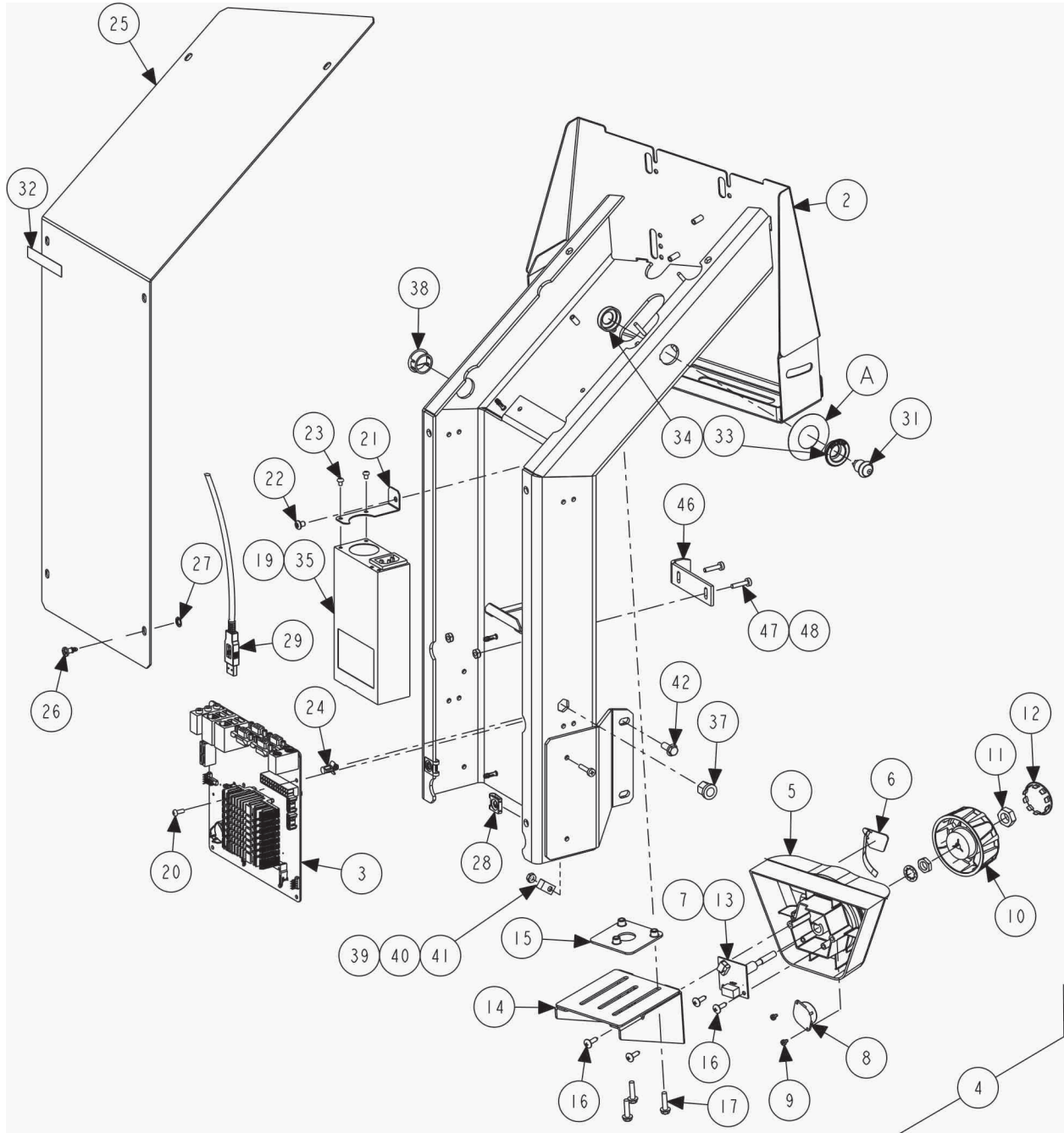


PARTS DESCRIPTION LISTING

Index No.	Part Number	Description	Qty.
1	11-1892-1*	ASSEMBLY-14 GA DISPLAY SUPPORT SWP	1
2	11-1893-1-005	SUPPORT ASSEMBLY-DISPLAY 14 GA	1
3	45-1657-2	PCB-RH4 MOTHERBOARD	1
4	146-73-1	CONTROLLER-MONITOR SELECT	1
5	105-791-2	BEZEL - MONITOR KNOB	1
6	45-1743-1-1	PCA-BALANCER USER INTERFACE G2	1
7	34-233-3	KNOB-DISPLAY-WITH OVERMOLD	1
8	76-315-2	NUT-JAM 7/16-20	1
9	43-179-2	PLUG-HOLE, 1.25 INCH ID - STEEL	1
10	38-1319-1	CABLE ASSEMBLY-LCB USER INTERFACE	1
11	14-1707-005	BRACKET - KNOB, ADJUSTABLE	1
12	51-3095-1	PLATE ASSEMBLY, NUT SFB MONITOR BRACKET	1
13	75-828-2	TRUSS HEAD SHEET METAL SCREW-#8 X .63 INCH DRILL POINT	4
14	75-912-2	HEX WASHER HEAD MACHINE SCREW 10-32 X .75 INCH FULL-THREAD	3
15	38-1325-1	CABLE-GROUND, UI ENCODER	1
16	232-373-2	FLEX ATX 150 WATT POWER SUPPLY	1
17	75-24-2	ROUND HEAD MACHINE SCREW 6-32 X .38 INCH	1
18	14-1307	BRACKET- FLEX ATX	1
19	75-582-2	SOCKET BUTTON HEAD CAP SCREW -10-32 X .25 INCH	1
20	75-332-2	ROUND HEAD MACHINE SCREW 6-32X.19 INCH	2
21	69-1723-005	COVER14 GA DISPLAY SUPPORT	1
22	38-963-2	CABLE-USB 2.0 A/B 1 METER	1
23	94-45-2	TIE-CABLE (BLK)	2
24	18-565-2	SWITCH ASSEMBLY-BAL MOTHER BOARD POWER	1
25	105-639-2	HOUSING-POWER BUTTON, OUTER	1
26	105-646-2	HOUSING - POWER BUTTON TC	1
27	37-819-1	WIRE ASSEMBLY-DAQ TO POWER, MICROFIT (for use with DAQ 45-1835-1)	1
or	37-704-1	WIRE ASSEMBLY-DAQ TO POWER, 4 PIN EXT (for use with DAQ 45-1679-1)	1
28	DRIVES	PACKAGED FLASH DRIVES (Not Illustrated)	1
29	76-296-2	NUT-INSERT 3/8-16 HEX	1
30	128-1817-2	DECAL - BALANCER POWER OFF	1
31	43-111-2	PLUG-7/8 INCH DIAMETER HOLE	1
32	76-415-2	NUT-HEX INSERT 10-32	6
33	75-312-2	THRUSS HEAD MACHINE SCREW 10-32X1/2 INCH	6
34	75-825-2*	HEX WASHER HEAD MACHINE SCREW 1/4-20 X 5/8 INCH (Not Illustrated)	4
35	76-414-2*	NUT, HEX INSERT 1/4-20 (Not Illustrated)	4
36	227-106-2	DISPLAY, 22 INCH CLASS LCD (Not Illustrated)	1
37	75-668-2	PAN HEAD MACHINE SCREW M4 X .7 X 10 mm (Not Illustrated)	2

* Monitor support changed to this 14 gage design in 2021. Along with metal thickness change, the weight tray hook, and button in upper right-hand corner of selection controller were removed. Quarter-turn back cover closures were replaced with screws.

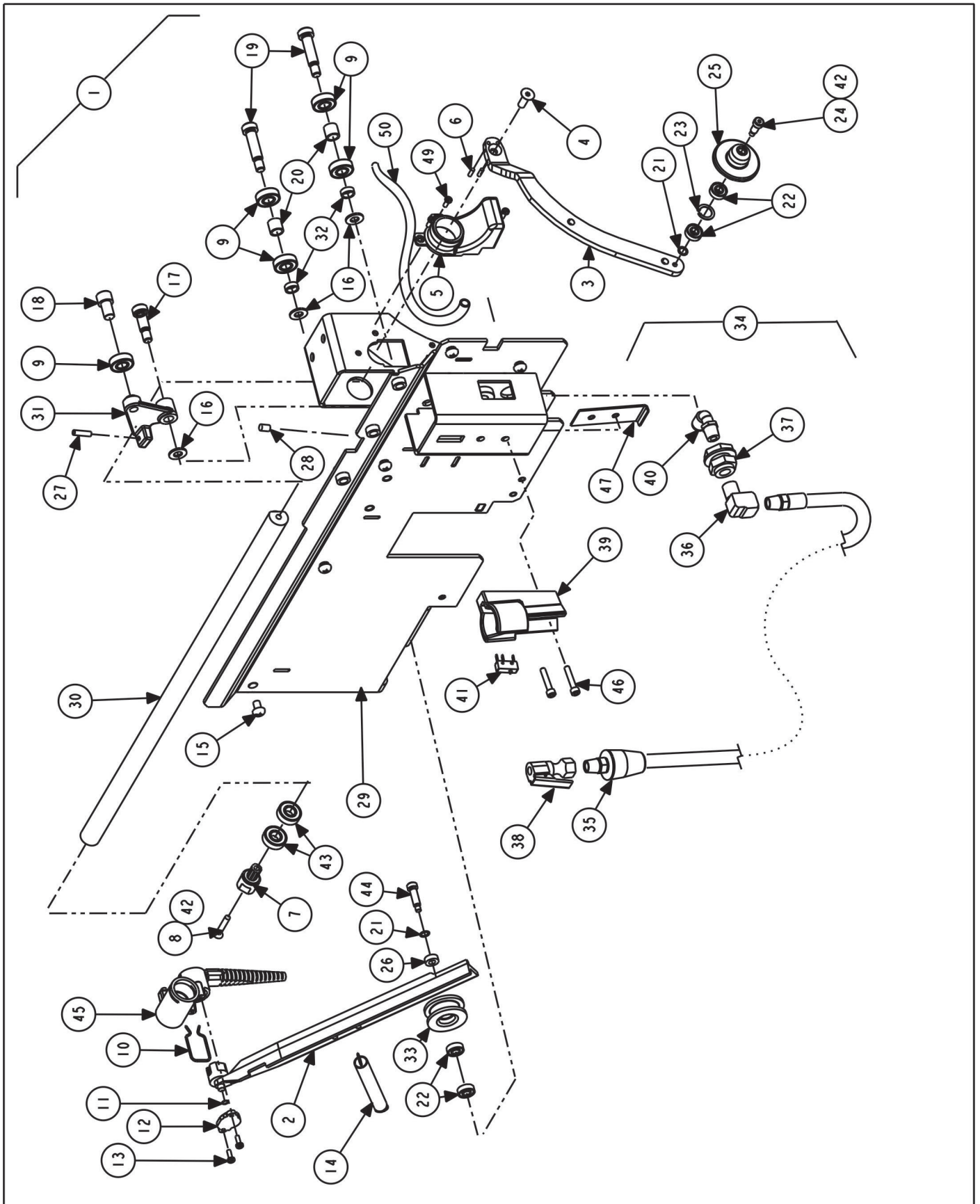
PARTS DESCRIPTION LISTING



PARTS DESCRIPTION LISTING

Index No.	Part Number	Description	Qty.
1	11-1747-1*	ASSEMBLY DISPLAY SUPPORT SWP (Consisting Of:)	1
2	11-1784-1-005	ASSEMBLY, DISPLAY SUPPORT,BALANCER	1
3	45-1657-2	PCB, RH4 MOTHERBOARD	1
4	146-63-1	CONTROLLER, MONITOR SELECTION	1
5	105-708-2	HOUSING, DISPLAY KNOB	1
6	18-611-2	SWITCH, OVERLAY, MONITOR - SFB	1
7	45-1639-1	PCA, BALANCER USER INTERFACE	1
8	70-161-1	HARNESS, BEEPER, SWP	1
9	75-712-2	SCREW, SELF-TAPPING #4 X .19 INCH	2
10	34-233-3	KNOB, DISPLAY-WITH OVERMOLD	1
11	76-315-2	NUT, JAM 7/16-20	1
12	43-179-2	PLUG, HOLE, 1.25 INCH INSIDE DIAMETER - STEEL	1
13	38-1319-1	CABLE ASSEMBLY, LCB USER INTERFACE	1
14	14-1707-005	BRACKET-KNOB, ADJUST	1
15	51-3095-1	PLATE ASSEMBLY, NUT SFB MONITOR BRACKET	1
16	75-828-2	TRUSS HEAD SHEET METAL SCREW-#8 X .63 INCH DRILL POINT	4
17	75-912-2	HEX WASHER HEAD MACHINE SCREW 10-32 X .75 INCH FULL-THREAD	3
18	38-1325-1	CABLE, GROUND, UI ENCODER (Not Illustrated)	1
19	232-253-2	FLEX ATX 150W POWER SUPPLY	1
20	75-24-2	ROUND HEAD MACHINE SCREW 6-32 X .38 INCH	1
21	14-1307	BRACKET, FLEX ATX	1
22	75-582-2	SOCKET BUTTON HEAD CAP SCREW -10-32 X .25 INCH	1
23	75-332-2	ROUND HEAD MACHINE SCREW 6-32 X .19 INCH	2
24	46-790-2	STANDOFF, 0.437 INCH HIGH, NYLON	1
25	69-1372-005	COVER, DISPLAY SUPPORT, TOUCH	1
26	75-775-2	SCREW, QUARTER TURN, SIZE 280	6
27	76-490-2	NUT, QUARTER TURN, CLIP-ON	6
28	41-205-2	RETAINER, QUARTER TURN, 82 SERIES	6
29	38-963-2	CABLE, USB 2.0 A/B 1 METER	1
30	94-45-2	TIE-CABLE (BLACK) (Not Illustrated)	2
31	18-565-2	SWITCH ASSEMBLY, BALANCER MOTHER BOARD POWER	1
32	128-1399-2	DECAL, DISPLAY COVER GEN IV	1
33	105-639-2	HOUSING, POWER BUTTON, OUTER	1
34	105-640-2	HOUSING, POWER BUTTON, INNER	1
A	128-1817-2	DECAL - BALANCER POWER OFF	1
35	37-819-1	WIRE ASSEMBLY-DAQ TO POWER, MICROFIT (for use with DAQ 45-1835-1)	1
or	37-704-1	WIRE ASSEMBLY-DAQ TO POWER, 4 PIN EXT (for use with DAQ 45-1679-1)	1
36	DRIVES	PROGRAM AND DATA FLASH DRIVES (Not Illustrated)	1
37	76-296-2	NUT, INSERT 3/8-16 HEX	1
38	43-111-2	PLUG, 7/8 INCH DIAMETER HOLE	1
39	75-414-2	PAN HEAD MACHINE SCREW 8-32 X .75 INCH	1
40	76-71-2	NUT - KEPS 8-32	1
41	12-145-2	CLAMP - CABLE 1/4 INCH DIAMETER	1
42	75-825-2	HEX WASHER HEAD MACHINE SCREW 1/4-20 X 5/8 INCH	4
43	76-414-2*	NUT, HEX INSERT 1/4-20 (Not Illustrated)	4
44	227-106-2	DISPLAY, 22 INCH CLASS LCD (Not Illustrated)	1
45	75-668-2	PAN HEAD MACHINE SCREW M4 X .7 X 10 mm (Not Illustrated)	2
46	216-118-005	HOOK, WEIGHT TRAY	1
47	75-414-2	PAN HEAD MACHINE SCREW 8-32 X .75 INCH	2
48	76-71-2	NUT, KEPS 8-32	2

PARTS DESCRIPTION LISTING

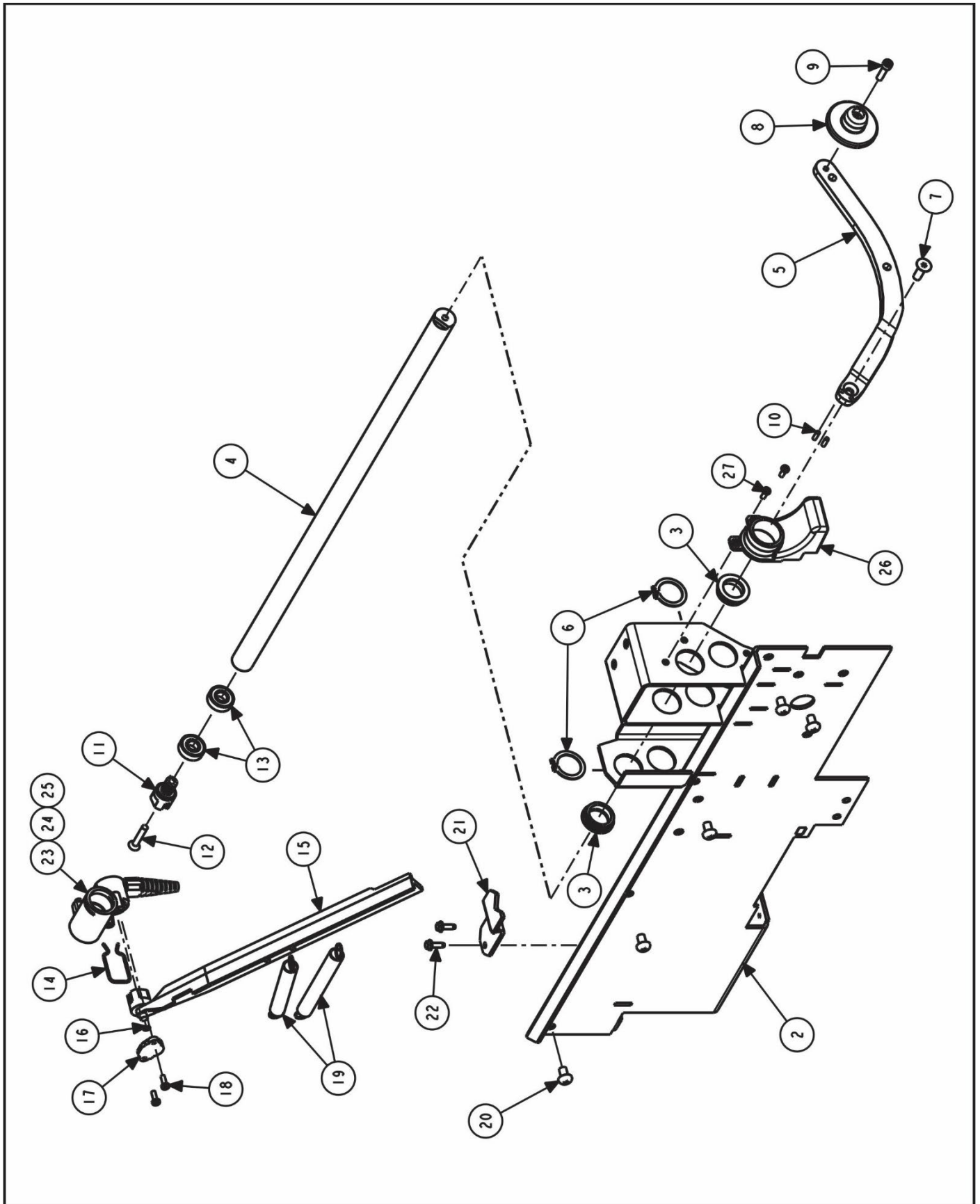


PARTS DESCRIPTION LISTING

Index No.	Part Number	Description	Qty.
1	103-266-1	ARM ASSEMBLY, INNER DATASET RFT (Consists Of:)	1
2	176-52-1	LOCATOR ASSEMBLY, MAGNET	1
3	103-146-2	ARM, INNER DATASET	1
4	75-68-3	FLAT HEAD SOCKET CAP SCREW 1/4-20X.75 INCH	1
5	228-80-2	STOP, INNER DATASET ARM	1
6	135-406-2	PIN-ROLL 1/8 X 3/8 INCH	2
7	176-50-1	LOCATOR ASSEMBLY, MAGNET	1
8	75-667-3	SCREW, FLAT HEAD MACHINE SCREW 10-32 X 1.125 INCH	1
9	130-136-2	BEARING, BALL, 3/8 INNER DIAMETER X 7/8 INCH OUTER DIAMETER	5
10	98-415-2	SPRING, DATASET CLIP	1
11	77-323-2	WAS HER-WAVE SPRING .242 X .194 INCH	1
12	53-153-2	CAP, INNER DATASET	1
13	75-359-2	PAN HEAD SHEET METAL SCREW 6 X 3/8 INCH TRILOBULAR	2
14	98-331-2	SPRING, EXTENSION .500 INCH OUTER DIAMETER	1
15	75-90-3	ROUND HEAD MACHINE SCREW 1/4-20 X 3/8 INCH	6
16	77-331-2	WASHER, .318 INNER DIAMETER X .73 OUTER DIAMETER X .057 INCH THK	3
17	74-456-2	BOLT, SHOULDER 3/8 X 3/4 INCH	1
18	74-220-3	SOCKET HEAD CAP SCREW 3/8-16 X .63 INCH (Full-Thread)	1
19	74-366-2	BOLT, SHOULDER 3/8 X 1.25 INCH, GRADE 5	2
20	46-429-2	SPACER, ROLLER	2
21	77-140-2	WASHER, SPRING 1/4 INCH WAVE	2
22	130-142-2	BEARING, BALL 1/4 INNER DIAMETER X 5/8 INCH OUTER DIAMETER	4
23	112-86-2	SNAP RING, TRUARC 5008-62 ZD	1
24	75-633-3	SCREW, SHOULDER 1/4 X .439 INCH	1
25	111-102-2	ROLLER, INNER DATASET	1
26	46-583-2	SPACER, 1/4 INNER DIAMETER X 1/2 OUTER DIAMETER X 3/16 INCH LONG	1
27	75-601-2	SOCKET SET SCREW 10-24 X .75 INCH, OVAL POINT LOCK	1
28	98-333-2	SPRING, COMPRESSION .240 INCH OUTER DIAMETER	1
29	11-1636-1-005	SUPPORT ASSEMBLY, INNER DATASET	1
30	97-540-2	SHAFT, INNER DATASET GSP9722	1
31	57-767-005	BAR, UPPER ROLLER	1
32	46-582-2	SPACER, .375 INNER DIAMETER X .173 INCH	2
33	111-123-2	ROLLER, LATERAL V	1
34	105-728-1*	HOUSING ASSEMBLY, BALANCER TIRE FILL (Consists Of:)	1
35	137-156-1*	HOSE ASSEMBLY-BALANCER TIRE FILL 60 INCH (Includes)	1
36	145-241-2	FITTING-1/4 BRASS STREET ELBOW	1
37	145-224-2	COUPLING-BULKHEAD	1
38	145-341-2	FITTING, AIR CHUCK LOCK-ON OPEN	1
39	105-721-1*	ASSEMBLY - INFLATION STATION	1
40	145-350-2	FITTING-1/4 TUBE-1/4 NPT 90 ELBOW	1
41	18-350-2	SWITCH-SUBMINIATURE LIMIT (included with holster (item 39))	REF
and	37-481-1	WIRE ASSEMBLY-GSP9700 TIRE FILL	1
42	Field Purchase	ADHESIVE, THREAD LOCKING (Loctite #222 or PermaBond #LM113)	A/R
43	130-195-2	BEARING, BALL 3/8 INNER DIAMETER X 7/8 INCH OUTER DIAMETER	2
44	75-675-2	SCREW, SHOULDER 1/4 X 3/4 INCH	1
45	125-445-3	SENSOR ASSEMBLY, INNER DATASET	1
46	75-436-2	SOCKET HEAD CAP SCREW 10-32 X 1 INCH	2
47	14-1514-1	BRACKET ASSEMBLY, INFLATION MOUNT	1
48	15-36-2	TUBING, SPIRAL WRAP (Not Illustrated)	A/R
49	75-769-2	SOCKET BUTTON HEAD CAP SCREW 6-32 X 3/8 INCH	3
50	16-423-2	TUBE, AIR .172 INNER DIAMETER	20 IN.

* . Listed replacements (34. 35. 39) are not shown. If replacing older hose with new (35), then holster (39) will also need replaced.

PARTS DESCRIPTION LISTING

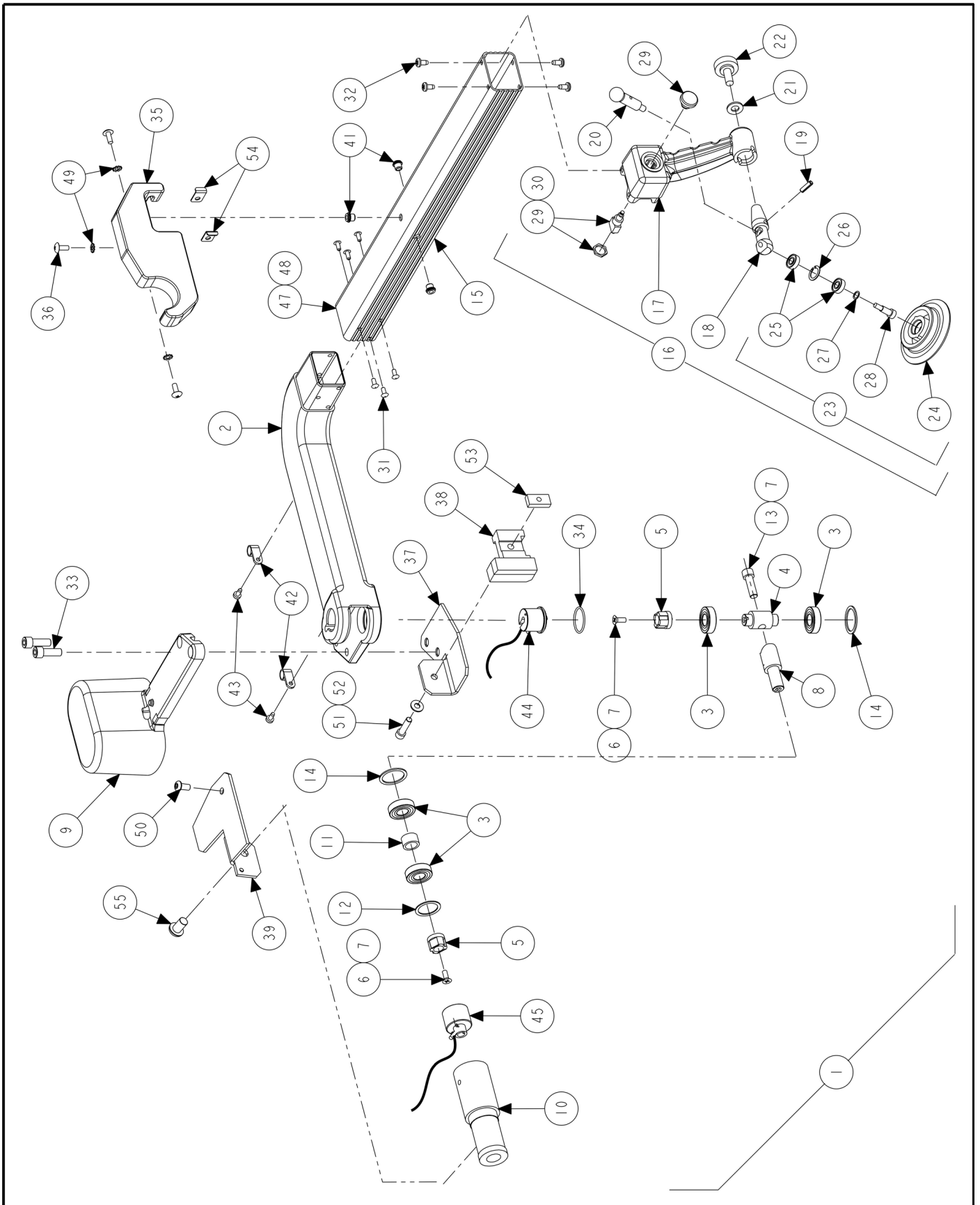


PARTS DESCRIPTION LISTING

Index No.	Part Number	Description	Qty.
1	103-270-1*	ARM ASSEMBLY, SWT INNER DATASET (Consisting Of:)	1
2	11-1645-1-005*	SUPPORT ASSEMBLY, SWT INNER DATASET	1
3	130-184-2	BEARING-INNER DATASET	2
4	97-525-2	SHAFT, INNER DATASET	1
5	103-146-2	ARM, INNER DATASET	1
6	112-88-2	SNAP RING-TRUARC 5100-100	2
7	75-68-3	FLAT HEAD SOCKET CAP SCREW 1/4-20 X .75 INCH	1
8	111-101-2	ROLLER, INNER ARM DATASET	1
9	75-83-3	SOCKET HEAD CAP SCREW 10-32 X .75 INCH (Full-threaded)	1
10	135-406-2	PIN, ROLL 1/8 X 3/8	2
11	176-50-1	LOCATOR ASSEMBLY, MAGNET	1
12	75-667-3	SCREW-FLAT HEAD MACHINE SCREW 10-32 X 1.125 INCH	1
13	130-195-2	BEARING, BALL 3/8 ID X 7/8 INCH OD	2
14	98-415-2	SPRING, DATASET CLIP	1
15	176-52-1	LOCATOR ASSEMBLY, MAGNET	1
16	77-323-2	WASHER, WAVE SPRING .242 X .194 INCH	1
17	53-153-2	CAP, INNER DATASET	1
18	75-359-2	PAN HEAD SHEET METAL SCREW 6 X 3/8 INCH TRILOBULAR	2
19	98-331-2	SPRING, EXTENSION .500 INCH OD	2
20	75-90-3	ROUND HEAD MACHINE SCREW 1/4-20 X 3/8 INCH	6
21	177-97-005	BRACKET, SMALL WHEEL SPEEDCLAMP	1
22	75-327-2	SCREW, SELF-TAPPING 8-32 X 1/2 INCH	2
23	125-445-3	SENSOR ASSEMBLY, INNER DATASET	1
24	94-11-2	TIE, CABLE	2
25	15-36-2	TUBING, SPIRAL WRAP	A/R
26	228-80-2	STOP, INNER DATASET ARM	1
27	75-446-2	SCREW SELF-TAPPING 8-32 X .38 INCH	3

* Previous inner dataset, 103-247-1, is identical to current, except for two slots in the support that is only used when integrated wheel lift is present.

PARTS DESCRIPTION LISTING



PARTS DESCRIPTION LISTING

Index No.	Part Number	Description	Qty.
1	103-153-1	ARM, OUTER DATASET ASSEMBLY (Consisting Of:)	1
2	105-475-011	HOUSING, DATASET ARM	1
3	130-172-2	BEARING, SEALED BALL	4
4	97-574-2 *	SHAFT, OUTER LATERAL (for 5/16 inch screw)	1
5	176-49-1	LOCATOR ASSEMBLY, MAGNET	2
6	75-508-3	FLAT HEAD MACHINE SCREW 10-32 X .50 INCH	2
7	Field Purchase	ADHESIVE, THREAD LOCKING LOCTITE #222 OR PERMABOND #LM113	A/R
8	97-573-2 *	SHAFT, RADIAL (for 5/16 inch screw)	1
9	65-70-005	WEIGHT, DATASET COUNTER BALANCE	1
10	105-479-2	HOUSING, OUTER RADIAL BEARING	1
11	46-573-2	SPACER, OUTER DATASET	1
12	77-324-2	WASHER, WAVE SPRING 1.102 X .85 INCH	1
13	75-705-3 *	SOCKET HEAD CAP SCREW 5/16-18 X 1.00 INCH (Full-Thread)	1
14	112-124-2	SNAP RING, INTERNAL 1.125 INCH	2
15	103-152-011	ARM, OUTER DATASET	1
16	111-126-1	ROLLER / HANDLE ASSEMBLY, DATASET (Consisting Of:)	1
17	142-136-011	HANDLE, DATASET ARM	1
18	97-381-2	SHAFT, ROLLER/PIVOT	1
19	135-227-2	PIN, ROLL 3/16 X 5/8 INCH	1
20	104-105-2	GUIDE, RIM RUNOUT GAGE	1
21	77-20-2	WASHER, FLAT 5/16 INCH	1
22	34-129-2	KNOB, WITH 5/16 INCH SOCKET HEAD CAP SCREW	1
23	111-69-1	ROLLER ASSEMBLY, DATA SET (Consisting Of:)	1
24	111-68-2	ROLLER, OUTER DATASET	1
25	130-142-2	BEARING, BALL 1/4 INNER DIAMETER X 5/8 INCH OUTER DIAMETER	2
26	112-86-2	SNAP RING, TRUARC 5008-62 ZD	1
27	77-140-2	WASHER, SPRING 1/4 INCH WAVE	1
28	75-521-2	SCREW, SHOULDER 1/4 X .50 INCH	1
29	18-510-1	SWITCH ASSEMBLY, OUTER DATASET ARM	1
30	Field Purchase	ADHESIVE, LOCTITE #242 OR PERMABOND #MM115	A/R
31	75-953-2	PAN HEAD MACHINE SCREW 10-16 X 1/2 INCH SELFDRIVE	6
OR	48-57-2	RIVET, BLIND 5/32 X 1/4 INCH	6
32	75-522-2	SCREW, SELF-TAPPING 10-32 X .38 INCH	4
33	74-376-2	SOCKET HEAD CAP SCREW, 5/16-18 X 7/8 INCH	2
34	124-117-2	O-RING .989 INNER DIAMETER X .070 INCH CS BUNA-N	1
35	228-72-2	STOP, OUTER DATASET	1
36	75-312-2	TRUSS HEAD MACHINE SCREW 10-32 X 1/2 INCH	3
37	11-1363-1-005	SUPPORT ASSEMBLY, OUTER DATASET STOP	1
38	121-269-2	BLOCK, PIVOT STOP	1
39	228-79-005	STOP, DATASET PIVOT	1
40	94-11-2	TIE-CABLE (Not Illus.)	3
41	76-352-2	INSERT THREADED #10-32 STEEL	3
42	12-181-2	CLAMP, CABLE 3/8 INCH BLACK NYLON	2
43	75-474-2	SCREW, SELF-TAPPING 8-32 X .38 INCH	2
44	125-415-3	SENSOR, OUTER DATASET HD LATERAL	1
45	125-394-3	SENSOR, HALL OUTER DATASET RADIAL	1
46	70-143-2	HARNES, SPIRAL WRAP .25 INCH OD BLACK (Not Illus.)	8 IN.
47	Field Purchase	ADHESIVE, LOCTITE DEPEND 330 NO-MIX LOC	A/R
48	Field Purchase	ADHESIVE, LOCTITE DEPEND 330 ACTIVATOR	A/R
49	77-351-2	WASHER, #10 EXTERNAL TOOTH WASHER	3
50	75-481-2	SOCKET BUTTON HEAD CAP SCREW 1/4-20 X .50 INCH	1
51	75-239-2	SOCKET HEAD CAP SCREW 1/4-20 X 1.00 INCH	1
52	77-67-2	WASHER, FLAT 1/4 INCH	1
53	76-480-2	NUT 1/4-20 PIVOT RETAINER	1
54	41-198-2	RETAINER, OUTER DATASET STOP	2
55	74-411-2	SOCKET BUTTON HEAD CAP SCREW 3/8-16 X .63 INCH	1

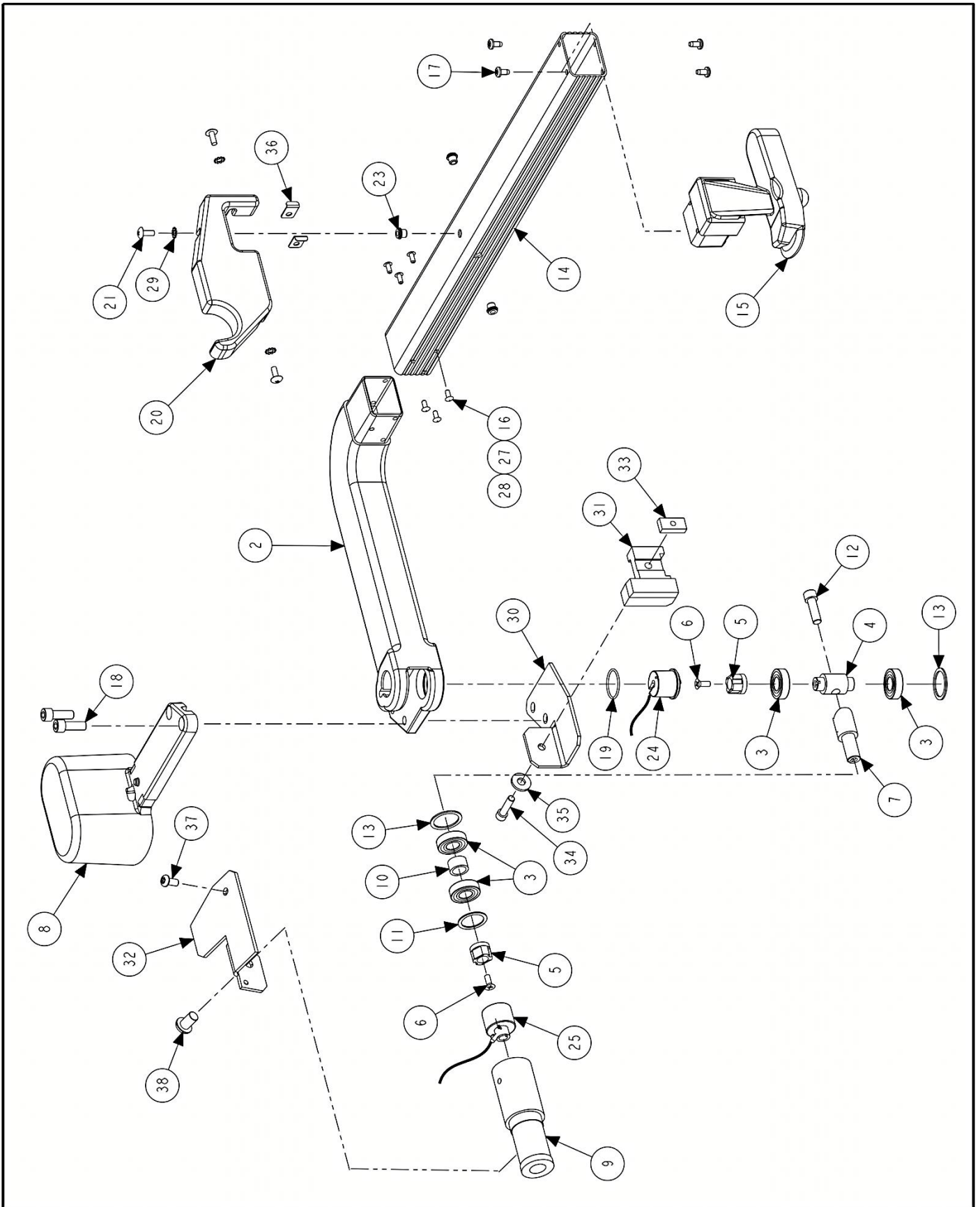
* NOTE: Identified items are also contained in Outer Dataset Shaft Kit 20-2294-1 used to upgrade to 5/16 inch screw (item 13).

HUNTER
Engineering Company

11250 HUNTER DRIVE BRIDGETON, MO 63044

PPP-Paint Code Required
A/R-As Required
REF-Reference

PARTS DESCRIPTION LISTING

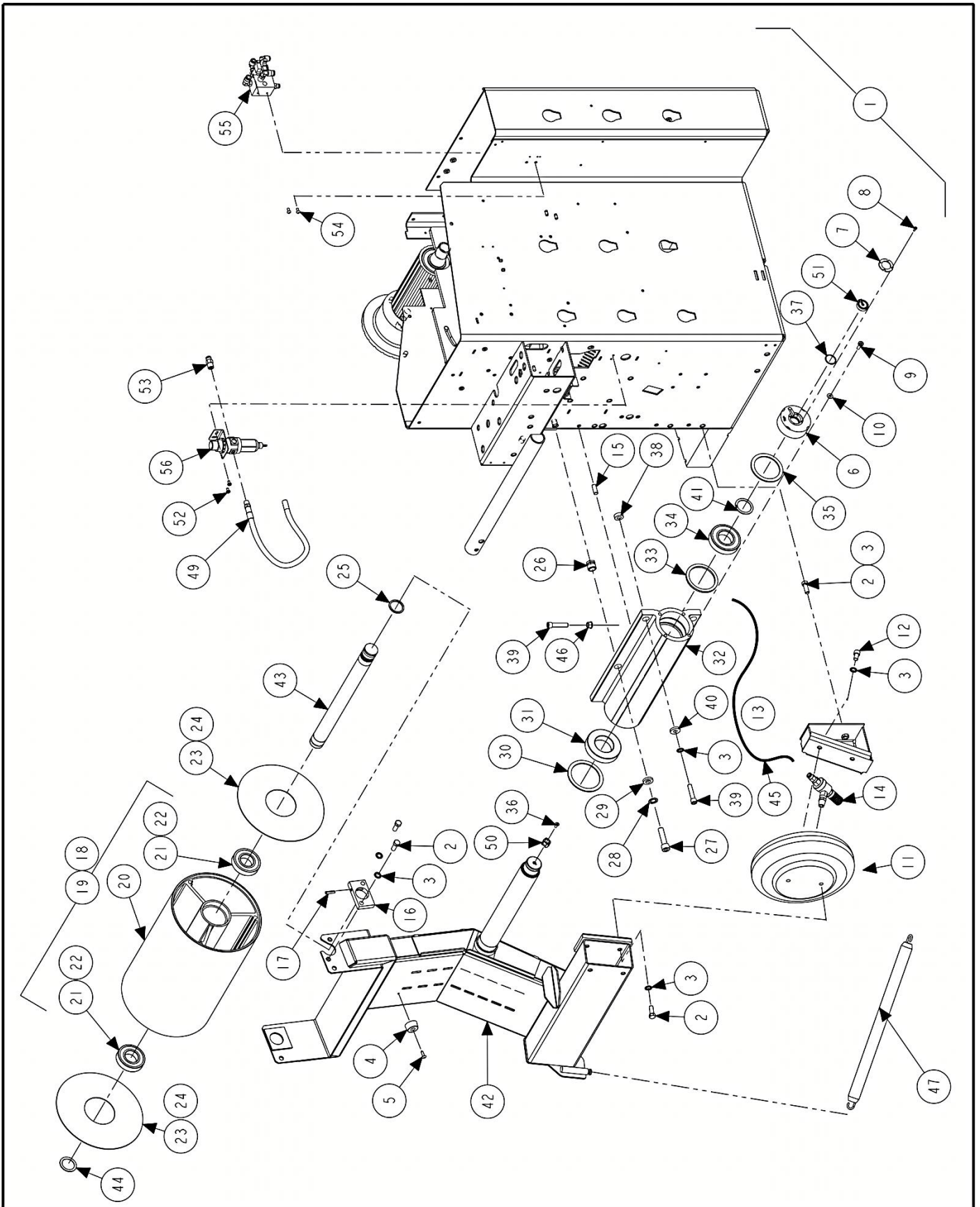


PARTS DESCRIPTION LISTING

Index No.	Part Number	Description	Qty.
1	103-180-1	OUTER ARM 9600 (Consists Of:)	1
OR	103-303-1	ARM, OUTER DATASET. SWH (Consists Of:)	1
2	105-475-011	HOUSING, DATASET ARM	1
3	130-172-2	BEARING, SEALED BALL	4
4	97-574-2 *	SHAFT, OUTER LATERAL	1
5	176-49-1	LOCATOR ASSEMBLY, MAGNET	2
6	75-508-3	FLAT HEAD MACHINE SCREW 10-32 X .50 INCH	2
7	97-573-2 *	SHAFT, RADIAL	1
8	65-70-005	WEIGHT, DATASET COUNTERBALANCE	1
9	105-479-2	HOUSING, OUTER RADIAL BEARING	1
10	46-573-2	SPACER, OUTER DATASET	1
11	77-324-2	WASHER, WAVE SPRING 1.102 X .85 INCH	1
12	74-12-3	SOCKET HEAD CAP SCREW 5/16-18 X 1.00 INCH (Full-Thread)	1
OR	75-705-3 *	SOCKET HEAD CAP SCREW 5/16-18 X 1 INCH (Full-Thread)	1
13	112-124-2	SNAP RING, INTERNAL 1.125 INCH	2
14	103-302-011	ARM-OUTER DATASET	1
OR	103-183-011	ARM, OUTER DATASET	1
15	95-47-2	POINTER, OUTER DATASET DSP9600	1
16	75-953-2	PAN HEAD MACHINE SCREW 10-16 X 1/2 INCH SELFDRIE	6
OR	48-57-2	RIVET, BLIND 5/32 X 1/4 INCH	6
17	75-522-2	SCREW, SELF-TAPPING 10-32 X .38 INCH	4
18	74-376-2	SOCKET HEAD CAP SCREW 5/16-18 X 7/8 INCH	2
19	124-117-2	O-RING .989 INCH I.D. X .070 INCH COUNTER SINK BUNA-N	1
20	228-64-2	STOP, OUTER DATASET 9600 (Shown in SWT installation positon)	1
21	75-312-2	TRUSS HEAD MACHINE SCREW 10-32 X 1/2 INCH	6
22	94-11-2	TIE-CABLE (Not Illustrated)	3
23	76-352-2	INSERT THREADED #10-32 STEEL	6
24	125-415-3	SENSOR, OUTER DATASET HD LATERAL	1
25	125-394-3	SENSOR, HALL, OUTER DATASET RADIAL	1
26	70-143-2	HARNES, SPIRAL WRAP .25 INCH O.D. BLACK (Not Illustrated)	8 IN.
27	Field Purchase	ADHESIVE, DEPEND 330 NO-MIX LOC	A/R
28	Field Purchase	ADHESIVE, DEPEND 330 ACTIVATOR	A/R
29	77-351-2	WASHER, #10 EXTERNAL TOOTH WASHER	3
30	11-1363-1-005	SUPPORT ASSEMBLY, OUTER DATASET STOP	1
31	121-269-2	BLOCK, PIVOT STOP	1
32	228-79-005	STOP, DATASET PIVOT	1
33	76-480-2	NUT 1/4-20 PIVOT RETAINER	1
34	75-239-2	SOCKET HEAD CAP SCREW 1/4-20 X 1.00 INCH (Full-Thread)	1
35	77-67-2	WASHER, FLAT 1/4 INCH	1
36	41-198-2	RETAINER, OUTER DATASET STOP	2
37	75-481-2	SOCKET BUTTON HEAD CAP SCREW 1/4-20 X .50 INCH	1
38	74-411-2	SOCKET BUTTON HEAD CAP SCREW 3/8-16X.63 INCH (Full-Thread)	1

* NOTE: Identified items are also contained in Outer Dataset Shaft Kit 20-2294-1 used to upgrade to 5/16 inch screw (item 12).

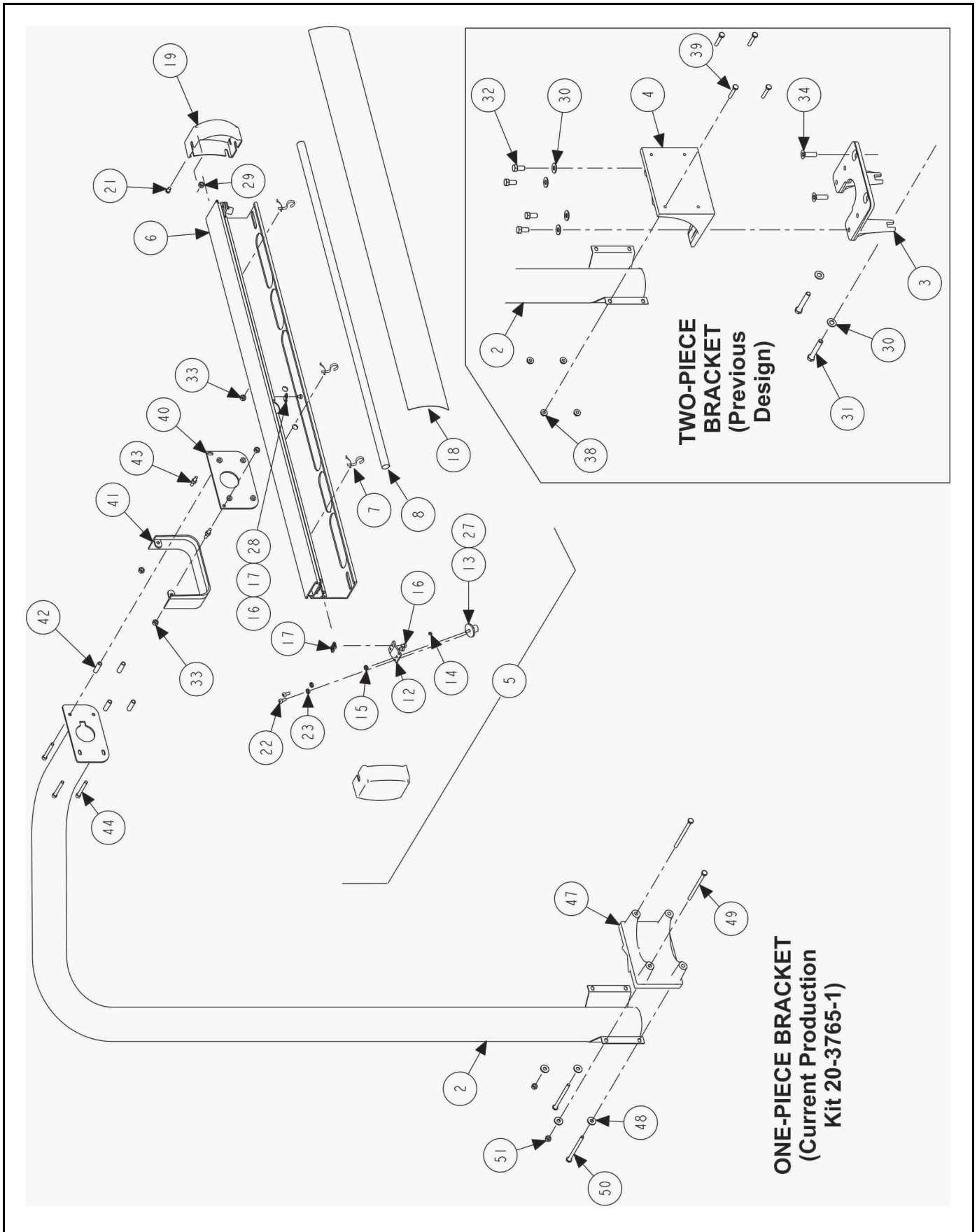
PARTS DESCRIPTION LISTING



PARTS DESCRIPTION LISTING

Index No.	Part Number	Description	Qty.
1	111-140-1	LOAD ROLLER ASSEMBLY, GEN4 RTF (Consisting Of:)	1
2	74-105-2	HEX HEAD CAP SCREW 3/8-16 X 1.00 INCH, GRADE 5 (FULL-THREAD)	6
3	77-21-2	WASHER, LOCK 3/8 INCH INTERNAL TOOTH	10
4	62-51-2	FOOT, PLASTIC 1.06 OD X 0.44 INCH HEIGHT	1
5	75-476-2	TRUSS HEAD SHEET METAL SCREW 10 X 3/4 INCH	1
6	113-197-2	BUSHING, LRO SENSOR	1
7	41-112	RETAINER, INNER DATASET	1
8	75-423-2	SCREW, SELF TAPPING 4-40 X .38 INCH	4
9	75-128-2	PAN HEAD MACHINE SCREW 1/4-20 X 3/4 INCH	4
10	77-67-2	WASHER, FLAT 1/4 INCH	4
11	98-283-2	SPRING, AIR ACTUATOR	1
12	74-220-2	SOCKET HEAD CAP SCREW 3/8-16 X .63 INCH (FULL-THREAD)	2
13	14-1162-1-005	BRACKET, AIRBAG	1
14	108-148-2	VALVE, QUICK EXHAUST W MUFFLER	1
15	135-333-2	PIN, DOWEL 3/8 X 1.00 INCH LONG	1
16	57-653-005	BAR, SHAFT ROLLER	1
17	135-53-2	PIN, ROLL 1/4 X 1 INCH	1
18	111-90-3	ROLLER, LOADED RUNOUT (Consisting Of:)	1
19	162-128-2	TAPE, NONSKID TREAD 24 INCH TRIMMED	1
20	111-94-2	ROLLER, LOADED RUNOUT	1
21	130-169-2	BEARING 35 mm X72 mm	2
22	Field Purchase	LOCTITE RETAINING COMPOUND #609	A/R
23	69-1030-2	COVER, LOAD ROLLER END	2
24	Field Purchase	TAPE, 3M 4920 DOUBLE COATED FOAM	6
25	112-109-2	SNAP RING, EXTERNAL WAVE 1.375 INCH	1
26	74-420-2	BOLT, LEVELING .81-12 OUTER DIAMETER X .59 INNER DIAMETER	2
27	74-206-2	SOCKET HEAD CAP SCREW 1/2-13 X 2.00 INCH (FULL-THREAD)	2
28	77-22-2	WASHER, LOCK 1/2 INCH INTERNAL TOOTH	2
29	77-295-2	WASHER, .515 X 1.00 X .19 INCH THICK	2
30	112-110-2	SNAP RING INTERNAL, 90.5 mm DIA	1
31	130-170-2	BEARING, 50 mm INNER DIAMETER X 90 mm OUTER DIAMETER	1
32	105-401-2	HOUSING, LOAD ROLLER BEARING	1
33	112-111-2	SNAP RING, SMALLLEY WHW-312	1
34	130-137-2	BEARING, 40 mm INNER DIAMETER X 80 mm OUTER DIAMETER	1
35	112-106-2	SNAP RING, TRUARC 5008-315	1
36	75-508-3	FLAT HEAD MACHINE SCREW 10-32X.50 INCH	1
37	124-117-2	O-RING .989 INNER DIAMETER X .070 INCH	1
38	46-504-2	SPACER, 7/16 X 7/8 X 5/16 INCH THICK	2
39	74-418-2	SOCKET HEAD CAP SCREW 3/8-16 X 2.00 INCH	3
40	77-296-2	WASHER, .407 X 1.00 X .19 INCH THICK	2
41	112-79-2	SNAP RING, EXTERNAL, 1-9/16 INCH DIAMETER	1
42	103-272-1-005	ARM, LOADED RUNOUT, GEN 5	1
43	97-450-2	SHAFT, ROLLER	1
44	112-83-2	SNAP RING, TRUARC 5108-137	1
45	16-321-2	TUBE, 5/16 INCH OUTER DIAMETER	108 in.
46	76-159-2	NUT, KEPS 3/8-16	1
47	98-303-2	SPRING, HOOD	1
48	128-603-2	DECAL, AIR PRESSURE LIMITS (Not Illustrated)	1
49	137-96-1	HOSE ASSEMBLY, PNEUMATIC SUPPLY	1
50	176-35-1	LOCATOR ASSEMBLY, MAGNET	1
51	125-395-3	SENSOR, HALL, LOAD ROLLER	1
52	75-522-2	SCREW, SELF-TAPPING 10-32 X .38 INCH	2
53	145-184-2	FITTING, 1/4 INCH NPT ADAPTOR	1
54	75-248-2	ROUND HEAD MACHINE SCREW 10-24 X 3/8 INCH	2
55	108-236-1	PNEUMATIC ASSEMBLY, RFT BALANCER (See Sheet 5 for Components)	1
56	136-78-2	FILTER / REGULATOR, GSP9700	1
57	74-43-2	SOCKET HEAD CAP SCREW 3/8-16 X 1.00 INCH (FULL-THREAD) (Not Illustr.)	4
58	113-179-2	BUSHING, BRAKE ACTUATOR ROD (Not Illustr.)	1

PARTS DESCRIPTION LISTING



PARTS DESCRIPTION LISTING

TUBE AND LASER ASSEMBLY (COMMON TO ALL LED KITS)

Index No.	Part Number	Description	Qty.
2	16-912-1-005	TUBE ASSEMBLY, TDC LASER SUPPORT	1
5	105-787-1	HOUSING, TDC LASER HEADER ASSEMBLY LED (Consists Of:)	1
6	105-514-2	HOUSING, TDC LASER HEADER	1
7	35-212-2*	LAMP, LED, 12 VOLT, 36 INCH	1
8	117-230-2*	HANGER, LED STRIP	3
12	14-1130-2	BRACKET, TDC LASER MOUNT	2
13	105-530-1	HOUSING, TDC LASER ASSEMBLY	2
14	98-427-2	SPRING, TDC LASER ADJUSTMENT	2
15	76-61-2	NUT, KEPS 10-32	2
16	75-608-2	PAN HEAD MACHINE SCREW 10-32 X .31 INCH	5
17	76-382-2	NUT-T	5
18	190-192-2	SIGN, TDC LASER SYSTEM	1
19	69-1204-2	COVER, TDC LASER END CAP	2
20	Field Purchase	ADHESIVE, LOCTITE 242	A/R
21	75-535-2	LOW HEAD SOCKET CAP SCREW 1/4-20 X .38 INCH	2
22	75-161-2	PAN HEAD MACHINE SCREW 10-32 X .50 INCH	4
23	76-11-2	NUT, HEX 10-32	4
24	128-1155-2	DECAL, LASER COMPLIANCE 2M	1
25	128-1308-2	DECAL, RX CABLE WRAP, RIGHT (Not Illustrated)	1
26	128-1309-2	DECAL, RX CABLE WRAP, LEFT (Not Illustrated)	1
27	77-35-2	WASHER, FLAT 5/8 INCH	2
29	76-13-2	NUT, HEX 1/4-20	4
33	76-13-2	NUT, HEX 1/4-20	6
35	38-1206-2	CABLE, PC POWER SUPPLY ADAPTOR (Not Illustrated)	1
36	77-45-2	WASHER-FLAT 3/16 (Not Illustrated)	2
37	76-159-2	NUT, KEPS 3/8 – 16 (Not Illustrated)	4
40	51-2332-1-005	PLATE, TDC HAMMERHEAD MOUNT ASSEMBLY	1
41	69-1271-2	COVER, TDC ADJUSTMENT	1
42	98-443-2	SPRING, TDC LASER ADJUSTMENT	4
43	134-141-2	STUD, 1/4-20 DOUBLE ENDED, BRASS	2
44	75-877-3	SOCKET HEAD CAP SCREW 1/4-20 X 2.00 INCH NYLON	4
45	75-535-2	LOW HEAD SOCKET CAP SCREW 1/4-20 X .38 INCH (Not Illustrated)	2
46	37-693-1	WIRE ASM, GEN3 LED HAMMERHEAD (for retrofitting to a GEN 3) (Not Illus.)	1

* Use retrofit kit 20-3766-1 to replace obsolete lamp with current light strip.

TWO PIECE MOUNT (OLDER VERSION)

Index	Part Number	Description	Qty.
3	11-1243-2	SUPPORT, TDC LASER BASE 9700	1
4	14-1129-2	BRACKET, TDC LASER BASE	1
30	77-65-2	WASHER, FLAT 3/8 INCH	6
31	74-16-2	HEX HEAD CAP SCREW 3/8-16 X 2.50 INCH (FULL-THREAD)	2
32	74-59-2	HEX HEAD CAP SCREW 3/8-16 X .75 INCH (FULL-THREAD)	4
34	74-461-2	BOLT, FLAT HEAD SOCKET CAP SCREW 3/8-16 X 1/4 INCH	2
38	76-367-2	NUT, FLANGE 1/4 - 20	4
39	75-703-2	HEX HEAD CAP SCREW 1/4-20 X 1.5 INCH GRADE 8	4

ONE PIECE MOUNT (NEWER VERSION FOUND IN KIT 20-3495-1)

Index	Part Number	Description	Qty.
47	14-1737-2	BRACKET, TDC LASER ONE PIECE	1
48	77-67-2	WASHER, FLAT 1/4 INCH	4
49	75-917-2	HEX HEAD CAP SCREW 1/4-20 X 4 INCH (FULL-THREAD) (GRADE 8)	2
50	75-918-2	HEX HEAD CAP SCREW 1/4-20 X 3.5 INCH (GRADE 8)	4
51	76-367-2	NUT, FLANGE 1/4 - 20	2