


HP OFFICEJET PRO 9117b Printer

HUNTER
Engineering Company

INSTALLATION INSTRUCTIONS

Form MN08283-00
Publication Date: 12-24
Supersedes 11-24

This document is for the setup of HP OfficeJet Pro 9117b printer on WinAlign, ProAlign and Balancers. The following procedures should be performed by an authorized representative.

 Refer to the Setup Guide instruction for first time use of HP Officejet Pro 9117b Printer. For more information refer to the User Guide from Printer box or www.hp.com/support.

WinAlign Setup (Windows 10)

1. Go to North America or international **Sales and Service** page.
2. Highlight **Service** tab and click **Downloads**.
3. Click on the **Service** section. Next click drop-down button next to **Printer Drivers**, select **HP OfficeJet Pro 9110b/9117b Printer Drivers – Windows 7 & 10 64-Bit** to download driver.

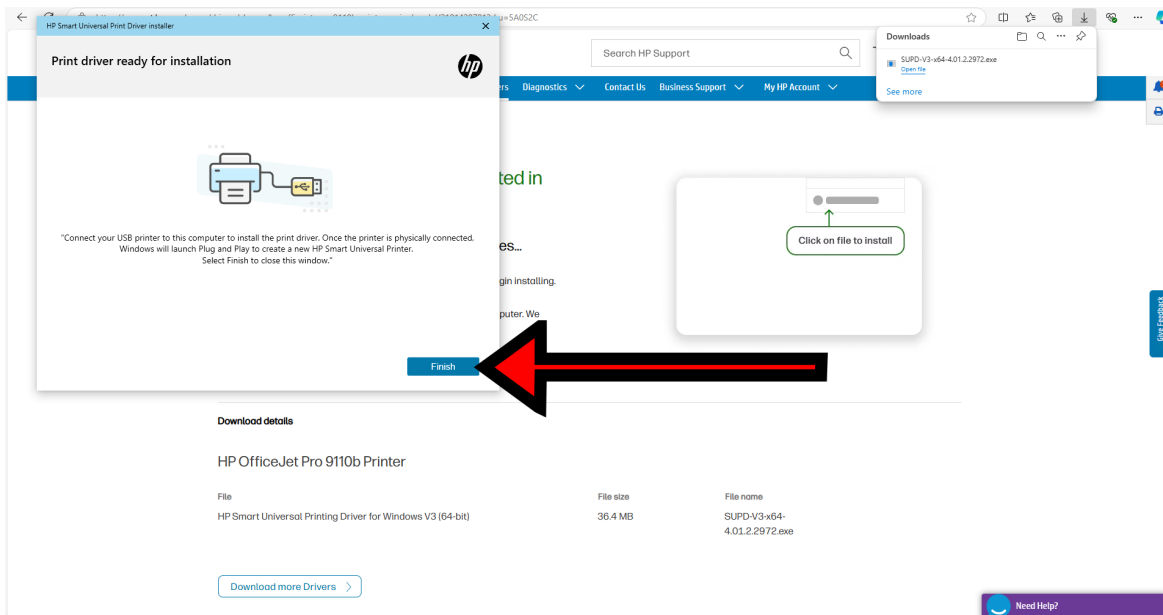


The screenshot shows the HP support website navigation menu. The 'Service' tab is highlighted with a red arrow. Below it, the 'Printer Drivers' section is expanded, and the 'HP OfficeJet Pro 9110b/9117b Printer Drivers - Windows 7 & 10 64-Bit (HW3, HW2B, HW2 & HW1B PCs)' option is highlighted with another red arrow.

Or click the links below:


[HP OfficeJet Pro 9110b/9117b Printer Drivers – Windows 7 & 10 64-Bit – North America](#)
[HP OfficeJet Pro 9110b/9117b Printer Drivers – Windows 7 & 10 64-Bit – International](#)


4. The download should be something similar to **SUPD-V3-x64-4.01.2.2972.exe**
5. Open the .EXE
6. Follow the on-screen prompts:
 - a. Unzip to run file.
 - b. Scroll to the bottom of the End-User License Agreement, check the box and click Next.
7. For USB connected printer:
Select **USB mode: Install a driver for USB Plug and Play**, check box for **Remove previous versions of HP Smart Universal Printing Driver**.
8. A prompt will display Print Driver ready for installation. Reconnect printer to power. Wait for drivers from printer itself to complete in lower right of screen, select **Finish**.



9. Printer is now ready for use.

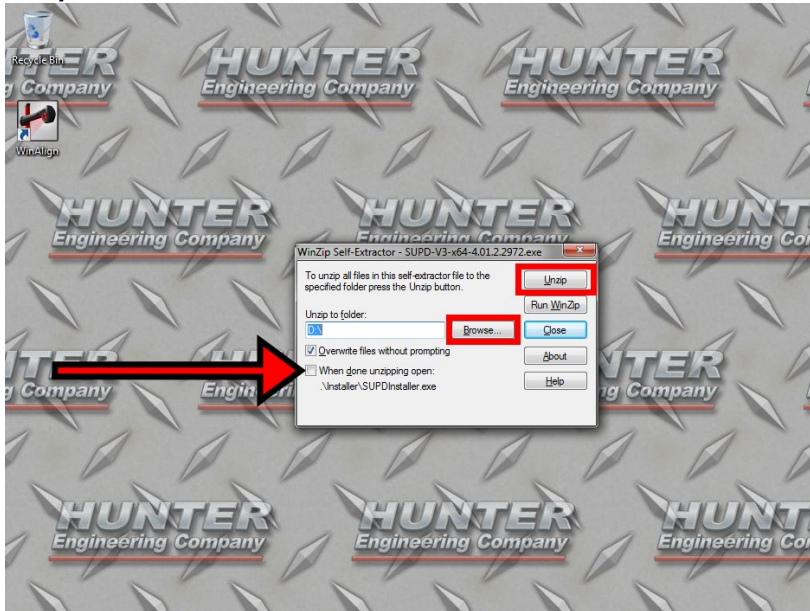
WinAlign Setup (Windows 7 64-bit / 32-bit)

 A flash drive will be required to download driver to Windows 7.

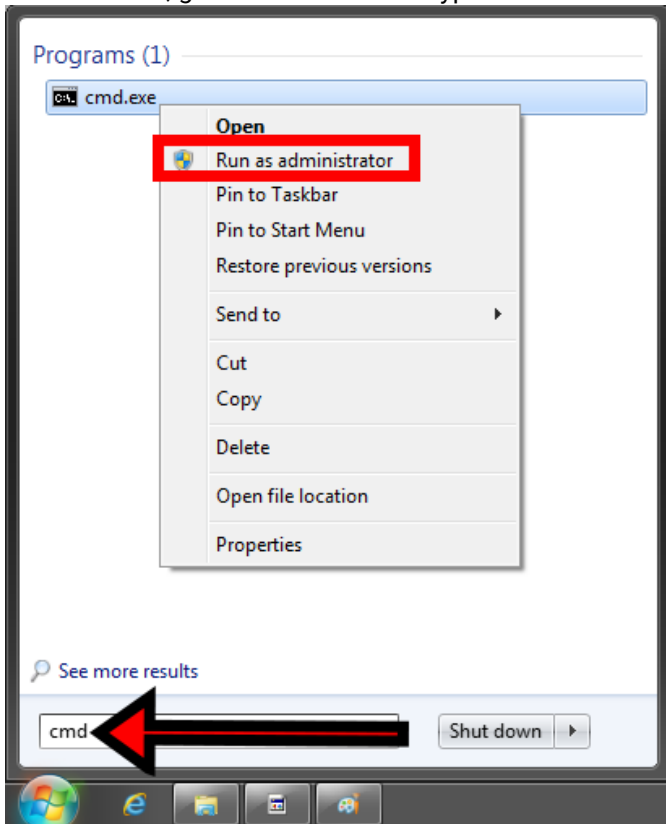
 Printer driver is required to be installed before connecting power to printer.

1. Go to Sales and Service page.
2. Highlight Service tab and click Downloads.
3. Click on the Service section. Next click drop-down button next to *Miscellaneous* and select the appropriate driver:
 - a. **HP OfficeJet Pro 9110b/9117b Printer Drivers – Windows 7 & 10 64-Bit** to download 64-bit driver:
([North America](#)) / ([International](#))
 - b. **HP OfficeJet Pro 9110b/9117b Printer Drivers – Windows 7 32-Bit** to download 32-bit driver:
([North America](#)) / ([International](#))
4. The downloaded file will be:
 - a. **SUPD-V3-x64-4.01.2.2972.exe** for 64-bit. Double click to open.
 - b. **SUPD-V3-x86-4.01.2.2972.exe** for 32-bit. Double click to open

5. Open the EXE file to prompt a *WinZip Self-Extraction* window:
 - a. Click "**Browse**" and select the flash drive for "Unzip to folder."
 - b. Uncheck "When done unzipping open" checkbox.
 - c. **Unzip** to run file.



6. Eject the flash drive with the drive from PC and Plug it into Hunter PC.
7. Do not connect printer to PC yet.
8. On Hunter PC, go to start menu and type **cmd.exe** into search bar. Right click on it and select "Run as administrator."

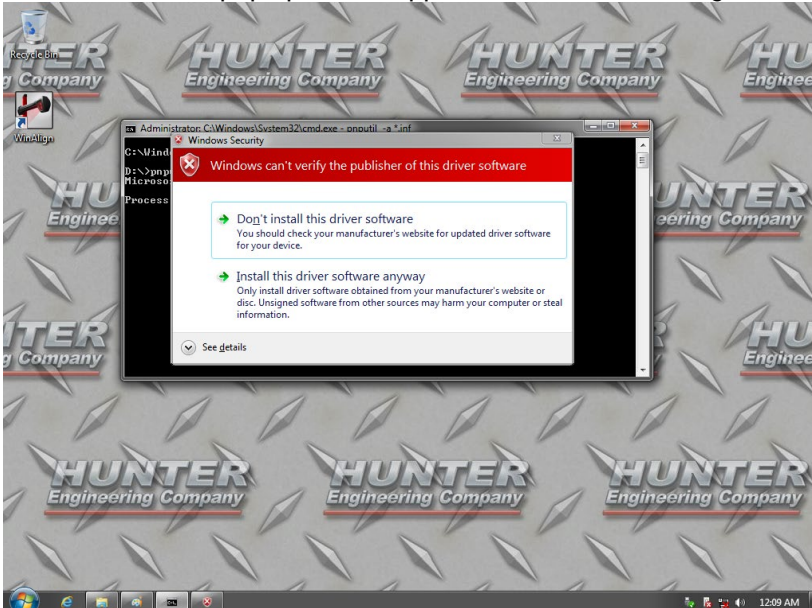


Driver installation will fail if cmd.exe is attempted by non-administrator account and it will ask for elevation.

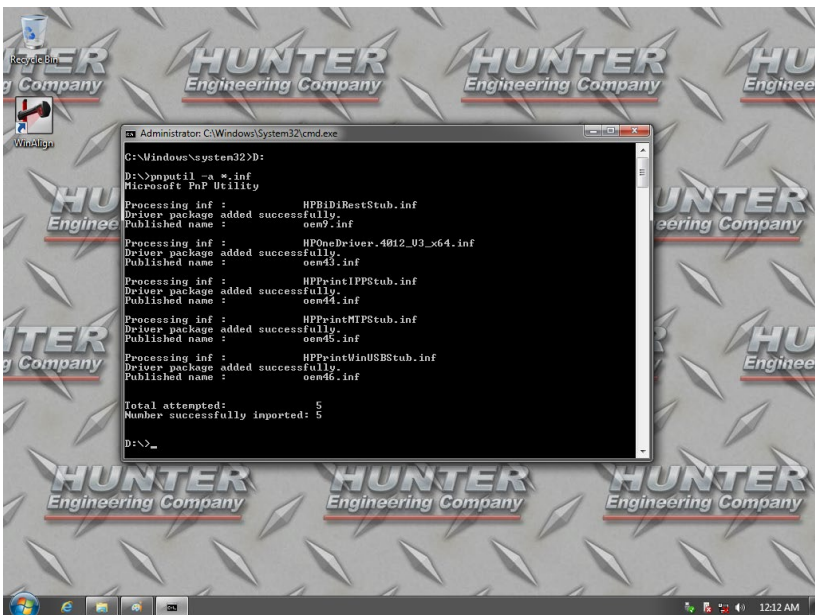
9. From the open command prompt window, type the letter of the flash drive port (for example shown below E:) and type command: **pnputil -a *.inf** into window.



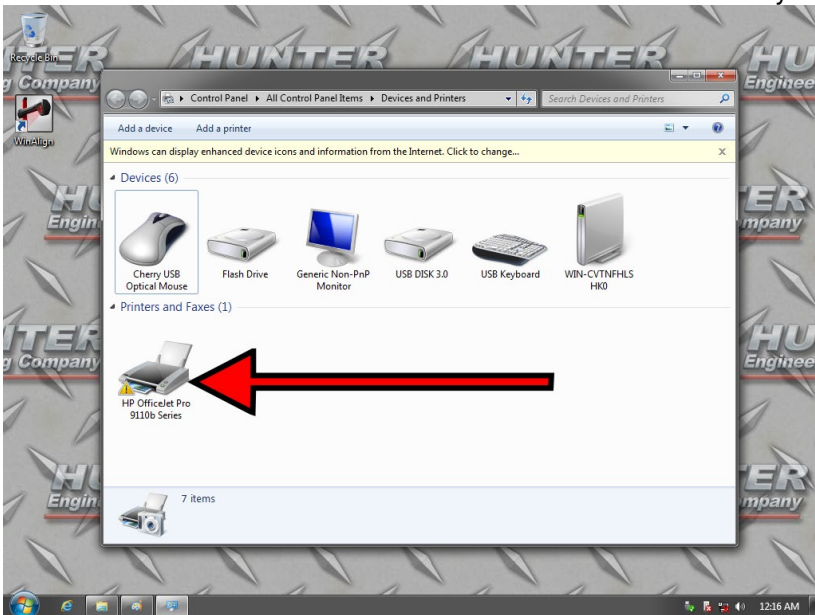
10. Press **Enter** and a pop up should appear several times asking to install. Select **Install this software anyway**.




11. Completion of install should result in message "Total Attempted: 5; Number successfully imported: 5" at bottom of window.



12. Connect powered off printer to Hunter PC using USB A to USB B cable. Plug power cord into outlet and wait for drivers associated with printer to finish.
13. Click on Windows Start Menu. Select Devices and Printers to verify if printer is listed.



 Disregard the caution sign. It does not interfere with the application functions.

14. Listed printer is now ready for use.
15. If the printer shows up as a portable media device, wait for a brief time to see if it refreshes and shows as a printer. If it remains as a portable media device, follow the procedure in this FAQ: <https://salesandservice.hunter.com/a108312-00.pdf?id=32728>

ProAlign (PA200)



NOTE: Flash drives must be formatted as FAT32 and must be named.

PA200 compatibility with a printer driver installation package depends on the Operating System to match the proper RH# file it supports as listed below:

RH3 and RH4 = 64-Bit O/S

HP OfficeJet Pro 9110b/9117b Printer Drivers - RH3 – ([North America](#))

HP OfficeJet Pro 9110b/9117b Printer Drivers - RH3 – ([International](#))

Software version range: 2.0.0.30 to 3.2.0.59

HP OfficeJet Pro 9110b/9117b Printer Drivers - RH4 – ([North America](#))

HP OfficeJet Pro 9110b/9117b Printer Drivers - RH4 – ([International](#))

Software Version range: 3.5.0.61.X17 to current

Installation

1. From the ProAlign home screen, click on the 3rd center tab.



2. Select **Identify Software** to display current software information.

ProAlign 2[®]



Select the desired function.

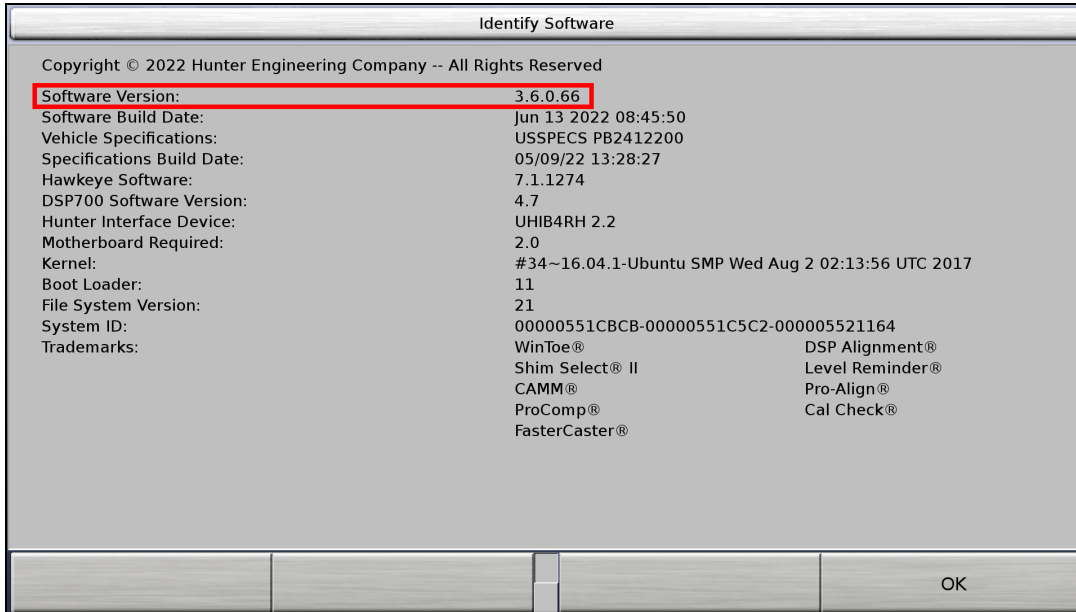
Create Installation Report

Network
Diagnostics

Identify
Software

Show
Authorization

3. Identify the current software version in use.

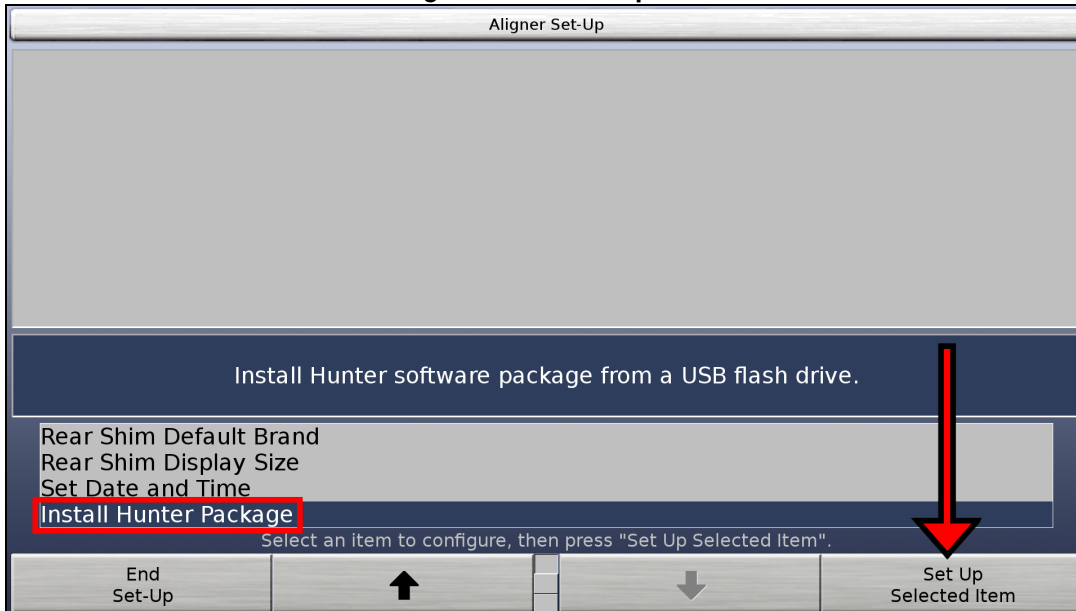


For example, current software version shown above is 3.6.0.66. Printer Driver RH4 is compatible due to RH4 support ranges from Software Version 3.5.0.61 to higher.

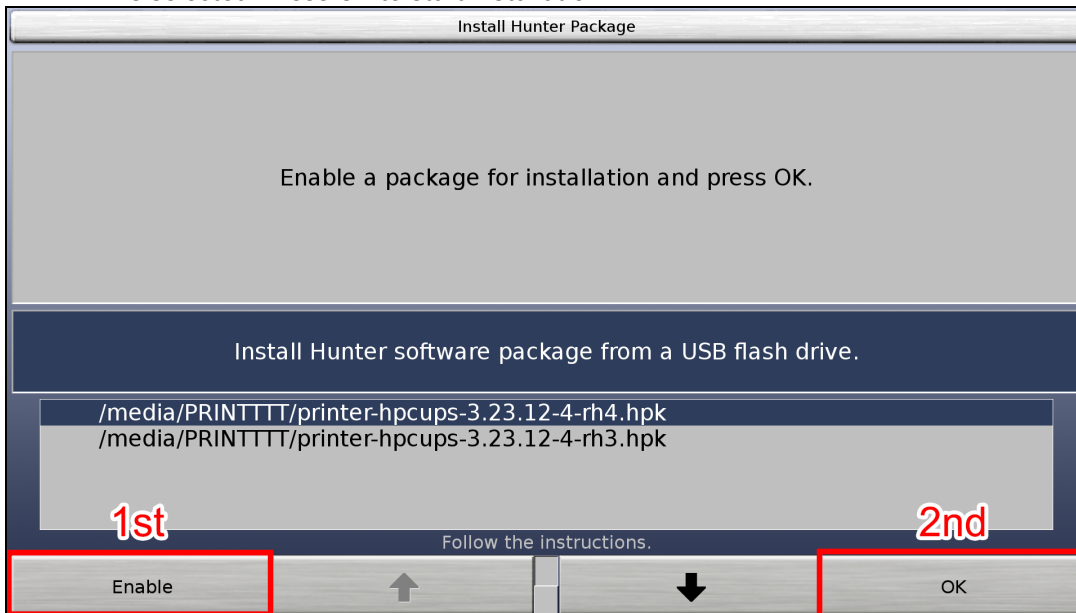
4. Identify the Software Version and click **OK** to exit.
5. Go to a computer with internet access and download the proper file to a flash drive:
 - a. HP OfficeJet Pro 9110b/9117b Printer Drivers - RH3 - ([North America](#)) / ([International](#))
 - b. HP OfficeJet Pro 9110b/9117b Printer Drivers - RH4 - ([North America](#)) / ([International](#))
6. The flash drive must be formatted as FAT32. Right click on the Flash drive. Select **Rename** and type in a name. PA200 does not recognize flash drives that are not named.
7. Insert Flash drive into PA200 PC.
8. Connect printer to PC via USB and power on.
9. On the ProAlign home screen click on the 2nd center tab and select **Set Up Aligner**.



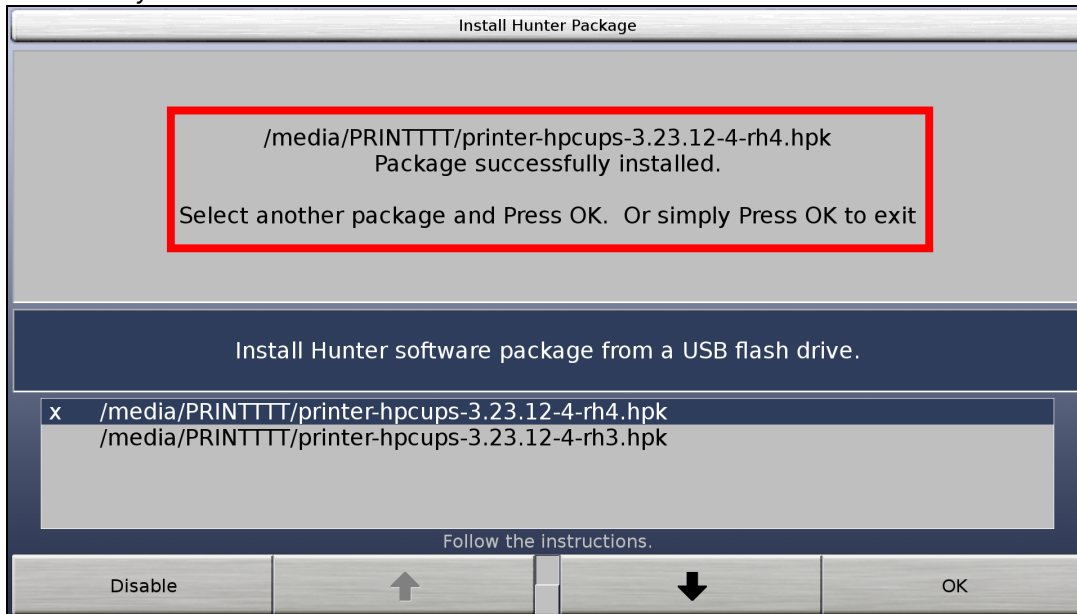
10. Scroll down to **Install Hunter Package** and click **Set Up Selected Item**.



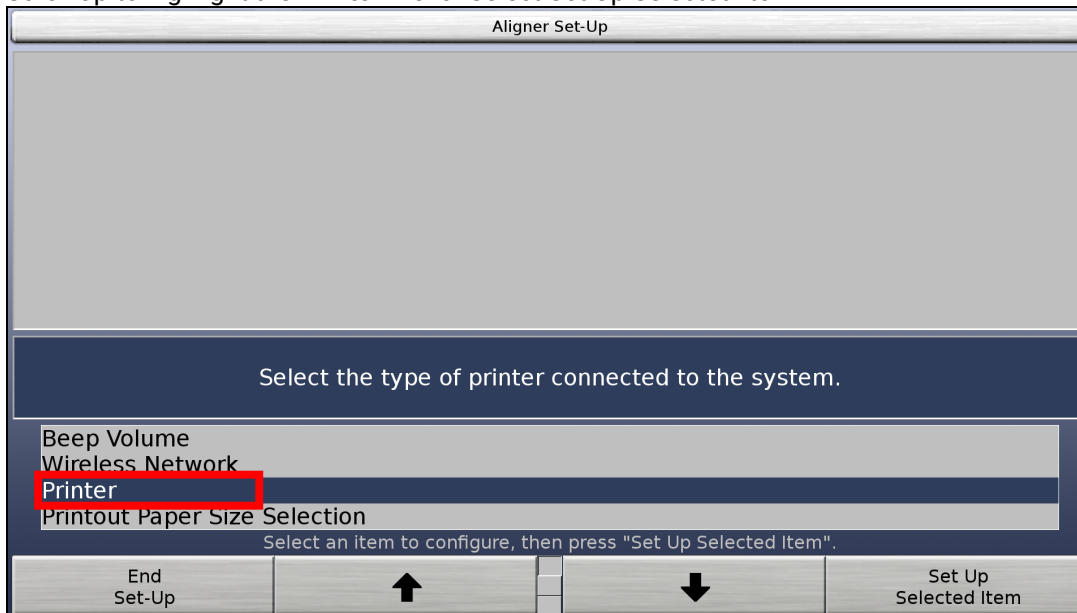
11. Follow steps on screen. Highlight and click **Enable**. A X will appear in front of the package to ensure the correct **RH3** or **RH4 HPK** is selected. Press **OK** to start installation.



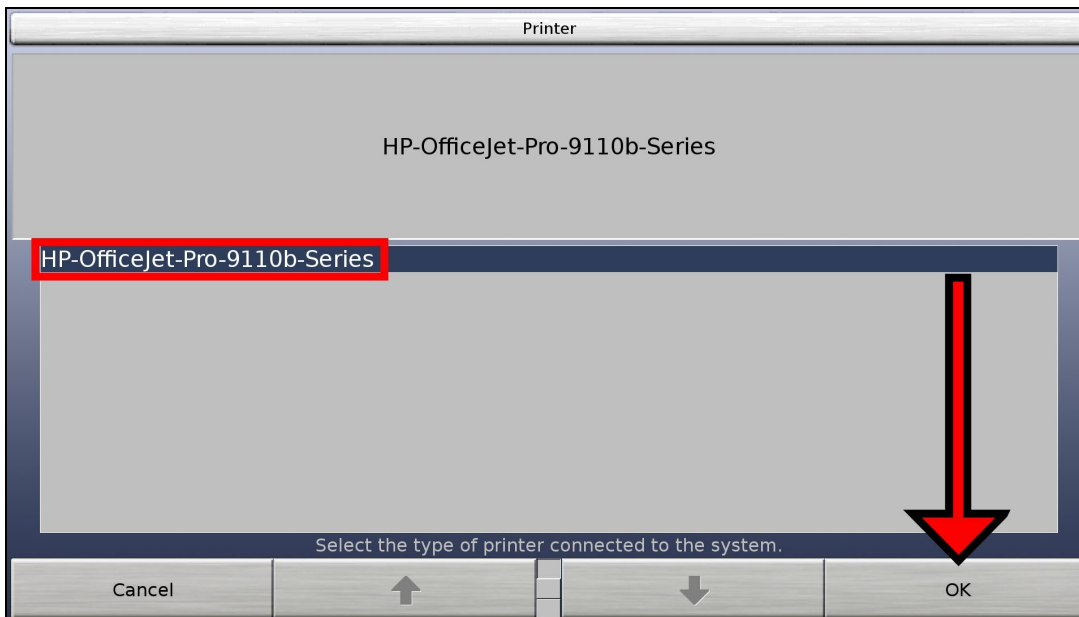
12. A new message will appear at the top to display information regarding the installation process such as *Package successfully installed*. Select **OK** to exit.




13. Scroll up to highlight the **Printer** menu. Select Set Up Selected Item.

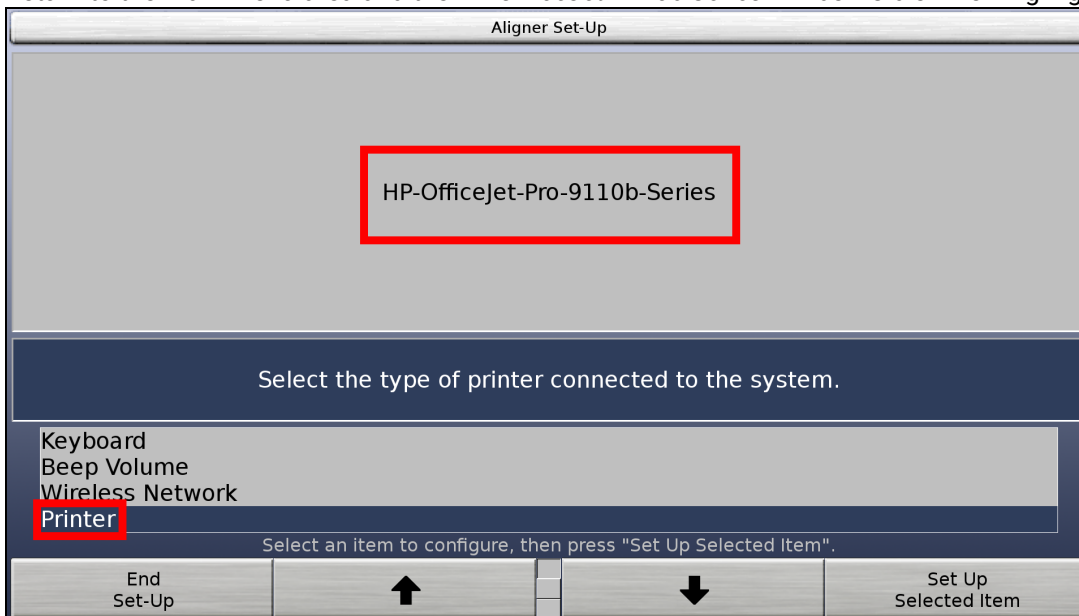


14. *HP OfficeJet Pro 9110b Series* should be visible. Select **OK** to complete the printer set up process.



 If printer does not show, proceed to reboot the pc and reselect the Printer menu. HP OfficeJet will be visible. Proceed with step #14 and continue the process.

15. Return to the main menu area and the *HP OfficeJet 9110b Series* will be visible when highlighting Printer.



16. This concludes ProAlign printer setup and printer is now ready for use.

Balancers



NOTE: Flash drives must be formatted as FAT32 and must be named.

Balancer compatibility with a printer driver installation package depends on the Operating System to match the proper RH# file it supports as listed below:

RH3 and RH4 = 64-Bit O/S

HP OfficeJet Pro 9110b/9117b Printer Drivers - RH3 - [North America](#)

HP OfficeJet Pro 9110b/9117b Printer Drivers - RH3 - [International](#)

Software version range: 3.0.0.469 to 4.0.1.559

HP OfficeJet Pro 9110b/9117b Printer Drivers – RH4 - [North America](#)

HP OfficeJet Pro 9110b/9117b Printer Drivers – RH4 - [International](#)

Software Version range: 4.1.0.590 to current

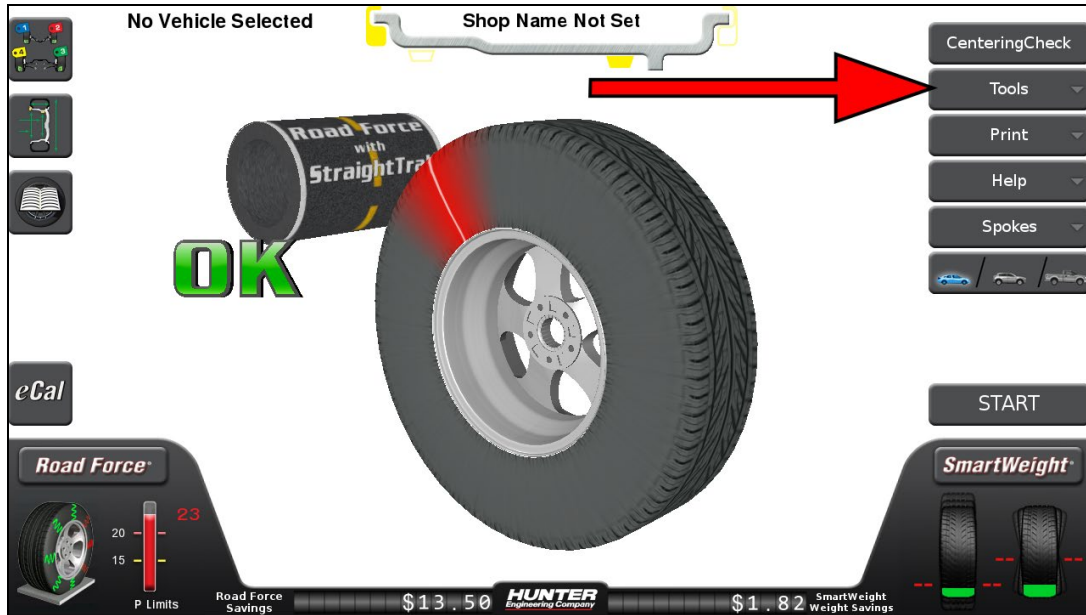
Download both drivers to flash drive to reduce unnecessary trips to PC. The flash drive must be formatted as FAT32. Right click on the Flash drive. Select **Rename** and type in a name. Balancers will not recognize flash drives that are not named.



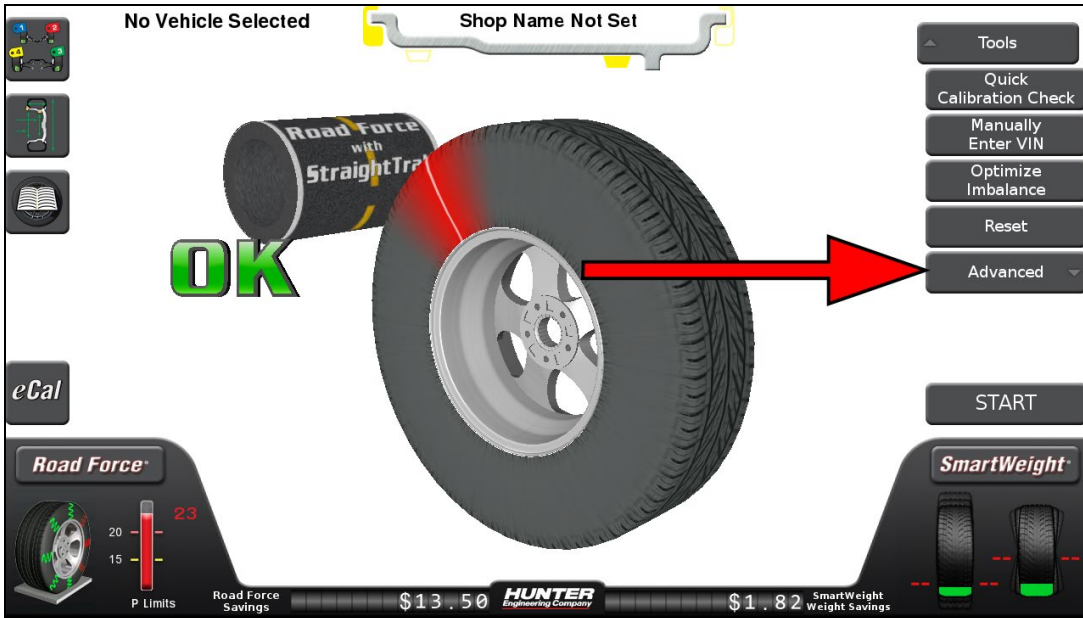
USB Hub with two USB ports at the minimum required for the following steps. One port for flash drive and the other port for HP printer.

Plug in USB hub with flash drive and printer connected. Plug power cord to printer to automatically power it on.

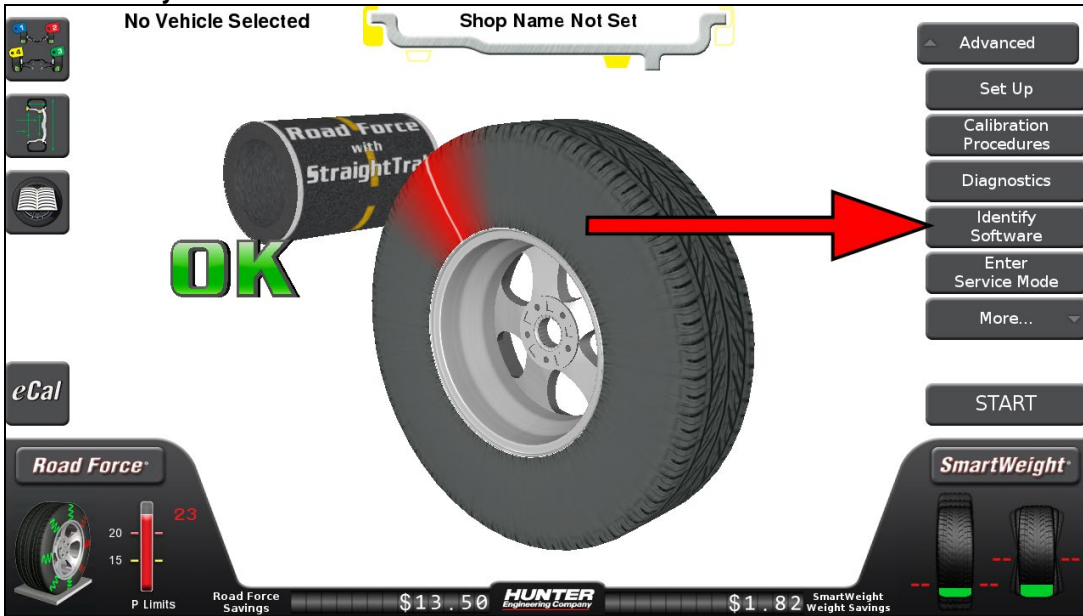
1. Select Tools



2. Select **Advanced**.



3. Select **Identify Software**.

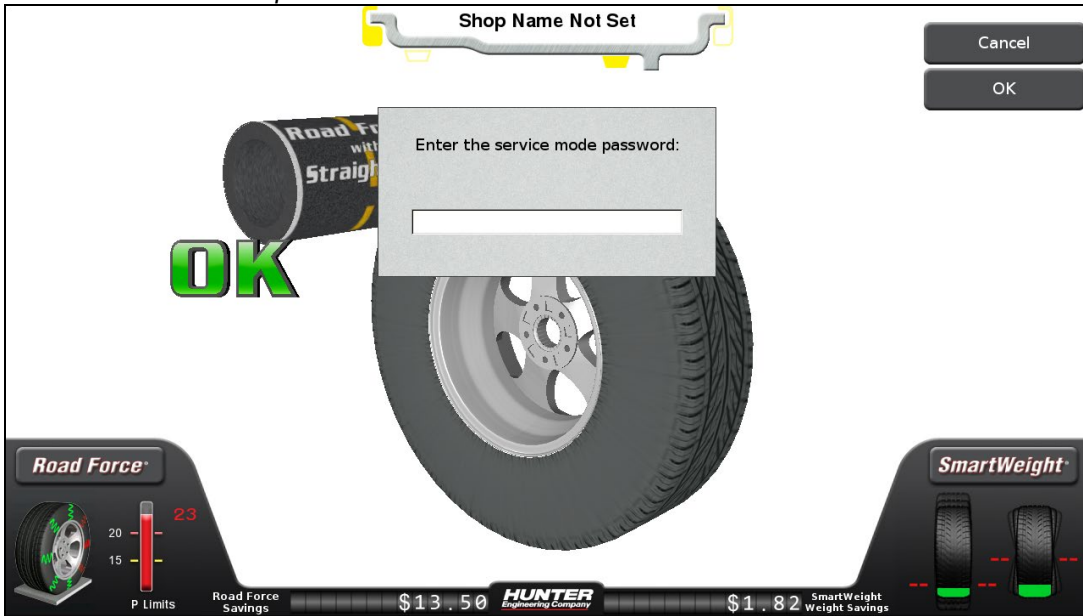


4. Observe the *Software Version* to identify the proper Software Version to install. Select **Exit** when finished.

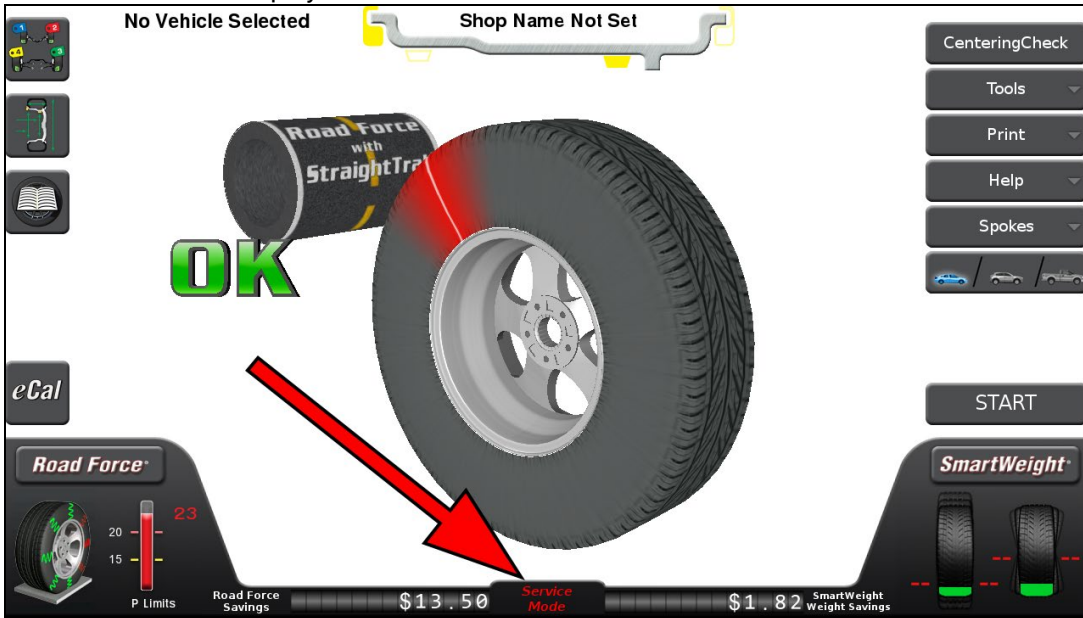


5. Exit will return to home screen. Select **Tools > Advanced > Enter Service Mode**.

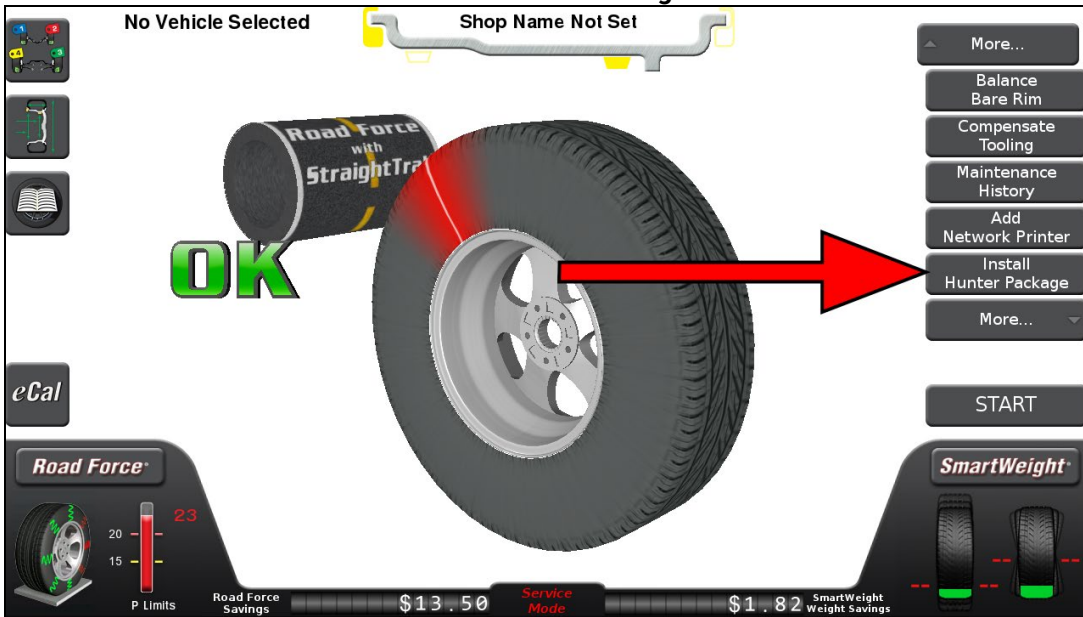
6. Enter the service mode password.



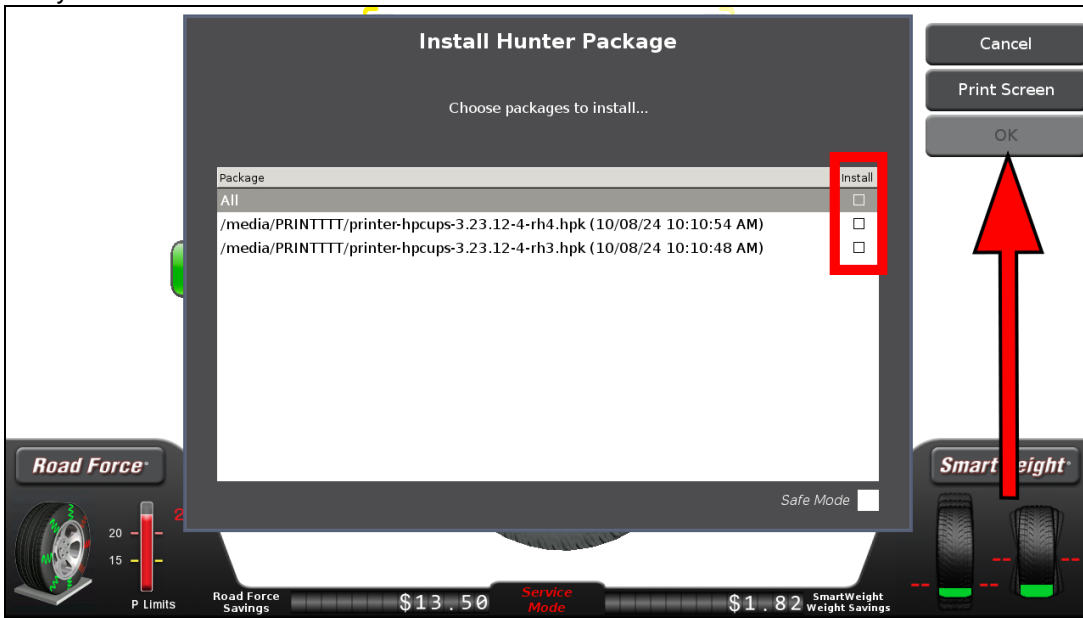
7. Service will now be displayed at the bottom center of the screen.



8. Select **Tools > Advanced > More > Install Hunter Package**.

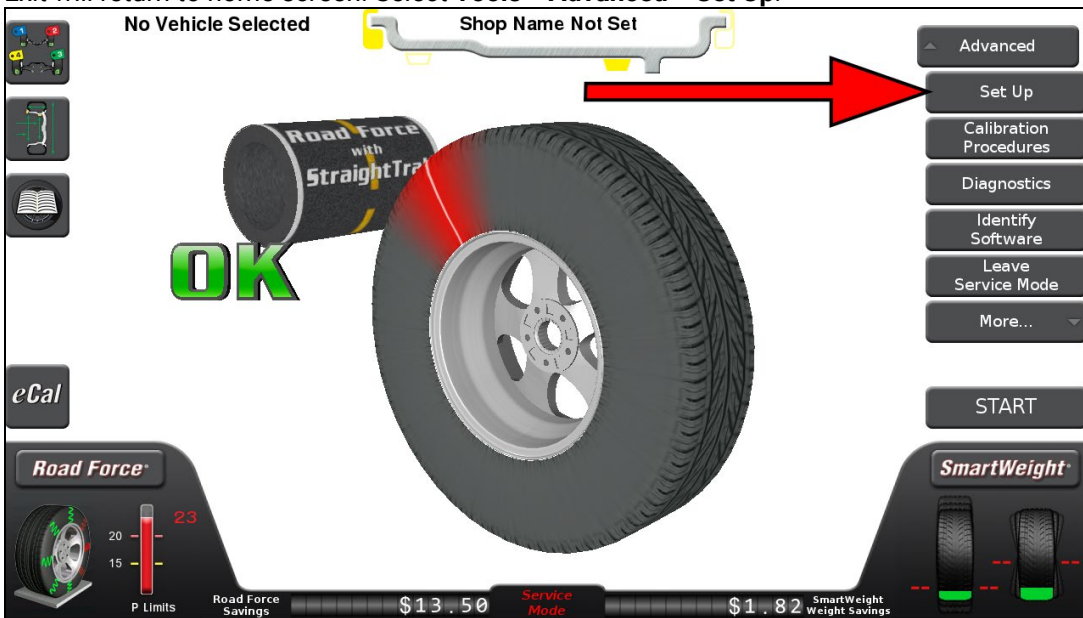


9. Check the box next to the appropriate Printer Driver package to ensure the correct RH3 or RH4 HPK is selected. Select **OK** when ready to install.



10. The download screen will appear, and display *Package successfully installed* when download. Select **Exit**.

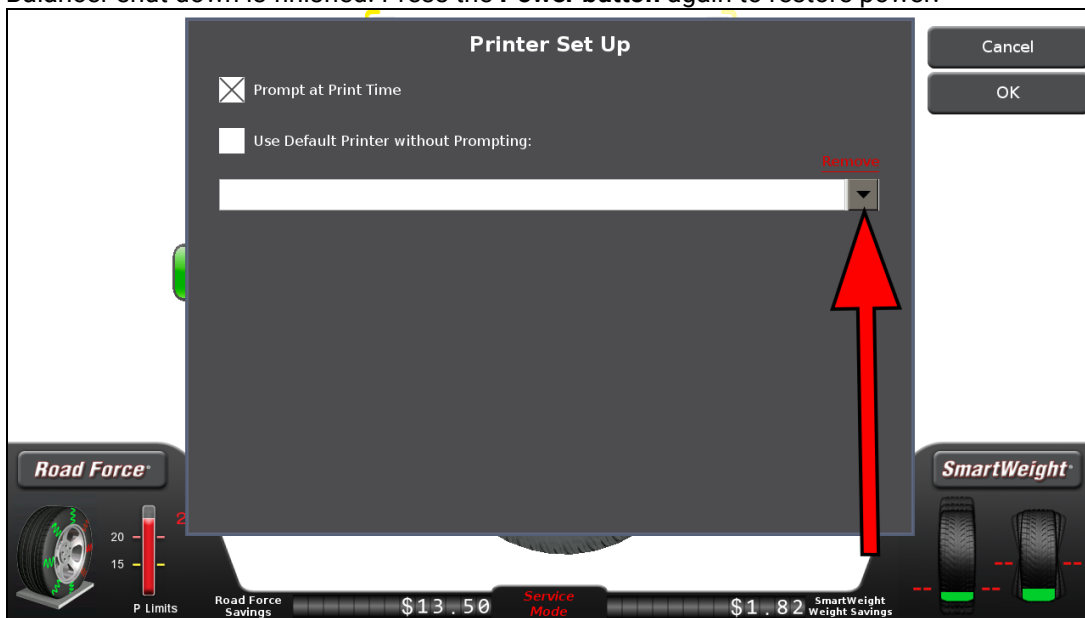
11. Exit will return to home screen. Select **Tools > Advanced > Set Up**.



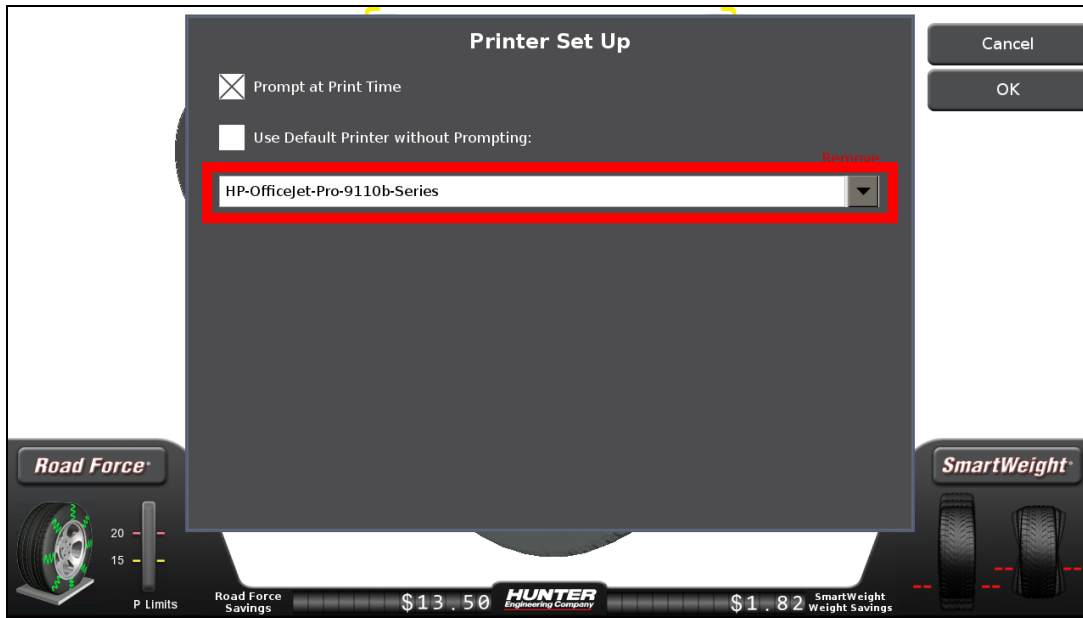
12. In the *Balancer Set Up* menu scroll down to Printer and highlight it. Select **Set Up Selected Item**.



13. Open the dropdown in *Printer Set Up* menu. If printer is not visible, press the **Power** Button to shut down the Balancer. When Balancer shut down is finished. Press the **Power button** again to restore power.



14. The Balancer will return to *Technician mode*. That is acceptable. Select Tools > Advanced > Set Up. From Balancer Set Up menu scroll down to Printer to highlight it. Select Set Up Selected Item. **HP-OfficeJet-Pro-9110b-Series** will be visible in the dropdown. Select **OK**.



15. Printer setup is now complete.