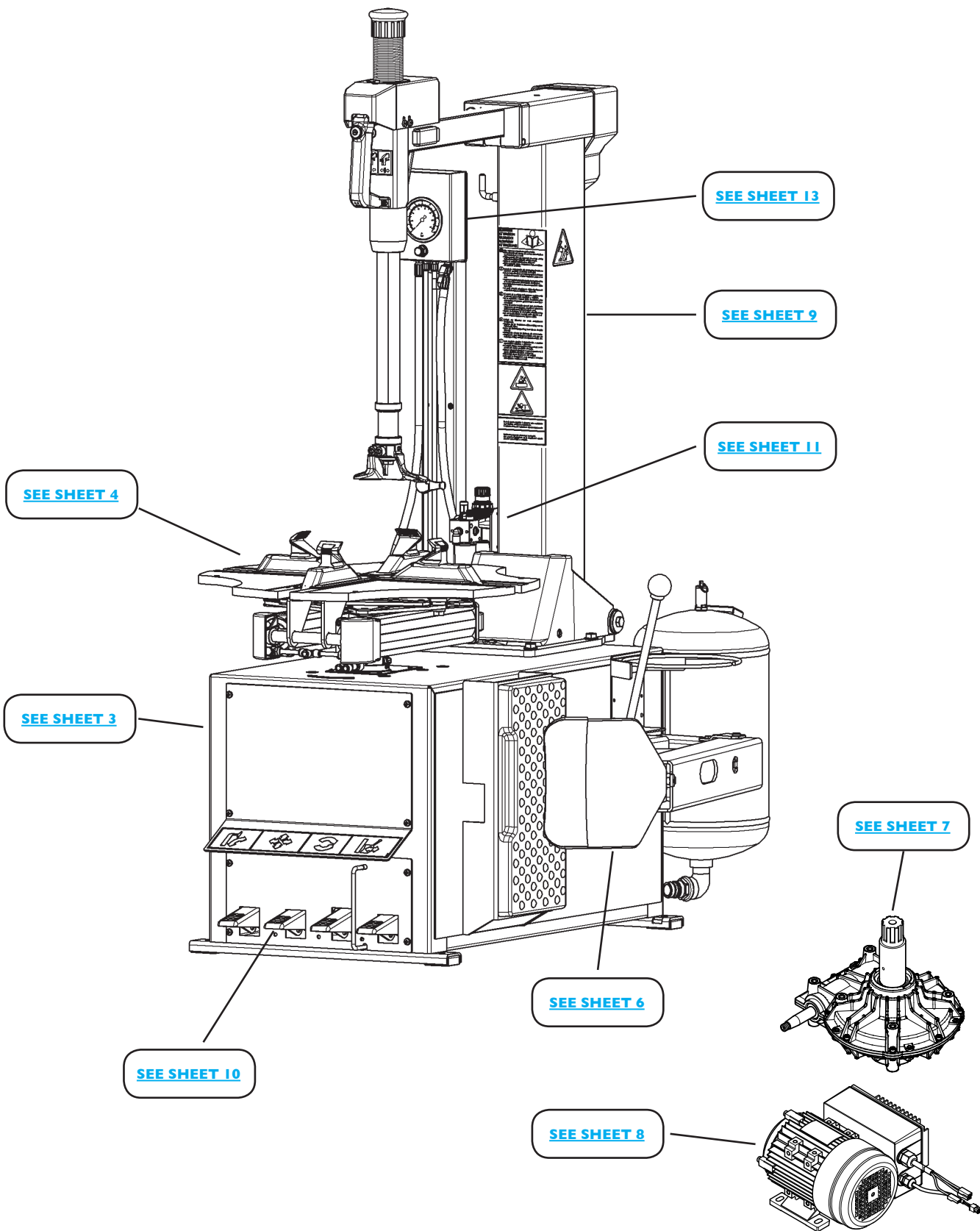


TCX54 Tire Changer
©2016 Hunter Engineering Company

OVERALL



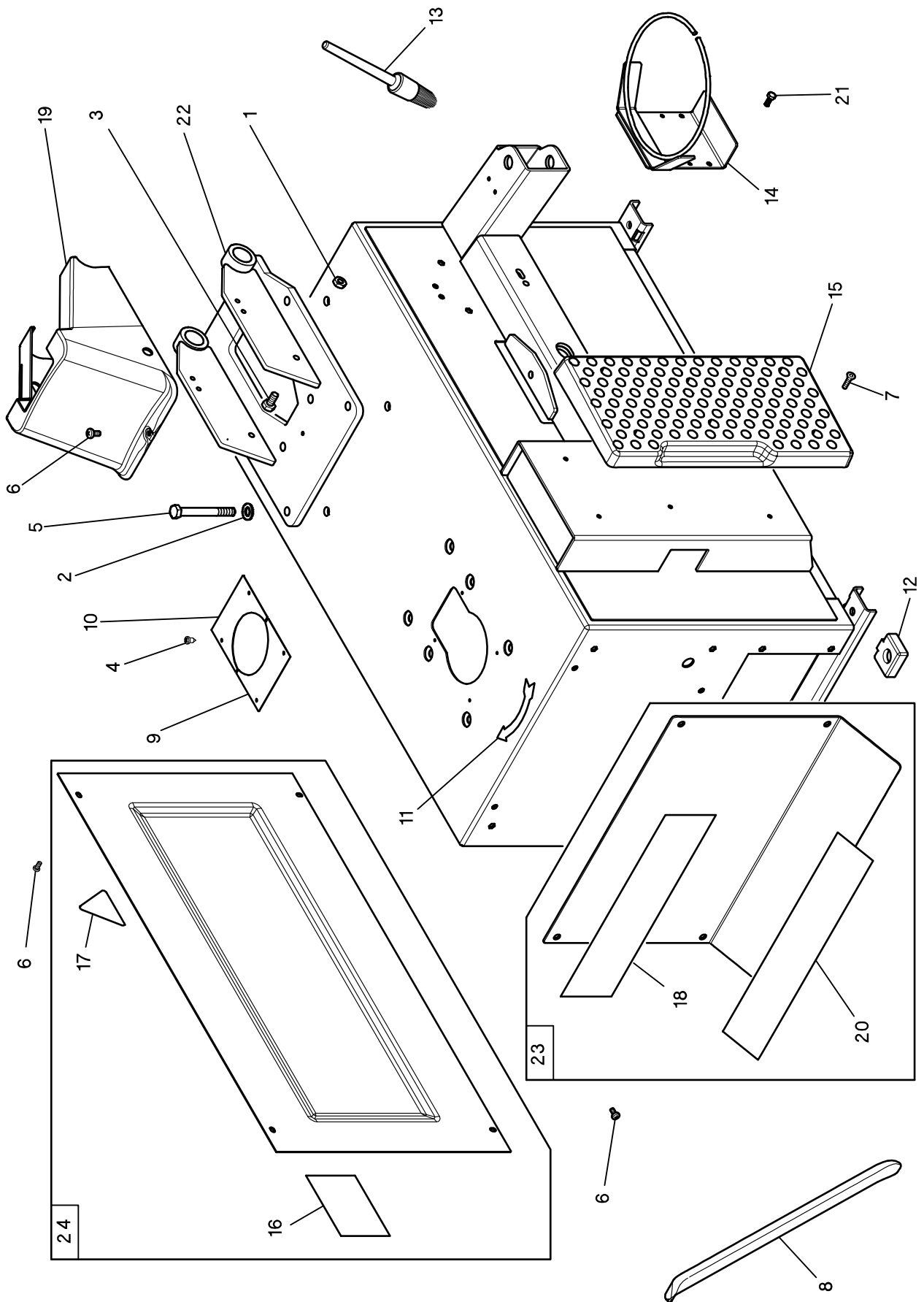
TCX54 Tire Changer

REFER TO NEXT SHEET FOR PARTS DESCRIPTION LISTING

TCX54 ACCESSORIES (NOT SHOWN)

Part Number	Description
RP11-3-01347	Mounting Paste
RP11-5-490223	Plastic Shovel Protectors (4)
RP11-4294838	Applicator Brush
RP11-8-11400085	Jaw Protectors (4)
RP6-0322	Bead lever
RP11-8-11400096	Mount Head Insert (10)
RP11-8-11400098	Plastic Bead Lever Protector Sleeve

FRAME



[RETURNS TO OVERALL](#)

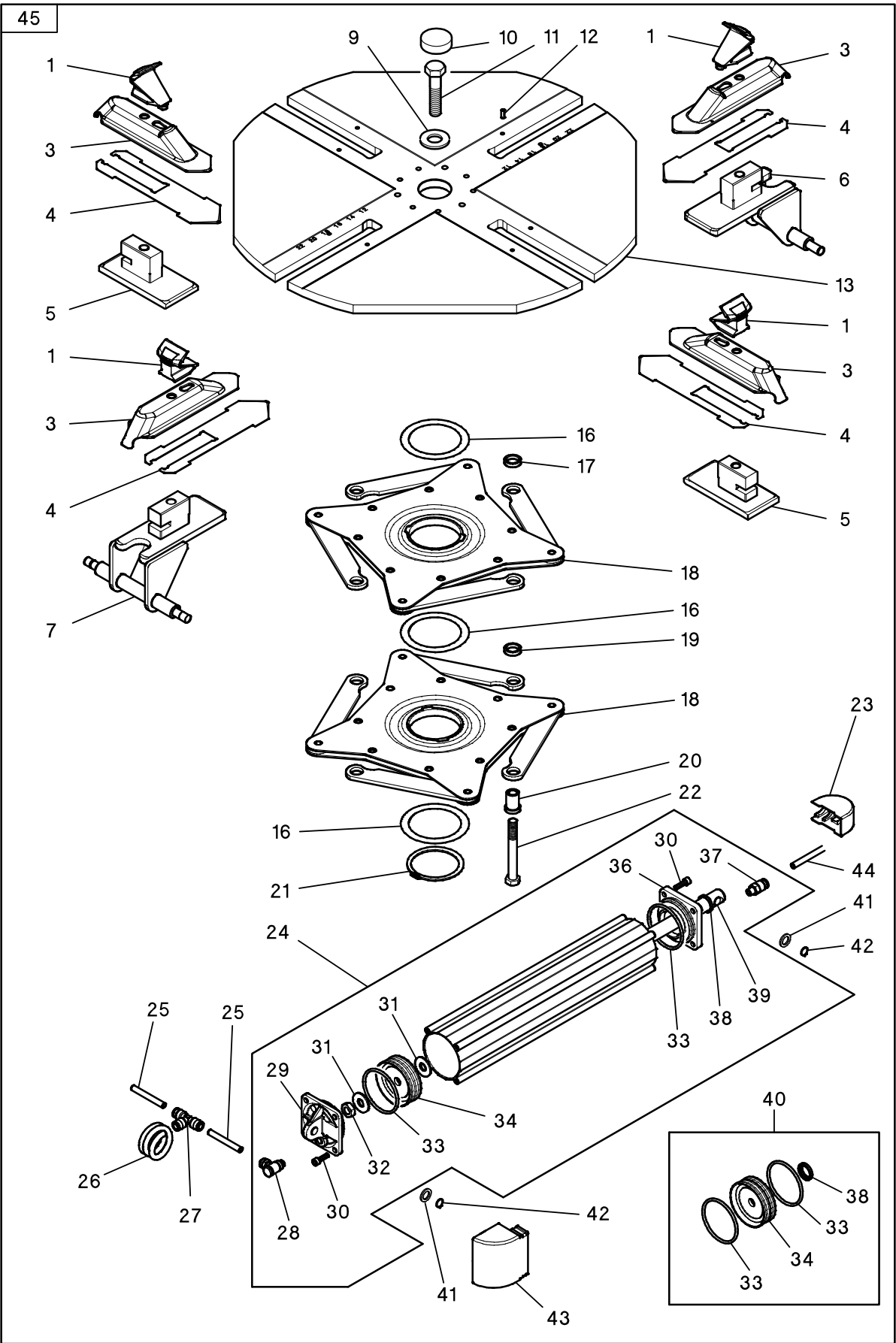
TCX54 Tire Changer

REFER TO NEXT SHEET FOR PARTS DESCRIPTION LISTING

Index No.	Part Number	Description
1	RP11-2-00157	NUT M10
2	RP11-2-00214	WASHER FOR HEX CAP SCREW M12
3	RP11-2-00379	HEXAGON HEAD CAP SCREW M10X20
4	RP11-2-02764	SELF-TAPPING SCREW D.3,9X913
5	RP11-2-03329	HEXAGON HEAD CAP SCREW M12X100
6	RP11-2-02364	CROSS PAN HEAD SCREW M6X16
7	RP11-2-00711	SOCKET COUNTERSUNK SCREW M6X16
8	RP11-3009516	TYRE LEVER
9	RP11-3020173	FRONT PROTECTION PLATE
10A	RP11-3020172	REAR PROTECTION PLATE (GP)
10B	RP11-3020174	REAR PROTECTION PLATE
11	RP11-3020842	SENSE OF ROTATION ARROW
12	RP11-4-406032	RUBBER FOOT H.25

Index No.	Part Number	Description
13	RP11-4294838	TYRE PASTE APPLICATOR
14	RP11-4-400539	TYRE PASTE CONTAINER SUPPORT
15	RP11-4-401740	WHEEL SUPPORT
16	RP11-4-402030	DECAL, GP PEDAL
17	RP11-4-402353	DECAL, WARNING TENSION
18	RP11-4-120551	DECAL, HUNTER TCX54
19	RP11-4-403768	PLASTIC PROTECTION
20	RP11-4-402639	DECAL, 2 SPEED PEDAL
21	RP11-2-00361	HEXAGON HEAD CAP SCREW M6X16
22	RP11-4-120564	TILTING COLUMN SUPPORT
23	RP11-5-107172	PEDALS COVER + LABELS
24	RP11-5-107171	LEFT SIDE PANEL WITH LABELS

TURNTABLE

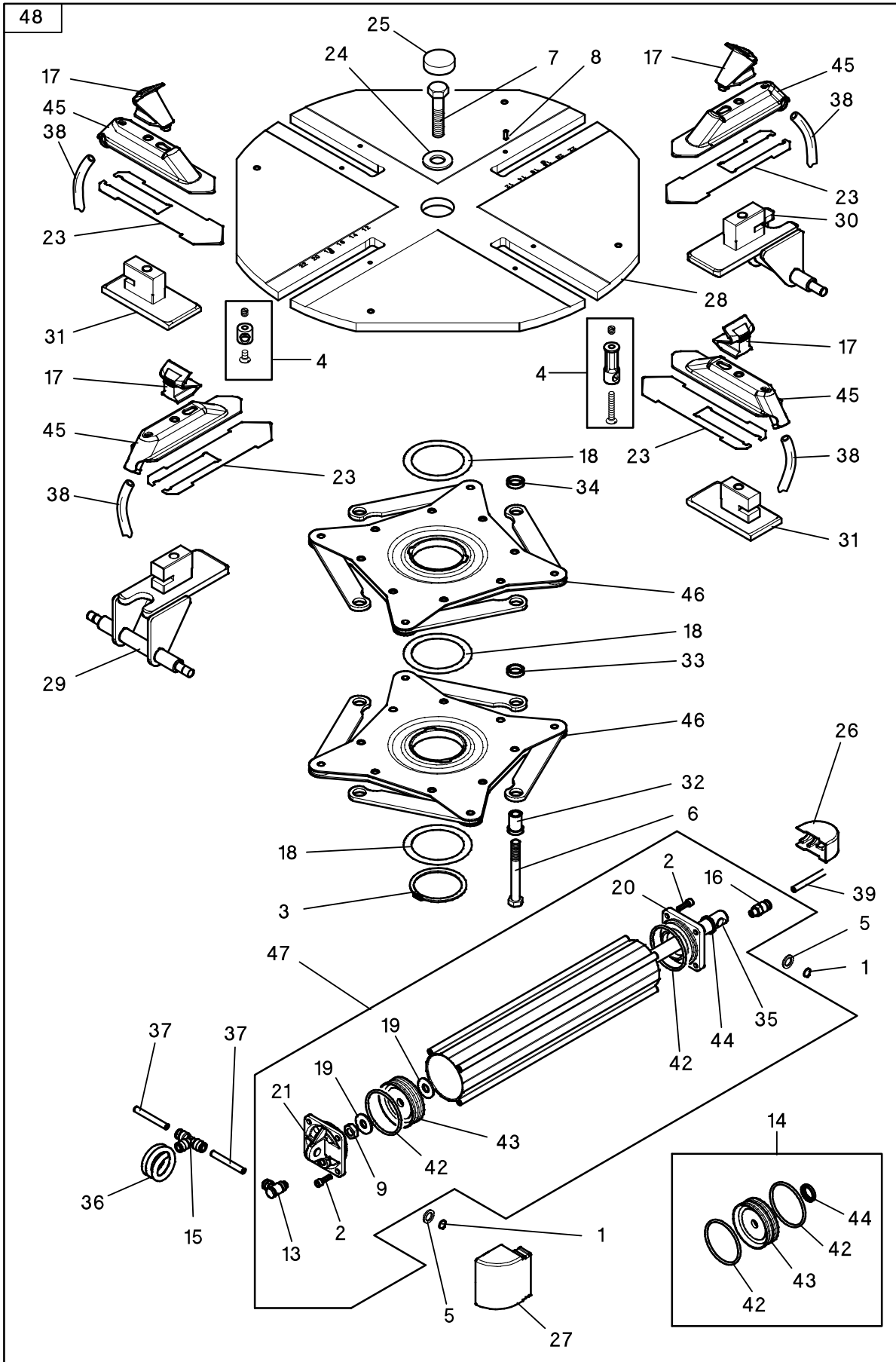


[RETURNS TO OVERALL](#)

Index No.	Part Number	Description
1	RP11-3008225	CLAMPING JAW
3	RP11-4-402075	SLIDE (red spotted indent)
4	RP11-3021213	COVER PLATE
5	RP11-4-401688	SLIDING GUIDE
6	RP11-4-401686	SLIDING GUIDE WITH PIN
7	RP11-4-401685	SLIDING GUIDE WITH PIN
9	RP11-3094668	TURNTABLE WASHER
10	RP11-3308152	TURNTABLE CAP
11	RP11-2-71441	HEX.HEAD CAP SCREW M16X1,5X40
12	RP11-2-71921	SPRING-TYPE STRAIGHT PIN D5X14
13	RP11-4-116064	TURNTABLE 24"
16	RP11-3010581	WASHER D.75X97,5X0,5
17	RP11-4-401735	SPACER D.18X24X5,5
18	RP11-5-400428	CONTROL PLATE
19	RP11-4-401734	SPACER D.18X24X6,5
20	RP11-4-401733	BUSH D.12X18X24,5
21	RP11-2-02519	RETAINING RING FOR SHAFT D.72
22	RP11-2-03329	HEXAGON HEAD CAP SCREW M12X100
23	RP11-3321211	CYLINDER FRONT COVER
24	RP11-5-491078	COMPLETE CYLINDER D.70X20X355

Index No.	Part Number	Description
25	RP11-4-401998	RILSAN HOSE D.8-6 L.62
26	RP11-4-401988	POLYURETHAN SPIRAL HOSE T8-5
27	RP11-3-00025	TEE CONNECTOR T.8
28	RP11-2201587	ELBOW MALE ADAPTOR G1/8 T.8
29	RP11-4-119854	CYLINDER REAR FLANGE D.70
30	RP11-2-00310	SOCKET HEAD CAP SCREW M6X20
31	RP11-3010677	WASHER D. 12,5X30X3
32	RP11-2-00158	LOW NUT M 12
33	RP11-4209740	O-RING 4250
34	RP11-4217860	GASKET WITH FLANGE D.70
36	RP11-4-119855	CYLINDER FRONT FLANGE D.70
37	RP11-3-00477	STRAIGHT MALE ADAPTOR G1/8 T.8
38	RP11-4220637	LIPPED GASKET 20X26X3,6
39	RP11-4-401745	SHAFT FOR CYLINDER D.70
40	RP11-2202349	SET OF GASKET CYLINDER D.70
41	RP11-2-03354	WASHER FOR CHEESE SCREW M12
42	RP11-2-00025	RETAINING RING FOR SHAFT D.12
43	RP11-3321212	CYLINDER REAR PROTECTION COVER
44	RP11-4-403902	RILSAN HOSE 8-6 L.350
45	RP11-5-491120	COMPLETE SELF-CENTERING CHUCK

TURNTABLE GP VERSION



[RETURNS TO OVERALL](#)

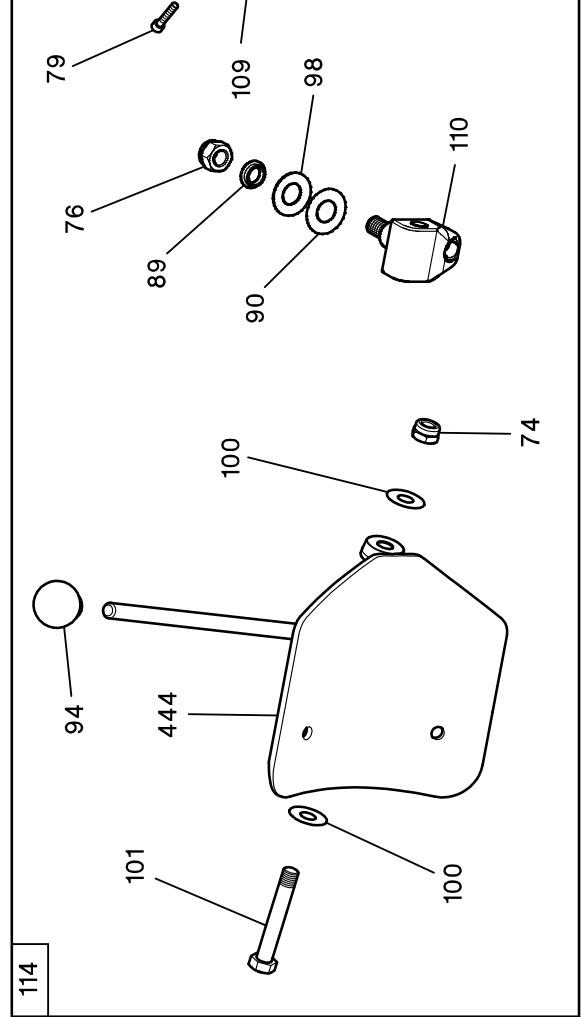
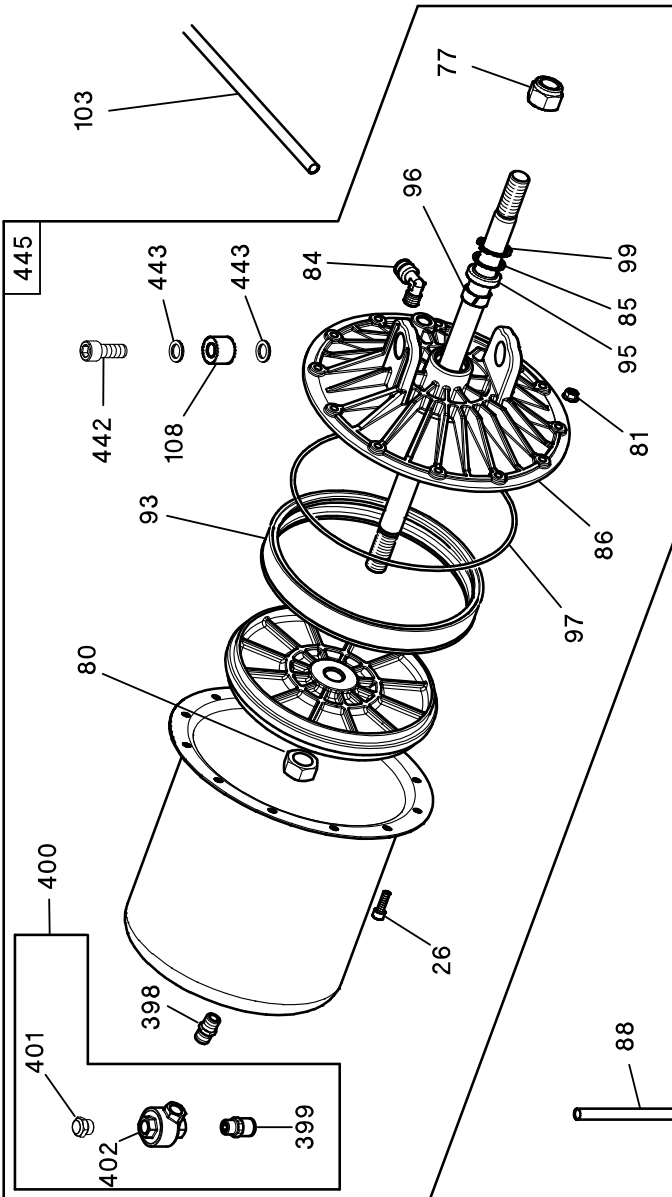
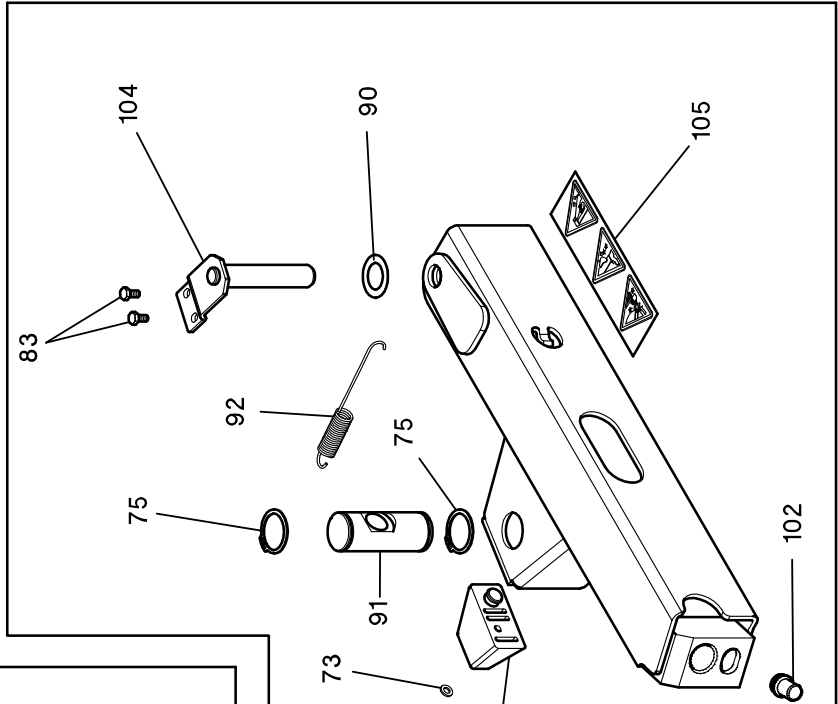
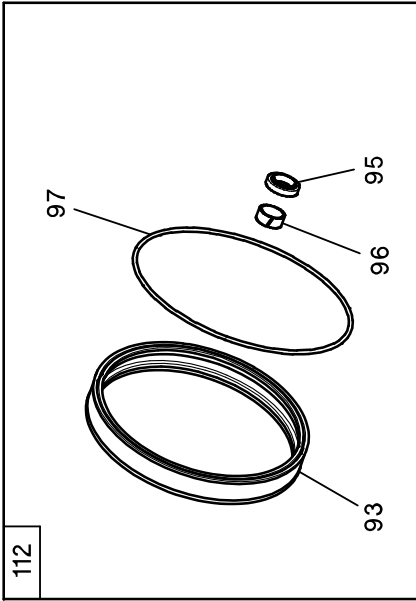
TCX54 Tire Changer

REFER TO NEXT SHEET FOR PARTS DESCRIPTION LISTING

Index No.	Part Number	Description
1	RP11-2-00025	RETAINING RING FOR SHAFT D.12
2	RP11-2-00310	SOCKET HEAD CAP SCREW M6X20
3	RP11-2-02519	RETAINING RING FOR SHAFT D.72
4	RP11-5-491080	SET OF HOSES GUIDE (x1 tire changer)
5	RP11-2-03354	WASHER FOR CHEESE SCREW M12
6	RP11-2-03329	HEXAGON HEAD CAP SCREW M12X100
7	RP11-2-71441	HEX.HEAD CAP SCREW M16X1,5X40
8	RP11-2-71921	SPRING-TYPE STRAIGHT PIN D5X14
9	RP11-2-00158	LOW NUT M 12
13	RP11-2201587	ELBOW MALE ADAPTOR G1/8 T.8
14	RP11-2202349	SET OF GASKET CYLINDER D.70
15	RP11-3-00025	TEE CONNECTOR T.8
16	RP11-3-00477	STRAIGHT MALE ADAPTOR G1/8 T.8
17	RP11-3008225	CLAMPING JAW
18	RP11-3010581	WASHER D.75X97,5X0,5
19	RP11-3010677	WASHER D. 12,5X30X3
20	RP11-4-119855	CYLINDER FRONT FLANGE D.70
21	RP11-4-119854	CYLINDER REAR FLANGE D.70
22	RP11-3020804	CASING CYLINDER D. 70
23	RP11-3021213	COVER PLATE
24	RP11-3094668	TURNTABLE WASHER
25	RP11-3308152	TURNTABLE CAP

Index No.	Part Number	Description
26	RP11-3321211	CYLINDER FRONT COVER
27	RP11-3321212	CYLINDER REAR PROTECTION COVER
28	RP11-4-116066	TURNTABLE 24"
29	RP11-4-401685	SLIDING GUIDE WITH PIN
30	RP11-4-401686	SLIDING GUIDE WITH PIN
31	RP11-4-401688	SLIDING GUIDE
32	RP11-4-401733	BUSH D.12X18X24,5
33	RP11-4-401734	SPACER D.18X24X6,5
34	RP11-4-401735	SPACER D.18X24X5,5
35	RP11-4-401745	SHAFT FOR CYLINDER D.70
36	RP11-4-401988	POLYURETHAN SPIRAL HOSE T8-5
37	RP11-4-401998	RILSAN HOSE D.8-6 L.62
38	RP11-4-402546	POLYURETAN SPIRAL HOSE 10-6,5
39	RP11-4-403902	RILSAN HOSE 8-6 L.350
42	RP11-4209740	O-RING 4250
43	RP11-4217860	GASKET WITH FLANGE D.70
44	RP11-4220637	LIPPED GASKET 20X26X3,6
45	RP11-5-400185	SLIDE WITH UNION (red spotted indent)
46	RP11-5-400428	CONTROL PLATE
47	RP11-5-491078	COMPLETE CYLINDER D.70X20X355
48	RP11-5-491079	COMPLETE SELF-CENTERING CHUCK

BEAD BREAKER



[RETURNS TO OVERALL](#)

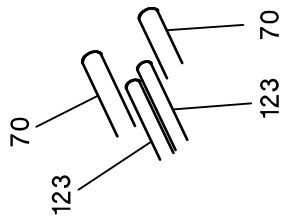
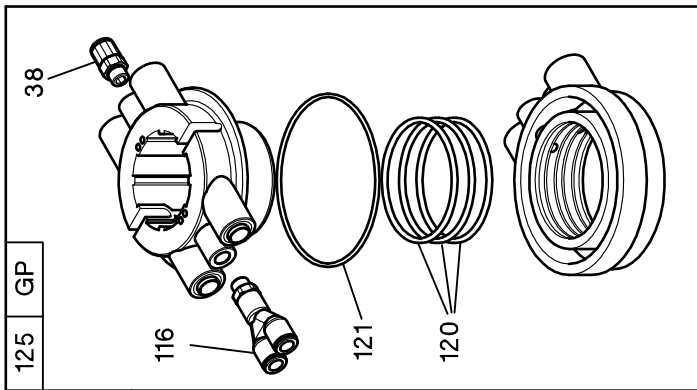
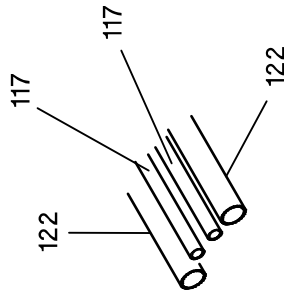
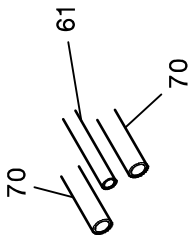
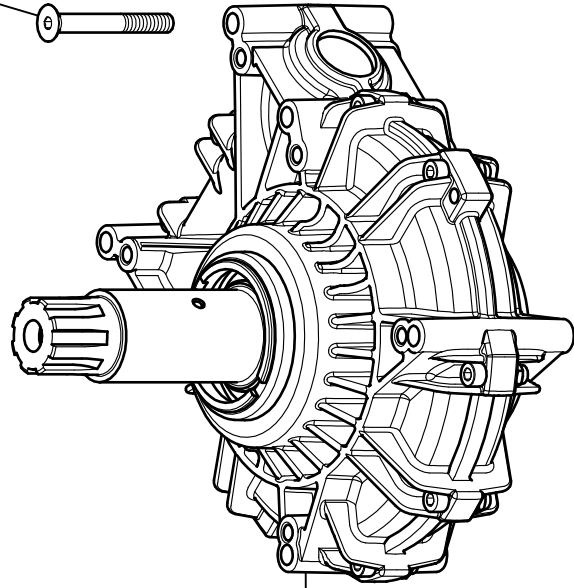
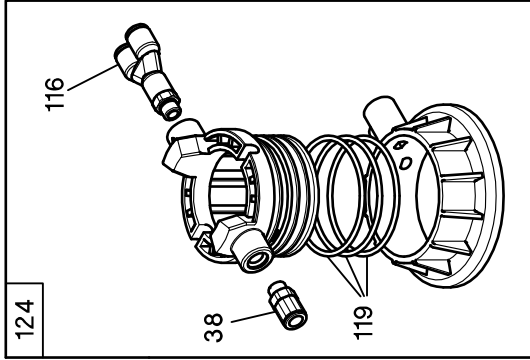
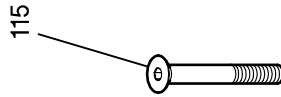
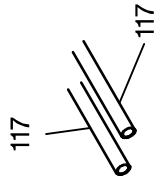
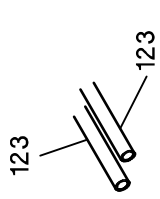
TCX54 Tire Changer

REFER TO NEXT SHEET FOR PARTS DESCRIPTION LISTING

Index No.	Part Number	Description
26	RP11-2-00310	SOCKET HEAD CAP SCREW M6X20
73	RP11-2-00211	WASHER FOR HEX CAP SCREW M6
74	RP11-2-01106	NUT WITH POLYAMIDE RING M14
75	RP11-2-01139	RETAINING RING FOR SHAFT D.35
76	RP11-2-01163	NUT WITH POLYAMIDE RING M16
77	RP11-2-71527	SELF-LOCKING NUT M 20X1,5
79	RP11-2-00863	SOCKET HEAD CAP SCREW M6X30
80	RP11-2-02534	NUT M18X1,5
81	RP11-2-02795	NUT WITH FLANGE ISO4161 M6
83	RP11-2-00360	HEXAGON HEAD CAP SCREW M6X12
84	RP11-3-00517	ORIENTING ELBOW FITTING 1/4 10
85	RP11-3010912	WASHER 24X29,5X0,5
86	RP11-3013644C	CYLINDER FLANGE D.200
88	RP11-3015796	RILSAN HOSE D.10-8 L.1100
89	RP11-3016999	HUB SPACER
90	RP11-3017251	WASHER 20X42X0,5
91	RP11-3018147	SWINING PIN
92	RP11-3020141	TENSION SPRING
93	RP11-3-02042	GASKET D. 200
94	RP11-3305242	PLASTIC BALL KNOB
95	RP11-4206114	LIPPED GASKET NSW 20-30-6
96	RP11-4206523	WEAR RING FOR ROD WRI-20
97	RP11-4213667	O-RING 4775 (3.53x196.4)

Index No.	Part Number	Description
98	RP11-4217252	CONICAL SPRING WASHER 40X20X2
99	RP11-4300414	RETAINING RING FOR BORE D.30
100	RP11-4-400510	WASHER 14,5X35X0,3
101	RP11-4-401323	SHOVEL PIVOT
102	RP11-4-401902	SPELLBINDER PIN
103	RP11-4-402011	RILSAN HOSE D.10-8 L.1400
104	RP11-4-406056	BEAD BREAKER FULCRUM PIN
105	RP11-4-402361	DECAL WARNING BEAD BREAKER ARM
108	RP11-4-403808	BEAD BREAKER BUSH
109	RP11-4-403926	BEAD BREAKER STROKE END
110	RP11-4-404708	BLADE HUB
112	RP11-5-490511	SET OF GASKET CYLINDER D. 200
114	RP11-5-107174	COMPLETE BEAD BREAKER ARM
398	RP11-3-00141	NIPPLE G1/4
399	RP11-3-00479	STRAIGHT MALE ADAPTOR G1/4 T10
400	RP11-5-491087	QUICK DISCHARGE KIT
401	RP11-3-90065	SILENCER G1/4
402	RP11-3-00317	VALVE G1/4"
442	RP11-2-80026	SOCKET HEAD CAP SCREW M12X35
443	RP11-3-90241	NORD-LOCK NL12 WASHER
444	RP11-4-116781	BLADE WITH KNOB
445	RP11-5-490556	CYLINDER D. 200X150 WITH BUSH

GEARBOX



[RETURNS TO OVERALL](#)

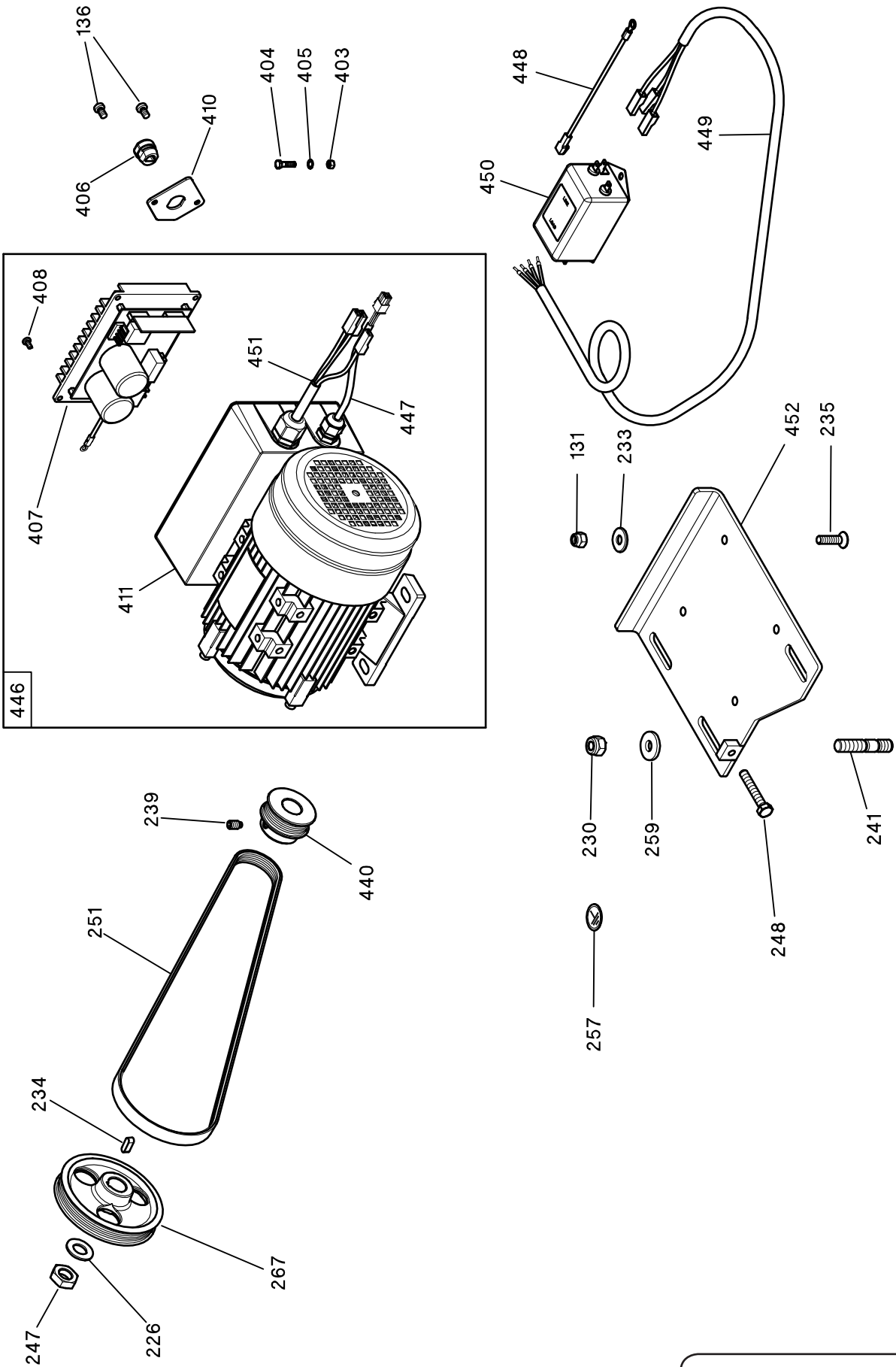
TCX54 Tire Changer

REFER TO NEXT SHEET FOR PARTS DESCRIPTION LISTING

Index No.	Part Number	Description
38	RP11-3-00477	STRAIGHT MALE ADAPTOR G1/8 T.8
61	RP11-4-401988	POLYURETHAN SPIRAL HOSE T8-5
70	RP11-4-402546	POLYURETAN SPIRAL HOSE 10-6,5
115	RP11-2-02974	SOCKET COUNTERSUNK SCREW M10X80
116	RP11-3-00175	Y MALE ADAPTOR G1/8 T8
117	RP11-3009007	RILSAN HOSE D.8-6 L.1300
118	RP11-3010107	SCREW FOR ROTATING UNION
119	RP11-4207833	O-RING 3237 (2.62x60)

Index No.	Part Number	Description
120	RP11-4210092	O-RING 3250 (2.62x63.17)
121	RP11-4210093	O-RING 90X2 DIN3770
122	RP11-4-403819	RILSAN HOSE D. 14-11 L.1000
123	RP11-4-403902	RILSAN HOSE 8-6 L.350
124	RP11-5-400648	COMPLETE ROTATING UNION
125	RP11-5-400664	COMPLETE ROTATING UNION (GP)
126	RP11-5-101182	GEARBOX

ELECTRIC MOTOR



[RETURNS TO OVERALL](#)

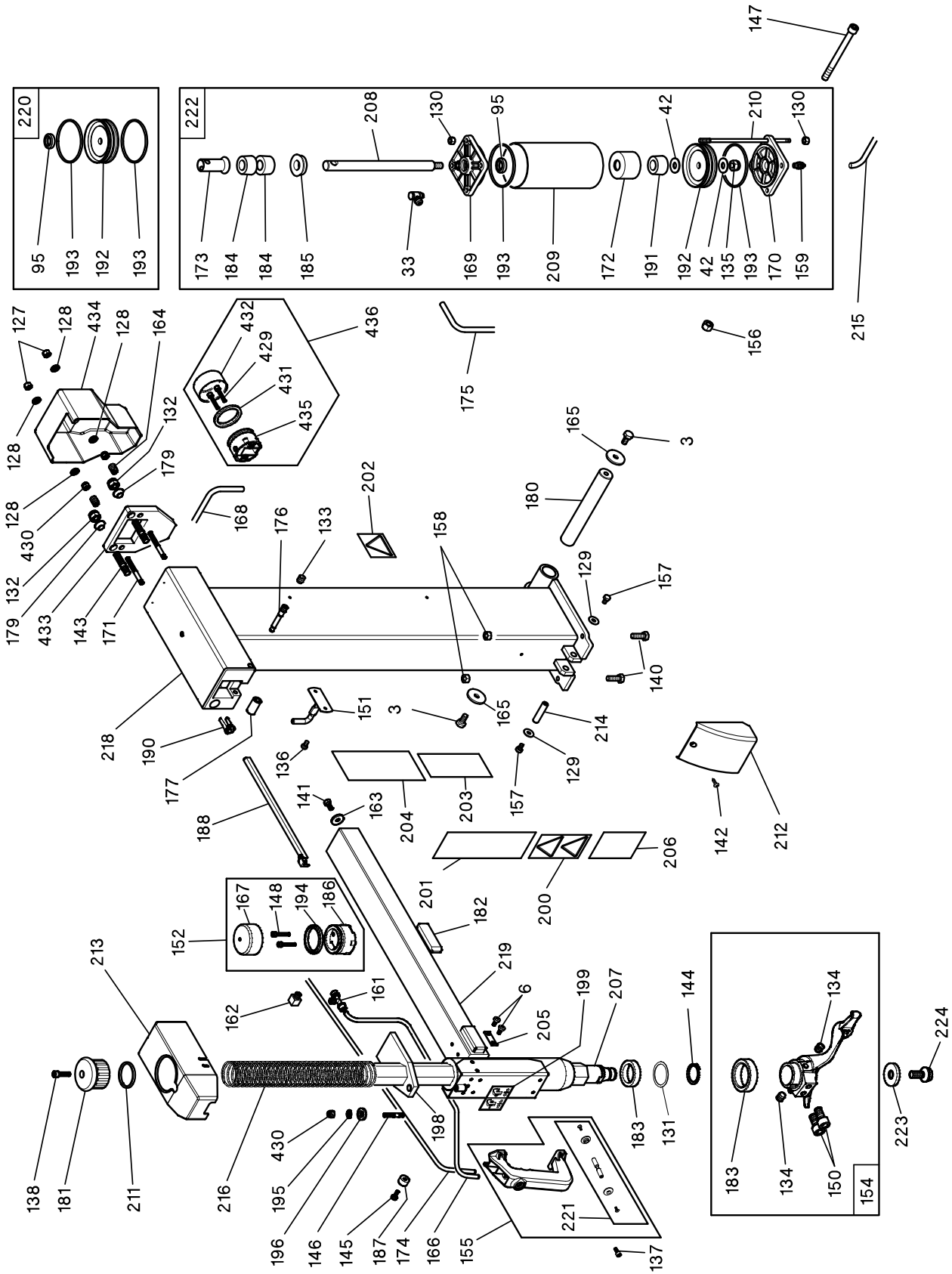
TCX54 Tire Changer

REFER TO NEXT SHEET FOR PARTS DESCRIPTION LISTING

Index No.	Part Number	Description
131	RP11-2-01137	NUT WITH POLYAMIDE RING M8
136	RP11-2-02362	CROSS PAN HEAD SCREW M6X10
226	RP11-2-00215	WASHER FOR HEX CAP SCREW M14
230	RP11-2-01019	NUT WITH POLYAMIDE RING M10
233	RP11-2-01299	WASHER D.9X24X2
234	RP11-2-01950	PARALLEL KEY 6X6X18
235	RP11-2-71353	SCREW M 8X30
239	RP11-2-02561	SOCKET SET SCREW M8X14
241	RP11-2-03478	SHORT END STUD M10X25
247	RP11-2-00941	HEXAGON THIN NUT M14
248	RP11-2-00868	HEXAGON HEAD CAP SCREW M8X50
251	RP11-3-02061	POLY-V BELT
257	RP11-4207270	EARTH LABEL
259	RP11-4300590	WASHER D.10X28X4
267	RP11-4-403630	GEAR BOX PULLEY POLY-V
403	RP11-2-00144	NUT M 5

Index No.	Part Number	Description
404	RP11-2-00721	HEXAGON HEAD CAP SCREW M5X14
405	RP11-2-71546	TOOTH WASHER D.5
406	RP11-3-01908	CABLE HOLDER
407	RP11-4-405602	INVERTER PCB 230V + DISSIPATOR
408	RP11-2-91647	CROSS PAN HEAD SCREW M5X12
410	RP11-4-403072	CABLE HOLDER PLATE
411	RP11-4-405857	ELECTRIC MOTOR W/O INVERTER
440	RP11-4-401658	MOTOR-INVERTER PULLEY J6
446	RP11-3-00841	COMPLETE ELECTRIC MOTOR
447	RP11-4-101692	ELECTRIC MOTOR CONTROL CABLE
448	RP11-4-103316	CABLE
449	RP11-4-109893	FEEDING CABLE
450	RP11-4-109914	FILTER
451	RP11-4-113513	FEEDING CABLE
452	RP11-4-407494	MOTOR SUPPORT PLATE

TILTING COLUMN



[RETURNS TO OVERALL](#)

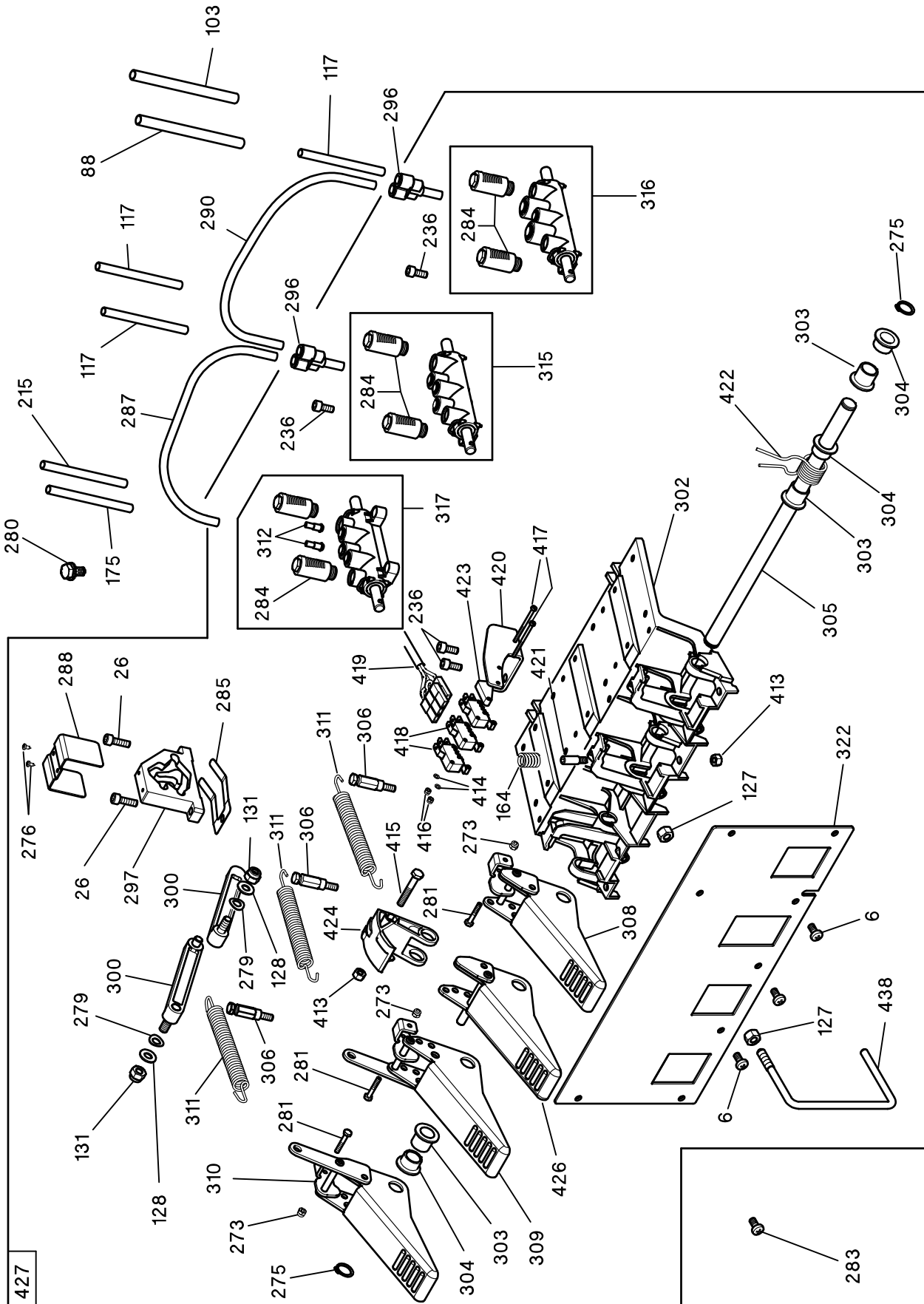
TCX54 Tire Changer

REFER TO NEXT SHEET FOR PARTS DESCRIPTION LISTING

Index No.	Part Number	Description
3	RP11-2-00379	HEXAGON HEAD CAP SCREW M10X20
6	RP11-2-02755	CROSS PAN HEAD SCREW M6X12
33	RP11-2201587	ELBOW MALE ADAPTOR G1/8 T.8
42	RP11-3010677	WASHER D. 12,5X30X3
95	RP11-4206114	LIPPED GASKET NSW 20-30-6
127	RP11-2-00156	NUT M8
128	RP11-2-00212	WASHER FOR HEX CAP SCREW M8
129	RP11-2-00679	WASHER D.6X18X1,5
130	RP11-2-00151	NUT M8
131	RP11-2-03659	WASHER D.36X45X0,5
132	RP11-2-01021	NUT WITH POLYAMIDE RING M12
133	RP11-2-01040	SOCKET SET SCREW M12X12
134	RP11-2-01146	SOCKET SET SCREW M10X10
135	RP11-2-01276	NUT WITH POLYAMIDE RING M12
136	RP11-2-02362	CROSS PAN HEAD SCREW M6X10
137	RP11-2-00853	SOCKET HEAD CAP SCREW M5X12
138	RP11-2-00322	SOCKET HEAD CAP SCREW M8X30
140	RP11-2-01037	HEXAGON HEAD CAP SCREW M10X30
141	RP11-2-00372	HEXAGON HEAD CAP SCREW M8X16
142	RP11-2-02411	SELF-TAPPING SCREW D.4,8X16
143	RP11-2-02797	MEDIUM END STUD M12X40
144	RP11-2-02976	RETAINING RING FOR SHAFT D.36
145	RP11-2-03043	CROSS PAN HEAD SCREW M6X25
146	RP11-2-03364	MEDIUM END STUD M8X35
147	RP11-2-02583	SOCKET HEAD CAP SCREW M12X140
148	RP11-2-01266	SOCKET HEAD CAP SCREW M6X35
150	RP11-2-02586	SOCKET HEAD CAP SCREW M10X20
151	RP11-2111228	HOOK FOR AIRLINE GAUGE
152	RP11-2200641	COMPLETE CYLINDER D.60
154	RP11-5-104797	COMPLETE MOUNTING HEAD
155	RP11-2312380	CONTROL HANDLE
156	RP11-2-00114	HIGH NUT M 12
157	RP11-2-00359	HEXAGON HEAD CAP SCREW M6X10
158	RP11-2-00152	NUT M10
159	RP11-3-00039	STRAIGHT MALE ADAPTOR 1/8 T8-6
161	RP11-3-00119	TEE MALE ADAPTOR G1/8 T.6-4
162	RP11-3-00228	ELBOW MALE ADAPTOR G1/8 M-F
163	RP11-3005194	WASHER D. 8,1X26,5X4
164	RP11-3005803	HELICAL COMPRESSION SPRING
165	RP11-3006359	WASHER 10.5X40X5
166	RP11-3007125	RILSAN HOSE D.6-4 L. 200
167	RP11-3007871	CYLINDER D. 60
168	RP11-3008878	RILSAN HOSE D.6-4 L.1400
169	RP11-3009469	CYLINDER FRONT FLANGE D.90
170	RP11-3009470	CYLINDER REAR FLANGE D.90
171	RP11-3010469	VERTICAL LOCKING REGULATOR
172	RP11-3011009	STROKE END FOR CYLINDER
173	RP11-3011013	SHOCK ABSORBER SUPPORT
174	RP11-3011973	RILSAN HOSE D.6-4 L. 2200
175	RP11-3015551	RILSAN HOSE D.8-6 L.1600
176	RP11-3019266	ECCENTRIC ROLLER
177	RP11-3019267	HORIZONTAL ARM ROLLER

Index No.	Part Number	Description
179	RP11-3093822	HORIZONTAL LOCKING CONE
180	RP11-3094911	TILTING COLUMN PIN
181	RP11-3305161	KNOB
182	RP11-3306762	HORIZONTAL ARM SHOCK ABSORBER
183	RP11-3309545	MOUNTING HEAD SHOCK ABSORBER
184	RP11-3311010	SHOCK ABSORBER
185	RP11-3311571	SHOCK ABSORBER RING SUPPORT
186	RP11-443077	PISTON D. 60
187	RP11-3313766	SPACER COVER H.18
188	RP11-3318138	HOSES GUIDE
190	RP11-3319268	HOSES GUIDE BUSH
191	RP11-3319483	SHOCK ABSORBER
192	RP11-4209463	GASKET WHIT FLANGE D.90
193	RP11-4209464	O-RING 4325 (3.53x82.14)
194	RP11-4212240	GASKET DE 237
195	RP11-4218947	SPHERICAL WASHER TYPE C D.8
196	RP11-4218948	CONICAL SEAT TYPE G D.8
198	RP11-4-405783	VERTICAL LOCKING PLATE
199	RP11-4-402038	DECAL INSTRUCTION HANDLE VALVE
200	RP11-4-402352	DECAL, WARNING HANDS
201	RP11-4-402354	DECAL, WARNING READ MANUAL
202	RP11-4-402357	DECAL, WARNING
203	RP11-4-402358	DECAL, WARNING DISCONNECT HOSE
204	RP11-4-402362	DECAL, WARNING PRESSURE LIMIT
205	RP11-4-402374	SPACER COVER H.5
206	RP11-4-402825	DECAL, WARNING
207	RP11-4-403555	HEXAGONAL SHAFT CH41
208	RP11-4-403674	SHAFT FOR CYLINDER D.90
209	RP11-4-403683	CASING D.90
210	RP11-4-403684	CYLINDER TIE ROD M8
211	RP11-4-403723	SPACER D.47.5X53.5X5
212	RP11-4-403756	TILTING COLUMN PROTECTION
213	RP11-4-403769	VERTICAL LOCKING COVER
214	RP11-4-403950	PIN
215	RP11-4-404379	RILSAN HOSE D.8-6 L.1400
216	RP11-4-406978	HELICAL COMPRESSION SPRING
218	RP11-4-120566	TILTING COLUMN
219	RP11-4-120567	HORIZONTAL ARM
220	RP11-5-490272	SET OF GASKET CYLINDER D.90
221	RP11-5-490488	PUSH-BUTTON REPLACING KIT
222	RP11-5-490883	CYLINDER FOR TILTING COLUMN
223	RP11-9350194	MOUNTING HEAD FIXING WASHER
224	RP11-9350197	MOUNTING HEAD FIXING SCREW
429	RP11-2-00312	SOCKET HEAD CAP SCREW M6X25
430	RP11-2-01137	NUT WITH POLYAMIDE RING M8
431	RP11-3-02060	GASKET 70X60X5.5
432	RP11-4-404498	CYLINDER D.70
433	RP11-4-404707	HORIZONTAL LOCKING PLATE
434	RP11-4-404721	HORIZONTAL LOCKING COVER
435	RP11-4-404781	PISTON D.70
436	RP11-5-491113	COMPLETE CYLINDER D.70

PEDAL SYSTEM



[RETURNS TO OVERALL](#)

TCX54 Tire Changer

REFER TO NEXT SHEET FOR PARTS DESCRIPTION LISTING

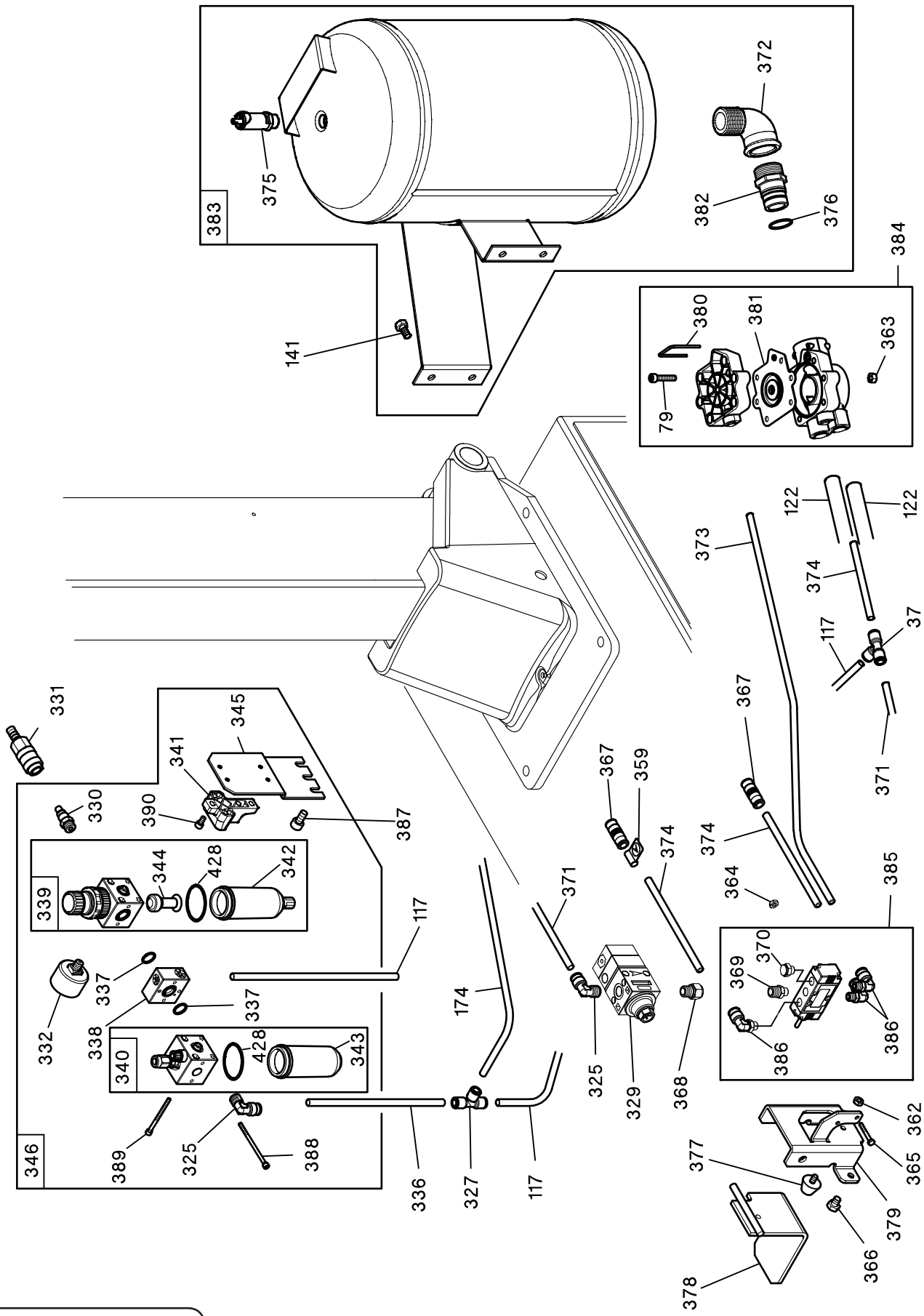
Index No.	Part Number	Description
6	RP11-2-02755	CROSS PAN HEAD SCREW M6X12
26	RP11-2-00310	SOCKET HEAD CAP SCREW M6X20
88	RP11-3015796	RILSAN HOSE D.10-8 L.1100
103	RP11-4-402011	RILSAN HOSE D.10-8 L.1400
117	RP11-3009007	RILSAN HOSE D.8-6 L.1300
127	RP11-2-00112	NUT M8
128	RP11-2-00212	WASHER FOR HEX CAP SCREW M8
131	RP11-2-01020	NUT WITH POLYAMIDE RING M8
164	RP11-3005803	HELICAL COMPRESSION SPRING
175	RP11-3015551	RILSAN HOSE D.8-6 L.1600
215	RP11-4-404379	RILSAN HOSE D.8-6 L.1400
236	RP11-2-00728	SOCKET HEAD CAP SCREW M6X14
273	RP11-2-01018	NUT WITH POLYAMIDE RING M4
275	RP11-2-01122	RETAINING RING FOR SHAFT D.15
276	RP11-2-01272	SELF-TAPPING SCREW D.2,9X9,5
279	RP11-2-02248	UNDULATED SPRING WASHER D.8
280	RP11-2-03532	HEXAGON FLANGE BOLTS M8X20
281	RP11-2-00397	HEXAGON HEAD CAP SCREW M4X25
283	RP11-2-02364	CROSS PAN HEAD SCREW M6X16
284	RP11-3-00182	SILENCER G.1/4
285	RP11-3006149	FORK LEAF SPRING
287	RP11-3009182	RILSAN HOSE D.8-6 L.240
288	RP11-3009605	CONNECTING ROD GUIDE BRACKET
290	RP11-3014052	RILSAN HOSE D.8-6 L.300
296	RP11-3-02192	Y MALE ADAPTOR C8-T8
297	RP11-3306148	TRIP CAM
300	RP11-4-403659	CAM CONNECTING ROD
302	RP11-4-403686	PEDAL BASE

Index No.	Part Number	Description
303	RP11-4-403702	SPRING BUSH H.18
304	RP11-4-403703	SPRING BUSH H.13
305	RP11-4-403715	PEDAL PIN
306	RP11-4-403734	SPECIAL SCREW
308	RP11-4-403740	BEAD-BREAKER PEDAL
309	RP11-4-403774	LEFT PEDAL
310	RP11-4-403777	RIGTH PEDAL
311	RP11-4-403790	TENSION SPRING
312	RP11-4-406414	NARROWING PIECE D.1,40
315	RP11-5-400951	COMPLETE RIGHT VALVE T.8
316	RP11-5-400953	COMPLETE RIGHT VALVE T.10
317	RP11-5-490749	VALVE WITH NARROWING PIECES
322	RP11-4-120570	PEDAL FRONT PLATE
413	RP11-2-00111	HIGH NUT M6
414	RP11-2-00208	WASHER FOR HEX CAP SCREW M3
415	RP11-2-00366	HEXAGON HEAD CAP SCREW M6X40
416	RP11-2-01017	NUT WITH POLYAMIDE RING M3
417	RP11-2-03355	SOCKET HEAD CAP SCREW M3X45
418	RP11-3-01451	MICROSWITCH
419	RP11-4-402009	MICROSWITCH CABLE
420	RP11-4-131019	MICROSWITCHES SUPPORT
421	RP11-4-403732	SPRING PIN
422	RP11-4-403791	HELICAL TORSION SPRING
423	RP11-4-401717	SPACER FOR MICROSWITCH SUPPORT
424	RP11-4-403658	MICROSWICTHES DRIVE CAM
426	RP11-4-403778	RIGHT MICROSWITCH PEDAL
427	RP11-5-107110	COMPLETE PEDAL SYSTEM
438	RP11-4-404435	PEDALS SEPARATOR

Index No.	Part Number	Description
117	RP11-3009007	RILSAN HOSE D.8-6 L.1300
174	RP11-3011973	RILSAN HOSE D.6-4 L. 2200
225	RP11-2-71506	NUT M4
324	RP11-2-71762	CROSS PAN HEAD SCREW M4X45
325	RP11-3-00060	ORIENTING ELBOW FITTING 1/4 T8
326	RP11-3-00108	ELBOW MALE ADAPTOR G1/4 T.8-6
327	RP11-3-02563	TEE CONNECTOR T.8/6-T6/4
328	RP11-3-00202	BAYONET CONNECTION
329	RP11-3-00389	QUICK INFLATING VALVE G1/4
330	RP11-3-00410	QUICK MALE UNION
331	RP11-3-00411	BALL VALVE (D.10,5)
332	RP11-3-00488	MANOMETER G1/8 0-12BAR
334	RP11-3010470	RILSAN HOSE D.8-6 L.500
336	RP11-3093866	RILSAN HOSE D.8-6 L.400
337	RP11-4216117	O-RING 2056 (1,78X14)

Index No.	Part Number	Description
338	RP11-4220002	CONNECTING BLOCK
339	RP11-4220003	COMPLETE FILTER UNIT
340	RP11-4220004	COMPLETE LUBRICATOR UNIT
341	RP11-4220005	FILTER AND LUBRICATOR HOLDER
342	RP11-4220006	FILTER TANK
343	RP11-4220007	LUBRICATOR TANK
344	RP11-4220008	FILTER
345	RP11-4-403687	PNEUMATIC DEVICE SUPPORT
346	RP11-5-400977	FILTER/REGULATOR+LUBRICATOR
387	RP11-2-71333	SCREW M 8X12
388	RP11-2-03033	SOCKET HEAD CAP SCREW M4X70
389	RP11-2-03034	SOCKET HEAD CAP SCREW M4X55
390	RP11-2-00891	SOCKET HEAD CAP SCREW M5X10
428	RP11-4212295	O-RING 2125 (1,78X31,47)

FILTER-LUBRICATOR GP VERSION

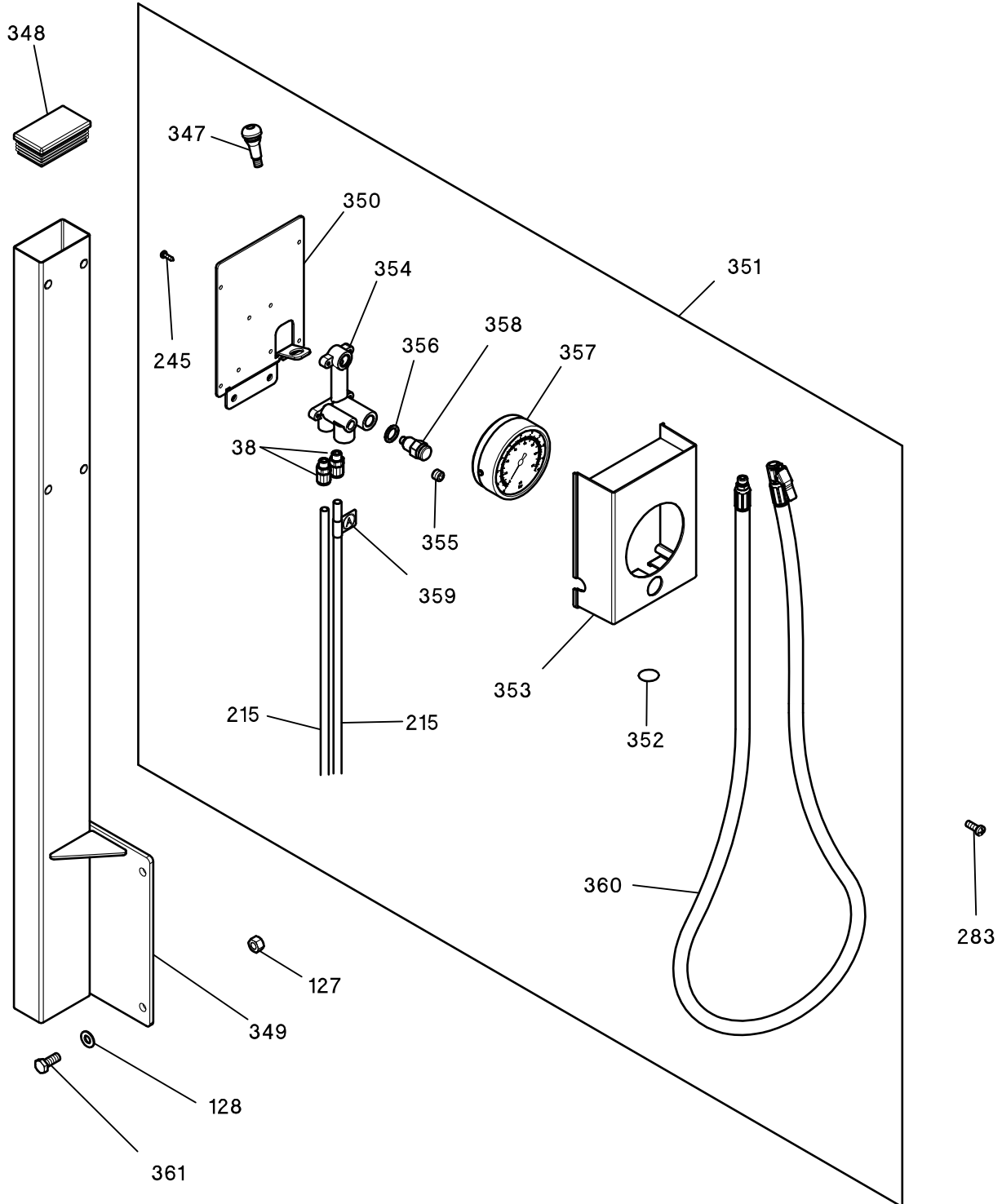


[RETURNS TO OVERALL](#)

Index No.	Part Number	Description
37	RP11-3-00025	TEE CONNECTOR T.8
79	RP11-2-00863	SOCKET HEAD CAP SCREW M6X30
117	RP11-3009007	RILSAN HOSE D.8-6 L.1300
122	RP11-4-403819	RILSAN HOSE D. 14-11 L.1000
141	RP11-2-00372	HEXAGON HEAD CAP SCREW M8X16
174	RP11-3011973	RILSAN HOSE D.6-4 L. 2200
325	RP11-3-00060	ORIENTING ELBOW FITTING 1/4 T8
327	RP11-3-00115	TEE CONNECTOR T.8/6-T6/4
329	RP11-3-00389	QUICK INFLATING VALVE G1/4
330	RP11-3-00410	QUICK MALE UNION
331	RP11-3-00411	BALL VALVE (D.10,5)
332	RP11-3-00488	MANOMETER G1/8 0-12BAR
336	RP11-3093866	RILSAN HOSE D.8-6 L.400
337	RP11-4216117	O-RING 2056 (1,78X14)
338	RP11-4220002	CONNECTING BLOCK
339	RP11-4220003	COMPLETE FILTER UNIT
340	RP11-4220004	COMPLETE LUBRICATOR UNIT
341	RP11-4220005	FILTER AND LUBRICATOR HOLDER
342	RP11-4220006	FILTER TANK
343	RP11-4220007	LUBRICATOR TANK
344	RP11-4220008	FILTER
345	RP11-4-403687	PNEUMATIC DEVICE SUPPORT
346	RP11-5-400977	FILTER/REGULATOR+LUBRICATOR
359	RP11-3015825	DECAL, A-A HOSES CONNECTION
362	RP11-2-00155	LOW NUT M6
363	RP11-2-01979	NUT WITH POLYAMIDE RING M6
364	RP11-2-71516	LOW NUT M4

Index No.	Part Number	Description
365	RP11-2-71381	HEXAGON HEAD CAP SCREW M4X30
366	RP11-2-01267	HEXAGON HEAD CAP SCREW M8X12
367	RP11-3-00016	STRAIGHT CONNECTOR T.8
368	RP11-3-00082	REDUCER G1/4 M-F
369	RP11-3-00135	REDUCING NIPPLE G1/8-G1/4
370	RP11-3-00181	SILENCER G.1/8
371	RP11-3005164	RILSAN HOSE D.8-6 L.260
372	RP11-3-00961	L-UNION 1"
373	RP11-3010923	RILSAN HOSE D.8-6 L.800
374	RP11-3015501	RILSAN HOSE D.8-6 L.600
375	RP11-3-01573	SAFETY VALVE G1/4"
376	RP11-3-90168	O-RING (ORM 24.4X2.0)
377	RP11-3-02148	SHOCK ABSORBER D. 23X16 M 6X12
378	RP11-4-401720	PEDAL
379	RP11-4-401726	PEDAL SUPPORT WITH STOP
380	RP11-4-403678	U FORK
381	RP11-4-403680	DIAPHRAGM
382	RP11-4-403685	MALE ADAPTER G.1
383	RP11-4-403815	COMPLETE AIR TANK 18L.
384	RP11-5-400942	COMPLETE INFLATING VALVE
385	RP11-5-490746	COMPLETE INFLATING VALVE
386	RP11-3-00059	ORIENTING ELBOW FITTING 1/8 T8
387	RP11-2-71333	SCREW M 8X12
388	RP11-2-03033	SOCKET HEAD CAP SCREW M4X70
389	RP11-2-03034	SOCKET HEAD CAP SCREW M4X55
390	RP11-2-00891	SOCKET HEAD CAP SCREW M5X10
428	RP11-4212295	O-RING 2125 (1,78X31,47)

INFLATING DEVICE



[RETURNS TO OVERALL](#)

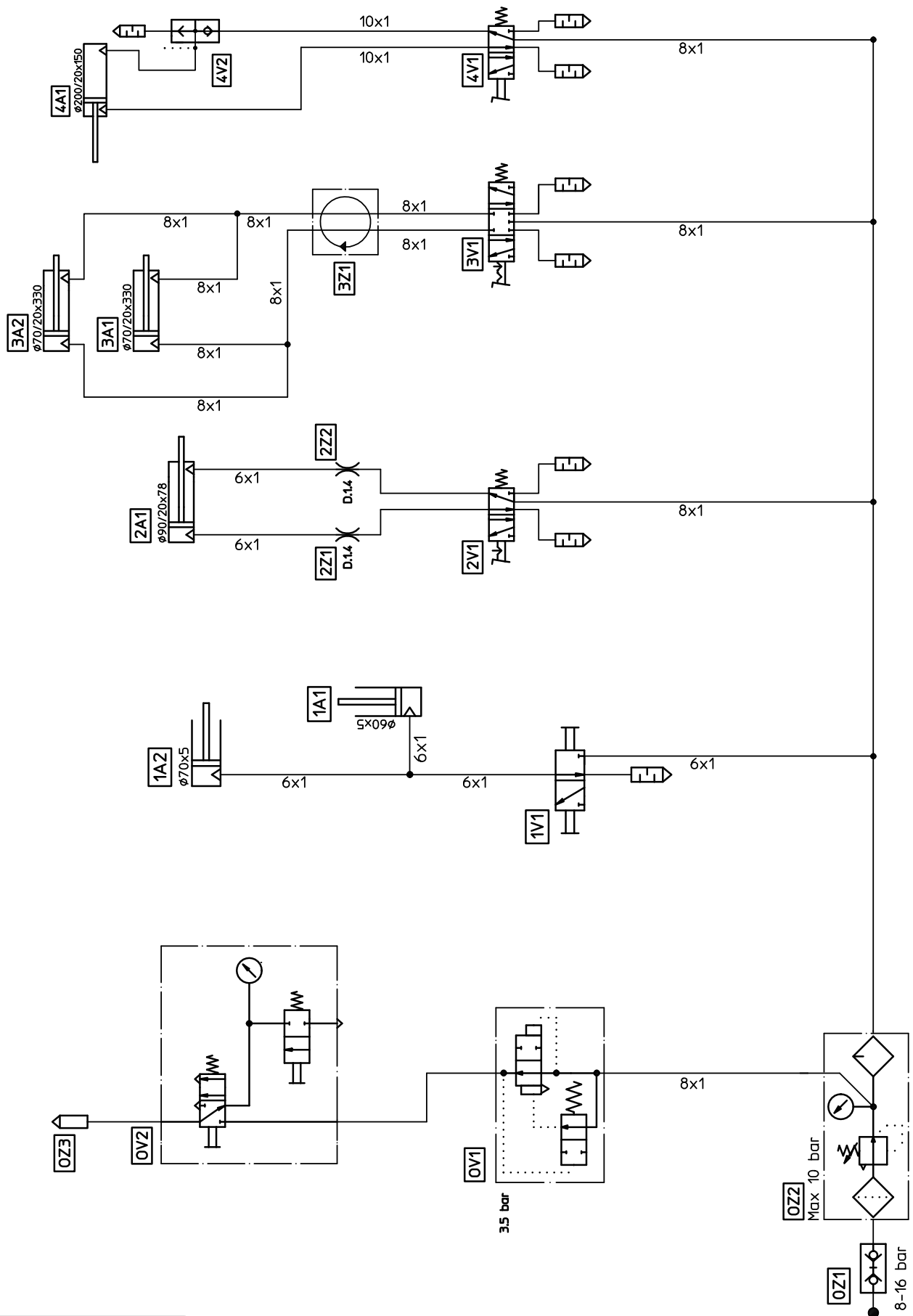
TCX54 Tire Changer

REFER TO NEXT SHEET FOR PARTS DESCRIPTION LISTING

Index No.	Part Number	Description
38	RP11-3-00477	STRAIGHT MALE ADAPTOR G1/8 T.8
127	RP11-2-00112	NUT M8
128	RP11-2-00212	WASHER FOR HEX CAP SCREW M8
215	RP11-4-404379	RILSAN HOSE D.8-6 L.1400
245	RP11-2-71491	SELF-TAPPING SCREW D.3.5X12.7
283	RP11-2-02364	CROSS PAN HEAD SCREW M6X16
347	RP11-3-01568	RUBBER CORE VALVE
348	RP11-3-90123	TERMINAL 70X40
349	RP11-5-105478	DEVICE SUPPORT
350	RP11-4-405826	BOX BASE
351	RP11-5-401610	COMPLETE INFLATING DEVICE

Index No.	Part Number	Description
352	RP11-3014074	DECAL, A
353	RP11-3315382	BOX PANEL
354	RP11-3315381	MANIFOLD
355	RP11-3-00198	MALE PLUG G1/8
356	RP11-3-00445	NYLON NOTCHED-WASHER G1/4
357	RP11-3-00490	PRESSURE GAUGE G1/4 0-10BAR
358	RP11-3012530	PUSH-BUTTON
359	RP11-3015825	DECAL, A-A HOSES CONNECTION
360	RP11-4-400208A	AIR OUTLET HOSE L.1500
361	RP11-2-00373	HEXAGON HEAD CAP SCREW M8X20

PNEUMATIC DIAGRAM



[RETURNS TO OVERALL](#)

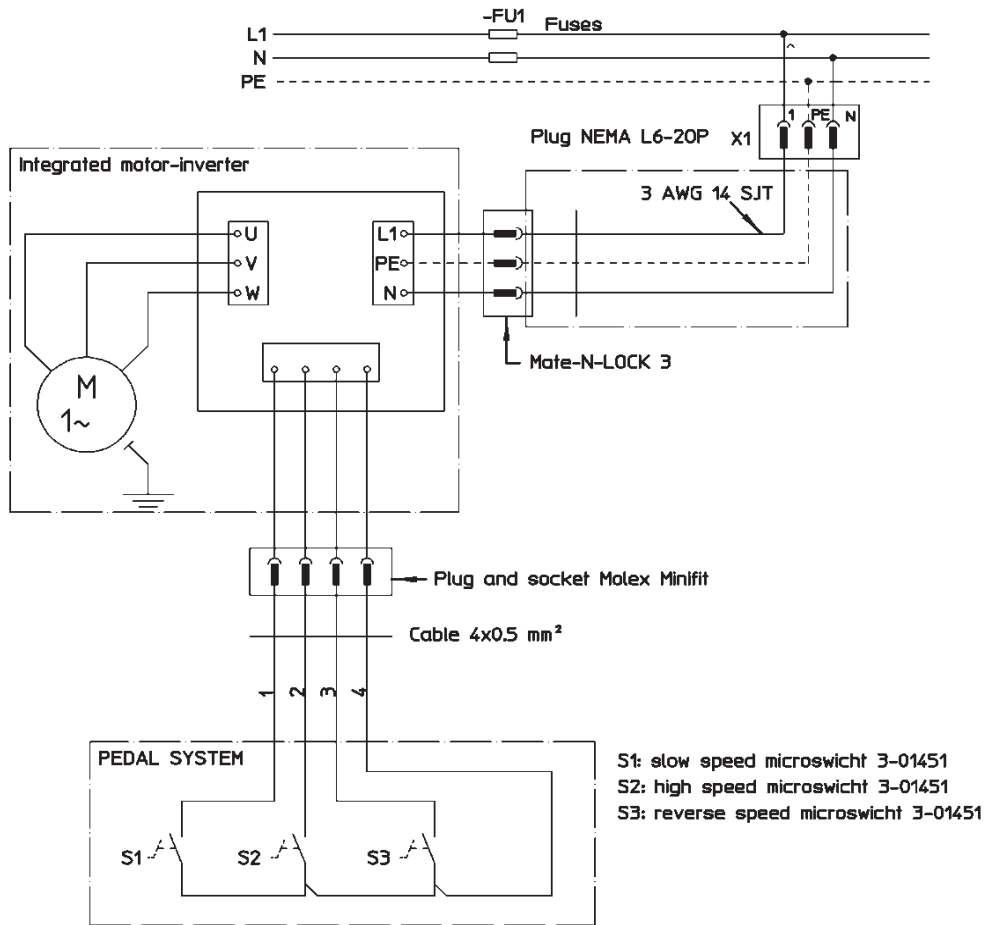
TCX54 Tire Changer

REFER TO NEXT SHEET FOR PARTS DESCRIPTION LISTING

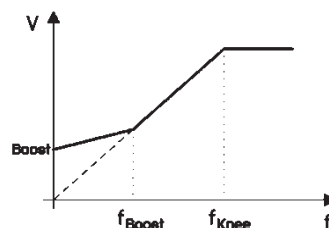
Index No.	Description
0V1	Quick inflating valve G 1/4"
0V2	Tyre inflating gun-&-gauge
0Z1	Cock
0Z2	Water separator and pressure regulator+lubricator
0Z3	Clip-on air chuck
1A1	Clamping cylinder vertical shaft
1A2	Clamping cylinder horizontal shaft
1V1	Complete control handle
2A1	Cylinder for tilting column
2V1	Complete automatic arm valve
2Z1	Throttled wpipe
2Z2	Throttled pipe
3A1	Cylinder for self-centering chuck
3A2	Cylinder for self-centering chuck
3V1	Complete self-centering chuck valve
3Z1	Complete rotating union
4A1	Cylinder for bead-breaker arm
4V1	Complete bead-breaker valve
4V2	Rapid discharge valve

Index No.	Description
0V1	Safety valve G 3/8" 160 PSI
0V2	Complete inflating valve for TCX550
0V3	Quick inflating valve G 1/4"
0V4	Inflating valve
0V5	Manifold
0Z1	Cock
0Z2	Water separator and pressure regulator+lubricator
0Z3	Air tank
0Z4	Clip-on air chuck
0Z5	Pressure gauge D.80
1A1	Clamping cylinder vertical shaft
1A2	Clamping cylinder horizontal shaft
1V1	Complete control handle
2A1	Cylinder for tilting column
2V1	Complete automatic arm valve
2Z1	Throttled pipe
2Z2	Throttled pipe
3A1	Cylinder for self-centering chuck
3A2	Cylinder for self-centering chuck
3V1	Complete self-centering chuck valve
3Z1	Complete rotating union
3Z2	Slide with nozzle and union
3Z3	Slide with nozzle and union
3Z4	Slide with nozzle and union
3Z5	Slide with nozzle and union
4A1	Cylinder for bead-breaker arm
4V1	Complete bead-breaker valve
4V2	Rapid discharge valve

WIRE DIAGRAM



SUPPLY VOLTAGE	Input Voltage 1 x 220 - 240V AC
	Input Frequency 48...62 Hz
DIGITAL INPUT	3 isolated digital input
	Voltage between com (4) and input (1,2,3) 24V DC, 10mA
ADMITTED DC VOLTAGE	Overtoltage (on DC bus) ca. 400V DC
	Undervoltage (on DC bus) ca. 185V DC
OVERTEMPERATURE FAULT	Max temperature T MAX ca. 75°C (temperature of the power module)
	Fault reset possible with T < ca. 60°C
OUTPUT CURRENT	I OUT max. 14A RMS (non continuous use, I OUT > 6.5A RMS for max t = 60s every 240s)
OVERCURRENT HANDLING	I OUT > 10A RMS B output frequency reduction to f min (*)
FAULT RESET	Done by the 'STOP' of the inverter. It's not necessary to switch off the unit.
	Overtemperature fault reset possible with T < 75°C switching off the unit for t > dt 60 s.
RAMP	Deceleration = max. 260Hz/s (regulated by the value of the DC bus)
	Acceleration = 166Hz/s
FIXED FREQUENCY	Minimum frequency f min = 60Hz (*)
	Low speed = 74Hz
	High speed = 168Hz
CHARACTERISTIC V/F	Boost 15%
	Frequency f Boost = 60Hz
	Frequency f Knee = 100Hz



[RETURNS TO OVERALL](#)