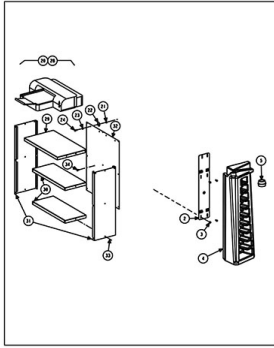
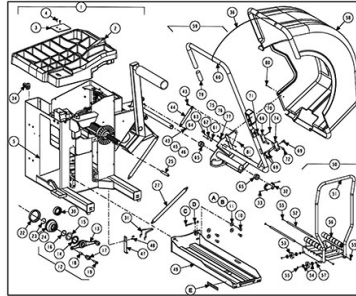


## HD ELITE SERIES BALANCER



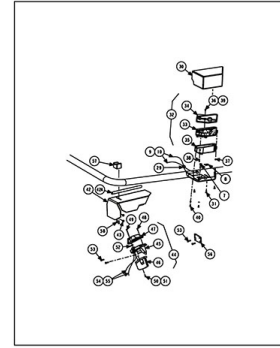
COLLET STORAGE AND PRINTER OPTION  
REFER TO NEXT SHEET FOR PARTS DESCRIPTION LISTING

**SHEET 3**



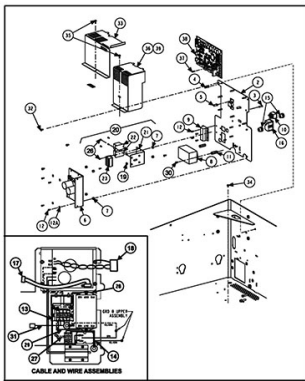
TUB, HOOD, MOUNTING, ETC.  
REFER TO NEXT SHEET FOR PARTS DESCRIPTION LISTING

**SHEET 4**  
(Continued on Sheet 5)



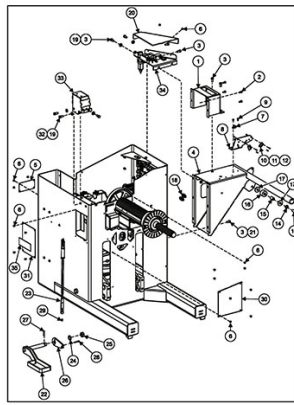
SMARTSCAN  
REFER TO NEXT SHEET FOR PARTS DESCRIPTION LISTING

**SHEET 6**



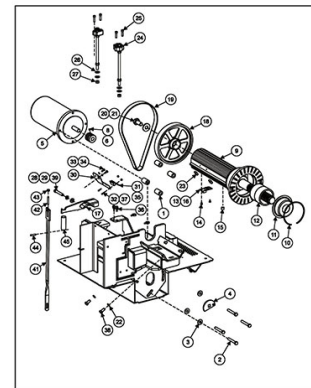
ELECTRIC PANEL  
REFER TO NEXT SHEET FOR PARTS DESCRIPTION LISTING

**SHEET 7**



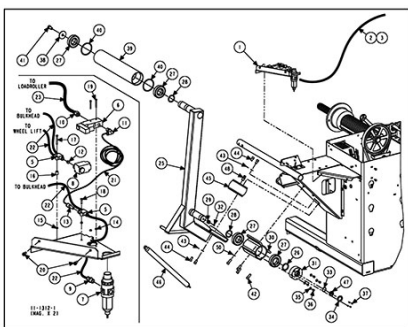
TUB, HOOD SUPPORT, ETC.  
REFER TO NEXT SHEET FOR PARTS DESCRIPTION LISTING

**SHEET 8**



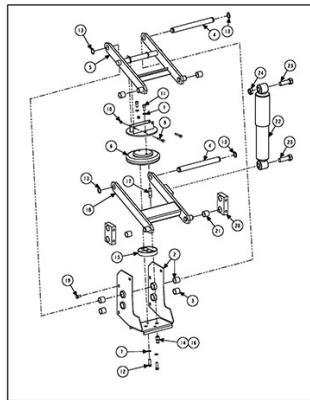
HD VIBRATION STRUCTURE  
REFER TO NEXT SHEET FOR PARTS DESCRIPTION LISTING

**SHEET 9**



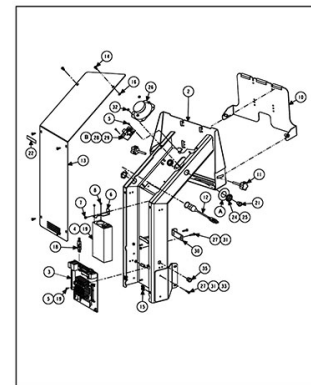
HD PINION GEARS AND LOAD ROLLERS  
REFER TO NEXT SHEET FOR PARTS DESCRIPTION LISTING

**SHEET 10**



WHEEL LIFT MECHANISM  
REFER TO NEXT SHEET FOR PARTS DESCRIPTION LISTING

**SHEET 11**



TOUCH SCREEN SUPPORT  
REFER TO NEXT SHEET FOR PARTS DESCRIPTION LISTING

**SHEET 12**

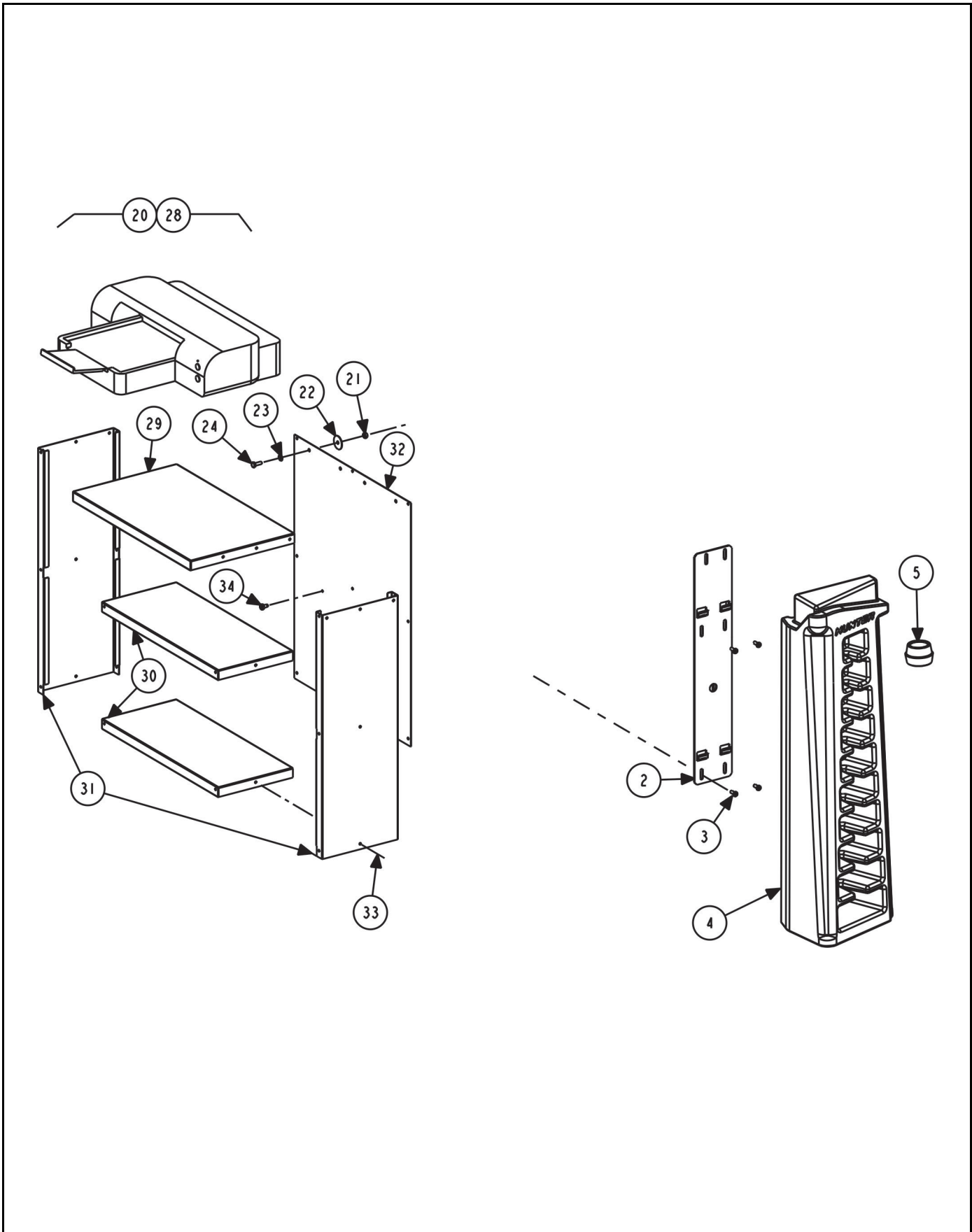
**HammerHead**  
**SHEET 13**

# HD ELITE SERIES BALANCER

REFER TO NEXT SHEET FOR PARTS DESCRIPTION LISTING

PARTS DESCRIPTION LISTING

| Sheet No. | Description                             |
|-----------|---|
| .3        | COLLET STORAGE AND PRINTER OPTION       |
| .4        | COVERS, HOOD, WINGNUT, ETC.             |
| .5        | COVERS, HOOD, WINGNUT, ETC. (Continued) |
| .6        | SMARTSCAN / SMARTSPOT                   |
| .7        | ELECTRIC PANEL                          |
| .8        | .TUB, HOOD SUPPORT, ETC.                |
| .9        | HD VIBRATION STRUCTURE                  |
| .10       | HD PNEUMATICS AND LOAD ROLLER           |
| .11       | WHEEL LIFT MECHANISM                    |
| .12       | TOUCH SCREEN SUPPORT                    |
| .13       | .TOP DEAD CENTER LASER SYSTEM           |

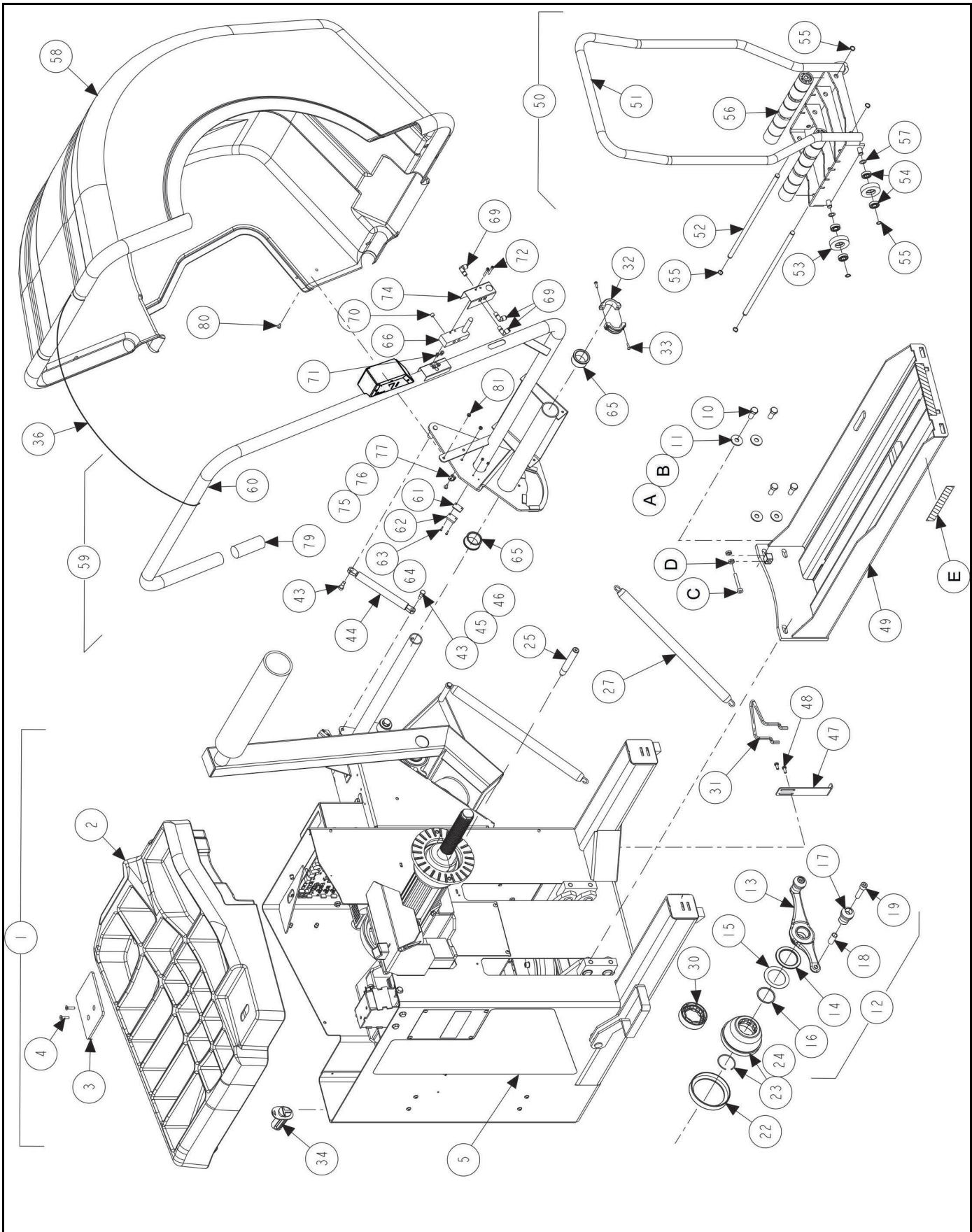


**COLLET STORAGE AND PRINTER OPTION**

**REFER TO NEXT SHEET FOR PARTS DESCRIPTION LISTING**

PARTS DESCRIPTION LISTING

| Index No. | Part Number  | Description   | Qty. |
|-----------|--------------|---|------|
| .1        | base         | BASE, HDE BALANCER  |      |
| .2        | .14-1470-005 | BRACKET, CONE SUPPORT                                     | .1   |
| .3        | .75-758-2    | SOCKET BUTTON HEAD CAP SCREW 1/4-20 X .63 INCH            | .4   |
| and       | .76-414-2    | NUT-HEX INSERT 1/4-20                                     | .4   |
| .4        | .56-70-2     | CARRIER, CONE, BALANCER FRONT LEFT-HAND                   | .1   |
| .5        | 20-2711-1    | KIT, GEN 4 BALANCER CENTERING (Consisting Of:)            | .1   |
| .6        | 20-2683-1    | KIT, P-3/4TON DUAL TAPER COLLET                           | .1   |
| .7        | 192-213-1    | CONE, 2.10-2.31, 2.26-2.47 (GREY / BLACK STRIPED)         | .1   |
| .8        | 192-214-1    | CONE, 2.42-2.63, 2.58-2.79 (YELLOW / BLACK STRIPED)       | .1   |
| .9        | 192-215-1    | CONE, 2.74-2.95, 2.89-3.11 (SMALL GREEN / BLACK STRIPED)  | .1   |
| .10       | 192-216-1    | CONE, 3.05-3.27, 3.21-3.42 (SMALL BLUE / BLACK STRIPED)   | .1   |
| .11       | 192-217-1    | CONE, 3.37-3.58, 3.53-3.74 (RED / BLACK STRIPED)          | .1   |
| .12       | 192-218-1    | CONE, 3.69-3.90, 3.85-4.06 (ORANGE / BLACK STRIPED)       | .1   |
| .13       | 192-219-1    | CONE, 4.01-4.22, 4.17-4.38 (LIGHT GREY / BLACK STRIPED)   | .1   |
| .14       | 192-220-1    | CONE, 4.32-4.54, 4.48-4.70 (PURPLE / BLACK STRIPED)       | .1   |
| .15       | 192-221-1    | CONE, 4.64-4.85, 4.80-5.01 (BIG GREEN / BLACK STRIPED)    | .1   |
| .16       | 192-222-1    | CONE, 4.96-5.17, 5.12-5.33 (BIG BLUE / BLACK STRIPED)     | .1   |
| .17a      | .46-653-2    | SPACER, 1.50 INCH WHEEL OFFSET MTG (Not Illustrated)      | .1   |
| .17b      | .175-392-1   | ADAPTOR, BALANCER CUP WITH RETAINER 6 INCH                | .1   |
| .17c      | .106-157-2   | SLEEVE, CLAMPING 6 INCH CUP                               | .1   |
| .18       | 20-2680-1    | KIT, BALANCER SOFTWARE (Not Illustrated)                  | .1   |
| .19       | 20-1650-1    | KIT, RIM TAGS (Not Illustrated)                           | .1   |
| .20       | 20-2714-1    | SHELF PRINTER, GEN 4 BALANCER (Optional) (Consisting Of:) | .1   |
| .21       | 76-368-2     | NUT, LOCK 1/4-20 NYLON INSERT                             | 2    |
| .22       | 77-144-2     | WASHER, FENDER 1/4 INCH                                   | 2    |
| .23       | 77-67-2      | WASHER, FLAT 1/4 INCH                                     | 2    |
| .24       | 75-29-2      | HEX HEAD CAP SCREW 1/4-20X.75 INCH                        | 2    |
| .25       | 38-954-2     | CABLE, USB 2.0 A/B 2 METER (Not Illustrated)              | 1    |
| .26       | 28-90-2      | FASTENER, VELCRO 2 INCH HOOK SIDE (Not Illustrated)       | 1    |
| .27       | 28-89-2      | FASTENER, VELCRO 2 INCH LOOP SIDE (Not Illustrated)       | 1    |
| .28       | 215-179-1    | SHELF ASSEMBLY, PRINTER (Consisting Of:)                  | 1    |
| .29       | 215-180-005  | SHELF, PRINTER TOP  | 1    |
| .30       | 215-134-005  | SHELF, PRINTER SUPPORT BALANCER                           | 2    |
| .31       | 71-236-005   | SIDE, PRINTER SHELF BALANCER                              | 2    |
| .32       | 171-283-005  | PANEL, REAR PRINTER SHELF                                 | 1    |
| .33       | 48-56-2      | RIVET, BLIND 3/16 X 1/4 INCH                              | 23   |
| .34       | 75-802-2     | SCREW, SELF-TAPPING 10-32 X 3/8 INCH                      | 2    |
| .35       | 38-1155-2    | CABLE, IEC C13/C14 3 FEET (Not Illustrated)               | 1    |
| .36       | 38-911-2     | CABLE, MONITOR POWER TO PC POWER (Not Illustrated)        | 1    |
| .37       | 20-2286-2    | KIT-HD ADAPTOR SUPPORT (Barbell Tree) (Not Illustrated)   | 1    |



**COVERS, HOOD, WINGNUT, ETC.**

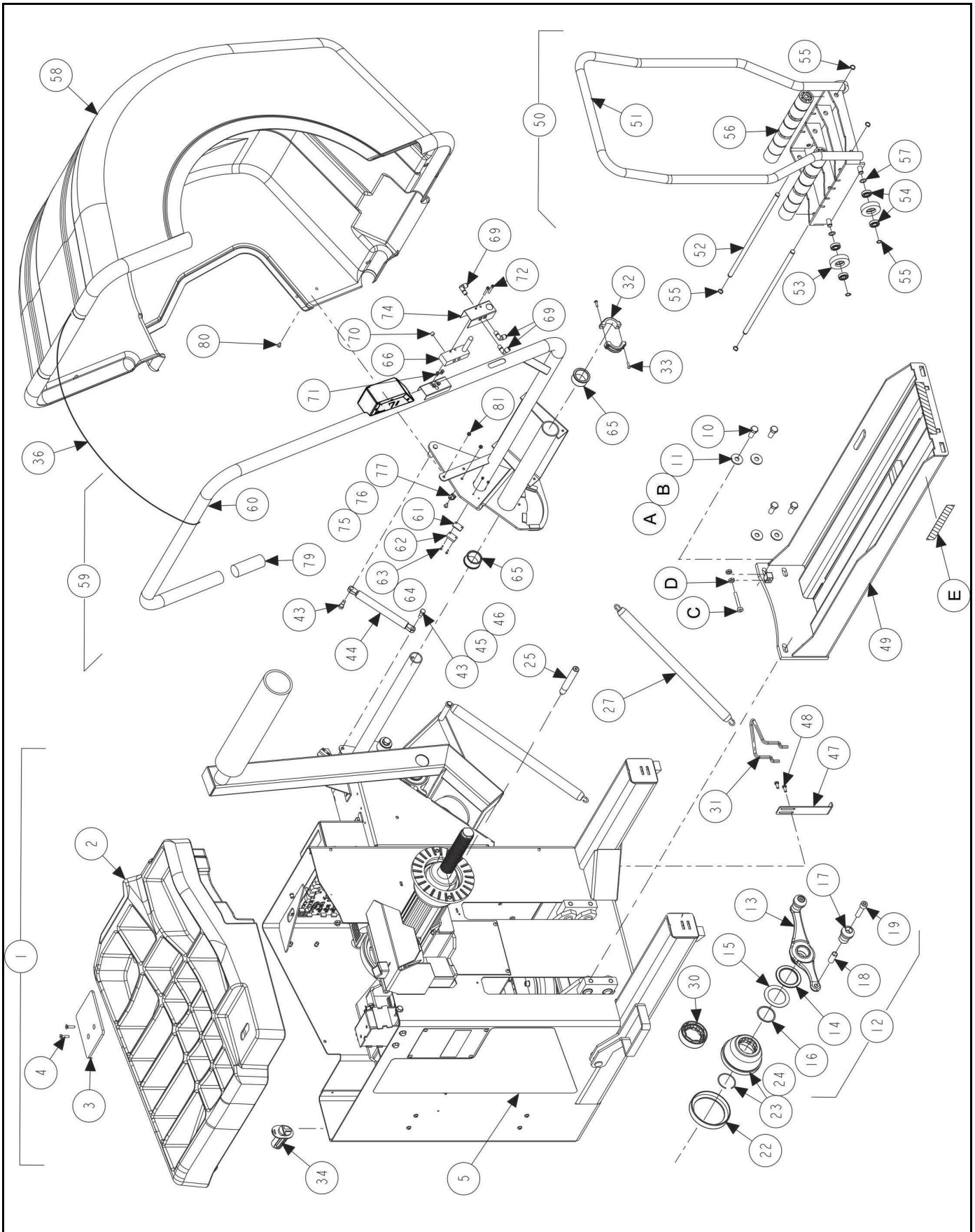
**REFER TO NEXT SHEET FOR PARTS DESCRIPTION LISTING**

PARTS DESCRIPTION LISTING

| Index No. | Part Number | Description  | Qty. |
|-----------|-------------|--|------|
| .1        | .72-666-1   | BASE-HD ELITE BALANCER (Consists Of:)  | .1   |
|           | .72-689-1   | BASE-HD ELITE BALANCER NON LOAD ROLLER (Consists Of:) (Not Illus.)   | .1   |
| 2         | .69-1676-2  | COVER - WEIGHT TRAY TRIMMED, HDE   | .1   |
| 3         | .51-3187-2  | PLATE-ANVIL, HDE   | .1   |
| 4         | .75-226-2   | FLAT HEAD SOCKET CAP SCREW 1/4-20 X 1.00 INCH  | .2   |
| 5         | .128-1825-2 | DECAL, HDE BALANCER  | .1   |
| 6         | .128-1829-3 | DECAL, HD ELITE (Composite of many decals: 128-1196-2, 128-1120-2, 128-381-2, 128-511-2, 128-1111-2, 128-1116-2, 128-1117-2, 128-109-2) (Not Illus.) | .1   |
| 7         | .128-603-2  | DECAL-AIR PRESSURE LIMITS (Not Illustrated)  | .1   |
| 8         | .128-245-2  | DECAL-YELLOW & BLACK (Not Illustrated)   | .1   |
| 9         | .128-1363-2 | DECAL-MADE USA #3 (Not Illustrated)  | .1   |
| .10       | 74-11-2     | HEX HEAD CAP SCREW 1/2-13 X 1.25 INCH GRADE 5 (Full-thread)  | 4    |
| .11       | 77-214-2    | WASHER-FLAT 1/2 SPECIAL  | 4    |
| .12       | .76-433-1   | NUT, FORGED WINGNUT (Consisting. Of:)  | .1   |
| .13       | .76-426-2   | NUT, FORGED WINGNUT  | .1   |
| .14       | .130-250-3* | BEARING WITH WASHER, NEEDLE 55 mm*   | .1   |
| .15       | .130-250-3* | BEARING WITH WASHER, NEEDLE 55 mm *  | .1   |
| .16       | .112-87-2   | SNAP RING, SMALLEY WS-200  | .1   |
| .17       | .142-148-2  | HANDLE, WINGNUT  | .2   |
| .18       | .106-154-2  | SLEEVE, WINGNUT HANDLE   | .2   |
| .19       | .74-206-2   | SOCKET HEAD CAP SCREW 1/2-13 X 2 INCH  | .2   |
| 20        | 20-3708-1   | KIT, HD ELITE BALANCER ACCESSORY (Consisting Of:)  | .1   |
| 21        | 46-320-2    | SPACER, SPINDLE SHAFT (Not Illustrated)  | 1    |
| 22        | 106-82-2    | SLEEVE, CLAMPING CUP   | 1    |
| 23        | 175-353-1   | ADAPTOR, BALANCER CUP W/ RETAINER (Includes:)  | 1    |
| 24        | 41-138-2    | RETAINER, ROUND WIRE 2 INCH DIA.   |      |
| 25        | 65-72-2     | WEIGHT, CALIBRATION  | 1    |
| 26        | 221-589-2   | TOOL, HAMMER / PLIERS (Not Illustrated)  | 1    |
| 27        | 98-303-2    | SPRING, HOOD   | 1    |
| 28        | 221-695-2   | TOOL, HD WEIGHT HAMMER (Not Illustrated)   | 1    |
| 29        | 221-659-2   | TOOL, ADHESIVE WEIGHT REMOVER (Not Illustrated)  | 1    |
| 30        | 223-68-1    | RING, BAL PRESSURE W/ RETAINER   | 1    |
| 31        | 216-43-2    | HOOK, LOWER SPRING MOUNT, GSP BALANCER   | 1    |
| 32        | 12-157-2    | CLAMP HALF-1.5 INCH SHAFT  | 2    |
| 33        | 75-35-2     | ROUND HEAD MACHINE SCREW 10-32 X .63 INCH  | 2    |
| 34        | 233-44-2    | POST, CONE HOOK PLASTIC  | 9    |
| 35        | 75-758-2    | SOCKET BUTTON HEAD CAP SCREW 1/4-20 X .63 INCH   | 4    |
| 36        | 94-35-2     | TIE, WIRE 15 INCH X 1/2 INCH   | 7    |
| 37        | 75-317-2    | SCREW, THREAD. ROLLING 1/4-20 X 5/8 INCH   | 2    |
| 38        | 25-166-2    | GAUGE, RIM WEAR (Not Illustrated)  | 1    |
| 39        | 106-164-2   | SLEEVE, TRUCK CENTER TAPERED PINS (Not Illu.) (no longer included 12/22)   | 1    |
| 40        | 106-163-2   | SLEEVE, TRUCK CENTER EXTEND PINS (Not Illus.) (no longer included 12/22)   | 1    |
| .F        | 98-513-1    | SPRING ASSEMBLY-HD BALANCER DEEP CUP (Not Illustrated)   | 1    |

\* Wingnut service item 130-250-3 contains needle thrust bearing and two thrust washers (only one washer is needed).  
Table Continued on following sheet.





**COVERS, HOOD, WINGNUT, ETC. (continued)**

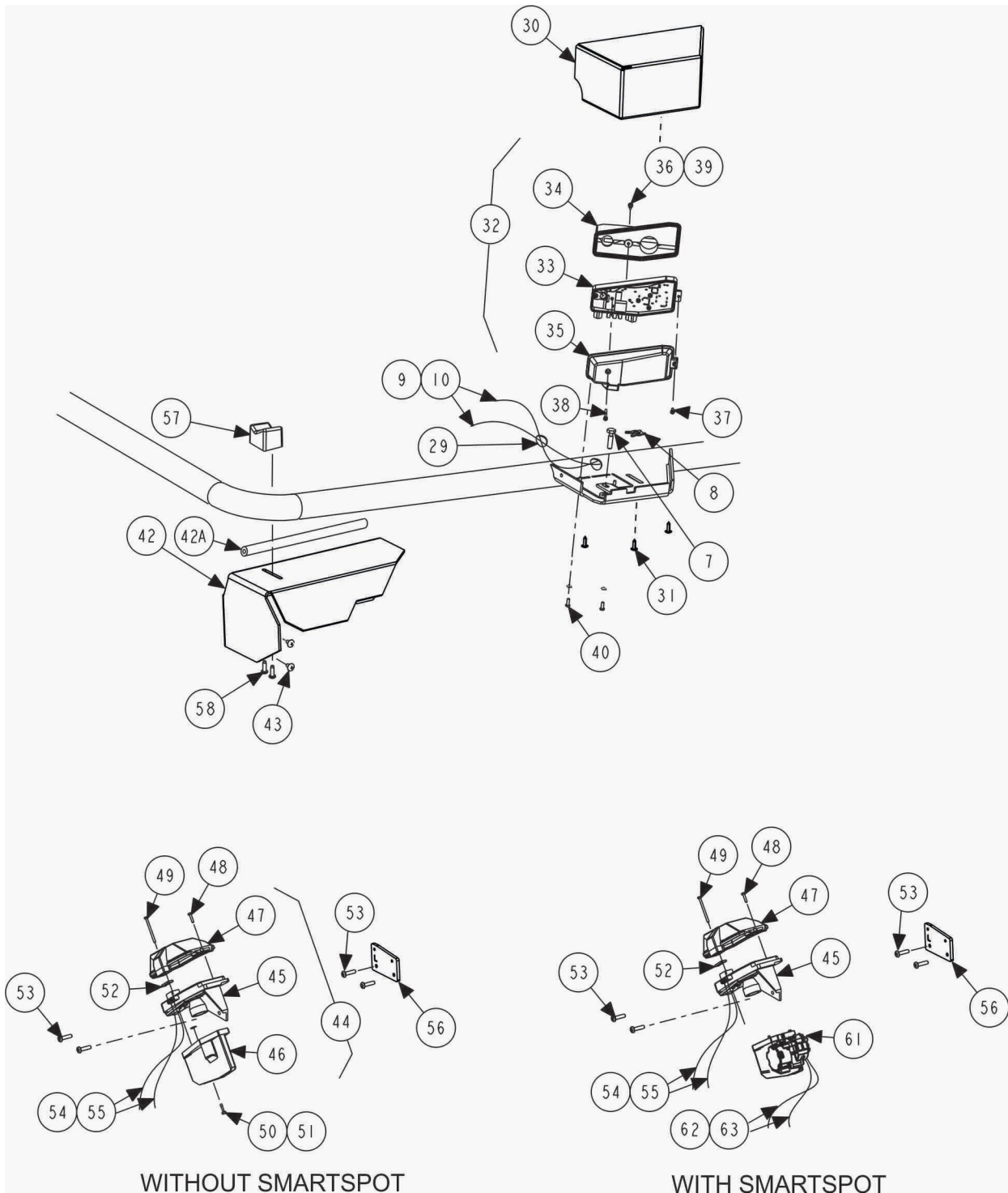
**REFER TO NEXT SHEET FOR PARTS DESCRIPTION LISTING**

## PARTS DESCRIPTION LISTING

Form BD07824-00, 04-23

Sheet 5 of 13

| Index No. | Part Number   | Description  | Qty.  |
|-----------|---------------|--|-------|
| .41       | 106-162-2     | SLEEVE, TRUCK CENTER PINS (Not Illustrated) (no longer included 12/22) | 1     |
| .42       | 221-694-2     | TOOL, WIRE BRUSH (Not Illustrated)                                     | 1     |
| .43       | 74-429-2      | SCREW, SHOULDER 3/8 X 1/2 INCH   | 2     |
| .44       | 98-444-2      | DAMPER, HYDRAULIC DUAL DAMPER  | 1     |
| .45       | 124-53-2      | SEAL, O RING   | 2     |
| .46       | 76-177-2      | NUT, KEPS 5/16 - 18  | 1     |
| .47       | 14-1819-005   | BRACKET, HD BALANCER LEG   | 1     |
| .48       | 75-333-2      | HEX HEAD CAP SCREW 1/4-20 X .63 INCH                                   | 2     |
| A         | 77-359-2      | WASHER, 1.0 OD X .53 ID X .045 INCH (Wheel Lift Shim – as needed)      | 1     |
| B         | 77-360-2      | WASHER, 1.0 OD X .53 ID X .090 INCH (Wheel Lift Shim– as needed)       | 1     |
| .49       | .118-735-1    | BEAM ASSEMBLY-HD WHEEL LIFT (Includes:)                                | .1    |
| C         | .74-90-2      | SOCKET HEAD CAP SCREW 5/16-18 X 2.50 INCH (Full Thread)                | .1    |
| D         | .76-176-2     | NUT, JAM 5/16-18   | .2    |
| E         | .128-245-2    | DECAL, YELLOW & BLACK  | .2    |
| .50       | .56-58-1      | CARRIER, HD WHEEL LIFT (Consists of:)                                  | .1    |
| .51       | 56-59-1-005   | CARRIER, HD WHEEL LIFT PAINTED   | 1     |
| .52       | 97-572-2      | SHAFT, HD WHEEL LIFT ROLLER  | 2     |
| .53       | 111-97-2      | ROLLER, WHEEL LIFT FRONT   | 4     |
| .54       | TR50          | BEARING  | 8     |
| .55       | 112-115-2     | SNAP RING, TRUARC#5100-50  | 8     |
| .56       | 111-128-2     | ROLLER, HD WHEEL LIFT  | 14    |
| .57       | 98-392-2      | CURVED, WASHER 1/2 INCH  | 4     |
| .58       | 69-1267-2     | WHEEL COVER, HD BALANCER   | 1     |
| .59       | 16-1200-1     | TUBE ASSEMBLY, HOOD HDE (Camera on Sheet 6) (Consists of:)             | 1     |
| .60       | 16-1199-1-005 | TUBE ASSEMBLY, WHEEL COVER, HDE  | 1     |
| .61       | 46-445        | SPACER, MAGNET   | 1     |
| .62       | 60-24-2       | MAGNET, REED SWITCH ACTUATOR   | 1     |
| .63       | 75-199-2      | TRUSS HD MACHINE SCREW 4-40 X 7/8 INCH                                 | 2     |
| .64       | 76-366-2      | NUT, LOCK 4-40 NYLON INSERT  | 2     |
| .65       | 130-141-2     | BEARING, FLANGED 1.5 X 1.0 INCH  | 2     |
| .66       | 108-192-2     | VALVE, WHEEL LIFT CONTROL  | 1     |
| .67       | 16-423-2      | TUBE, AIR .172 INCH ID (Not Illustrated)                               | 15 FT |
| .68       | 94-13-2       | TIE, CABLE (Not Illus.)  | 3     |
| .69       | 145-409-2     | FITTING-1/4 INCH TUBE - 1/8 IN. NPT ELBOW                              | 3     |
| .70       | 145-307-2     | FITTING, 1/8 INCH NPT PLUG   | 1     |
| .71       | Not Used      | Not Used   | -     |
| .72       | 75-532-2      | SOCKET HD CAP SCREW 10-32X1.25 INCH                                    | 2     |
| .73       | 113-278-2     | BUSHING, AIR LINE WHEEL COVER (Not Illustrated)                        | 1     |
| .74       | 69-1272-005   | COVER LIFT VALVE   | 1     |
| .75       | 12-274-2      | CLAMP, P CLIP 1/2 INCH ID RUBBER                                       | 1     |
| .76       | 75-312-2      | TRUSS HEAD MACHINE SCREW 10-32 X 1/2 INCH                              | 1     |
| .77       | 76-263-2      | NUT, LOCK 10-32 NYLON INSERT   | 1     |
| .79       | 53-221-2      | CAP-VINYL 1.5 INCH ID X 4 INCH   | 1     |
| .80       | 75-312-2      | TRUSS HEAD MACHINE SCREW 10-32 X 1/2 INCH                              | 2     |
| .81       | 76-263-2      | NUT-LOCK 10-32 NYLON INSERT  | 1     |



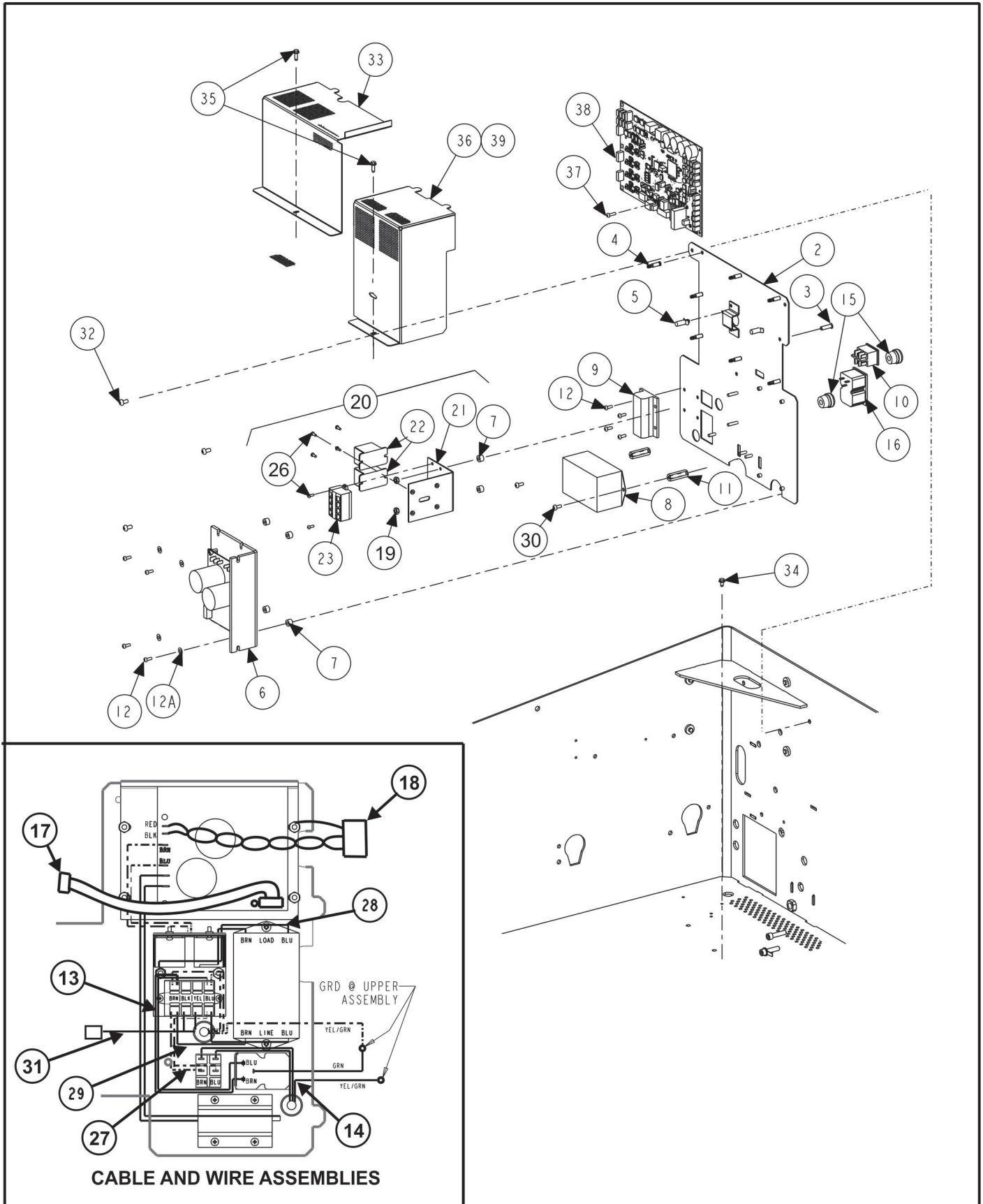
## SMARTSCAN / SMARTSPOT

REFER TO NEXT SHEET FOR PARTS DESCRIPTION LISTING

## PARTS DESCRIPTION LISTING

| Index No. | Part Number             | Description   | Qty.  |
|-----------|-------------------------|---|-------|
| 6         | 16-1200-1               | TUBE ASSEMBLY, HOOD HDE (Consists of:)                          | 1     |
| 7         | 75-865-2                | SCREW, SPECIAL 1/4-20   | 1     |
| 8         | 112-173-2               | RETAINING RING, SPLIT 3/16 INCH DIAMETER                        | 1     |
| 9         | 38-1290-2               | CABLE, USB 2.0 A/B 3 METER                                      | 1     |
| 10        | 38-1284-3               | CABLE, ENCODER / OUTER CAMERA                                   | 1     |
| 29        | 113-351-2               | BUSHING, GROMMET, .88 INCH HOLE                                 | 1     |
| 30        | 69-1689-1-005           | COVER, OUTER CAMERA, HDE  | 1     |
| 31        | 75-828-2                | TRUSS HEAD SHEET METAL SCREW-#8 X .63 INCH DRILL POINT          | 3     |
| 32        | 125-493-1               | SENSOR, BALANCER OUTER CAMERA                                   | 1     |
| 33        | 125-496-1               | SENSOR, BALANCER OUTER CAMERA SUB-ASSEMBLY                      | 1     |
| 34        | 179-82-2                | SHIELD, OUTER LASER   | 1     |
| 35        | 69-1554-2               | COVER, OUTER LASER  | 1     |
| 36        | 75-863-2                | CAPTIVE SCREW 4-40X0.5 INCH                                     | 1     |
| 37        | 75-861-2                | PAN HEAD MACHINE SCREW 4-40 X 1/2 INCH                          | 1     |
| 38        | 75-862-2                | PAN HEAD MACHINE SCREW 4-40X1 1/2 INCH                          | 1     |
| 39        | 112-174-2               | RETAINING RING, E STYLE 7/64                                    | 1     |
| 40        | 75-24-2                 | ROUND HEAD MACHINE SCREW 6-32 X .38 INCH                        | 2     |
| AND       | 77-82-2                 | WASHER-LOCK 6 HELICAL SPG                                       | 2     |
| 41        | 94-50-2                 | TIE-WIRE 15 INCH X .298 INCH (Not Illustrated)                  | 1     |
| 42        | 14-1804-005             | BRACKET-INNER CAM SHIELD, HDE                                   | 1     |
| 42A       | 141-110-2               | EXTRUSION- 5/8 INCH X 5/8 INCH FOAM                             | 9 IN. |
| 43        | 75-401-2                | TRUSS HEAD SHEET METAL SCREW 10 X 1/2 INCH                      | 2     |
| 44*       | 125-492-1 / 125-492-1-2 | SENSOR, BALANCER INNER CAMERA / COLOR VERSION*                  | 1     |
| 45*       | 125-495-1 / 125-495-1-2 | SENSOR, BAL INNER CAMERA SUB-ASSEMBLY / COLOR VERSION*          | 1     |
| or        | 125-523-1 / 125-523-1-2 | SENSOR-BAL INNER CAM CLR, PNTR (Version required for SmartSpot) | 1     |
| 46        | 179-81-2                | SHIELD, INNER LASER   | 1     |
| 47        | 69-1526-2               | COVER, INNER LASER HOUSING                                      | 1     |
| 48        | 75-861-2                | PAN HEAD MACHINE SCREW 4-40 X 1/2 INCH                          | 1     |
| 49        | 75-862-2                | PAN HEAD MACHINE SCREW 4-40 X 1 1/2 INCH                        | 1     |
| 50        | 75-863-2                | CAPTIVE SCREW 4-40 X 0.5 INCH                                   | 1     |
| 51        | 112-174-2               | RETAINING RING, E STYLE 7/64                                    | 1     |
| 52        | 49-88-2                 | GASKET, CABLE SEAL  | 1     |
| 53        | 75-757-2                | SOCKET BUTTON HEAD CAP SCREW 10-32 X .50 INCH                   | 4     |
| 54        | 38-1283-3               | CABLE, ENCODER/INNER CAMERA                                     | 1     |
| 55        | 38-954-2                | CABLE, USB 2.0 A/B 2 METER                                      | 1     |
| 56        | 14-1802-005             | BRACKET-INNER CAMERA, HDE                                       | 1     |
| 57        | 228-94-2                | STOP, HOOD FRONT  | 1     |
| 58        | 75-870-2                | SCREW, SELF-TAPPING 10-14 X 5/8 INCH                            | 2     |
| 61        | 95-53-1                 | POINTER-LASER, BALANCER   | 1     |
| 62        | 38-1382-1 / 38-1382-3   | CABLE ASSEMBLY-LASER SPOTTER SENSOR                             | 1     |
| 63        | 38-1383-1 / 38-1383-3   | CABLE ASSEMBLY -LASER SPOTTER MOTOR                             | 1     |
| 64        | 128-1785-2-08           | DECAL-LASER EXPLANATORY SWP (Not Illustrated)                   | 1     |

\* Software V5.2.2 or greater required to enable support of new color imagers (-2 versions)



## ELECTRIC PANEL

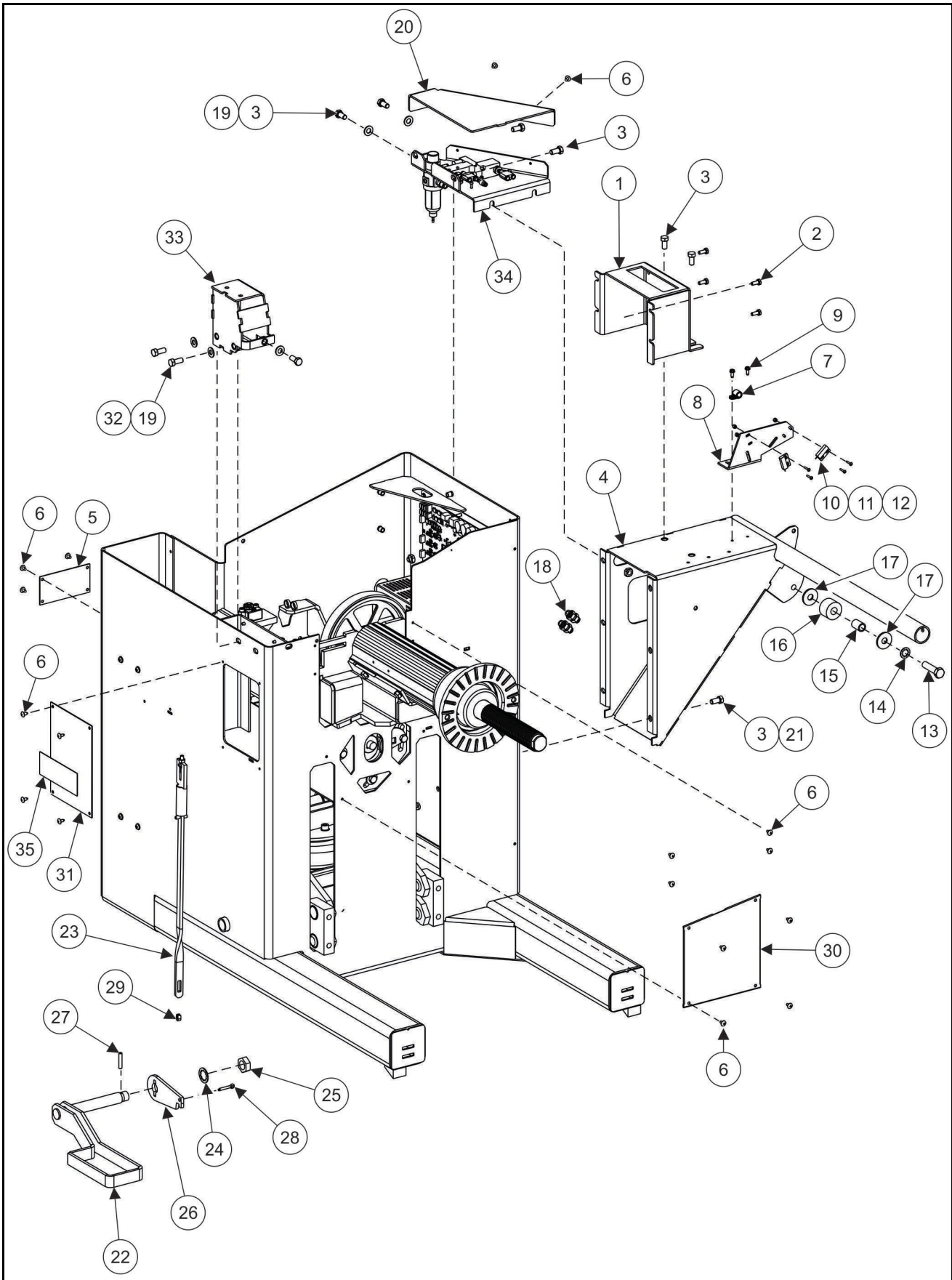
REFER TO NEXT SHEET FOR PARTS DESCRIPTION LISTING

## PARTS DESCRIPTION LISTING

Form BD07824-00, 04-23

Sheet 7 of 13

| Index No. | Part Number | Description  | Qty.    |
|-----------|-------------|--|---------|
| 1         | 232-300-1   | ELECTRIC PANEL, GEN5 BALANCER (Consisting Of:)   | 1       |
| 2         | 51-3208-1   | PLATE ASSEMBLY, HDE ELECTRONIC (Includes:)   | 1       |
| 3         | 46-750-2    | SPACER, PRESS IN 6-32 X .75 INCH LONG  | 1       |
| 4         | 46-749-2    | SPACER, SNAP TOP STANDOFF, .75   | 7       |
| 5         | 46-751-2    | SPACER-NYLON PUSH IN .63 INCH HIGH   | 2       |
| 6         | 232-342-2   | DC MOTOR DRIVE, 230V/8A V2   | 1       |
| 7         | 46-704-2    | SPACER #8 X .25 INCH LONG  | 4       |
| 8         | 136-108-2   | FILTER, POWER LINE RFI   | 1       |
| 9         | 81-82-1     | RESISTOR ASSEMBLY, 75 OHM WITH LEADS   | 1       |
| 10        | 18-270-2    | SWITCH, DOUBLE PULL SINGLE THROW ROCKER  | 1       |
| 11        | 46-705-2    | STANDOFF, 3/8 HEX, 8-32 X 1-1/4 INCH   | 2       |
| 12        | 75-24-2     | ROUND HEAD MACHINE SCREW 6-32 X .38 INCH   | 8       |
| 12A       | 77-12-2     | WASHER, LOCK #6 INTERNAL LOCK  | 4       |
| 13        | 38-1215-2   | POWER CORD, SPLIT IEC  | 1       |
| 14        | 38-845-3    | CABLE ASSEMBLY, POWER GSP9700  | 1       |
| 15        | 59-62-2     | STRAIN RELIEF, HEYCO #1244   | 2       |
| 16        | 36-67-1     | RECEPTACLE ASSEMBLY, GEN4 BAL  | 1       |
| 17        | 38-1023-1   | CABLE ASSEMBLY, 9200 POWER SUPPLY  | 1       |
| 18        | 37-628-1    | WIRE ASSEMBLY, MOTOR   | 1       |
| 19        | 76-71-2     | NUT-KEPS 8-32  | 2       |
| 20        | 232-277-1   | ELECTRIC ASSEMBLY-BALANCER, RELAY (Consisting Of:)   | 1       |
| 21        | 14-1507-1   | BRACKET ASSEMBLY, BALANCER RELAY   | 1       |
| 22        | 18-571-2    | RELAY, BALANCER DC DRIVE   | 2       |
| 23        | 19-282-2    | TERMINAL STRIP, 4 COND, 4 POLE   | 1       |
| 24        | 37-477-1    | WIRE ASSEMBLY, 9700 POWER SWITCH (Not Illustrated)   | 1       |
| 25        | 37-656-1    | WIRE ASSEMBLY, BALANCER RELAY POWER SPLIT (Not Illustrated)  | 1       |
| 26        | 75-171-2    | ROUND HEAD MACHINE SCREW 4-40 X 5/16 INCH  | 6       |
| 27        | 37-652-1    | WIRE ASSEMBLY, GEN4 BALANCER POWER SWITCH  | 1       |
| 28        | 37-633-1    | WIRE ASSEMBLY, BALANCER RELAY TO DRIVE   | 1       |
| 29        | 37-657-1    | WIRE ASSEMBLY, BALANCER TERMINAL TO FILTER   | 1       |
| 30        | 75-32-2     | ROUND HEAD MACHINE SCREW 8-32 X 3/8 INCH   | 2       |
| 31        | 37-694-1    | WIRE ASSEMBLY, GEN5 BALANCER RELAY POWER   | 1       |
| 32        | 75-802-2    | SCREW, SELF-TAPPING 10-32 X 3/8 INCH   | 4       |
| 33        | 69-1409     | COVER, ELECTRONICS, LEFT-HAND  | 1       |
| 34        | 75-682-2    | SCREW, SELF-TAPPING 8-32 X 5/16 INCH GREEN   | 1       |
| 35        | 75-327-2    | SCREW, SELF-TAPPING 8-32 X 1/2 INCH  | 2       |
| 36        | 69-1564     | COVER, ELECTRONICS, RIGHT-HAND   | 1       |
| 37        | 75-49-2     | ROUND HEAD MACHINE SCREW 6-32 X 1/2 INCH   | 1       |
| 38        | 45-1847-1   | PCA, BALANCER DAQ-USB G3 (08-2023)   | 1       |
| and       | 37-819-1    | Board Power Cable  | 1       |
| or        | 45-1719-1   | PCA, BALANCER DAQ-USB G2   |         |
| or        | 45-1513-1   | PCA, BALANCER DAQ-USB  | 1       |
| and       | 21-204-2    | CONNECTOR .1 2 CIRCUIT JUMPER (S3) (Not Shown)<br>(removed 4/17 from 45-1513-2 – needed on 45-1719-1 or 45-1847-1 at J42/pin3&4) | 1       |
| 39        | 113-258-2   | BUSHING, PUSH ON TRIM  | 1.25 in |



TUB, HOOD SUPPORT, ETC.

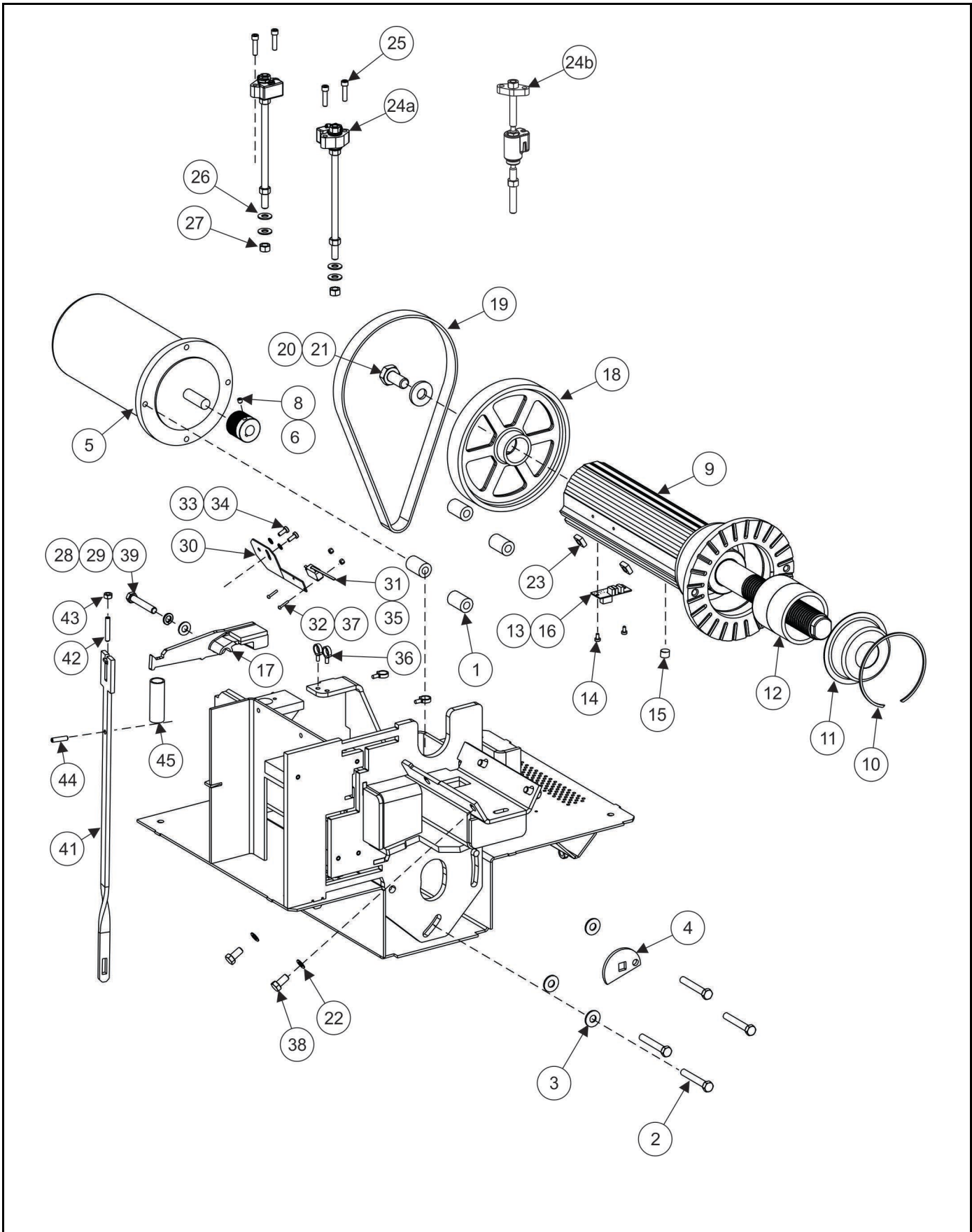
REFER TO NEXT SHEET FOR PARTS DESCRIPTION LISTING

## PARTS DESCRIPTION LISTING

Form BD07824-00, 04-23

Sheet 8 of 13

| Index No. | Part Number    | Description   | Qty.     |
|-----------|----------------|---|----------|
| -         | .72-666-1-PPP  | BASE, HD ELITE BALANCER (Partial List)                    | .1       |
| 1         | .11-1823-1-PPP | SUPPORT, TDC LASER, HDE                                   | .1       |
| 2         | .75-120-2      | HEX HEAD CAP SCREW 1/4-20 X .63 INCH GRADE 8 FULL-THDREAD | .4       |
| 3         | .74-59-3       | HEX HEAD CAP SCREW 3/8-16 X .75 INCH FULL-THDREAD         | .16      |
| 4         | .11-1822-1-PPP | SUPPORT ASSEMBLY, HDE HOOD                                | .1       |
| 5         | .69-1696-PPP   | COVER, LEFT HAND TUB, HDE                                 | .1       |
| 6         | .75-401-2      | .TRUSS HEAD SHEET METAL SCREW 10 X .50 INCH               | .16      |
| 7         | .12-145-2      | CLAMP, CABLE 1/4 INCH RUBBER                              | .1       |
| 8         | .14-1187       | BRACKET, SWITCH HD BALANCER                               | .1       |
| 9         | .75-413-2      | SCREW, SELF-TAPPING 10-32 X .50 INCH HEX WASHER HEAD      | .2       |
| .10       | .18-497-1      | SWITCH, REED SWITCH ASSEMBLY                              | .2       |
| .11       | .75-584-2      | .TRUSS HEAD MACHINE SCREW 4-40 X 5/8 INCH SS              | .4       |
| .12       | .76-366-2      | NUT, LOCK 4-40 NYLON INSERT                               | .6       |
| .13       | .74-345-2      | HHCS-1/2-13 X 2.00 INCHGRADE 5                            | .1       |
| .14       | .77-22-2       | WASHER, LOCK 1/2 INCH INTERNAL TOOTH                      | .1       |
| .15       | .113-174-2     | BUSHING, STEEL 0.69 OD X 0.522 INCH ID                    | .1       |
| .16       | .228-25-2      | STOP, 1.50 INCH OD RUBBER TUBE                            | .1       |
| .17       | .77-214-2      | WASHER, FLAT 1/2 INCH SPECIAL                             | .6       |
| .18       | .145-401-2     | FITTING, 1/4 INCH TUBE STRAIGHT BULKHEAD                  | .2       |
| .19       | .77-26-2       | WASHER, FLAT 3/8 INCH                                     | .4       |
| .20       | .116-322-PPP   | STIFFENER, BACK, HDE                                      | .1       |
| .21       | .76-414-2      | NUT, HEX INSERT 1/4-20                                    | .12      |
| .22       | .177-68-1-005  | PIVOT, HD BRAKE WELDMENT                                  | .1       |
| .23       | .63-316-1      | ROD, HD BRAKE ASSEMBLY (See sheet 5)                      | .1       |
| .24       | .77-50-2       | WASHER, LOCK 3/4 INCH INTERNAL TOOTH                      | .1       |
| .25       | .76-108-2      | NUT, JAM 3/4-16   | .1       |
| .26       | .164-92-005    | LEVER, HD BRAKE CRANK                                     | .1       |
| .27       | .135-436-2     | PIN, DOWEL 1 3/8 X 1/4 INCH HARDENED                      | .1       |
| .28       | .135-435-2     | PIN, COTTER 1 X 3/16 INCH                                 | .1       |
| .29       | .64-163-2      | PAD, EXTRUDED RUBBER 3/16                                 | .0.25 IN |
| .30       | .69-1694-PPP   | COVER, MOTOR, HDE   | .1       |
| .31       | .69-1695-PPP   | COVER, FRONT TUB, HDE                                     | .1       |
| .32       | .74-138-2      | HEX HEAD CAP SCREW 3/8-16X.88 INCH FULL-THDREAD           | .3       |
| .33       | .11-1810-1-005 | SUPPORT ASSEMBLY, HDE ANVIL                               | .1       |
| .34       | .111-118-1     | ROLLER ASSEMBLY, HD LOADED RUNOUT (See Sheet 10)          | .1       |
| .35       | .128-1363-2    | DECAL, MADE USA #3  | .1       |



## HD VIBRATION STRUCTURE

REFER TO NEXT SHEET FOR PARTS DESCRIPTION LISTING

## PARTS DESCRIPTION LISTING

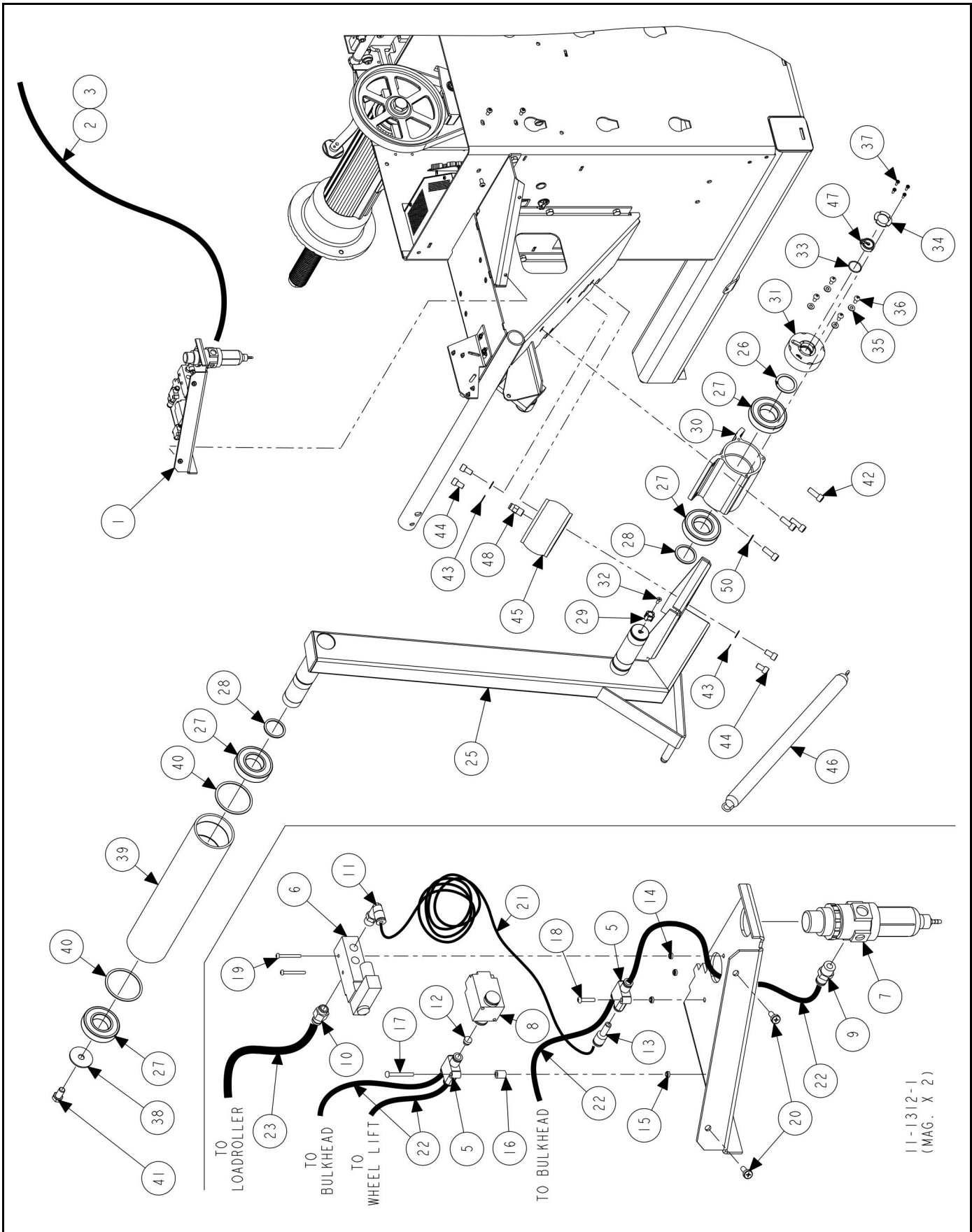
| Index No. | Part Number  | Description  | Qty. |
|-----------|--------------|--|------|
| -         | 72-666-1-PPP | BASE, HD ELITE BALANCER (Partial List)                   | 1    |
| 1         | 46-422-2     | SPACER, MOTOR  | 4    |
| 2         | 74-68-2      | HHCS 3/8-16X2.50 ZP                                      | 4    |
| 3         | 77-66-2      | WASHER, FLAT 3/8 TPA-W ZP                                | 3    |
| 4         | 172-34-2     | CAM, BELT TENSIONER                                      | 1    |
| 5         | 129-232-1    | MOTOR, DC 9700 BALANCER (Includes:)                      | 1    |
| 6         | 107-116-2    | PULLEY, 9722   | 1    |
| 7         | 162-123-2    | ADHESIVE, LOCTITE #603                                   | A/R  |
| 8         | 75-66-2      | SOCKET SET SCREW 1/4-20 X .25 INCH CUP PT                | 2    |
| 9         | 105-780-1    | HOUSING, HDE SPINDLE ASM (Includes:)                     | 1    |
| 10        | 112-112-2    | SNAP RING, INTERNAL 115MM                                | 1    |
| 11        | 41-221-2     | RETAINER, SPRING COVER                                   | 1    |
| 12        | 98-399-2     | SPRING, HUB COMPRESSION                                  | 1    |
| 13        | 45-1531-1    | PCB, SPINDLE ENCODER DIFF OUT                            | 1    |
| 14        | 75-152-2     | PAN HEAD MACHINE SCREW 8-32 X .31 INCH                   | 2    |
| 15        | 53-238-2     | PLUG, PLASTIC FOR .75 INCH HOLE                          | 1    |
| 16        | 38-1265-3    | CABLE ASSEMBLY, DIFF SPINDLE ENCODER                     | 1    |
| 17        | 212-49-1     | LOCK, ARM ASSEMBLY                                       | 1    |
| 18        | 107-118-2    | PULLEY, DRIVEN WITH BALANCE BAND                         | 1    |
| 19        | 126-38-2     | BELT, POLY-V DRIVE                                       | 1    |
| 20        | 77-239-2     | WASHER, FLAT 5/8 INCH SPECIAL                            | 1    |
| 21        | 74-365-2     | HEX HEAD CAP SCREW M16-2 X 35MM FULL-THREAD GRADE 8.8    | 1    |
| 22        | 77-297-2     | WASHER, FLAT 3/8 INCH                                    | 4    |
| 23        | 76-428-2     | NUT, 3/8-16, .615 SQ X .250 INCH                         | 4    |
| 24b       | 109-190-1*   | TRANSDUCER ASSEMBLY BALANCER, MID FORCE                  | 2    |
| 24a       | 109-187-1*   | TRANSDUCER ASM, HDE                                      | 2    |
| 25        | 75-239-2     | SOCKET HEAD CAP SCREW 1/4-20 X 1.00 INCH FULL-THREAD     | 4    |
| 26        | 77-381-2     | WASHER 0.26 ID X 0.49 OD X .035 INCH                     | 2    |
| 27        | 76-485-2     | NUT, HEX 3/8-24 GRADE 8                                  | 2    |
| 28        | 74-81-2      | HHCS 3/8-16X2.25 GRADE 5                                 | 1    |
| 29        | 77-51-2      | WASHER, LOCK 3/8 INCH HELICAL SPRING                     | 1    |
| 30        | 14-1174      | BRACKET, HD FOOT BRAKE SWITCH                            | 1    |
| 31        | 18-454-2     | SWITCH   | 1    |
| 32        | 75-75-2      | ROUND HEAD MACHINE SCREW 4-40X.63 INCH                   | 2    |
| 33        | 75-161-2     | PAN HEAD MACHINE SCREW 10-32X.50 INCH                    | 2    |
| 34        | 77-11-2      | WASHER, LOCK 10 INTERNAL TOOTH                           | 2    |
| 35        | 38-1026-1    | CABLE ASSEMBLY, SPINDLE LOC                              | 1    |
| 36        | 94-41-2      | CLAMP, RELEASABLE, FIN BASE                              | 2    |
| 37        | 76-366-2     | NUT, LOCK 4-40 NYLON INSERT                              | 6    |
| 38        | 74-522-3     | HEX HEAD CAP SCREW 3/8-16 X .75 INCH FULL-THREAD GRADE 5 | 16   |
| 39        | 77-26-2      | WASHER, FLAT 3/8 INCH                                    | 4    |
| 40        | 63-316-1     | ROD, HD BRAKE ASSEMBLY (Consists Of:)                    | 1    |
| 41        | 63-315-1-005 | ROD, HD BRAKE WELDMENT                                   | 1    |
| 42        | 75-702-2     | SCREW, SOCKET SET SCREW 1/4-20 X 1.5 INCH FLAT POINT     | 1    |
| 43        | 76-13-2      | NUT, HEX 1/4-20  | 1    |
| 44        | 135-53-2     | 1/4 X1 INCH ROLL PIN                                     | 1    |
| 45        | 98-438-2     | SPRING, COMPRESSION 0.845 OD X 3.5 INCH LONG             | 1    |

\* New (24b) and old (24a) force transducers are NOT interchangeable. Change to new occurred with appearance of Smartspot.

**HUNTER**  
Engineering Company

PPP-Paint Code Required  
A/R-As Required  
REF-Reference

11250 HUNTER DRIVE BRIDGETON, MO 63044

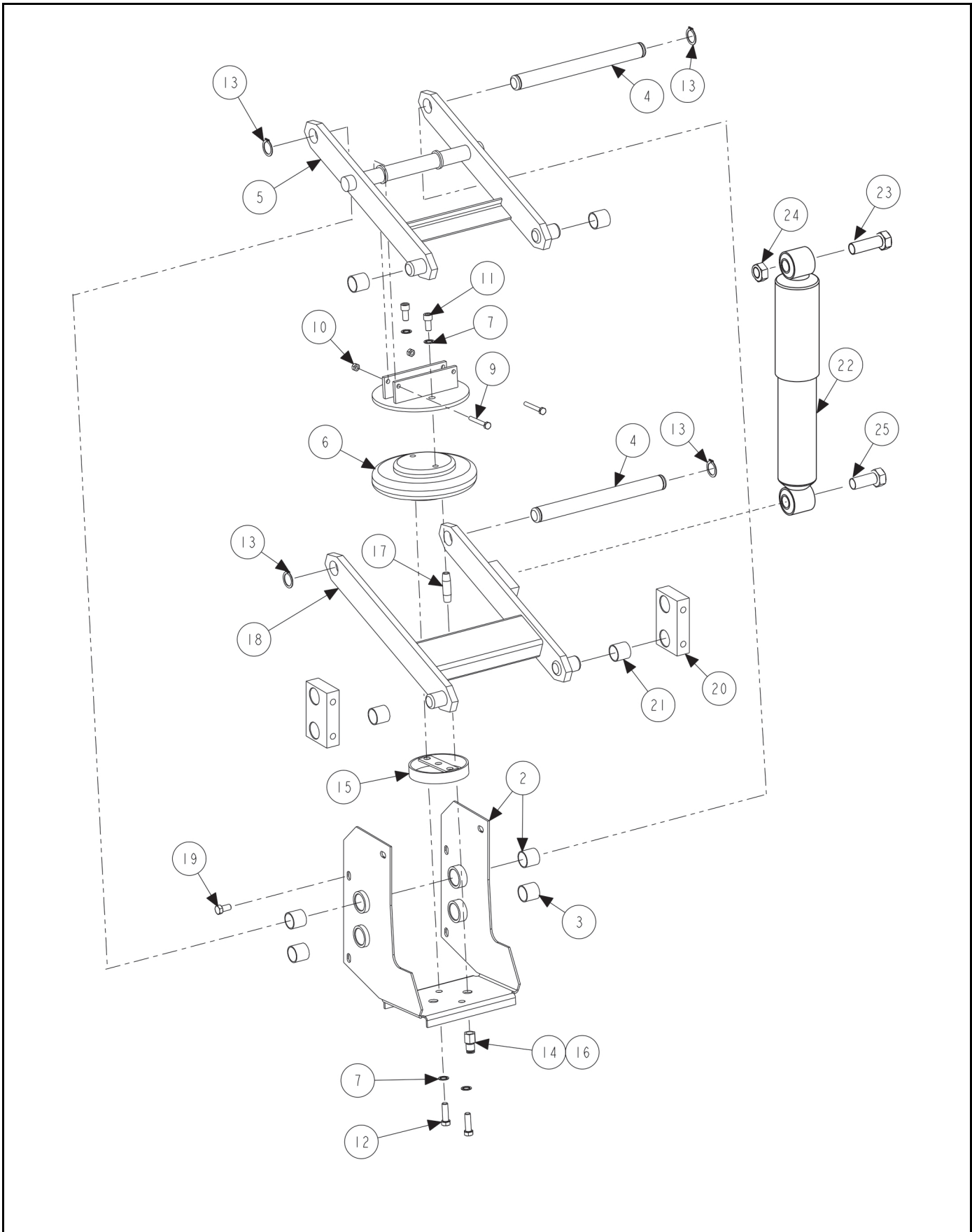


## HD PNEUMATICS AND LOAD ROLLER

REFER TO NEXT SHEET FOR PARTS DESCRIPTION LISTING

## PARTS DESCRIPTION LISTING

| Index No. | Part Number    | Description   | Qty.     |
|-----------|----------------|---|----------|
| .1        | .11-1825-1     | SUPPORT ASSEMBLY, HDE PNEUMATIC (Consisting Of:)                  | .1       |
| .OR       | .11-1841-1     | SUPPORT ASSEMBLY, HDE NON LR PNEUMATIC (Consisting Of:)           | .1       |
| .2        | .137-96-1      | HOSE ASSEMBLY, PNEUMATIC SUPPLY                                   | .1       |
| .3        | .128-603-2     | DECAL, AIR PRESSURE LIMITS  | .1       |
| .4        | .11-1826-1-PPP | SUPPORT, HD BALANCER PNEUMATIC (Includes:)                        | .1       |
| .14       | .76-353-2      | NUT, PRESS IN 4-40 18 GAUGE                                       | .2       |
| .15       | .76-349-2      | NUT, PRESS 6-32   | .2       |
| .5        | .145-410-2     | PNEUMATIC, FITTING 1/4 INCH Y                                     | .2       |
| .6        | .108-178-1     | VALVE, AIR SOLENOID (Only with Load Roller)                       | .1       |
| .7        | .136-78-2      | FILTER/REGULATOR, GSP9700   | .1       |
| .8        | .108-162-1     | VALVE, TWO WAY ASSEMBLY   | .1       |
| .9        | .145-273-2     | FITTING, 1/4 HOSE X 1/4 INCH NPT                                  | .1       |
| .10       | .145-216-2     | FITTING, 5/16 TUBE X 1/8 INCH NPT ADAPTOR (Only with Load Roller) | .1       |
| .11       | .145-367-2     | .1/8 NPT X 5/32 INCH PTC DEGREE (Only with Load Roller)           | .1       |
| .12       | .145-351-2     | FITTING, NIPPLE REDUCR 5/16-1/4 INCH                              | .1       |
| .13       | .145-283-2     | FITTING, REDUCER (Only with Load Roller)                          | .1       |
| .16       | .46-616-2      | SPACER, #8 X 5/16 OUTSIDE DIAMETER X 3/8 INCH LENGTH              | .1       |
| .17       | .75-240-2      | ROUND HEAD MACHING SCREW 6-32 X 1 1/8 INCH                        | .1       |
| .18       | .75-308-2      | ROUND HEAD MACHING SCREW 6-32 X .88 INCH (Only with Load Roller)  | .1       |
| .19       | .75-217-2      | ROUND HEAD MACHING SCREW 4-40 X 1 INCH (Only with Load Roller)    | .2       |
| .20       | .75-161-2      | PAN HEAD MACHING SCREW 10-32 X .50 INCH (Only with Load Roller)   | .2       |
| .21       | .16-450-2      | TUBE, AIR 5/32 INCH OUTSIDE DIAMETER (Only with Load Roller)      | .144 IN. |
| .22       | .16-423-2      | TUBE, AIR .172 INCH INSIDE DIAMETER                               | 83 IN.   |
| .23       | .16-321-2      | TUBE, 5/16 INCH OUTSIDE DIAMETER (Only with Load Roller)          | 23 IN.   |
| A         | .135-406-2     | PIN-ROLL 1/8 X 3/8 INCH (Only with NON Load Roller) (Not Illus.)  | .1       |
| .24       | .111-118-1     | ROLLER ASSEMBLY, HD LOADED RUNOUT (Consisting Of:)                | .1       |
| .25       | .103-164-1-005 | ARM ASSEMBLY, LOADED RUNOUT                                       | .1       |
| .26       | .112-79-2      | SNAP RING, EXTERNAL, 1-9/16 DIA                                   | .1       |
| .27       | .130-137-2     | BEARING, 40 MM INSIDE DIAMETER X 80 MM OUTSIDE DIAMETER           | .4       |
| .28       | .112-78-2      | SNAP RING, SMALLEY WSW-162  | .2       |
| .29       | .176-35-1      | LOCATOR ASSEMBLY, MAGNET  | .1       |
| .30       | .105-440-2     | HOUSING, LOAD ROLLER BEARING                                      | .1       |
| .31       | .113-197-2     | BUSHING, LRO SENSOR   | .1       |
| .32       | .75-508-3      | FLAT HEAD MACHING SCREW 10-32 X .50 INCH                          | .1       |
| .33       | .124-117-2     | O-RING .989 INSIDE DIAMETER X .070 INCH CS BUNA-N                 | .1       |
| .34       | .41-112        | RETAINER, INNER DATASET   | .1       |
| .35       | .77-67-2       | WASHER, FLAT 1/4 INCH   | .4       |
| .36       | .75-176-2      | ROUND HEAD MACHING SCREW 1/4-20 X 1/2 INCH                        | .4       |
| .37       | .75-423-2      | SCREW, SELF-TAPPING 4-40 X .38 INCH                               | .4       |
| .38       | .77-249-2      | WASHER, FLAT 1/2 INCH SPECIAL                                     | .1       |
| .39       | .111-119-2     | ROLLER, LOADED RUNOUT   | .1       |
| .40       | .112-95-2      | SNAP RING, SMALLEY WH-314   | .2       |
| .41       | .74-37-2       | HEX HEAD CAP SCREW 1/2-13X1.00 INCH (FULL-THREAD)                 | .1       |
| .42       | .74-43-2       | SOCKET HEAD CAP SCREW 3/8-16 X 1.00 INCH (FULL-THREAD)            | .4       |
| .43       | .77-21-2       | WASHER, LOCK 3/8 INCH INTERNAL TOOTH                              | .4       |
| .44       | .74-220-2      | SOCKET HEAD CAP SCREW 3/8-16 X .63 INCH (FULL-THREAD)             | .4       |
| .45       | .98-410-2      | SPRING, LOAD ROLLER AIR BAG                                       | .1       |
| .46       | .98-303-2      | SPRING, HOOD  | .1       |
| .47       | .125-299-3     | SENSOR ASSEMBLY, HALL EFFECT                                      | .1       |
| .48       | .145-184-2     | FITTING, 1/4 INCH NPT ADAPTOR                                     | .1       |
| .49       | Field Purchase | ADHESIVE-RETAINING COMPOUND (Loctite #609)                        | A/R      |
| .50       | .77-26-2       | WASHER-FLAT 3/8 INCH  | .1       |



# WHEEL LIFT MECHANISM

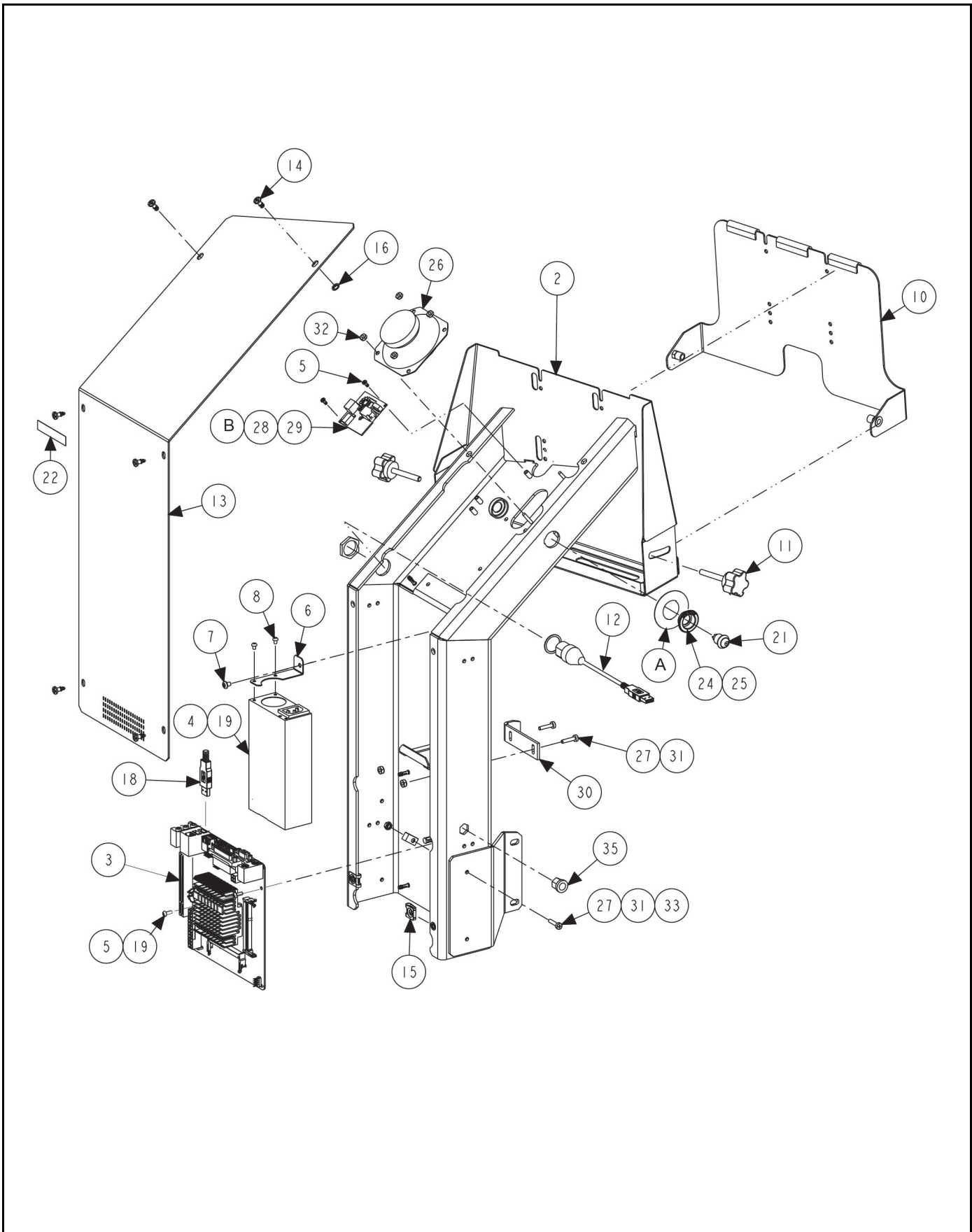
REFER TO NEXT SHEET FOR PARTS DESCRIPTION LISTING

## PARTS DESCRIPTION LISTING

Form BD07824-00, 04-23

Sheet 11 of 13

| Index No. | Part Number   | Description   | Qty. |
|-----------|---------------|---|------|
| 1         | 103-309-1     | ARM ASSEMBLY HDE WHEEL LIFT (Consists Of:)                | 1    |
| 2         | 11-1249-1-005 | SUPPORT, HD WHEEL LIFT PAINTED (Includes:)                | 1    |
| 3         | 130-174-2     | BEARING, SLEEVE 1.00 X 1.00 INCH                          | 4    |
| 4         | 97-459-2      | SHAFT, WHEEL LIFT SUPPORT                                 | 2    |
| 5         | 103-310-1-005 | ARM ASSEMBLY, HDE WHEEL LIFT UPPER                        | 1    |
| 6         | 98-388-2      | AIRBAG  | 1    |
| 7         | 77-21-2       | WASHER, LOCK 3/8 INCH INTERNAL TOOTH                      | 4    |
| 8         | 11-1022-1-005 | SUPPORT ASSEMBLY, CRADLE PAINTED                          | 1    |
| 9         | 75-123-2      | HEX HEAD CAP SCREW 1/4-20X2.00 INCH                       | 2    |
| 10        | 76-368-2      | NUT, LOCK 1/4-20 NYLON INSERT                             | 2    |
| 11        | 74-428-2      | SOCKET HEAD CAP SCREW .375-16X.75 INCH                    | 2    |
| 12        | 74-240-2      | HEX HEAD CAP SCREW 3/8-16X1.25 INCH GRADE 5               | 2    |
| 13        | 112-88-2      | SNAP RING, TRUARC 5100-100                                | 4    |
| 14        | 145-365-2     | FITTING-1/4 FPT 1/4 INCH PTC                              | 1    |
| 15        | 161-53-1-005  | PEDESTAL, WHEEL LIFT PAINTED                              | 1    |
| 16        | 162-108-2     | LOCTITE #545 THREAD SEALANT                               | 1    |
| 17        | 145-406-2     | PIPE-NIPPLE 1/4 NPT X 1.50 INCH LENGTH                    | 1    |
| 18        | 103-311-1-005 | ARM ASSEMBLY, HDE WHEEL LIFT LOWER                        | 1    |
| 19        | 74-522-2      | HEX HEAD CAP SCREW 3/8-16X.75 INCH, GRADE 5 (Full-Thread) | 6    |
| 20        | 121-205-005   | BLOCK, ATTACHMENT PLATE PAINTED                           | 2    |
| 21        | 130-174-2     | BEARING, SLEEVE 1.00 X 1.00 INCH                          | 2    |
| 22        | 98-562-2      | DAMPER, HDE WHEEL LIFT                                    | 1    |
| 23        | 74-48-2       | HEX HEAD CAP SCREW 3/4-10 X 3.00 INCH FULL-THREAD         | 1    |
| 24        | 76-39-2       | NUT, HEX 3/4-10   | 1    |
| 25        | 74-653-2      | HEX HEAD CAP SCREW 3/4-10 X 2.50 INCH GRADE 5 FULL-THREAD | 1    |



## TOUCH SCREEN SUPPORT

REFER TO NEXT SHEET FOR PARTS DESCRIPTION LISTING

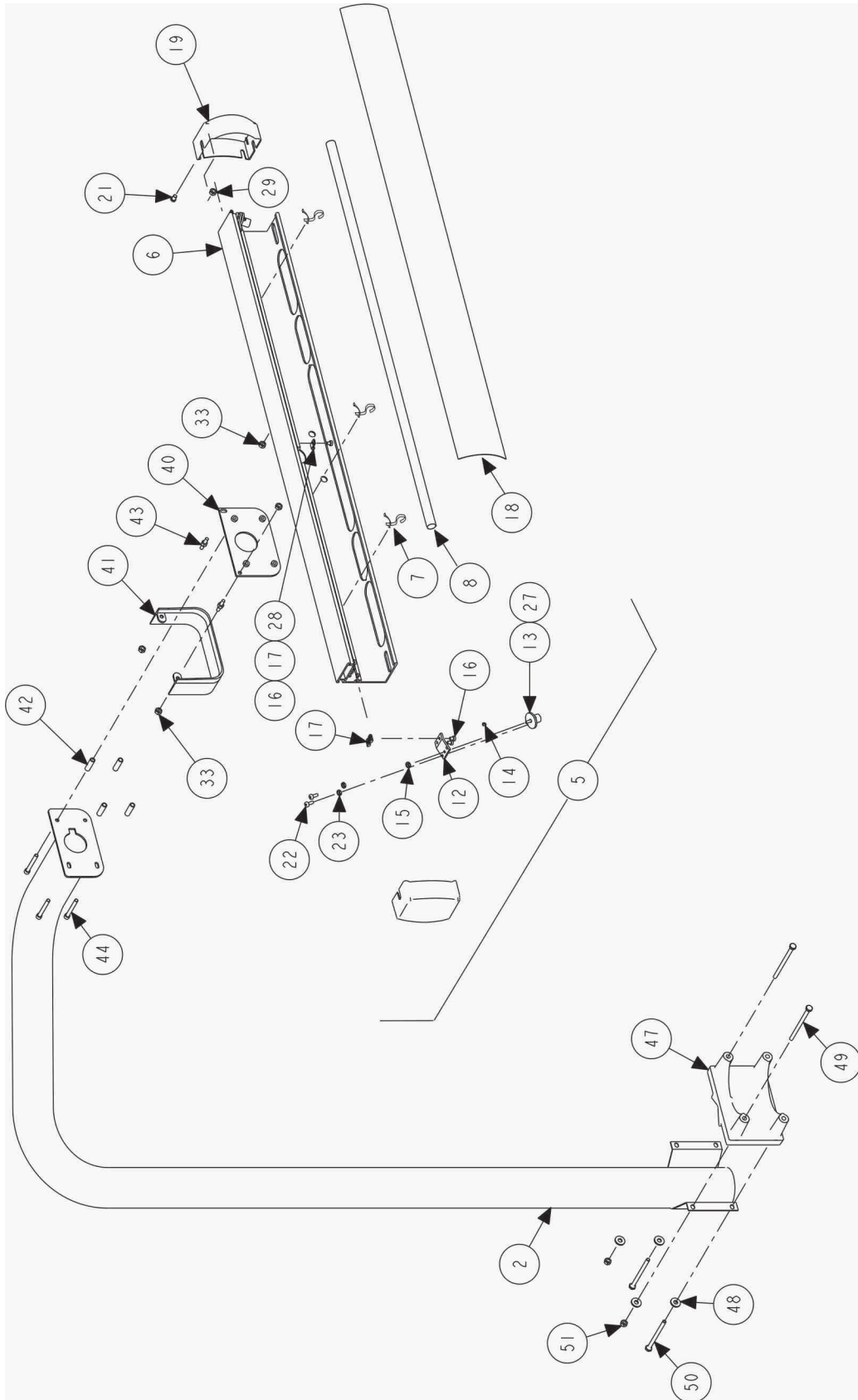
## PARTS DESCRIPTION LISTING

Form BD07824-00, 04-23

Sheet 12 of 13

| Index No. | Part Number   | Description  | RFE Qty. |
|-----------|---------------|--|----------|
| 1         | 11-1786-1     | ASSEMBLY DISPLAY SUPPORT RFE (Consisting Of:)                    | 1        |
| 2         | 11-1784-1-005 | ASSEMBLY - DISPLAY SUPPORT, BALANCER                             | 1        |
| 3         | 45-1545-2     | PCB - J1900 Mini-ITX motherboard                                 | 1        |
| 4         | 232-373-2     | FLEX ATX 150W POWER SUPPLY                                       | 1        |
| 5         | 75-24-2       | ROUND HEAD MACHINE SCREW 6-32 X .38 INCH                         | 3        |
| 6         | 14-1307       | BRACKET - FLEX ATX   | 1        |
| 7         | 75-582-2      | SOCKET BUTTON HEAD CAP SCREW -10-32 X .25 INCH                   | 1        |
| 8         | 75-332-2      | ROUND HEAD MACHINE SCREW 6-32 X .19 INCH                         | 2        |
| 9         | Not Used      |  | -        |
| 10        | 171-349-1     | ASSEMBLY - PANEL, DISP MT, TILTABLE                              | 1        |
| 11        | 34-208-2      | KNOB - 1/4-20 X 1/2 INCH   | 2        |
| 12        | 38-1337-2     | CONNECTOR - USB-A BULKHEAD TO HEADER                             | 1        |
| 13        | 69-1372-005   | COVER - DISPLAY SUPPORT, TOUCH                                   | 1        |
| 14        | 75-775-2      | SCREW - QUARTER TURN, SIZE 280                                   | 6        |
| 15        | 76-490-2      | NUT - QUARTER TURN, CLIP-ON                                      | 6        |
| 16        | 41-205-2      | RETAIN - QUARTER-TURN, 82 SERIES                                 | 6        |
| 17        | 75-735-2      | SCREW - PAN HEAD MACHINE SCREW #6-32 X .56 INCH                  | 4        |
| 18        | 38-963-2      | CABLE - USB 2.0 A/B 1METER                                       | 1        |
| 19        | 37-704-1      | WIRE ASSEMBLY - DAQ TO POWER, 4 PIN EXT                          | 1        |
| 20        | 94-45-2       | TIE - CABLE (BLK)  | 4        |
| 21        | 18-565-2      | SWITCH ASSEMBLY - BALANCER MOTHER BOARD POWER                    | 1        |
| 22        | 128-1399-2    | DECAL - DISPLAY COVER GEN IV                                     | 1        |
| 23        | BLD-DRIVES    | PROGRAM AND DATA FLASH DRIVES (Not Illustrated)                  | 1        |
| 24        | 105-639-2     | HOUSING - POWER BUTTON, OUTER                                    | 1        |
| 25        | 105-640-2     | HOUSING - POWER BUTTON, INNER                                    | 1        |
| A         | 128-1817-2    | DECAL - BALANCER POWER OFF                                       | 1        |
| 26        | 109-173-1     | SPEAKER ASSEMBLY - 3.5 INCH W CABLE                              | 1        |
| 27        | 76-71-2       | NUT - KEPS 8-32  | 3        |
| 28        | 45-1695-1     | PCA - MONO AUDIO AMP G3  | 1        |
| 29        | 37-825-1      | WIRE ASM- AUDIO AMP PW PH  | 1        |
| B         | 38-768-2      | CABLE - STEREO JUMPER  | 1        |
| 30        | 216-118-005   | HOOK - WEIGHT TRAY   | 1        |
| 31        | 75-414-2      | PAN HEAD MACHINE SCREW 8-32 X .75 INCH                           | 3        |
| 32        | 76-84-2       | NUT - KEPS 6-32  | 4        |
| 33        | 12-145-2      | CLAMP - CABLE 1/4 INCH DIAMETER                                  | 1        |
| 34        | Not Used      |  | -        |
| 35        | 76-296-2      | NUT - INSERT 3/8-16 HEX  | 1        |
| 36        | 75-758-2*     | SOCKET BUTTON HEAD CAP SCREW 1/4-20 X .63 INCH (Not Illustrated) | 4        |
| 37        | 76-414-2*     | NUT - HEX INSERT 1/4-20 (Not Illustrated)                        | 4        |
| 38        | 227-109-2     | DISPLAY, 22 INCH LCD WITH RESISTIVE TOUCH (Not Illustrated)      | 1        |
| 39        | 75-668-2      | PAN HEAD MACHINE SCREW M4 X .7 X 10 mm (Not Illustrated)         | 2        |

\* Hardware to attach support to tub. (Not Illustrated)



## TOP DEAD CENTER LASER SYSTEM

REFER TO NEXT SHEET FOR PARTS DESCRIPTION LISTING

## PARTS DESCRIPTION LISTING

Form BD07824-00, 04-23

Sheet 13 of 13

| Index No. | Part Number    | Description   | Qty. |
|-----------|----------------|---|------|
| 1         | 20-3765-1      | KIT - TDC LASER, SINGLE BRKT LED  | 1    |
| 2         | 16-912-1-005   | TUBE ASSEMBLY, TDC LASER SUPPORT  | 1    |
| 5         | 105-787-1      | HOUSING, TDC LASER HEADER ASSEMBLY LED G2 (Consists Of:)                  | 1    |
| 6         | 105-514-2      | HOUSING, TDC LASER HEADER   | 1    |
| 7         | 35-212-2*      | LAMP, LED, 12 VOLT, 36 INCH   | 1    |
| 8         | 117-230-2*     | HANGER, LED STRIP   | 3    |
| 12        | 14-1130-2      | BRACKET, TDC LASER MOUNT  | 2    |
| 13        | 105-530-1      | HOUSING, TDC LASER ASSEMBLY   | 2    |
| 14        | 98-427-2       | SPRING, TDC LASER ADJUSTMENT  | 2    |
| 15        | 76-61-2        | NUT, KEPS 10-32   | 2    |
| 16        | 75-608-2       | PAN HEAD MACHINE SCREW 10-32 X .31 INCH                                   | 5    |
| 17        | 76-382-2       | NUT-T   | 5    |
| 18        | 190-192-2      | SIGN, TDC LASER SYSTEM  | 1    |
| 19        | 69-1204-2      | COVER, TDC LASER END CAP  | 2    |
| 20        | Field Purchase | ADHESIVE, LOCTITE 242   | A/R  |
| 21        | 75-535-2       | LOW HEAD SOCKET CAP SCREW 1/4-20 X .38 INCH                               | 2    |
| 22        | 75-161-2       | PAN HEAD MACHINE SCREW 10-32 X .50 INCH                                   | 4    |
| 23        | 76-11-2        | NUT, HEX 10-32  | 4    |
| 24        | 128-1155-2     | DECAL, LASER COMPLIANCE 2M  | 1    |
| 25        | 128-1308-2     | DECAL, RX CABLE WRAP, RIGHT (Not Illustrated)                             | 1    |
| 26        | 128-1309-2     | DECAL, RX CABLE WRAP, LEFT (Not Illustrated)                              | 1    |
| 27        | 77-35-2        | WASHER, FLAT 5/8 INCH   | 2    |
| 28        | 12-158-2       | CLAMP, CABLE NYLON .312 INCH DIAMETER                                     | 5    |
| 29        | 76-13-2        | NUT, HEX 1/4-20   | 4    |
| 33        | 76-13-2        | NUT, HEX 1/4-20   | 6    |
| 35        | 38-1206-2      | CABLE, PC POWER SUPPLY ADAPTOR (Not Illustrated)                          | 1    |
| 36        | 77-45-2        | WASHER-FLAT 3/16 (Not Illustrated)  | 2    |
| 37        | 76-159-2       | NUT, KEPS 3/8 - 16 (Not Illustrated)                                      | 4    |
| 40        | 51-2332-1-005  | PLATE, TDC HAMMERHEAD MOUNT ASSEMBLY                                      | 1    |
| 41        | 69-1271-2      | COVER, TDC ADJUSTMENT   | 1    |
| 42        | 98-443-2       | SPRING, TDC LASER ADJUSTMENT  | 4    |
| 43        | 134-141-2      | STUD, 1/4-20 DOUBLE ENDED, BRASS  | 2    |
| 44        | 75-877-3       | SOCKET HEAD CAP SCREW 1/4-20 X 2.00 INCH NYLON                            | 4    |
| 45        | 75-535-2       | LOW HEAD SOCKET CAP SCREW 1/4-20 X .38 INCH (Not Illustrated)             | 2    |
| 46        | 37-693-1       | WIRE ASM, GEN3 LED HAMMERHEAD (not in kit) (for retro GEN 3) (Not Illus.) | 1    |
| 47        | 14-1737-2      | BRACKET, TDC LASER ONE PIECE  | 1    |
| 48        | 77-67-2        | WASHER, FLAT 1/4 INCH   | 4    |
| 49        | 75-918-2       | HEX HEAD CAP SCREW 1/4-20 X 3.5 INCH (GRADE 8)                            | 2    |
| 50        | 75-918-2       | HEX HEAD CAP SCREW 1/4-20 X 3.5 INCH (GRADE 8)                            | 2    |
| 51        | 76-367-2       | NUT, FLANGE 1/4 - 20  | 2    |
| 52        | 46-805-2       | SPACER, 1/4 IN, SLOTTED (Correction to meet TDC) (Not Illustrated)        | 2    |

\* Use retrofit kit 20-3766-1 to replace obsoleted LED lamp with current light strip.