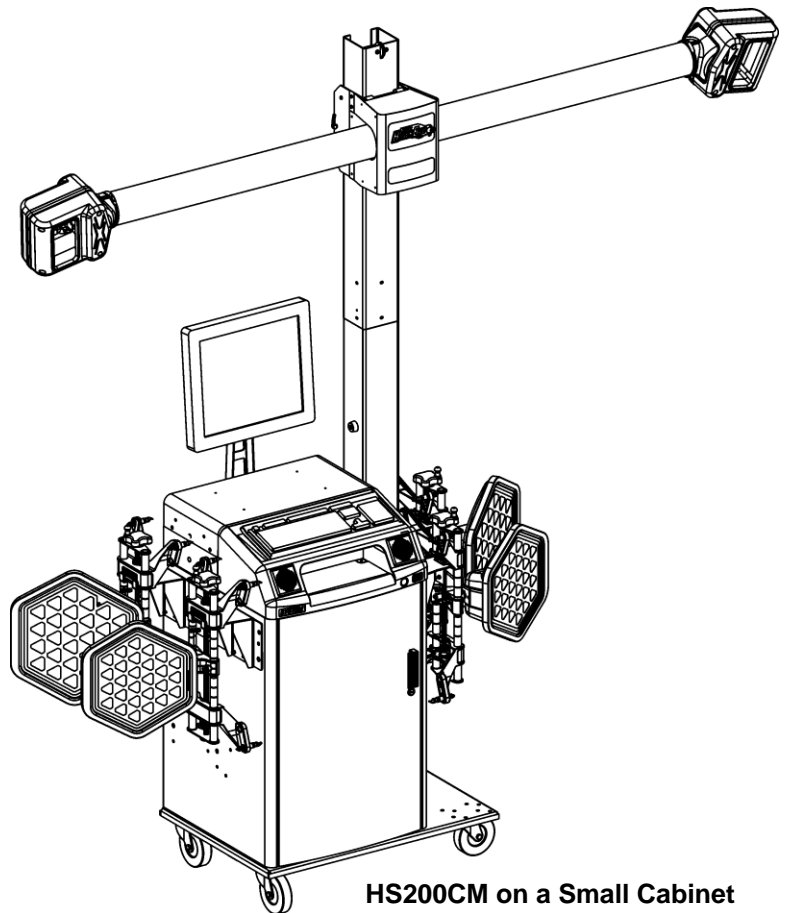
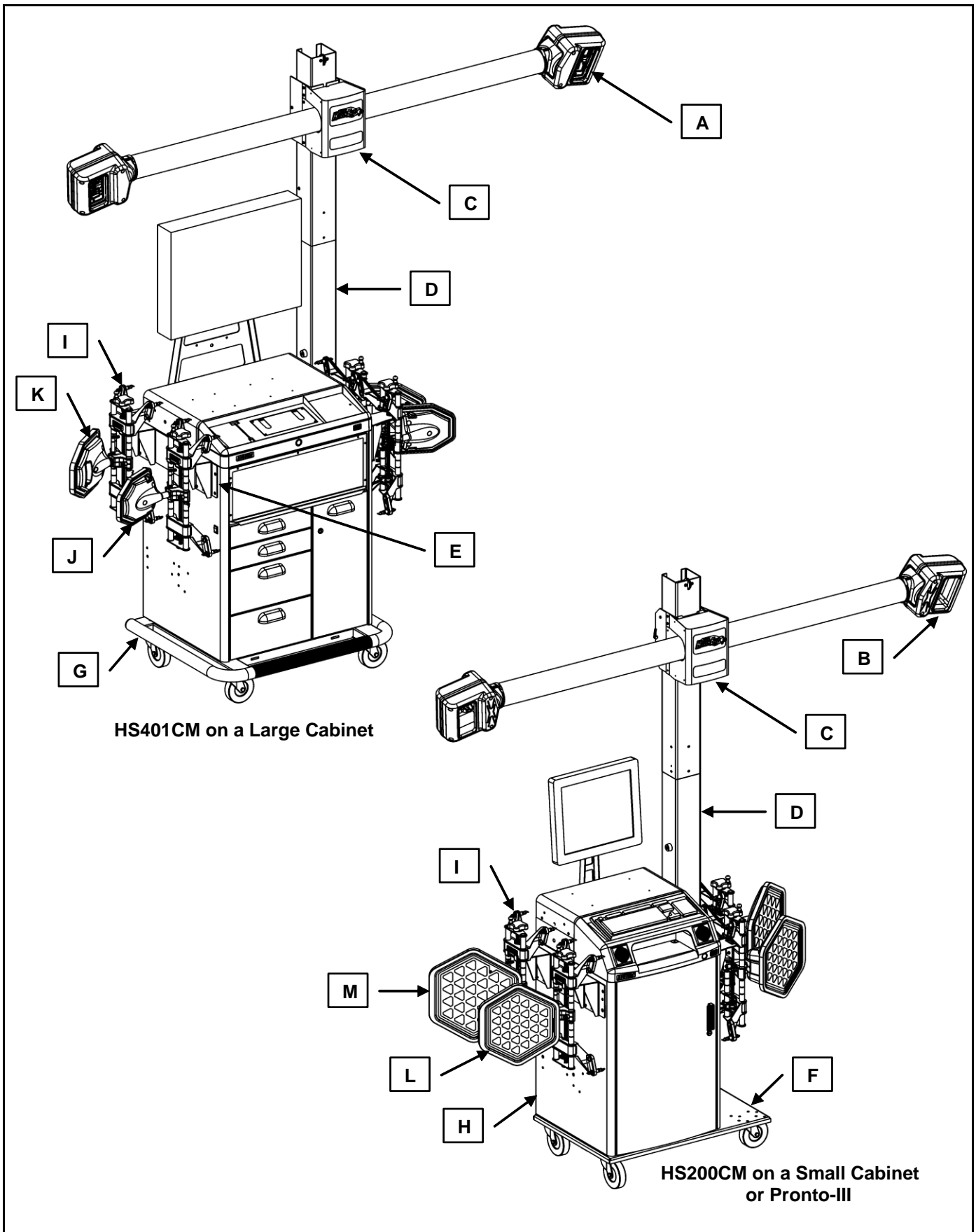


HS401CM on a Large Cabinet



**HS200CM on a Small Cabinet
or Pronto-III**

CABINET MOUNT SENSORS: HS401CM, HS200CM, PRONTO-III

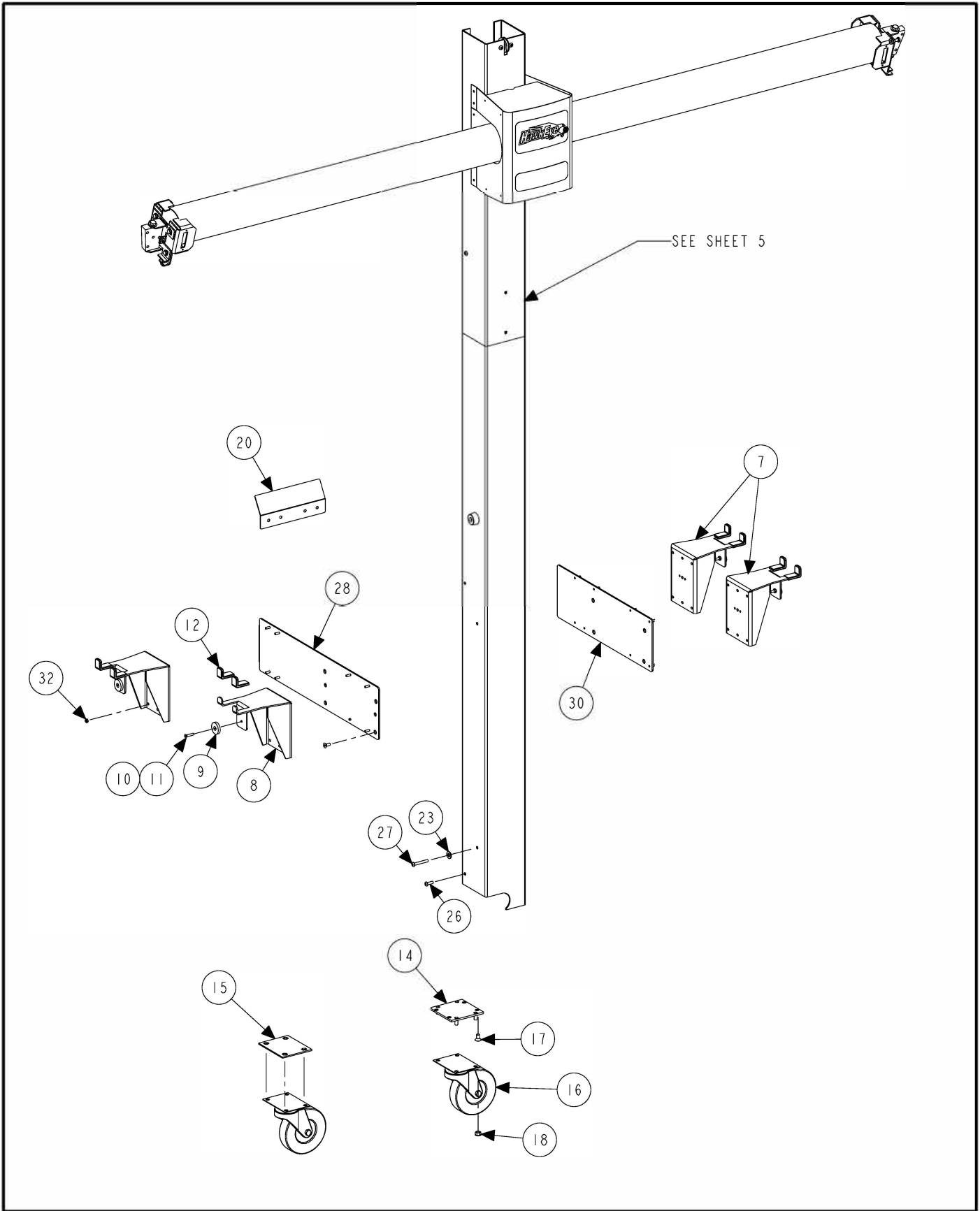


CABINET MOUNT SENSORS: HS401CM, HS200CM, PRONTO-III

REFER TO NEXT SHEET FOR PARTS DESCRIPTION LISTING

PARTS DESCRIPTION LISTING

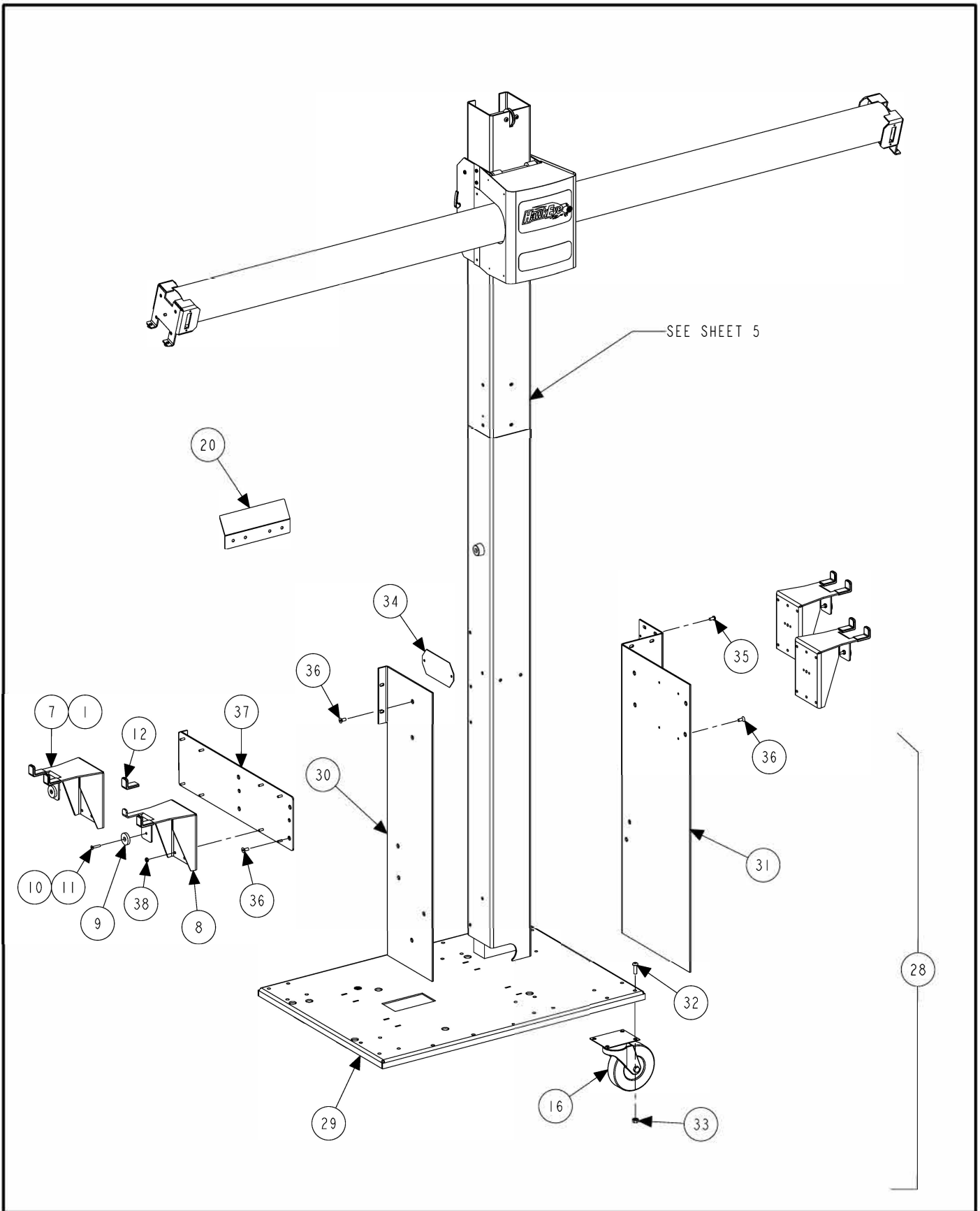
Index No.	Part Number	Description
A	125-433-1	SENSOR, 4 CAMERA 5 MEG RIGHT (Sheet 6)
B	125-412-1	SENSOR, HS200 RIGHT CAMERA ASSEMBLY (See Sheet 7)
C	11-1326-1	SUPPORT, CM / SAM CARRIER 3 POINT (Sheet 5)
D	16-971-1	TUBE CM LOWER NO PIN ASSEMBLY
E	51-2449-1-005	PLATE, ADAPTOR SUPPORT CM LEFT (Sheet 3)
F	72-456-1-005	BASE, CM S SUPPORT (Sheet 4)
G	WA240	WA240 SERIES MOBILE CABINET (See Form 4-153)
OR	WA140	WA140 SERIES MOBILE CABINET (See Form 4-149)
H	PA131	PA131 SERIES MOBILE CABINET (See Form 4-133)
OR	WA130	WA130 SERIES MOBILE CABINET (See Form 4-151)
OR	WA230	WA230 SERIES MOBILE CABINET (See Form 4-152)
I	175-325-1	ADAPTOR, SELF CENTERING 20 INCH (See Form 4-110)
J	214-128-1	TARGET ASSEMBLY, LEFT FRONT (Sheet 8)
K	214-131-1	TARGET ASSEMBLY, LEFT REAR (Sheet 8)
L	214-114-1	TARGET ASSEMBLY, FRONT PLASTIC RH (Sheet 9)
M	214-112-1	TARGET ASSEMBLY, REAR PLASTIC RH (Sheet 9)
N	20-2307-1	KIT, HAWKEYE TURNPLATE BRIDGE (Not Illustrated) (Consisting Of:)
O	57-848-2 (TWO)	BRIDGE, TURNPLATE 1.5 INCH / 50 MM (Not Illustrated)



LARGE CABINET CM
 REFER TO NEXT SHEET FOR PARTS DESCRIPTION LISTING

PARTS DESCRIPTION LISTING

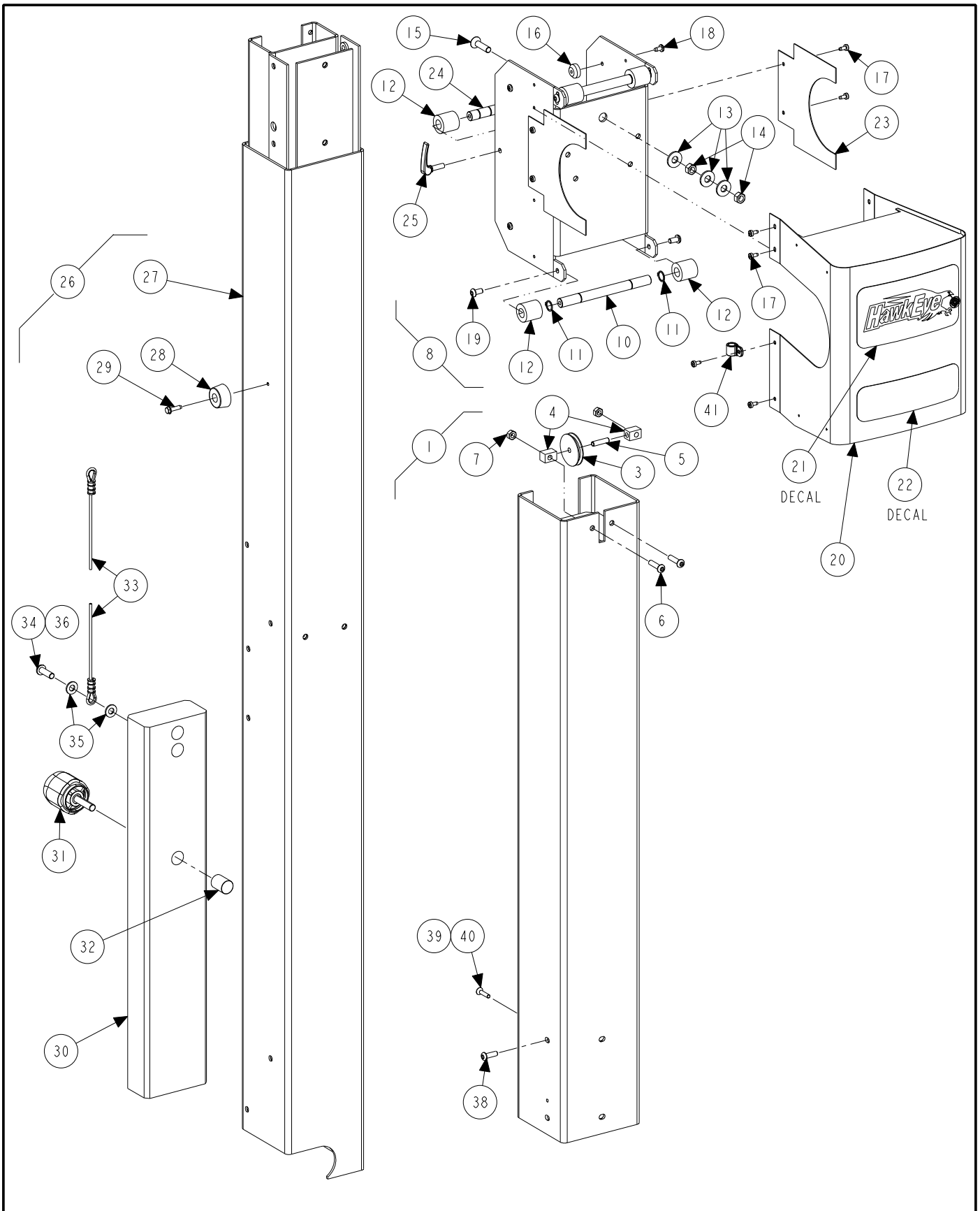
Index No.	Part Number	Description	Qty.
1	20-2375-1	HAWKEYE, ADAPTOR SUPPORT LIFT MOUNT (Not Illustrated) (Consisting Of:)	1
2	62-50-2	FOOT, 1/4 INCH RUBBER 1.25 INCH DIAMETER (Not Illus.)	4
3	76-17-2	NUT, GRIP 1/4-20 (Not Used)	4
4	75-728-2	HEX HEAD CAP SCREW 1/4-20 X 1.25 INCH GRADE 5 (Not Used)	4
5	76-477-2	NUT, 1/4-20 RECTANGULAR (Not Used)	4
6	75-413-2	SCREW, SELF-TAPPING 10-32 X .50 INCH (Not Used)	16
7	11-1345-1	SUPPORT, DUAL POSITION-ADAPTOR MOUNT (Consisting Of:)	4
8	11-1347	SUPPORT, DUAL-POSITION MOUNT	1
9	62-50-2	FOOT-1/4 INCH RUBBER-1.25 INCH DIAMETER	1
10	75-93-2	FLAT HEAD SOCKET CAP SCREW 10-32 X 1.00 INCH	1
11	76-61-2	NUT, KEPS 10-32	1
12	106-168-2	SLEEVE, RECTANGLE	2
13	20-2500-1	KIT, HARDWARE HAWKEYE CM (Not Illustrated) (Consisting Of:)	1
14	51-2110-1-005	PLATE ASSEMBLY CASTER ADAPTOR	1
15	51-2111-005	PLATE, CASTER SPACER	3
16	158-49-2	CASTER, 5 INCH RIGID PLATE	2
17	74-298-2	FLAT HEAD SOCKET CAP SCREW 5/16-18 X .63 INCH	4
18	76-177-2	NUT, KEPS 5/16-18	4
19	75-397-2	SOCKET BUTTON HEAD CAP SCREW 8-32 X .38 FT HD (See Sheet 6)	4
20	14-1019-005	BRACKET-REMOTE FIXED	1
21	75-574-2	SOCKET BUTTON HEAD CAP SCREW-1/4-20 X .75 INCH (See Sheet 5)	13
22	12-163-2	CLAMP, P CLIP 3/8 INCH INNER DIAMETER RUBBER (See Sheet 5)	2
23	77-144-2	WASHER, FENDER 1/4 INCH	2
24	75-676-2	FLAT HEAD SOCKET CAP SCREW 10-32 X 3/4 INCH (See Sheet 5)	2
25	76-61-2	NUT, KEPS 10-32 (See Sheet 5)	2
26	75-481-2	SOCKET BUTTON HEAD CAP SCREW 1/4-20 X .50 INCH	2
27	75-452-2	SOCKET BUTTON HEAD CAP SCREW 1/4-20 X 1.50 INCH	2
28	20-2492-1	KIT, HS CM ADAPTOR SUPPORT, NO SPEAKER (Not Illus.) (Consisting Of:)	1
29	51-2449-1-005	PLATE, ADAPTOR SUPPORT CM LEFT	1
30	51-2316-1-005	PLATE, ADAPTOR SUPPORT CM ASSEMBLY RIGHT	1
31	75-214-2	FLAT HEAD SOCKET CAP SCREW 1/4-20X1.00 INCH	8
32	76-61-2	NUT, KEPS 10-32	16



SMALL CABINET CM
 REFER TO NEXT SHEET FOR PARTS DESCRIPTION LISTING

PARTS DESCRIPTION LISTING

Index No.	Part Number	Description	Qty.
1	20-2375-1	HAWKEYE, ADAPTOR SUPPORT LIFT MOUNT (Not Illustrated) (Consisting Of:)	1
2	62-50-2	FOOT, 1/4 INCH RUBBER 1.25 INCH DIAMETER (Not Illus.)	4
3	76-17-2	NUT, GRIP 1/4-20 (Not Used)	4
4	75-728-2	HEX HEAD CAP SCREW 1/4-20 X 1.25 INCH GRADE 5 (Not Used)	4
5	76-477-2	NUT, 1/4-20 RECTANGULAR (Not Used)	4
6	75-413-2	SCREW, SELF-TAPPING 10-32 X .50 INCH (Not Used)	16
7	11-1345-1	SUPPORT, DUAL POSITION-ADAPTOR MOUNT (Consisting Of:)	4
8	11-1347	SUPPORT, DUAL-POSITION MOUNT	1
9	62-50-2	FOOT-1/4 INCH RUBBER-1.25 INCH DIAMETER	1
10	75-93-2	FLAT HEAD SOCKET CAP SCREW 10-32 X 1.00 INCH	1
11	76-61-2	NUT, KEPS 10-32	1
12	106-168-2	SLEEVE, RECTANGLE	2
13	20-2500-1	KIT-HRDWR-HAWKEYE-CM (Consisting of:)	1
14	51-2110-1-005	PLATE ASSEMBLY CASTER ADAPTOR (Not Used)	1
15	51-2111-005	PLATE, CASTER SPACER (Not Used)	3
16	158-49-2	CASTER, 5IN RIGID PLATE	2
17	74-298-2	FLAT HEAD SOCKET CAP SCREW 5/16-18 X .63 INCH	4
18	76-177-2	NUT, KEPS 5/16-18 ZP	4
19	75-397-2	SOCKET BUTTON HEAD CAP SCREW 8-32 X .38 INCH FTHD (See Sheet 6)	4
20	14-1019-005	BRACKET, REMOTE FIXED	1
21	75-574-2	SOCKET BUTTON HEAD CAP SCREW-1/4-20 X .75 INCH (See Sheet 5)	13
22	12-163-2	CLAMP-P CLIP 3/8 INCH INNER DIAMETER RUBBER (See Sheet 5)	2
23	77-144-2	WASHER, FENDER 1/4 INCH	2
24	75-676-2	FLAT HEAD SOCKET CAP SCREW 10-32 X 3/4 INCH (See Sheet 5)	2
25	76-61-2	NUT-KEPS 10-32 (See Sheet 5)	2
26	75-481-2	SOCKET BUTTON HEAD CAP SCREW 1/4-20 X .50 INCH	2
27	75-452-2	SOCKET BUTTON HEAD CAP SCREW 1/4-20X1.50 INCH	2
28	20-2479-1	KIT, S CABINET CM (Consisting of:)	1
29	72-456-1-005	BASE, CM S SUPPORT	1
30	71-198-PPP	SIDE, CM S PLATE REAR	1
31	71-199-1-PPP	SIDE, CM S PLATE ASSEMBLY	1
32	74-376-2	SOCKET HEAD CAP SCREW 5/16-18 X 7/8 INCH	16
33	76-177-2	NUT, KEPS 5/16-18	8
34	51-2460-005	CARTRIDGE BLOCKOFF PLATE	1
35	75-481-2	SOCKET BUTTON HEAD CAP SCREW 1/4-20 X .50 INCH	8
36	75-745-2	FLAT HEAD SOCKET CAP SCREW-1.4-20 X .50 INCH	16
37	51-2401-1-005	SUPPORT, MOUNT S CAB ASSEMBLY - LEFT	1
38	76-61-2	NUT-KEPS 10-32	16

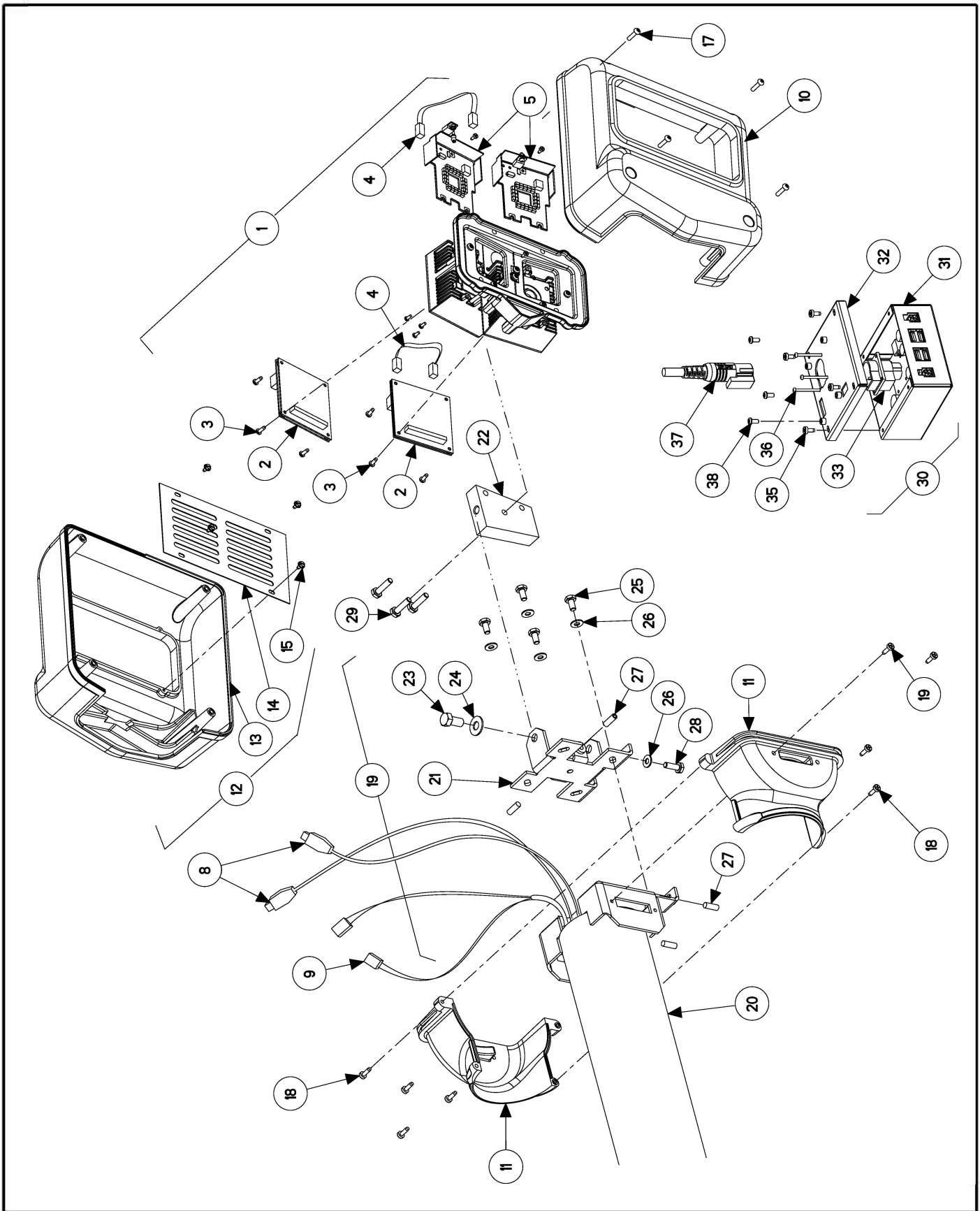


POST AND CARRIER

REFER TO NEXT SHEET FOR PARTS DESCRIPTION LISTING

PARTS DESCRIPTION LISTING

Index No.	Part Number	Description	Qty.
1	16-923-1	TUBE, CM/SAM UPPER ASSEMBLY	1
2	16-922-1-PPP	TUBE, CM/SAM UPPER	1
3	107-123-2	PULLEY, 1/8-WIRE STEEL	1
4	121-244-2	BLOCK, SHEAVE UPPER PULLEY CM	2
5	135-319-2	PIN, DOWELL .25 X 1.00 INCH	1
6	75-617-2	SOCKET BUTTON HEAD CAP SCREW 1/4-20 X 1.00 INCH	2
7	76-17-2	NUT, GRIP 1/4-20	2
8	11-1326-1	SUPPORT, CM/SAM-CARRIER 3 POINT	1
9	11-1325-005	SUPPORT, CM CARRIER REAR 3 POINT	1
10	97-575-2	SHAFT, LOWER DUAL ROLLER CM	2
11	112-115-2	SNAP RING, TRUARC#5100-50	6
12	111-127-2	ROLLER, REAR CONSOLE MT	6
13	77-24-2	WASHER, FLAT 5/16 INCH	3
14	76-32-2	NUT, GRIP 5/16-18	2
15	74-392-2	FLAT HEAD SOCKET CAP SCREW 5/16-18 X 1.25 INCH	1
16	104-162-2	GUIDE, BUMPER CARRIER CM	4
17	75-543-2	SCREW, SELF-TAPPING 8-32 X .38 INCH	12
18	75-522-2	SCREW, SELF-TAPPING 10-32 X .38 INCH	4
19	75-481-2	SOCKET BUTTON HEAD CAP SCREW 1/4-20 X .50 INCH	5
20	69-1266-1	COVER ASSEMBLY, HAWKEYE CM (Includes:)	1
21	128-1178-2	DECAL, HUNTER LOGO CM	1
22	128-1177-2	DECAL, HAWKEYE CM	1
23	51-2318-005	PLATE, CARRIER TUBE CM	2
24	97-596-2	SHAFT, REAR-ROLLER CM	1
25	12-210-2	CLAMP, 1/4-20 CM CARRIER	1
26	16-971-1	TUBE CM LOWER NO PIN ASSEMBLY	1
27	16-970-1-PPP	TUBE, CM WR NO-PIN WELD	1
28	62-21-2	FOOT, PLASTIC	2
29	75-408-2	SCREW, SELF-TAPPING 10-32 X .75 INCH	2
30	65-87-2	WEIGHT, COUNTER BALANCE CARRIER CM	1
31	34-190-2	KNOB, CARRIER COUNTER BALANCE CM	1
32	42-45-2	PLUG, FRICTION COUNTER BALANCE CM	1
33	39-71-3	CABLE, CM SHORT COUNTER WEIGHT	1
34	74-270-2	SOCKET BUTTON HEAD CAP SCREW 5/16-18 X 1.00 INCH FTHD	1
35	77-20-2	WASHER, FLAT 5/16 INCH	2
36	Field Purchase	ADHESIVE, THREAD LOCKING (LOCTITE #271 or PERMA BOND # HM128)	A/R
37	94-13-2	TIE-CABLE (Not Illustrated)	4
38	75-574-2	SOCKET BUTTON HEAD CAP SCREW-1/4-20 X .75 INCH	6
39	75-676-2	FLAT HEAD SOCKET CAP SCREW 10-32 X 3/4 INCH	2
40	76-61-2	NUT, KEPS 10-32	2
41	12-163-2	CLAMP, P CLIP 3/8 INCH ID RUBBER	2

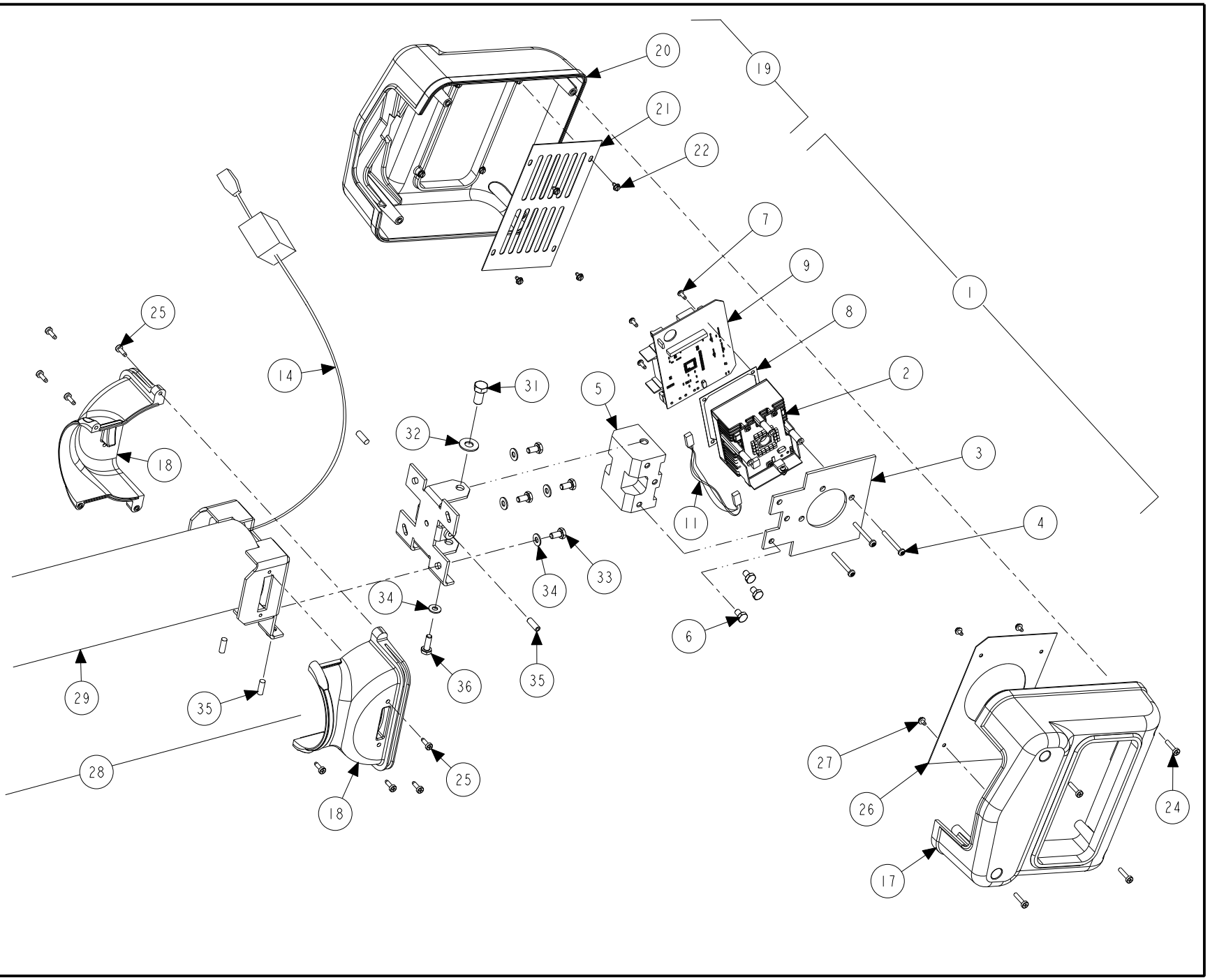


HS401 CAMERAS

REFER TO NEXT SHEET FOR PARTS DESCRIPTION LISTING

PARTS DESCRIPTION LISTING

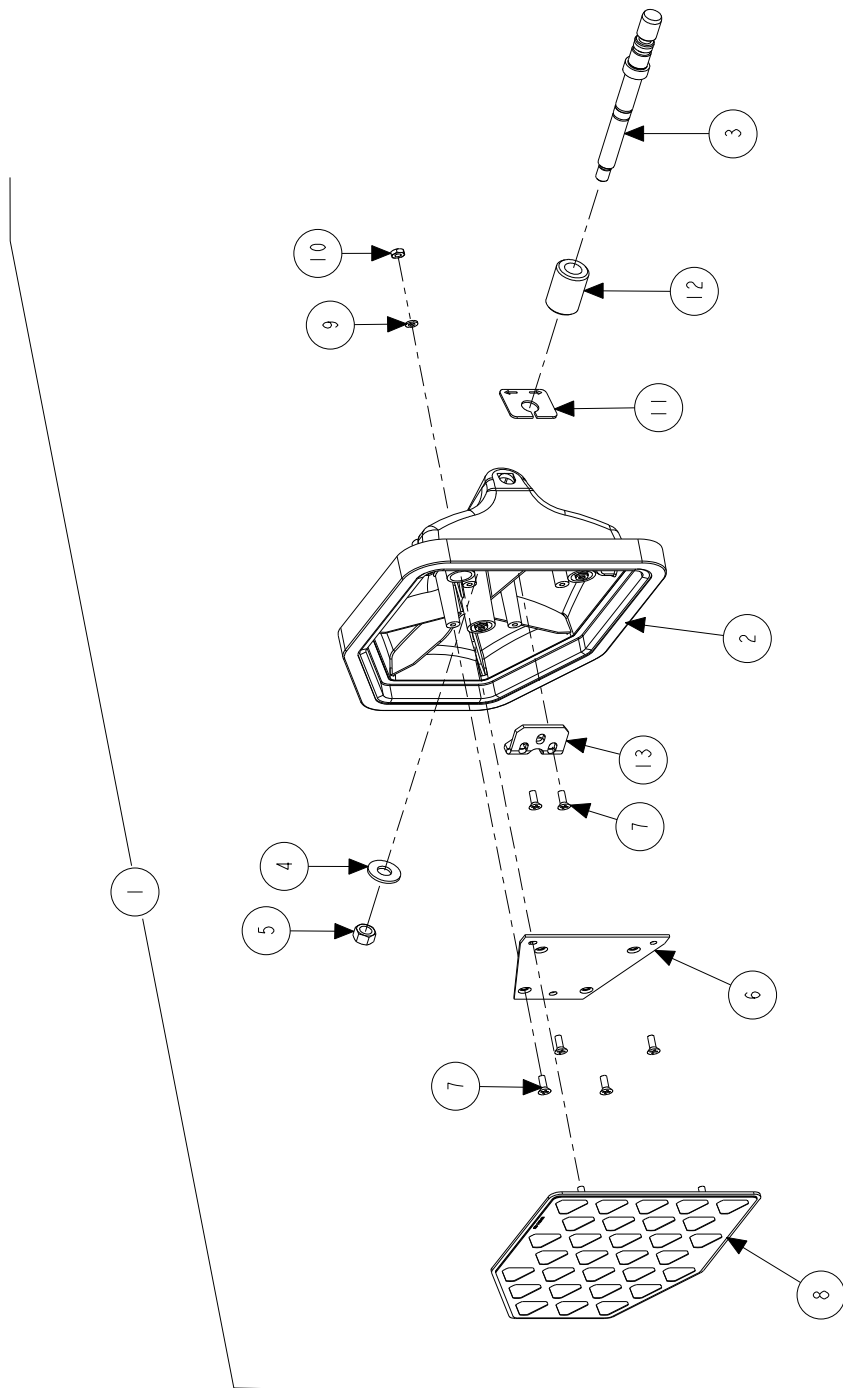
Index No.	Part Number	Description	Left Quantity	Right Quantity
1	125-433-1	SENSOR, 4 CAMERA 5 MEG RIGHT (Consisting Of:)		1
OR	125-432-1	SENSOR, 4 CAMERA 5 MEG LEFT (Consisting Of:) (Not Illustrated)	1	
2	45-1285-1	5 MEG CAMERA CONTROL	1	1
3	75-500-2	SCREW, SELF TAPPING 6-32 X .38 INCH	4	4
4	38-1111-1	ASSEMBLY, DSP600 EMITTER BOARD	2	2
5	45-1129-1	PCA, DSP600 750NM EMITTER SMT	2	2
6	24-160-2	NAMEPLATE, CAMERA SENSOR PATENT (Not Illustrated)	1	1
7	24-51-2	NAMEPLATE, HUNTER MODEL AND PART (Not Illustrated)	1	1
8	38-954-2	CABLE, USB 2.0 A/B 2METER	2	2
9	37-526-1	WIRE ASSEMBLY, DSP600L EMITTER POWER	1	1
10	69-1061-2	COVER, CAMERA DSP600	1	1
11	69-1064-2	COVER, CAMERA CLEVIS DSP600	2	2
12	69-1063-1	COVER, ASSEMBLY BACK DSP600 (Consisting Of:)	1	1
13	69-1079-3	COVER, CAMERA BACK DSP600	1	1
14	69-1062-005	COVER, CAMERA PLATE	1	1
15	75-362-2	SCREW, SELF-TAPPING 6-32 X .25 INCH	4	4
16	Not Used	Not Used	-	-
17	75-414-2	PAN HEAD MACHINE SCREW 8-32 X 3/4 INCH	4	4
18	75-441-2	SCREW, SELF-TAPPING 8-32 X .50 INCH	8	8
19	16-889-1	TUBE ASSEMBLY, CAMERA SUPPORT CM (Consisting Of:)		1
20	16-888-1-005	TUBE ASSEMBLY, CAMERA SUPPORT CM		1
21	178-33-1-005	COUPLER, CAMERA DSP600 WELD		2
22	121-214-2	BLOCK-CAMERA MOUNT		2
23	74-59-2	HEX HEAD CAP SCREW 3/8-16 X .75 INCH, FULL-THREAD		2
24	77-65-2	WASHER, FLAT 3/8 INCH, SPECIAL		2
25	75-23-2	HEX HEAD CAP SCREW 1/4-20 X .50 INCH FULL-THREAD		8
26	77-67-2	WASHER-FLAT 1/4 INCH		10
27	75-241-2	SOCKET SET SCREW 1/4-20 X 3/4 INCH, OVAL POINT		8
28	75-29-2	HEX HEAD CAP SCREW 1/4-20 X .75 INCH, FULL-THREAD		2
29	75-22-2	HEX HEAD CAP SCREW 1/4-20 X 1.00 INCH FTHD		6
30	67-667-1	BOX, USB HUB BOARD ASSEMBLY (Consists Of:)		1
31	67-666-1	BOX, ASSEMBLY USB HUB		1
32	69-1081-1	LID, ASSEMBLY USB HUB		1
33	45-1023-1-1	PCA, VCS USB2 HUB (Field Replacement)		1
34	75-162-2	ROUND HEAD MACHINE SCREW 6-32 X .31 INCH		4
35	75-446-2	SCREW, SELF TAPPING 8-32 X 3/8 INCH		4
36	75-384-2	ROUND HEAD MACHINE SCREW 4-40 X 1.50 INCH		3
37	38-957-3	CABLE ASSEMBLY, USB AND BURNDY		1
38	75-397-2	SOCKET BUTTON HEAD CAP SCREW 8-32 X .38 FTHD (See Sheet 6)		4



HS200 AND PRONTO III CAMERAS
 REFER TO NEXT SHEET FOR PARTS DESCRIPTION LISTING

PARTS DESCRIPTION LISTING

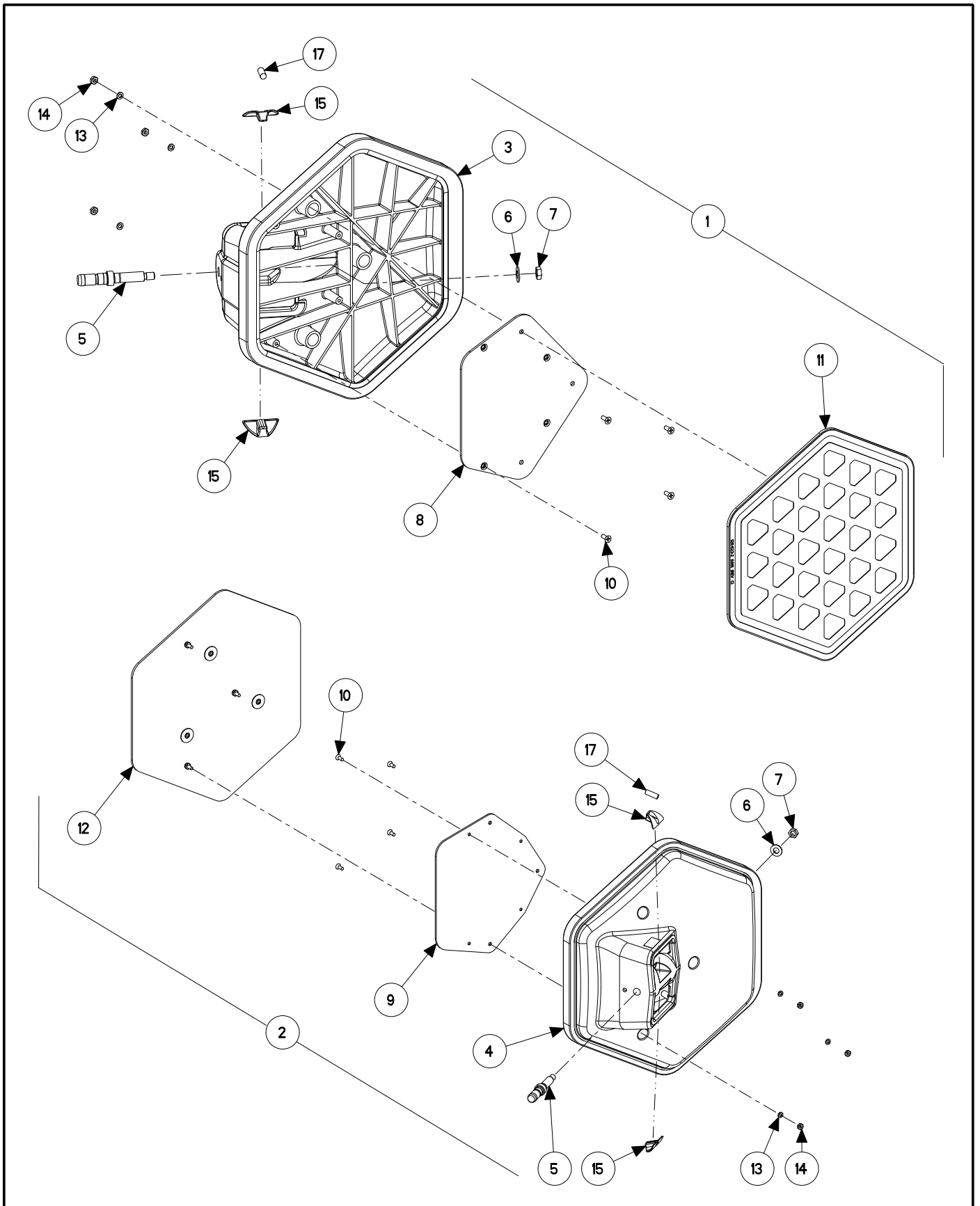
Index No.	Part Number	Description	Left Quantity	Right Quantity
1	125-412-1	SENSOR, HS200 RIGHT CAMERA ASSEMBLY (Consisting Of:)		1
OR	125-411-1	SENSOR, HS200 LEFT CAMERA ASSEMBLY (Consisting Of:) (Not Illustrated)	1	
2	109-136-1	TRANSDUCER, DSP600 FRONT IBIS	1	1
3	14-1127-1	BRACKET, 2 CAMERA SUPPORT RIGHT ASSEMBLY		1
OR	14-1126-1	BRACKET, 2 CAMERA SUPPORT LEFT ASSEMBLY (Not Illustrated)	1	
4	75-698-2	SCREW, SELF TAPPING 8-32 TRILOB	3	3
5	121-240-2	BLOCK CAMERA MOUNT HS200	1	1
6	75-41-2	HEX HEAD CAP SCREW 1/4 - 20 x .38 INCH, FULL-THREAD	3	3
7	75-500-2	SCREW, SELF TAPPING 6-32 x 3/8 INCH	4	4
8	49-76-2	GASKET, CAMERA BOARD	1	1
9	45-1193-1	PCA, HS400 CAMERA CONTROL	1	1
10	21-204-2	CONNECTOR .1 2 CIRCUIT JUMPER (Not Illustrated)	1	1
11	38-1067-1	CABLE, HS400 CAMERA CONTROL TO EMMITER POWER	1	1
12	24-54-2	NAMEPLATE, PATENT LABEL (Not Illustrated)	1	1
13	24-51-2	NAMEPLATE, HUNTER MODEL AND PART (Not Illustrated)	1	1
14	38-1068-1	CABLE, HS400 CAMERA CONTROL TO CAMERA CONTROL	REF.	1
15	38-1069-1	CABLE, HS400FC CAMERA CONTROL TO BURNDY (Not Illustrated)	1	
16	38-784-3	CABLE ASSEMBLY, SHIELDED SENSOR (See Sheet 4) (Not Illustrated)	REF.	
17	69-1061-2	COVER, CAMERA DSP600	1	1
18	69-1064-2	COVER, CAMERA CLEVIS DSP600	2	2
19	69-1063-1	COVER, ASSEMBLY BACK DSP600 (Consisting Of:)	1	1
20	69-1079-3	COVER, CAMERA BACK DSP600	1	1
21	69-1062-005	COVER, CAMERA PLATE	1	1
22	75-362-2	SCREW, SELF-TAPPING 6-32 X .25 INCH	4	4
23	20-2326-1	KIT, TWO CAMERA MANUAL LIFT HARDWARE (Consisting Of:) (Not Illustrated)	1	1
24	75-414-2	PAN HEAD MACHINE SCREW 8-32 X 3/4 INCH	4	4
25	75-441-2	SCREW, SELF-TAPPING 8-32 X .50 INCH	8	8
26	179-62-005	SHIELD, FRONT COVER DSP602	1	1
27	75-362-2	SCREW, SELF-TAPPING 6-32 X .25 INCH	4	4
28	16-889-1	TUBE ASSEMBLY, CAMERA SUPPORT CM (Consisting Of:)		1
29	16-888-1-005	TUBE ASSEMBLY, CAMERA SUPPORT CM		1
30	178-33-1-005	COUPLER, CAMERA DSP600 WELD		2
31	74-59-2	HEX HEAD CAP SCREW 3/8-16 X .75 INCH, FULL-THREAD		2
32	77-65-2	WASHER, FLAT 3/8 INCH, SPECIAL		2
33	75-23-2	HEX HEAD CAP SCREW 1/4-20 X .50 INCH FULL-THREAD		8
34	77-67-2	WASHER-FLAT 1/4 INCH		10
35	75-241-2	SOCKET SET SCREW 1/4-20 X 3/4 INCH, OVAL POINT		8
36	75-29-2	HEX HEAD CAP SCREW 1/4-20 X .75 INCH, FULL-THREAD		2



HIGH DEFINITION TARGETS
REFER TO NEXT SHEET FOR PARTS DESCRIPTION LISTING

PARTS DESCRIPTION LISTING

Index No.	Part Number	Description	Front Targets	Rear Targets
1	214-126-1	TARGET ASSEMBLY, RIGHT FRONT (Consisting Of:)	1	
OR	214-132-1	TARGET ASSEMBLY, RIGHT REAR (Consisting Of:) (Not Illus.)		1
OR	214-128-1	TARGET ASSEMBLY, LEFT FRONT (Consisting Of:) (Not Illus.)	1	
OR	214-131-1	TARGET ASSEMBLY, LEFT REAR (Consisting Of:) (Not Illus.)		1
2	105-507-3	HOUSING, TARGET OVERMOLD, FRONT	1	
OR	105-539-3	HOUSING, TARGET OVERMOLD REAR		1
3	97-550-2	SHAFT, BULLET TARGET	1	
OR	97-485-2	SHAFT, TARGET, DSP600		1
4	77-26-2	WASHER, FLAT 3/8 INCH	1	
OR	77-347-2	WASHER, FLAT 3/8 INCH		1
5	76-34-2	NUT, JAM 3/8-24	1	1
6	51-2215	PLATE, TARGET BACKUP	1	
OR	51-2297	PLATE, TARGET BACKUP		1
7	75-573-2	FLAT HEAD SHEET METAL SCREW 10-16 X .5 INCH	6	7
8	214-125-1	TARGET ASSEMBLY, FRONT	1	
OR	214-130-1	TARGET ASSEMBLY, REAR		1
9	77-276-2	WASHER, SPRING CURVED #10	3	3
10	76-263-2	NUT, LOCK 10-32 NYLON INSERT	3	3
11	51-2301	PLATE, UP INDICATOR	1	
OR	51-2302	PLATE, UP INDICATOR		1
12	46-591-2	SPACER, SHAFT	1	1
13	41-165	RETAINER, SHAFT	1	
OR	41-175	RETAINER, SHAFT		1
14	128-1142-2	DECAL, TURNPLATE SCALE POSITION	1	1



PRONTO III TARGETS
 REFER TO NEXT SHEET FOR PARTS DESCRIPTION LISTING

PARTS DESCRIPTION LISTING

Index No.	Part Number	Description	Front Targets	Rear Targets
1	214-115-1	TARGET ASSEMBLY, FRONT PLASTIC LH (Consisting Of:)	1	
OR	214-114-1	TARGET ASSEMBLY, FRONT PLASTIC RH (Not Illustrated)	1	
2	214-112-1	TARGET ASSEMBLY, REAR PLASTIC RH (Consisting Of:)		1
OR	214-113-1	TARGET ASSEMBLY, REAR PLASTIC LH (Not Illustrated)		1
3	214-168-1-R, 214-169-1-R	HOUSING, Rear w/bumper, HOUSING, Front w/bumper	1	
4	214-168-1-R, 214-169-1-R	HOUSING, Rear w/bumper, HOUSING, Front w/bumper		1
5	97-485-2	SHAFT, DSP600 TARGET	1	1
6	77-26-2	WASHER, FLAT 3/8 INCH	1	1
7	76-34-2	NUT, JAM 3/8-24	1	1
8	51-1714	PLATE, BACKUP FRONT	1	
9	51-1715	PLATE, BACKUP REAR		1
10	75-573-2	FLAT HEAD SHEET METAL SCREW 10-16 X .5 INCH	4	4
11	214-109-1	TARGET ASSEMBLY, FRONT 1.86	1	
12	214-104-1	TARGET ASSEMBLY, REAR 2.22		1
13	77-276-2	WASHER, SPRING CURVED #10	3	3
14	76-263-2	NUT, LOCK 10-32 NYLON INSERT	3	3
15	105-369-2	HOUSING, LEVEL TARGET	2	2
16	128-970-2	DECAL, DSP400 TARGET WARNING (Not Illustrated)	1	1
17	221-631-2	TOOL LEVEL, DSP400 TARGET	1	1

*KITS 214-168-1-R AND 214-169-1-R COME WITH PART NUMBERS: 221-631-2 X2, 105-369-2, 97-485-2, 77-26-2, AND 76-34-2.