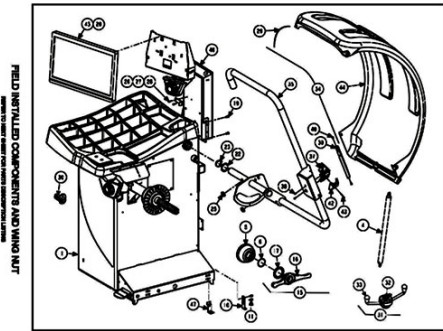
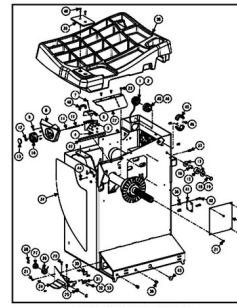


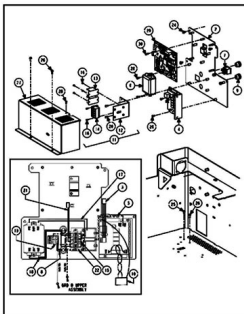
SMARTWEIGHT® PRO (SWP) (Domestic and Export)



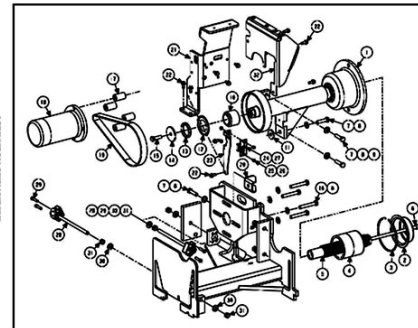
SHEET 3



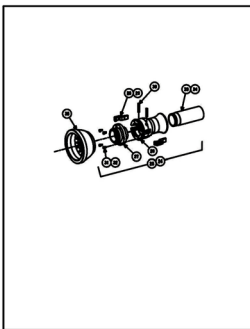
SHEET 4



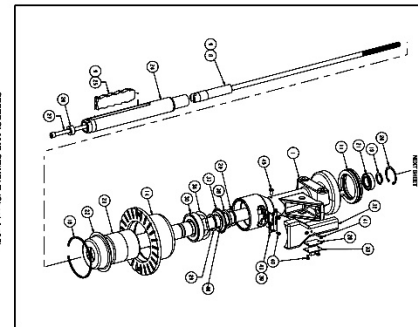
SHEET 5 AND 6



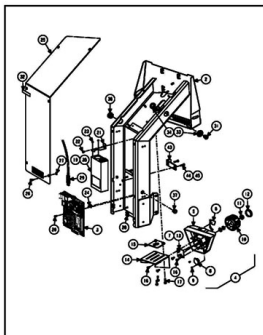
SHEET 7



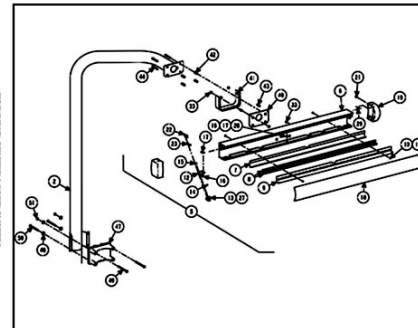
SHEET 8



SHEETS 9 AND 10



SHEET 11 and 12



SHEET 13

SMARTWEIGHT® PRO (SWP) (Domestic and Export)

REFER TO NEXT SHEET FOR PARTS DESCRIPTION LISTING

Sheet No.	Description (PDF navigation - click on image or description to go to sheet)
3	FIELD INSTALLED COMPONENTS AND WING NUT
4	TUB COMPONENTS AND FOOT PEDAL
5	ELECTRIC PANEL – WITHOUT POWER RELAY
6	ELECTRIC PANEL – WITH POWER RELAY
7	VIBRATION STRUCTURE
8	SPEEDCLAMP HUB
9 - 10	SPEEDCLAMP SPINDLE (TWO EXPLODED VIEWS)
11	DISPLAY SUPPORT
12	ORIGINAL DISPLAY SUPPORT
13	TOP DEAD CENTER LASER SYSTEM

ADDITIONAL PARTS DRAWING

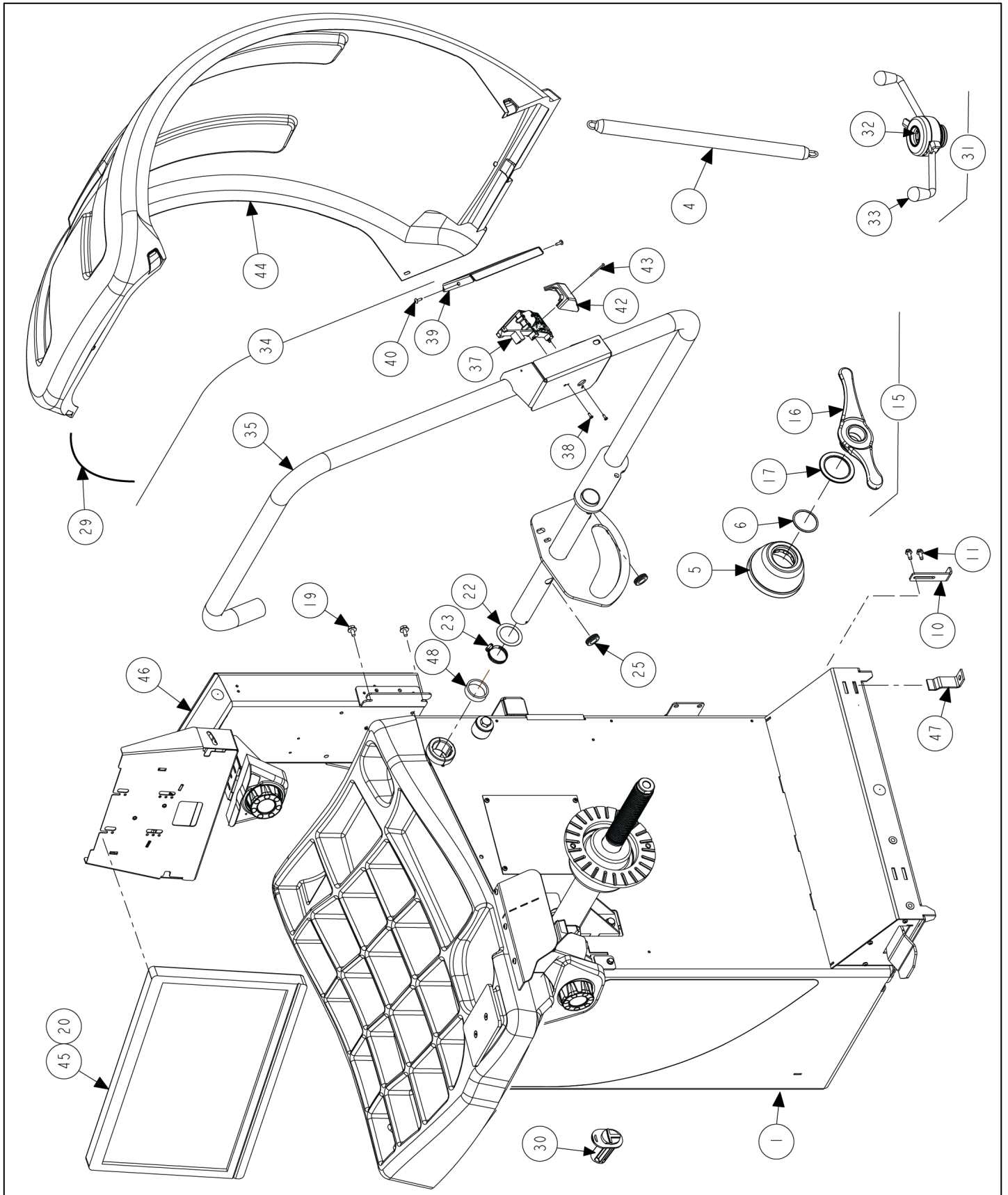
	Form Number	Description
1	Form 12-28	BALANCER WHEEL LIFT (KIT 20-3101-1)

CONES AND COLLET KITS (Not Illustrated) Basic Kits

	Part Number	Description	Qty.
1	20-3062-1	KIT, BASIC COLLET WITHOUT ACCESSORIES – TYP. DOMESTIC (Consists Of:)	1
OR	20-3169-1	KIT, PASSENGER COLLET WITHOUT ACCESSORIES – TYP. EXPORT (Consists Of:)	1
2	192-237-2	CONE, 2.01-2.30, 2.22-2.56 INCH	1
3	192-238-2	CONE, 2.47-2.80, 2.68-3.05 INCH	1
4	192-239-2	CONE, 2.99-3.28, 3.23-3.58 INCH	1
5	192-240-2	CONE, 3.58-4.05, 4.05-4.31 INCH	1
6	192-241-2	CONE, 4.27-4.70, 4.70-4.98 INCH (NOT in Export Kit 20-3169-1)	1

BullsEye® Kit

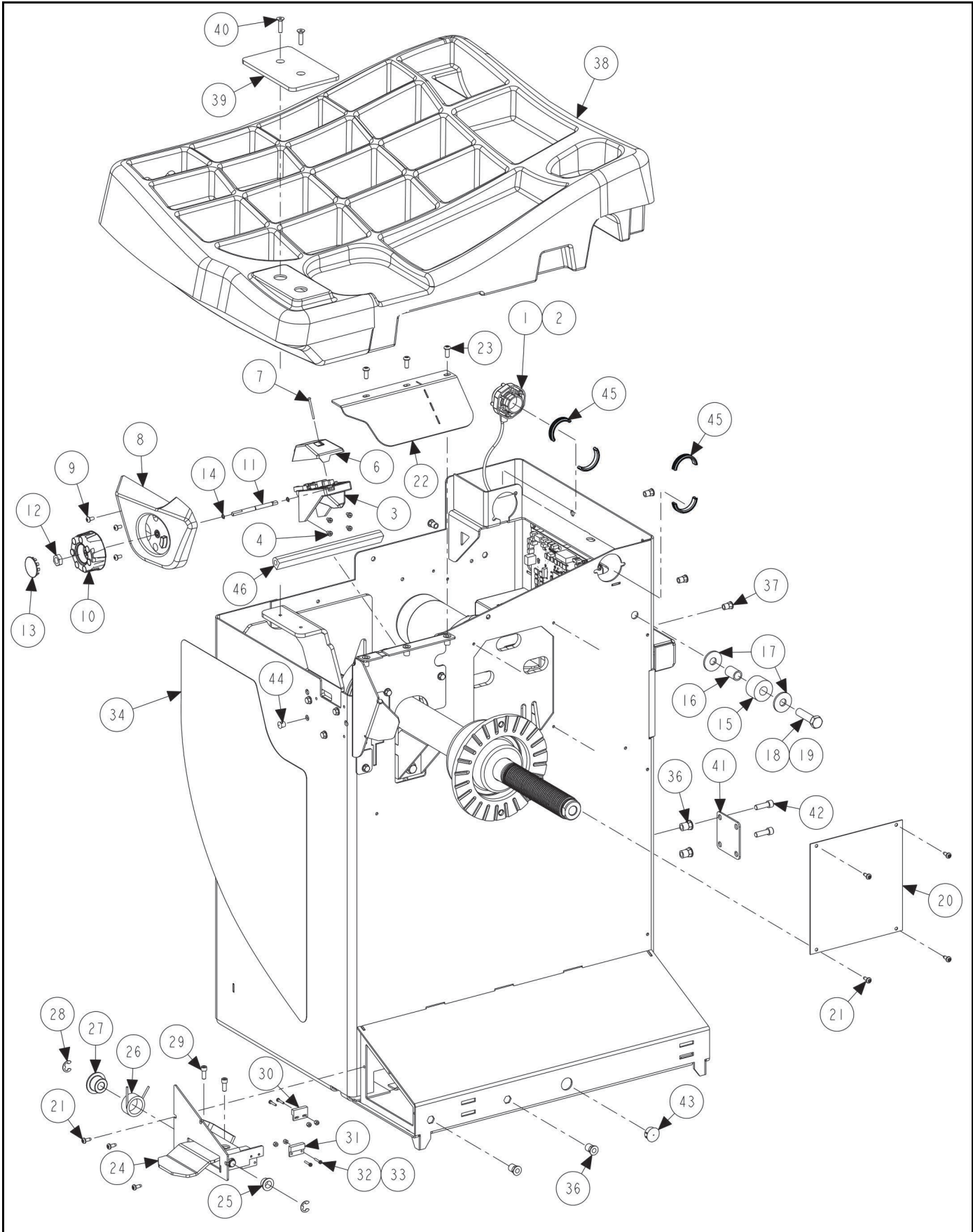
	Part Number	Description	Qty.
1	20-2747-1	KIT, 10 COLLET, GEN3 (BullsEye® Collet and Storage Kit) (Consists Of:)	1
2	20-2750-1	KIT, 10 COLLET CARRIER, GEN3 (Consists Of:)	1
3	56-78-1	CARRIER ASSEMBY, 10 COLLET, GEN3	1
4	14-1470-005	BRACKET, CONE SUPPORT	1
5	75-481-2	SOCKET BUTTON HEAD CAP SCREW 1/4-20 X .50 INCH	4
6	75-317-2	SCREW, THREAD ROLLING 1/4-20 X 5/8 INCH	4
7	20-2711-1	KIT, GEN 4-5 BALANCER CENTERING (Consists Of:)	1
8	20-2683-1	KIT, P-3/4TON DUAL TAPER COLLET (Consists Of:)	1
9	192-249-1	CONE, 2.01-2.27, 2.17-2.43 INCH (Grey with Black stripe)	1
10	192-250-1	CONE, 2.44-2.65, 2.58-2.79 INCH (Yellow with Black stripe)	1
11	192-251-1	CONE, 2.71-2.92, 2.89-3.11 INCH (Light Green with Black stripe)	1
12	192-252-1	CONE, 3.05-3.27, 3.21-3.42 INCH (Light Blue with Black stripe)	1
13	192-253-1	CONE, 3.37-3.58, 3.53-3.74 INCH (Red with Black stripe)	1
14	192-254-1	CONE, 3.65-3.86, 3.85-4.06 INCH (Orange with Black stripe)	1
15	192-255-1	CONE, 4.05-4.26, 4.17-4.36 INCH (Light Grey with Black stripe)	1
16	192-256-1	CONE, 4.32-4.54, 4.48-4.70 INCH (Purple with Black stripe)	1
17	192-257-1	CONE, 4.64-4.85, 4.80-5.01 INCH (Green with Black stripe)	1
18	192-258-1	CONE, 4.96-5.17, 5.12-5.33 INCH (Blue with Black stripe)	1
19	46-653-2	SPACER, 1.50 INCH WHEEL OFFSET MTG	1
20	175-392-1	ADAPTOR, BALANCER CUP WITH RETAINER 6 INCH	1
21	106-157-2	SLEEVE, CLAMPING 6 INCH CUP	1



FIELD INSTALLED COMPONENTS AND WING NUT

REFER TO NEXT SHEET FOR PARTS DESCRIPTION LISTING

Index No.	Part Number	Description	Qty.
1	72-664-1	BASE - BALANCER, SWP W/HOOD (See following Sheets)	1
2	20-3485-1	KIT, SW PRO BALANCER ACCESSORIES (Consists Of:)	1
3	65-72-2	WEIGHT, CALIBRATION (Not Illustrated)	1
4	98-303-2	SPRING, HOOD	1
5	175-353-1	ADAPTOR, BALANCER CUP WITH RETAINER (Includes)	1
6	41-138-2	RETAINER-ROUND WIRE, 2.00 DIAMETER	1
7	46-320-2	SPACER, SPINDLE SHAFT (Not Illustrated)	1
8	106-82-2	SLEEVE, CLAMPING CUP (Not Illustrated)	1
9	223-68-1	RING, BALANCER PRESSURE WITH RETAINER (Not Illustrated)	1
10	14-1346-005	BRACKET, BALANCER LEG LONG	1
11	75-317-2	SCREW, THREAD ROLLING 1/4-20 X 5/8 INCH	2
12	221-589-2	TOOL, WEIGHT HAMMER / PLIERS (Not Illustrated)	1
13	221-780-2	TOOL, NYLON HAMMER HEAD (Not Illustrated)	1
14	221-659-2	TOOL, ADHESIVE WEIGHT REMOVER (Not Illustrated)	1
15	76-432-1	NUT, FORGED WINGNUT WITH HANDLES (Consists Of:)	1
16	76-441-2	NUT, FORGED WITHOUT HANDLE HOLES	1
17	130-186 2	BEARING, MOLDED WINGNUT	1
18	75-35-2	ROUND HEAD MACHINE SCREW 10-32X.63 INCH	2
19	75-825-2	HEX WASHER HEAD MACHINE SCREW 1/4-20 X 5/8 INCH	4
20	75-668-2	PAN HEAD MACHINE SCREW M4X.7X10MM	4
21	94-11-2	TIE-CABLE (WHITE) (Not Illustrated)	2
22	169-167-2	SHIM, ENCODER RING (Proper installation not shown)	1
23	12-267-2	CLAMP, HOSE, 1.5 ID, 5/16 INCH WIDE (Proper installation not shown)	1
24	75-920-2	SELF-TAPPING 8-18 X 0.5 INCH DRILL POINT (Not Illustrated)	1
25	113-355-2	GROMMET, 7/8 HOLE X 5/8 INCH ID	2
29	94-45-2	TIE-CABLE (BLACK)	3
30	233-44-2	POST, CONE HOOK PLASTIC	6
31	76-574-2	NUT, QUICKNUT ERGONOMIC (Optional)	1
32	20-3417-2	KIT, REPAIR FOR QUICKNUT ERGO (Clamping Mechanism)	1
33	20-3519-2	KIT, KNOB REPAIR FOR QUICKNUT (Plastic Handles)	1
34	149-348-1	FRAME ASSEMBLY, HOOD, SWPRO	1
35	149-343-1-005	FRAME, HOOD, SWPRO	1
36	38-1313-1	CABLE ASSEMBLY, BAL OUTER CAMERA (Not Illustrated)	1
37	125-517-1	SENSOR-LASER,CAMERA OUTER	1
38	75-500-2	SCREW-STAP 6-32 X .38 INCH	2
39	69-1629-005	COVER, CAMERA HOUSING, SWP	1
40	75-828-2	TRUSS HEAD SHEET METAL SCREW #8 X .63 INCH DRILL POINT	2
41	113-369-2	GROMMET, FOR 3/4 HOLE X 5/16 INCH ID	2
42	69-1636-2	COVER, CAMERA, SFB	1
43	75-496-2	ROUND HEAD MACHINE SCREW 4-40 X 1.38 INCH	1
44	69-1613-2	COVER-HOOD, SMALL FORMAT BALANCER	1
45	227-106-2	DISPLAY, 22 CLASS LCD	1
46	11-1747-1	ASSEMBLY, DISPLAY SUPPORT, SWP	1
47	216-111-2	HOOK, FLOOR / SHIPPING HOLD DOWN	3
48	46-804-2	SPACER, HOOD TUBE	1

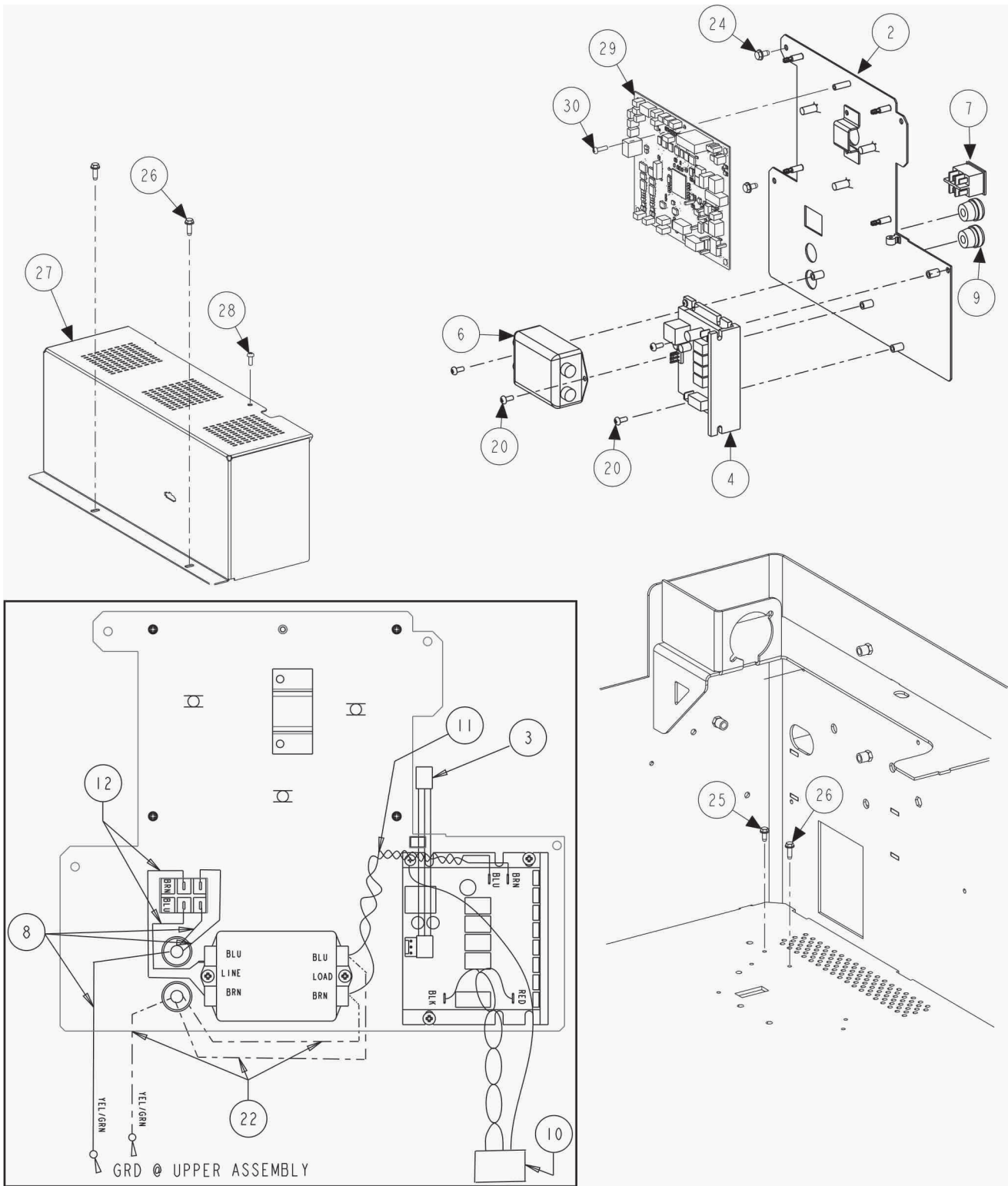


TUB COMPONENTS AND FOOT PEDAL

REFER TO NEXT SHEET FOR PARTS DESCRIPTION LISTING

Index No.	Part Number	Description	Qty.
1	125-518-1	SENSOR ASSEMBLY, HOOD ROTATION	1
2	75-920-2	SELF-TAPPING 8-18 X 0.5 INCH DRILL POINT	1
3	125-516-1	SENSOR, LASER,CAMERA INNER	1
4	75-327-2	SCREW, SELF-TAPPING 8-32 X 1/2 INCH	4
5	38-1312-1	CABLE ASSEMBLY, BALANCER INNER CAMERA	1
6	69-1636-2	COVER, CAMERA, SFB	1
7	75-496-2	ROUND HEAD MACHINE SCREW 4-40 X 1.38 INCH	1
8	105-726-2	BEZEL, TUB KNOB	1
9	75-934-2	PAN HEAD SHEET METAL SCREW #10 X 3/8 INCH	3
10	34-233-3	KNOB, DISPLAY-WITH OVERMOLD	1
11	97-691-2	SHAFT, LASER ROTATION	1
12	76-315-2	NUT, JAM 7/16-20	1
13	43-179-2	PLUG-HOLE, 1.25 INCH ID - STEEL	1
14	112-53-2	SNAP RING, 1/4 INCH EXTERNAL	2
15	228-25-2	STOP, 1.50 INCH O.D. RUBBER TUBE	1
16	113-174-2	BUSHING, STEEL .69 OD X .522 INCH ID	1
17	77-214-2	WASHER, FLAT 1/2 INCH SPECIAL	3
18	74-100-2	HEX HEAD CAP SCREW 1/2-13 X 2.00 INCH FULL-THREAD	1
19	76-333-2	NUT, LOCK 1/2-13 NYLON (Within Tub, Secures Stop)	1
20	69-1028-PPP	COVER, SPINDLE DRIVE MOTOR	1
21	75-936-2	PAN HEAD SHEET METAL SCREW 10 X 1/2 INCH	7
22	14-1742-005	COVER, CAMERA HOUSING-TOP	1
23	75-758-2	SOCKET BUTTON HEAD CAP SCREW 1/4-20 X .63 INCH	3
24	164-128-1	LEVER ASSEMBLY, FOOT PEDAL, SF (Consists Of:)	1
25	113-343-2	BUSHING, FLANGE, 1/2 X 5/8 X 3/8 INCH LONG	2
26	98-550-2	SPRING, TORSION	1
27	46-785-2	SPACER, FOOT PEDAL, SF	1
28	112-15-2	SNAP RING, #5133-50 OR EQUAL	2
29	75-604-3	SOCKET HEAD CAP SCREW 1/4-20 X .63 INCHCOATED	2
30	18-615-1	SWITCH ASSEMBLY, REED	1
31	60-24-2	MAGNET, REED SWITCH ACTUATOR	1
32	75-876-2	PAN HEAD MACHINE SCREW 4-40 X 5/8 INCH LONG	4
33	76-366-2	NUT, LOCK 4-40 NYLON INSERT	4
34	128-1747-2*	DECAL, SMARTWEIGHT PRO	1
35	128-2022-3	DECAL, SWP BAL (contains current decal for DAQ 45-1835-1) (Not Ill.)	1
or	128-1812-3	DECAL, SWP BAL (contains older DAQ decal 128-1811-2) (Not Illus.)	1
or	128-1782-3	DECAL, SWP BAL (contains older DAQ decal 128-1781-2) (Not Illus.)	1
36	76-413-2	NUT, HEX INSERT 5/16-18	4
37	76-414-2	NUT, HEX INSERT 1/4-20	6
38	69-1609-2	TRAY, WEIGHT SMALL FORMAT TRIM	1
39	51-3083-2	PLATE-ANVIL, SWPRO	1
40	75-226-2	FLAT HEAD SOCKET CAP SCREW 1/4-20 X 1.00 INCH	2
41	14-1730-005	BRACKET-MOUNT, HOOD SPRING	1
42	74-12-2	SOCKET HEAD CAP SCREW 5/16-18 X 1.00 FULL-THREAD	2
43	43-111-2	PLUG, 7/8 INCH DIAMETER HOLE	1
44	43-125-2	PLUG, HEYCO 2617 3/8 INCH BLACK	1
45	113-376-2	BUSHING, HOOD TUBE	4
46	141-110-2	EXTRUSION, 5/8 X 5/8 INCH FOAM	8.5 IN.

* Decal redesigned in early 2021. It is now slightly smaller than shown.



ELECTRIC PANEL – WITHOUT POWER RELAY

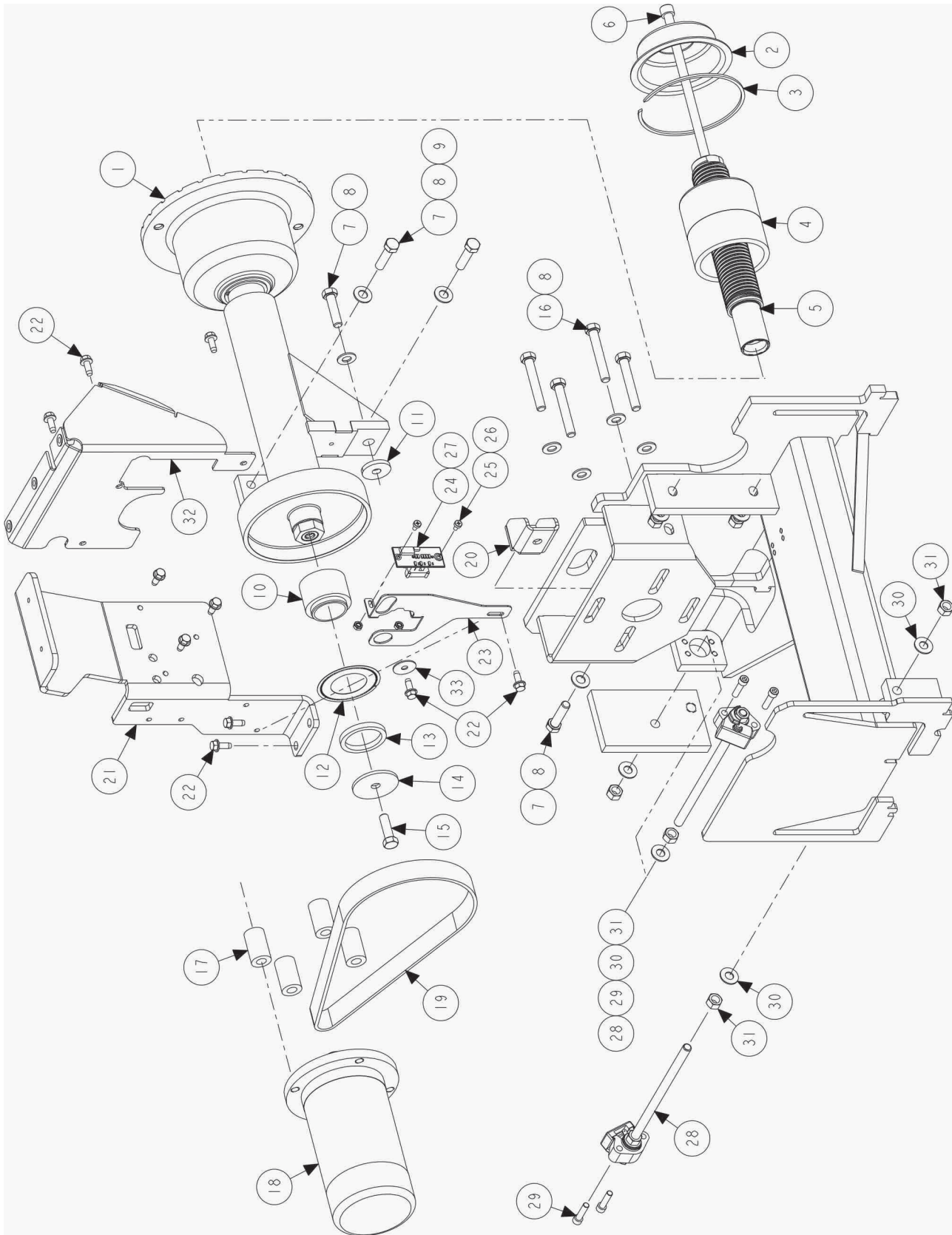
REFER TO NEXT SHEET FOR PARTS DESCRIPTION LISTING

Index No.	Part Number	Description	Qty.
1	232-386-1	ELECTRIC PANEL, WITHOUT POWER RELAY	1
2	51-3259-1	PLATE ASSEMBLY, ELECTRONICS, WITHOUT RELAY	1
3	37-820-1	WIRE ASSEMBLY, BAL SCR DRV V2 (for use with DAQ 45-1835-1)	1
or	37-717-1	WIRE ASSEMBLY, BAL SCR DRV (for use with DAQ 45-1597-1 or 45-1679-1)	1
4	232-323-2	8A SCR DC MOTOR DRIVE	1
6	136-93-2	FILTER - DSP9200	1
7	18-270-2	SWITCH, DOUBLE PULL SINGLE THROW ROCKER	1
8	38-845-3	CABLE ASSEMBLY, POWER GSP9700	1
9	59-62-2	STRAIN RELIEF-HEYCO #1244	2
10	37-628-1	WIRE ASSEMBLY, MOTOR	1
11	37-776-1	WIRE ASSEMBLY-SWP FILTER TO DRIVE	1
12	37-782-1	WIRE ASSEMBLY-SWP FILTER TO SWITCH	1
20	75-32-2	ROUND HEAD MACHINE SCREW 8-32 X .38 INCH	4
22	38-1145-2	POWER CORD, SPLIT IEC	1
24	75-802-2	SCREW, SELF-TAPPING 10-32 X 3/8 INCH	4
25	75-682-2	SCREW, SELF-TAPPING 8-32 X 3/8 INCH GREEN	1
26	75-327-2	SCREW, SELF-TAPPING 8-32 X 1/2 INCH	3
27	69-1652	COVER, ELECTRONICS, SWP	1
28	75-152-2	PAN HEAD MACHINE SCREW 8-32X.38 INCH	1
29	45-1835-1	PCA, BALANCER DAQ-LOW COST V3	1
or	45-1679-1	PCA, BALANCER DAQ-LOW COST V2 (replace with kit 20-3972-1*)	1
or	45-1597-1	PCA, BALANCER DAQ-LOW COST (replace with kit 20-3972-1*)	1
30	75-49-2	ROUND HEAD MACHINE SCREW 6-32 X 1/2 INCH	1
31	94-41-2	CLAMP, RELEASABLE, FIN BASE (Not Illustrated)	2
32	128-1811-2	DECAL-SWP BAL CONTROL (Applied to inside tub) (Not Illustrated)	1

* KIT 20-3972-1 - SWP DAQ BOARD REPLACEMENT contains current DAQ and necessary items for conversion.

Index No.	Part Number	Description	Qty.
1	232-354-1	ELECTRIC PANEL, SWP BALANCER	1
2	51-3144-1	PLATE ASSEMBLY, ELECTRONICS, SWP	1
3	37-820-1	WIRE ASSEMBLY, BAL SCR DRV V2 (for use with DAQ 45-1835-1)	1
or	37-717-1	WIRE ASSEMBLY, BAL SCR DRV (for use with DAQ 45-1597-1 or 45-1679-1)	1
4	232-323-2	8A SCR DC MOTOR DRIVE	1
5	37-735-1	WIRE ASSEMBLY, DC DRIVE POWER, SWP	1
6	136-93-2	FILTER - DSP9200	1
7	18-270-2	SWITCH, DOUBLE PULL SINGLE THROW ROCKER	1
8	38-845-3	CABLE ASSEMBLY, POWER GSP9700	1
9	59-62-2	STRAIN RELIEF-HEYCO #1244	2
10	37-628-1	WIRE ASSEMBLY, MOTOR	1
11	232-277-1	ELECTRIC ASSEMBLY, BALANCER RELAY (Only in 232)	1
12	14-1507-1	BRACKET ASSEMBLY, BALANCER RELAY	1
13	18-571-2	RELAY, BALANCER DC DRIVE	2
14	19-282-2	TERMINAL STRIP, 4 COND, 4 POLE	1
15	37-656-1	WIRE ASSEMBLY, BALANCER RELAY POWER SPLIT	1
16	75-171-2	ROUND HEAD MACHINE SCREW 4-40 X .31 INCH	1
17	37-633-1	WIRE ASSEMBLY, BALANCER RELAY TO DRIVE	6
18	37-657-1	WIRE ASSEMBLY, BALANCER TERMINAL TO FILTER	1
19	37-652-1	WIRE ASSEMBLY, GEN4 BALANCER POWER SWITCH	1
20	75-32-2	ROUND HEAD MACHINE SCREW 8-32 X .38 INCH	6
21	37-694-1	WIRE ASSEMBLY, GEN5 BALANCER RELAY POWER	1
22	38-1215-2	POWER CORD, SPLIT IEC	1
23	94-11-2	TIE-CABLE (WHITE) (Not Illustrated)	1
24	75-802-2	SCREW, SELF-TAPPING 10-32 X 3/8 INCH	4
25	75-682-2	SCREW, SELF-TAPPING 8-32 X 3/8 INCH GREEN	1
26	75-327-2	SCREW, SELF-TAPPING 8-32 X 1/2 INCH	3
27	69-1652	COVER, ELECTRONICS, SWP	1
28	75-152-2	PAN HEAD MACHINE SCREW 8-32X.38 INCH	1
29	45-1835-1	PCA, BALANCER DAQ-LOW COST V3	1
or	45-1679-1	PCA, BALANCER DAQ-LOW COST V2 (replace with kit 20-3972-1*)	1
or	45-1597-1	PCA, BALANCER DAQ-LOW COST (replace with kit 20-3972-1*)	1
30	75-49-2	ROUND HEAD MACHINE SCREW 6-32 X 1/2 INCH	1
31	94-41-2	CLAMP, RELEASABLE, FIN BASE (Not Illustrated)	2
32	128-1811-2	DECAL-SWP BAL CONTROL (Applied to inside tub) (Not Illustrated)	1

* KIT 20-3972-1 - SWP DAQ BOARD REPLACEMENT contains current DAQ and necessary items for conversion.

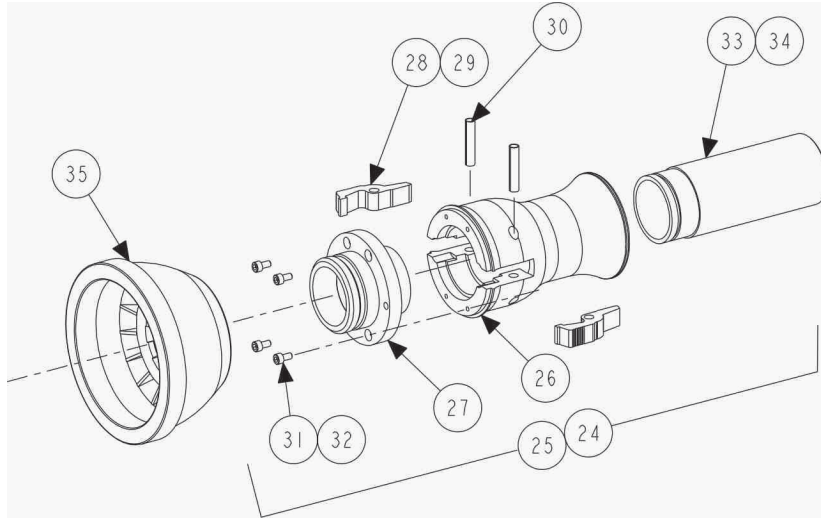


VIBRATION STRUCTURE

REFER TO NEXT SHEET FOR PARTS DESCRIPTION LISTING

Index No.	Part Number	Description	Qty.
1	105-740-1*	HOUSING ASSEMBLY, SWP SPINDLE, LONG (Includes items 2-6:)	1
2	41-221-2	RETAINER, SPRING COVER	1
3	112-112-2	SNAP RING, INTERNAL 115 mm	1
4	98-399-2	SPRING, HUB COMPRESSION	1
5	97-683-2	SHAFT-OUTER, SF BALANCER	1
6	74-633-2	SOCKET HEAD CAP SCREW 3/8-16 X 9.00 INCH	1
7	74-76-3*	HEX HEAD CAP SCREW 3/8-16 X 1.50 INCH GRADE 5	4
8	77-26-2*	WASHER, FLAT 3/8 INCH	10
9	76-26-2*	NUT, HEX 3/8-16	2
10	46-774-2*	SPACER, ENCODER, SF	1
11	46-795-005*	SPACER, SWP SPINDLE	1
12	17-80-2*	DISK, ENCODER RING DSP9200	1
13	98-417-2*	SPRING, WAVE, ENCODER	1
14	77-450-2*	WASHER, FLAT 3/8 X 2 X .125 INCH	1
15	74-622-3*	HEX HEAD CAP SCREW 3/8-16 X 1.25 INCH GRADE 8	1
16	74-375-2	HEX HEAD CAP SCREW 3/8-16 X 2.50 INCH GRADE 5	4
17	46-776-2	SPACER, MOTOR, SF BALANCER	4
18	129-273-2	MOTOR, DC WITH INTEGRAL PULLEY	1
19	126-51-2	BELT, POLY-V DRIVE 280J10	1
20	14-1715-1	BRACKET ASSEMBLY, BELT TENSION, SF	1
21	11-1775-005	SUPPORT, ANVIL	1
22	75-317-2*	SCREW, THREAD ROLLING 1/4-20 X 5/8 INCH	2
23	14-1805*	BRACKET, ENCODER, SWP, ADJUSTABLE	1
24	45-1159-1*	BALANCER SPINDLE ENCODER	1
25	75-152-2*	PAN HEAD MACHINE SCREW 8-32 X 5/16 INCH	2
26	76-71-2*	NUT, KEPS 8-32	2
27	38-837-1*	CABLE ASSEMBLY, SPINDLE ENC GSP BALANCER	1
28	109-182-1	TRANSDUCER ASSEMBLY, SINGLE PIEZO	2
29	75-239-2	SOCKET HEAD CAP SCREW 1/4-20 X 1.00 INCH FULL-THREAD	4
30	77-373-2	WASHER, FLAT 3/8 INCH GRADE 8	4
31	76-485-2	NUT, HEX 3/8-24 GRADE 8	4
32	14-1743-1	BRACKET ASSEMBLY, CAMERA - BASE	1
33	77-387-2*	WASHER-FENDER 9/32 INCH ID X 1 INCH OD	1

* Noted items are unique to standard clamps. See next sheet for Speed Clamp parts.

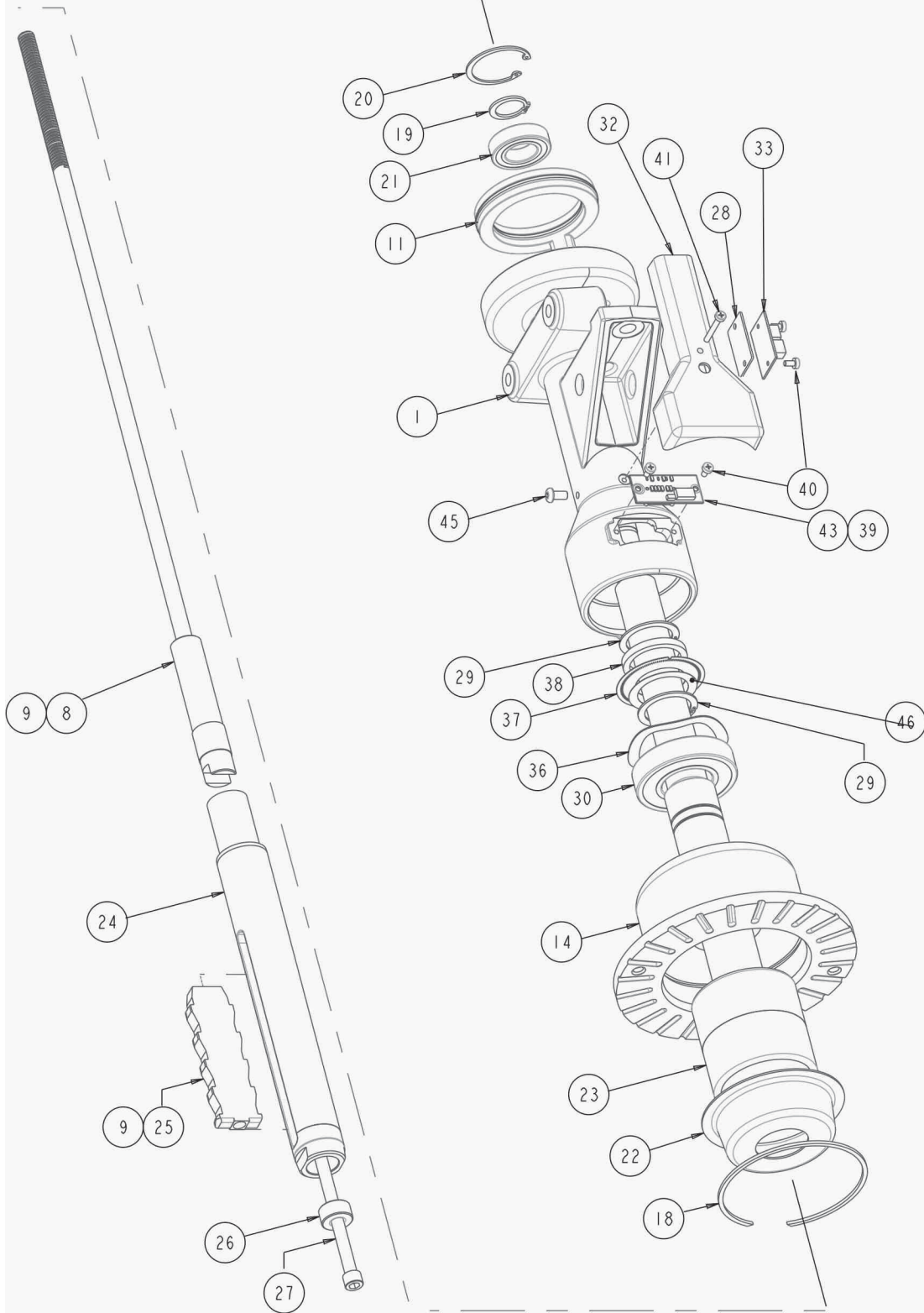


SPEEDCLAMP HUB

REFER TO NEXT SHEET FOR PARTS DESCRIPTION LISTING

Index No.	Part Number	Description	Qty.
24	20-3195-1	KIT, HUB ASSEMBLY, SPEEDCLAMP (Consisting Of:)	1
OR	20-3196-1	KIT, HUB ASSEMBLY, SPEEDCLAMP – EXPORT (Consisting Of:)	1
25	184-106-1	HUB ASSEMBLY, SPEEDCLAMP (Consists Of:)	1
26	184-105-2	HUB, SPEEDCLAMP CUP	1
27	217-61-2	COLLAR, AUTO-CLAMP CUP	1
28	144-105-2	LINK, PAWL AUTO-CLAMP	2
29	98-422-2	SPRING, TORSION AUTO-CLAMP	2
30	135-121-2	PIN, ROLL 1/4 INCH X 1 1/4 INCH	2
31	75-306-2	SOCKET HEAD CAP SCREW 8-32 X .31 INCH	4
32	Field purchase	LOCTITE # 271 OR PERMA BOND # HM128	A/R
33	106-156-2	SLEEVE, CLAMP (Export Only)	1
34	124-165-2	SEAL, O RING AS568A-030 (Export Only)	1
35	175-353-1	ADAPTOR, BALANCER CUP WITH RETAINER	REF

MORE ON
NEXT SHEET

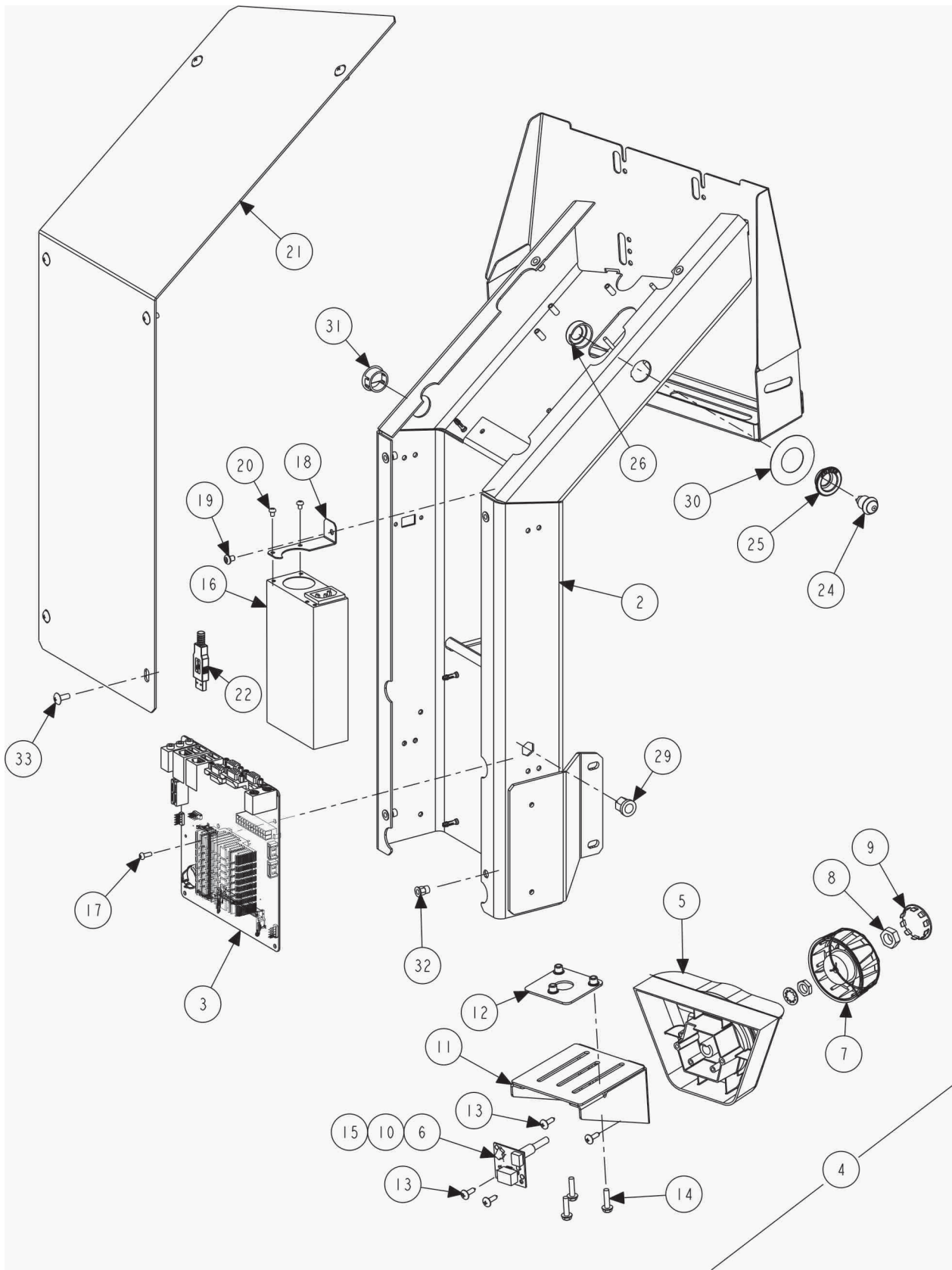


SPEEDCLAMP SPINDLE (Sheet 1 of 2)

REFER TO NEXT SHEET FOR PARTS DESCRIPTION LISTING

Index No.	Part Number	Description	Qty.
	105-788-1	HOUSING ASSEMBLY, SWP SPEED CLAMP (Consists Of:)	
1	105-786-2	HOUSING- SPINDLE- MACH- SWP SPEED CLAMP	1
2	76-606-2	NUT-SPLINED 2-START ACME 1/2-10	1
3	105-785-2	HOUSING-SPLINED NUT	1
4	217-89-2	COLLAR-NUT HOUSING - SWP	1
5	98-566-2	DISC SPRING – 34 MM OUTSIDE DIAMETER	16
6	112-187-2	RETAINING RING- INTERNAL- 34 MM	1
7	75-955-3	SOCKET HEAD CAP SCREW 10-24 X 4.0 INCH FULL-THREAD	4
8	97-721-1	SHAFT ASSEMBLY-INNER CLAMP, SWP	1
9	148-16-2	LUBRICANT, CAM	A/R
10	107-143-1	PULLEY ASSEMBLY, DRIVEN, SWP (Includes:)	1
10A	130-268-2	BEARING DOUBLE ROW 20 X 47 X 20.6 (Press Fit)	
11	50-123-1	SWP SPEEDCLAMP COIL ASSEMBLY	1
12	223-113-2	RING, CLUTCH PAD, SWP	2
13	223-112-2	RING, CLUTCH SWP	1
14	97-718-3	SHAFT ASSEMBLY, SPINDLE	1
15	184-117-1	HUB ASSEMBLY, CLUTCH, SWP	1
16	184-115-2	HUB, SLIDING	1
17	76-607-2	LOCKNUT-BEARING M20 X 1 MM	1
18	112-112-2	SNAP RING- INTERNAL 115 MM	1
19	112-130-2	SNAP RING-TRUARC 5160-98	1
20	112-179-2	SNAP RING-INTERNAL, 1-13/16	1
21	130-259-2	BEARING-6005	1
22	41-221-2	RETAINER-SPRING COVER	1
23	98-399-2	SPRING-HUB COMPRESSION	1
24	97-586-2	SHAFT - OUTER AUTOCLAMP	1
25	99-188-2	RATCHET-SWP SPEEDCLAMP	1
26	113-280-2	BUSHING - OUTER SHAFT	1
27	74-668-2	SOCKET HEAD CAP SCREW 3/8-16 X 6.5 INCH	1
28	45-1745-1	PCA-AUTO-CLAMP POWER	1
29	112-79-2	SNAP RING-EXTERNAL,1-9/16 INCH DIAMETER	2
30	130-137-2	BEARING-40 MM ID X 80 MM OUTSIDE DIAMETER	1
31	98-565-2	SPRING-WAVE 1 INCH SHAFT 1.25 INCH BORE	1
32	69-1708-2	COVER- ENCODER- SWP- SC	1
33	47-74-2	INSULATOR- SPEED CLAMP POWER BOARD	1
34	53-280-2	CAP- VINYL- 1.75 INCH INSIDE DIAMETER	1
35	75-956-3	SOCKET BUTTON HEAD CAP SCREW 6-32 X 5/16 INCH	15
36	98-567-2	SPRING- WAVE WASHER- 2.42 INCH INSIDE DIAMETER	1
37	17-80-2	DISK - ENCODER RING DSP9200	1
38	98-417-2	SPRING - WAVE, ENCODER	1
39	45-1159-1	BALANCER SPINDLE ENCODER	1
40	75-152-2	PAN HEAD MACHINE SCREW 8-32 X 5/16 INCH	4
41	75-957-2	PAN HEAD MACHINE SCREW - 8-32 X 1.25 INCH	1
42	77-473-2	WASHER- HEAVY- SWP SPEED CLAMP	2
43	38-837-1	CABLE ASSEMBLY-SPINDLE ENCLOSURE GSP BALANCER	1
44	28-108-2	KEY 1/4 X 1/2 INCH LONG	1
45	75-481-2	SOCKET BUTTON HEAD CAP SCREW 1/4-20 X .50 INCH	1
46	169-167-2	SHIM-ENCODER RING	1

Index No.	Part Number	Description	Qty.
	105-788-1	HOUSING ASSEMBLY, SWP SPEED CLAMP (Consists Of:)	
1	105-786-2	HOUSING- SPINDLE- MACH- SWP SPEED CLAMP	1
2	76-606-2	NUT-SPLINED 2-START ACME1/2-10	1
3	105-785-2	HOUSING-SPLINED NUT	1
4	217-89-2	COLLAR - NUT HOUSING - SWP	1
5	98-566-2	DISC SPRING – 34 MM OUTSIDE DIAMETER	16
6	112-187-2	RETAINING RING - INTERNAL- 34 MM	1
7	75-955-3	SOCKET HEAD CAP SCREW 10-24 X 4.0 INCH FULL-THREAD	4
8	97-721-1	SHAFT ASSEMBLY - INNER CLAMP, SWP	1
9	148-16-2	LUBRICANT, CAM	A/R
10	107-143-1	PULLEY ASSEMBLY, DRIVEN, SWP (Includes)	1
10A	130-268-2	BEARING DOUBLE ROW 20 X 47 X 20.6 (Press Fit)	
11	50-123-1	SWP SPEEDCLAMP COIL ASSEMBLY	1
12	223-113-2	RING, CLUTCH PAD, SWP	2
13	223-112-2	RING, CLUTCH SWP	1
14	97-718-3	SHAFT ASSEMBLY, SPINDLE	1
15	184-117-1	HUB ASSEMBLY, CLUTCH, SWP	1
16	184-115-2	HUB, SLIDING	1
17	76-607-2	LOCKNUT-BEARING M20 X 1 MM	1
18	112-112-2	SNAP RING- INTERNAL 115 MM	1
19	112-130-2	SNAP RING-TRUARC 5160-98	1
20	112-179-2	SNAP RING-INTERNAL, 1-13/16 INCH	1
21	130-259-2	BEARING-6005	1
22	41-221-2	RETAINER-SPRING COVER	1
23	98-399-2	SPRING-HUB COMPRESSION	1
24	97-586-2	SHAFT - OUTER AUTOCLAMP	1
25	99-188-2	RATCHET-SWP SPEEDCLAMP	1
26	113-280-2	BUSHING - OUTER SHAFT	1
27	74-668-2	SOCKET HEAD CAP SCREW 3/8-16 X 6.5 INCH	1
28	45-1745-1	PCA-AUTO-CLAMP POWER	1
29	112-79-2	SNAP RING-EXTERNAL,1-9/16 INCH DIAMETER	2
30	130-137-2	BEARING-40 MM ID X 80 MM OUTSIDE DIAMETER	1
31	98-565-2	SPRING-WAVE 1 INCH SHAFT 1.25 INCH BORE	1
32	69-1708-2	COVER- ENCODER- SWP- SPEED CLAMP	1
33	47-74-2	INSULATOR- SPEED CLAMP POWER BOARD	1
34	53-280-2	CAP- VINYL- 1.75 INCH INSIDE DIAMETER	1
35	75-956-3	SOCKET BUTTON HEAD CAP SCREW 6-32 X 5/16 INCH	15
36	98-567-2	SPRING- WAVE WASHER- 2.42 INCH INSIDE DIAMETER	1
37	17-80-2	DISK - ENCODER RING DSP9200	1
38	98-417-2	SPRING - WAVE, ENCODER	1
39	45-1159-1	BALANCER SPINDLE ENCODER	1
40	75-152-2	PAN HEAD MACHINE SCREW 8-32 X 5/16 INCH	4
41	75-957-2	PAN HEAD MACHINE SCREW - 8-32 X 1.25 INCH	1
42	77-473-2	WASHER- HEAVY- SWP SPEED CLAMP	2
43	38-837-1	CABLE ASSEMBLY-SPINDLE ENCLOSURE GSP BALANCER	1
44	28-108-2	KEY 1/4 X 1/2 INCH LONG	1
45	75-481-2	SOCKET BUTTON HEAD CAP SCREW 1/4-20 X .50 INCH	1
46	169-167-2	SHIM-ENCODER RING	1



DISPLAY SUPPORT

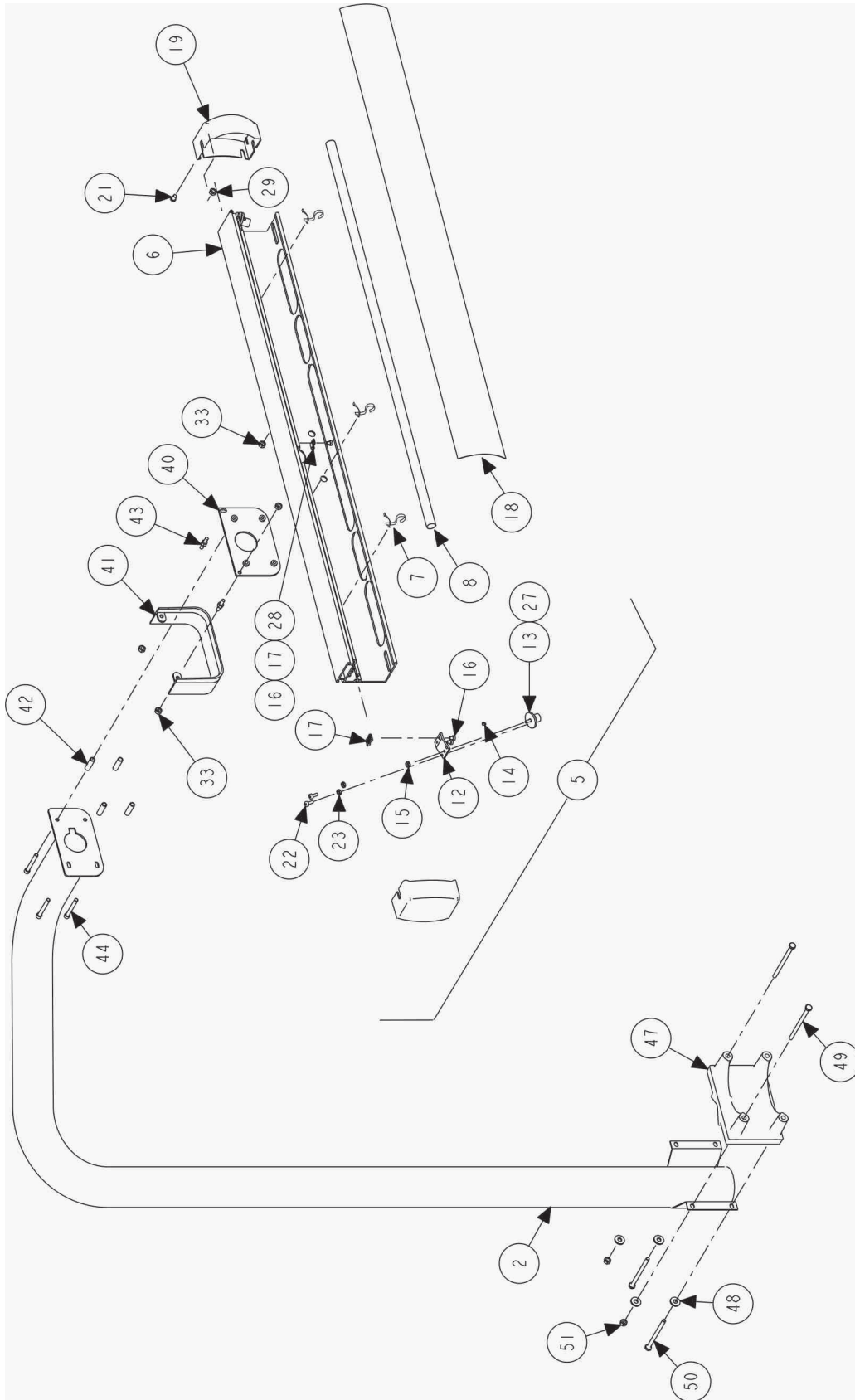
REFER TO NEXT SHEET FOR PARTS DESCRIPTION LISTING

Index No.	Part Number	Description	Qty.
1	11-1892-1*	ASSEMBLY-14 GA DISPLAY SUPPORT SWP	1
2	11-1893-1-005	SUPPORT ASSEMBLY-DISPLAY 14 GA	1
3	45-1657-2	PCB-RH4 MOTHERBOARD	1
4	146-73-1	CONTROLLER-MONITOR SELECT	1
5	105-791-2	BEZEL - MONITOR KNOB	1
6	45-1743-1-1	PCA-BALANCER USER INTERFACE G2	1
7	34-233-3	KNOB-DISPLAY-WITH OVERMOLD	1
8	76-315-2	NUT-JAM 7/16-20	1
9	43-179-2	PLUG-HOLE, 1.25 INCH ID - STEEL	1
10	38-1319-1	CABLE ASSEMBLY-LCB USER INTERFACE	1
11	14-1707-005	BRACKET - KNOB, ADJUSTABLE	1
12	51-3095-1	PLATE ASSEMBLY, NUT SFB MONITOR BRACKET	1
13	75-828-2	TRUSS HEAD SHEET METAL SCREW-#8 X .63 INCH DRILL POINT	4
14	75-912-2	HEX WASHER HEAD MACHINE SCREW 10-32 X .75 INCH FULL-THREAD	3
15	38-1325-1	CABLE-GROUND, UI ENCODER	1
16	232-373-2	FLEX ATX 150 WATT POWER SUPPLY	1
17	75-24-2	ROUND HEAD MACHINE SCREW 6-32 X .38 INCH	1
18	14-1307	BRACKET- FLEX ATX	1
19	75-582-2	SOCKET BUTTON HEAD CAP SCREW -10-32 X .25 INCH	1
20	75-332-2	ROUND HEAD MACHINE SCREW 6-32X.19 INCH	2
21	69-1723-005	COVER14 GA DISPLAY SUPPORT	1
22	38-963-2	CABLE-USB 2.0 A/B 1 METER	1
23	94-45-2	TIE-CABLE (BLK)	2
24	18-565-2	SWITCH ASSEMBLY-BAL MOTHER BOARD POWER	1
25	105-639-2	HOUSING-POWER BUTTON, OUTER	1
26	105-646-2	HOUSING - POWER BUTTON TC	1
27	37-819-1	WIRE ASSEMBLY-DAQ TO POWER, MICROFIT (for use with DAQ 45-1835-1)	1
or	37-704-1	WIRE ASSEMBLY-DAQ TO POWER, 4 PIN EXT (for use with DAQ 45-1597-1 or 45-1679-1)	1
28	DRIVES	PACKAGED FLASH DRIVES (Not Illustrated)	1
29	76-296-2	NUT-INSERT 3/8-16 HEX	1
30	128-1817-2	DECAL - BALANCER POWER OFF	1
31	43-111-2	PLUG-7/8 INCH DIAMETER HOLE	1
32	76-415-2	NUT-HEX INSERT 10-32	6
33	75-312-2	THRUSS HEAD MACHINE SCREW 10-32X1/2 INCH	6
34	75-825-2*	HEX WASHER HEAD MACHINE SCREW 1/4-20 X 5/8 INCH (Not Illustrated)	4
35	76-414-2*	NUT, HEX INSERT 1/4-20 (Not Illustrated)	4
36	227-106-2	DISPLAY, 22 INCH CLASS LCD (Not Illustrated)	1
37	75-668-2	PAN HEAD MACHINE SCREW M4 X .7 X 10 mm (Not Illustrated)	2

* Monitor support changed to this 14 gage design in 2021. Along with metal thickness change, the weight tray hook, and button in upper right-hand corner of selection controller were removed. Quarter-turn back cover closures were replaced with screws.

Index No.	Part Number	Description	Qty.
1	11-1747-1*	ASSEMBLY DISPLAY SUPPORT SWP (Consisting Of:)	1
2	11-1784-1-005	ASSEMBLY, DISPLAY SUPPORT, BALANCER	1
3	45-1657-2	PCB, RH4 MOTHERBOARD	1
OR	45-1545-2	PCB, J1900 Mini-ITX MOTHERBOARD	1
4	146-63-1	CONTROLLER, MONITOR SELECTION	1
5	105-708-2	HOUSING, DISPLAY KNOB	1
6	18-611-2	SWITCH, OVERLAY, MONITOR - SFB	1
7	45-1639-1	PCA, BALANCER USER INTERFACE	1
8	70-161-1	HARNESS, BEEPER, SWP	1
9	75-712-2	SCREW, SELF-TAPPING #4 X .19 INCH	2
10	34-233-3	KNOB, DISPLAY-WITH OVERMOLD	1
11	76-315-2	NUT, JAM 7/16-20	1
12	43-179-2	PLUG, HOLE, 1.25 INCH INSIDE DIAMETER - STEEL	1
13	38-1319-1	CABLE ASSEMBLY, LCB USER INTERFACE	1
14	14-1707-005	BRACKET-KNOB, ADJUST	1
15	51-3095-1	PLATE ASSEMBLY, NUT SFB MONITOR BRACKET	1
16	75-828-2	TRUSS HEAD SHEET METAL SCREW-#8 X .63 INCH DRILL POINT	4
17	75-912-2	HEX WASHER HEAD MACHINE SCREW 10-32 X .75 INCH FULL-THREAD	3
18	38-1325-1	CABLE, GROUND, UI ENCODER (Not Illustrated)	1
19	232-253-2	FLEX ATX 150W POWER SUPPLY	1
20	75-24-2	ROUND HEAD MACHINE SCREW 6-32 X .38 INCH	1
21	14-1307	BRACKET, FLEX ATX	1
22	75-582-2	SOCKET BUTTON HEAD CAP SCREW -10-32 X .25 INCH	1
23	75-332-2	ROUND HEAD MACHINE SCREW 6-32 X .19 INCH	2
24	46-790-2	STANDOFF, 0.437 INCH HIGH, NYLON	1
25	69-1372-005	COVER, DISPLAY SUPPORT, TOUCH	1
26	75-775-2	SCREW, QUARTER TURN, SIZE 280	6
27	76-490-2	NUT, QUARTER TURN, CLIP-ON	6
28	41-205-2	RETAINER, QUARTER TURN, 82 SERIES	6
29	38-963-2	CABLE, USB 2.0 A/B 1 METER	1
30	94-45-2	TIE-CABLE (BLACK) (Not Illustrated)	2
31	18-565-2	SWITCH ASSEMBLY, BALANCER MOTHER BOARD POWER	1
32	128-1399-2	DECAL, DISPLAY COVER GEN IV	1
33	105-639-2	HOUSING, POWER BUTTON, OUTER	1
34	105-640-2	HOUSING, POWER BUTTON, INNER	1
A	128-1817-2	DECAL - BALANCER POWER OFF	1
35	37-819-1	WIRE ASSEMBLY, DAQ TO POWER, MICROFIT (for use with DAQ 45-1835-1)	1
or	37-704-1	WIRE ASSEMBLY, DAQ TO POWER, 4 PIN EXT (for use with DAQ 45-1597-1 or 45-1679-1)	1
36	DRIVES	PROGRAM AND DATA FLASH DRIVES (Not Illustrated)	1
37	76-296-2	NUT, INSERT 3/8-16 HEX	1
38	43-111-2	PLUG, 7/8 INCH DIAMETER HOLE	1
39	75-414-2	PAN HEAD MACHINE SCREW 8-32 X .75 INCH	1
40	76-71-2	NUT - KEPS 8-32	1
41	12-145-2	CLAMP - CABLE 1/4 INCH DIAMETER	1
42	75-825-2*	HEX WASHER HEAD MACHINE SCREW 1/4-20 X 5/8 INCH	4
43	76-414-2*	NUT, HEX INSERT 1/4-20 (Not Illustrated)	4
44	227-106-2	DISPLAY, 22 INCH CLASS LCD (Not Illustrated)	1
45	75-668-2	PAN HEAD MACHINE SCREW M4 X .7 X 10 mm (Not Illustrated)	2

* Monitor support changed to a 14 gage design in 2021. (See previous sheet.) The most noticeable change was the replacement of the quarter-turn back cover closures with screws.



TOP DEAD CENTER LASER SYSTEM

REFER TO NEXT SHEET FOR PARTS DESCRIPTION LISTING

Index No.	Part Number	Description	Qty.
1	20-3765-1	KIT - TDC LASER, SINGLE BRKT LED	1
2	16-912-1-005	TUBE ASSEMBLY, TDC LASER SUPPORT	1
5	105-787-1	HOUSING, TDC LASER HEADER ASSEMBLY LED G2 (Consists Of:)	1
6	105-514-2	HOUSING, TDC LASER HEADER	1
7	35-212-2*	LAMP, LED, 12 VOLT, 36 INCH	1
8	117-230-2*	HANGER, LED STRIP	3
12	14-1130-2	BRACKET, TDC LASER MOUNT	2
13	105-530-1	HOUSING, TDC LASER ASSEMBLY	2
14	98-427-2	SPRING, TDC LASER ADJUSTMENT	2
15	76-61-2	NUT, KEPS 10-32	2
16	75-608-2	PAN HEAD MACHINE SCREW 10-32 X .31 INCH	5
17	76-382-2	NUT-T	5
18	190-192-2	SIGN, TDC LASER SYSTEM	1
19	69-1204-2	COVER, TDC LASER END CAP	2
20	Field Purchase	ADHESIVE, LOCTITE 242	A/R
21	75-535-2	LOW HEAD SOCKET CAP SCREW 1/4-20 X .38 INCH	2
22	75-161-2	PAN HEAD MACHINE SCREW 10-32 X .50 INCH	4
23	76-11-2	NUT, HEX 10-32	4
24	128-1155-2	DECAL, LASER COMPLIANCE 2M	1
25	128-1308-2	DECAL, RX CABLE WRAP, RIGHT (Not Illustrated)	1
26	128-1309-2	DECAL, RX CABLE WRAP, LEFT (Not Illustrated)	1
27	77-35-2	WASHER, FLAT 5/8 INCH	2
28	12-158-2	CLAMP, CABLE NYLON .312 INCH DIAMETER	5
29	76-13-2	NUT, HEX 1/4-20	4
33	76-13-2	NUT, HEX 1/4-20	6
35	38-1206-2	CABLE, PC POWER SUPPLY ADAPTOR (Not Illustrated)	1
36	77-45-2	WASHER-FLAT 3/16 (Not Illustrated)	2
37	76-159-2	NUT, KEPS 3/8 - 16 (Not Illustrated)	4
40	51-2332-1-005	PLATE, TDC HAMMERHEAD MOUNT ASSEMBLY	1
41	69-1271-2	COVER, TDC ADJUSTMENT	1
42	98-443-2	SPRING, TDC LASER ADJUSTMENT	4
43	134-141-2	STUD, 1/4-20 DOUBLE ENDED, BRASS	2
44	75-877-3	SOCKET HEAD CAP SCREW 1/4-20 X 2.00 INCH NYLON	4
45	75-535-2	LOW HEAD SOCKET CAP SCREW 1/4-20 X .38 INCH (Not Illustrated)	2
46	37-693-1	WIRE ASM, GEN3 LED HAMMERHEAD (not in kit) (for retro GEN 3) (Not Illus.)	1
47	14-1737-2	BRACKET, TDC LASER ONE PIECE	1
48	77-67-2	WASHER, FLAT 1/4 INCH	4
49	75-917-2	HEX HEAD CAP SCREW 1/4-20 X 3.5 INCH (GRADE 8)	2
50	75-918-2	HEX HEAD CAP SCREW 1/4-20 X 3.5 INCH (GRADE 8)	2
51	76-367-2	NUT, FLANGE 1/4 - 20	2
52	46-805-2	SPACER, 1/4 IN, SLOTTED (Correction to meet TDC) (Not Illustrated)	2

* Use retrofit kit 20-3766-1 to replace obsoleted LED lamp with current light strip.