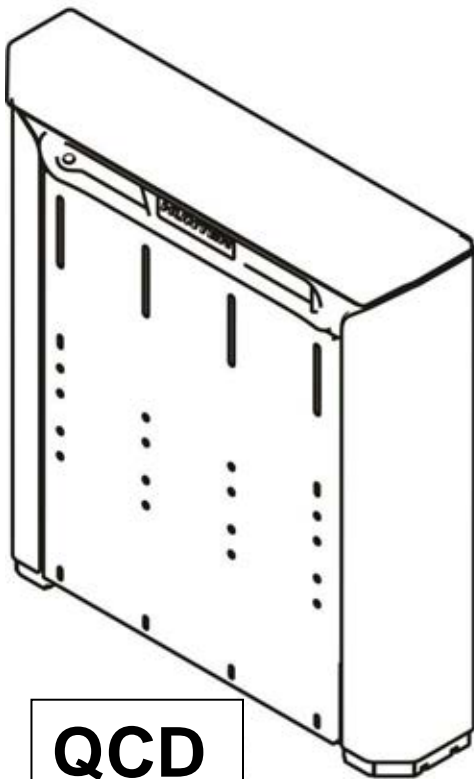
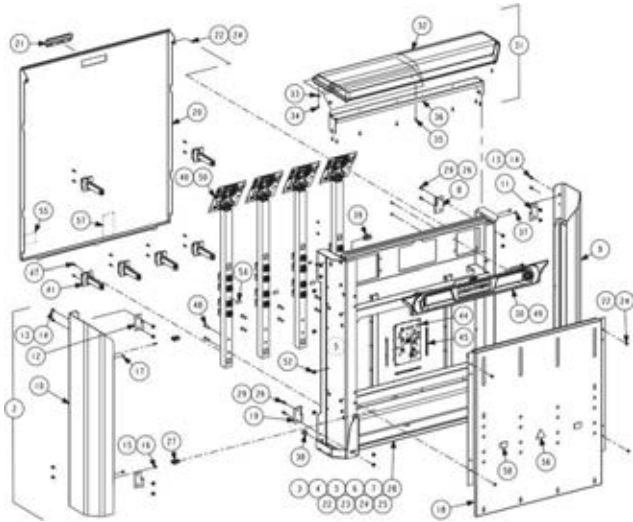


QCHD

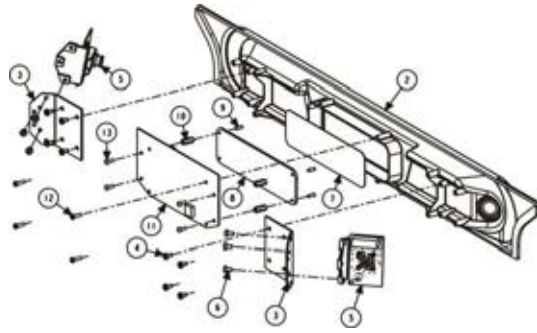


QCD

Quick Check Drive® (QCD) and Quick Check Heavy Duty (QCHD)



SHEET 3

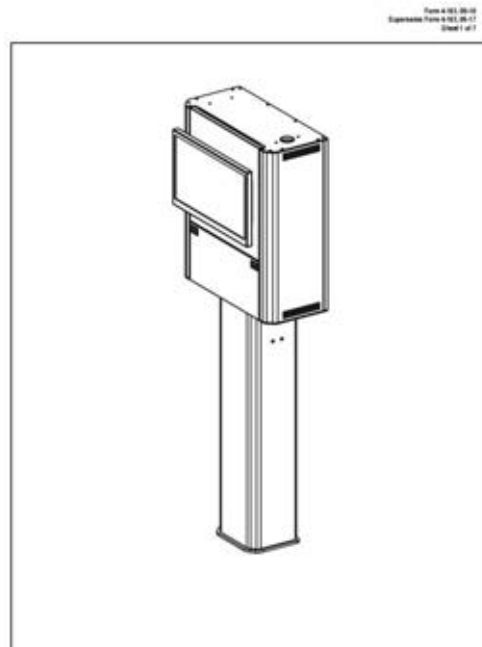


SHEET 4



COMPACT CABINETS (WA, WT, WQ AND WU / SERIES 370, 470, 570 AND 670)
© 2014 - 2018 Hunter Engineering Company

Form 4-174



WQ592 and WU592 PARTS DRAWING
© 2017-2018 Hunter Engineering Company

Form 4-183

Quick Check Drive® (QCD and QCHD)

REFER TO NEXT SHEET FOR PARTS DESCRIPTION LISTING

PARTS DESCRIPTION LISTING

Sheet No.	Description
3	SENSOR ASSEMBLY
4	BODY CAMERA ASSEMBLY
5	QCHD RISER

References

Description	Reference
Compact Cabinets (WA, WT, WQ AND WQ / Series 370, 470, 570 and 670)	Form 4-174
WQ592 and WU592 Vehicle Inspection Console	Form 4-183

Installation Hardware Kit

Not Illustrated – Refer to Installation Instructions 7454-T for individual component function.

Index No.	Part Number	Description	Qty.
1	20-3594-1	KIT, HARDWARE QCD (Consists Of:	1
2	74-169-2	BOLT, ANCHOR 1/2 X 3 3/4 INCH	4
3	38-1243-2	CABLE, 75 FEET CAT 6	2
4	64-192	PAD, QCD LEVELING	4
5	12-163-2	CLAMP, P CLIP 3/8 INCH ID RUBBER	2
6	75-312-2	TRUSS HEAD MACHINE SCREW 10-32 X 1/2 INCH	2
7	94-38-2	TIE CABLE BLACK	10
8	74-70-2	HEX HEAD CAP SCREW 3/8-16 X 1.50 INCH FULL-THREAD	8
9	76-15-2	NUT, JAM 3/8-16	8

Pre-release version of QCD had different covers and support frame. Refer to 08-18 version of 9-24.



PARTS DESCRIPTION LISTING

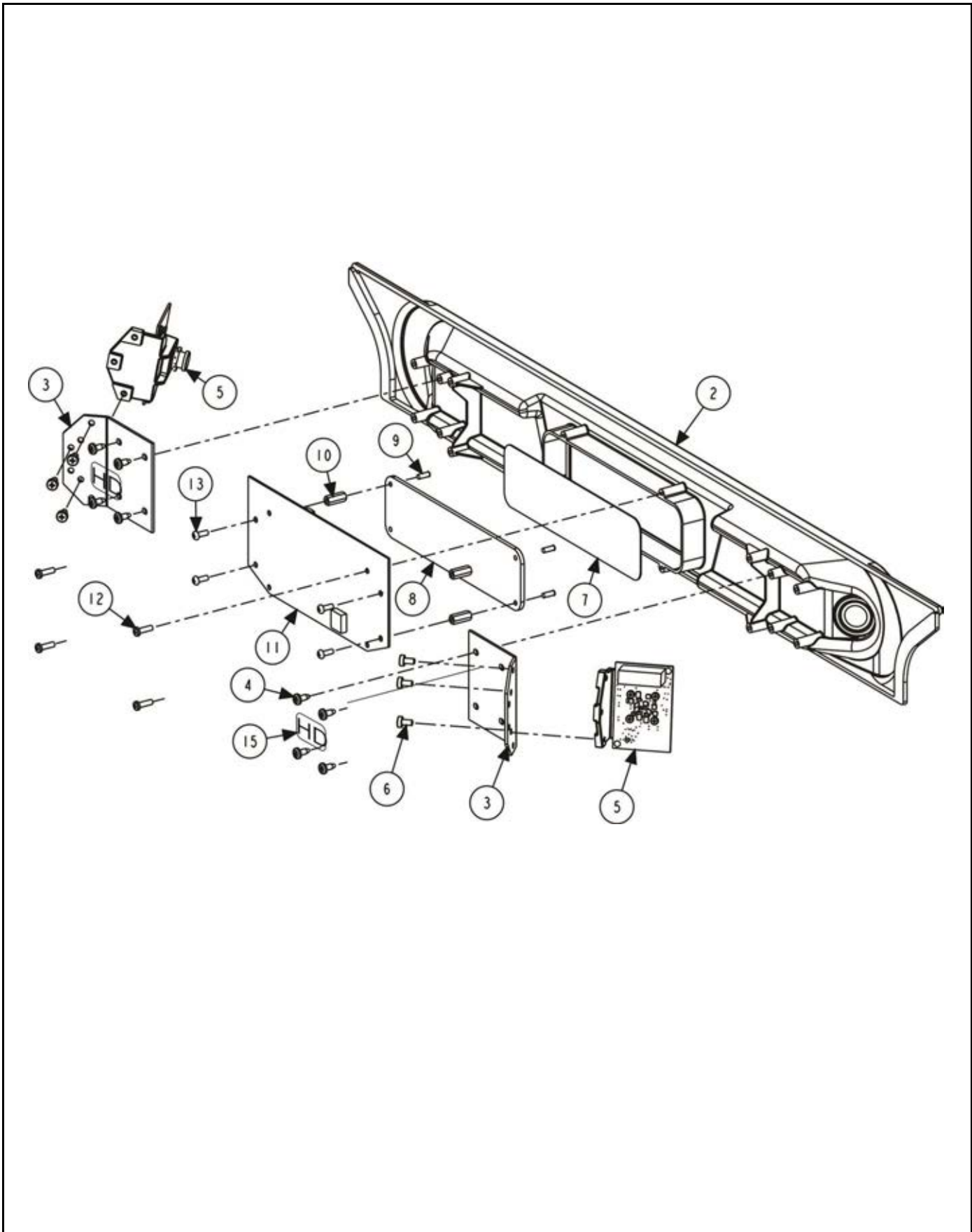
Index No.	Part Number	Description	Qty.
1	125-521-1	SENSOR ASSEMBLY, QCD SINGLE (Consists Of:)	2
OR	125-528-1	SENSOR ASSEMBLY, QCD HD (Heavy Duty) SINGLE (Consists Of:)	2
2	30-571-1	CABINET ASSEMBLY, QCD	1
3*	72-670-1-005	BASE ASSEMBLY, SENSOR QCD	1
4*	11-1780-005	SUPPORT, QCD CABINET RIGHT	1
5*	11-1781-005	SUPPORT, QCD CABINET LEFT (Side identified with callout)	1
6*	116-312-005	STIFFENER, CROSS BRACE (horizontal bracing)	2
7*	14-1765-005	BRACKET, QCD BODY DAMAGE CAMERA	1
8	160-69-2	HINGE, LIFT OFF LEFT MALE	2
9	53-255-1-001	CAP ASSEMBLY, SIDE QCD RIGHT (Contains:)	1
10	53-256-1-001	CAP ASSEMBLY, LEFT SIDE QCD (Contains:)	1
11	160-78-2	HINGE ASSEMBLY, LIFT OFF RIGHT (only for 53-255-1-PPP)	2
12	160-77-2	HINGE ASSEMBLY, LIFT OFF LEFT (only for 53-256-1-PPP)	2
14	75-765-2	SOCKET BUTTON HEAD CAP SCREW 1/4-20 X 3/8 INCH	4
15	76-443-2	NUT, HEX INSERT 8-32	2
16	135-144-2	PIN, STRIKER	2
17	228-90-2	STOP, DOOR BUMPER	2
18	173-115-1	SCREEN ASSEMBLY, PANEL FRONT COVER	1
19	160-71-2	HINGE, LIFT OFF RIGHT MALE	2
20	171-350-005	PANEL, QCD REAR (shown)	1
or	171-346-005	PANEL, QCD REAR (older version with tabs along bottom – not shown)	1
21	142-93-2	HANDLE, PLASTIC POCKET PULL	1
22*	76-415-2	NUT, HEX INSERT 10-32	11
23*	76-414-2	NUT, HEX INSERT 1/4-20	16
24*	75-312-2	TRUSS HEAD MACHINE SCREW 10-32 X 1/2 INCH	10
25*	75-120-2	HEX HEAD CAP SCREW 1/4-20 X .63 INCH GRADE 8	16
26	76-85-2	NUT, KEPS 1/4-20	8
27	144-181-2	LATCH, PIN CATCH 10GA	4
28*	54-1125-005	CHANNEL, WIER GUIDE QCD (vertical channels)	2
29	75-758-2	SOCKET BUTTON HEAD CAP SCREW 1/4-20 X .63 INCH	8
*	76-487-2	NUT-HEX INSERT 10-32 .225 GRIP	4
*	48-104-2	RIVET-BLIND 5/32X3/16 AL BLACK	2
*	74-203-2	HHCS 5/16-18X.63 GR5 FTHD ZP	4
*	77-20-2	WASHER-FLAT 5/16 TPA-N ZP	4
30	105-715-1	HOUSING ASM-BC MOUNT (Refer to Sheet 4)	1
OR	105-792-1	HOUSING ASM-BC MOUNT QCD-HD (Refer to Sheet 4)	1
31	69-1658-1	COVER ASSEMBLY, QCD	1
32	69-1607-2	COVER - NON CONTACT QC	1
33	64-189-2	PAD-BUMPER	4
34	75-49-2	RHMS 6-32X1/2 PR ZP	4
35	75-913-2	SCREW-SELF-TAPPING #8 X .63 INCH	8
36	54-1126-1	CHANNEL ASSEMBLY, TOP COVER QCD	1
37	75-312-2	TRUSS HEAD MACHINE SCREW 10-32 X 1/2 INCH (secures top cover)	2
38	113-279-2	BUSHING, 0.75 HOLE	2
39	21-729-2	CONNECTOR-NETWORK RJ45 CAT 5	1
40a	20-3612-1	QCD, SINGLE STICK (single, complete sensor assembly) (Contains:)	4
40b	106-202-1	SLEEVE ASSEMBLY, LASER	4
41	125-507-1	SENSOR ASM-PHOTO QCD	6
42	37-713-1	WIRE ASSEMBLY, QCD POWER (Not Illustrated)	5
43	38-1347-2	CABLE, ETHERNET QCD (Not Illustrated)	5
44	45-1575-1	PCA, 5 PORT GIGE SWTCH W/POE PD	1
45	104-48-2	GUIDE, PC BD	3
46	37-714-1	WIRE ASSEMBLY, QCD SYNC (Not Illustrated)	3
47	75-911-2	PAN HEAD MACHINE SCREW 8-32 X 1/2 INCH	12
48	74-12-2	SOCKET HEAD CAP SCREW 5/16-18 X 1.00 INCH FULL-THREAD	8
49	75-916-2	SCREW, SELF-TAPPING 8 X .50 INCH (secures body damage camera)	4
50	21-204-2	CONNECTOR .1 2 CIRCUIT JUMPER	14
51	94-38-2	TIE CABLE BLACK (Not Illustrated)	6
52	94-23-2	TIE, HOLDER SNAP IN	5
53	94-13-2	TIE-CABLE (Not Illustrated)	2
54	128-1566-2	LABEL, LASER APERTURE	4
55	24-190-2	NAMEPLATE, HUNTER.COM/PATENTS	1
56	128-1565-2	LABEL, LASER HAZARD	1
57	128-1786-2-08	DECAL, LASER EXPLANATORY QCD	1
58	128-1787-2	LABEL, LASER APERTURE W/ARROWS	2

* QCD frame components and assembling hardware are not anticipated to be typical replacement parts and therefore are not exploded.



11250 HUNTER DRIVE BRIDGETON, MO 63044

PPP-Paint Code Required
A/R-As Required
REF-Reference



BODY CAMERA ASSEMBLY

REFER TO NEXT SHEET FOR PARTS DESCRIPTION LISTING

PARTS DESCRIPTION LISTING

Index No.	Part Number	Description	Qty.
1	105-715-1	HOUSING ASSEMBLY, BC MOUNT (QCD) (Consists Of:)	1
OR	105-792-1	HOUSING ASM-BC MOUNT QCD-HD (Consists Of:)	1
2	105-703-2	HOUSING, BODY DAMAGE CAMERAS	1
3	14-1709	BRACKET, BODY DAMAGE CAMERA	2
4	75-629-2	SCREW, SELF-TAPPING 8 X .38 INCH	8
5	109-176-1	TRANSDUCER, BODY DAMAGE CAMERA	2
6	75-152-2	PAN HEAD MACHINE SCREW 8-32 X 5/16 INCH	6
7	24-168-2	NAMEPLATE, CAP	1
8	44-37-2	WINDOW, CAP	1
9	75-766-2	SCREW, PRESS 6-32 X .38 INCH	4
10	46-679-2	SPACER 1/4 INCH HEX X 5/8 LONG, 6-32	4
11	45-1353-1	PCA, POSTCAP SIGN ALIGN	1
12	75-752-2	PAN HEAD MACHINE SCREW 6-19 X 1/2 INCH TRISHANK FULL-THREAD	4
13	75-24-2	ROUND HEAD MACHINE SCREW 6-32 X .38 INCH	4
14	38-1307-1	CABLE ASSEMBLY, QCD INSPECT CAMERA	2
15	128-1872-2	DECAL, HEAVY DUTY (Identifies HD 105-792-1 assemblies)	2

PARTS DESCRIPTION LISTING

Index No.	Part Number	Description	Qty.
1	20-3764-1	KIT-HD QCD RISER (Consists Of:)	1
2	119-50-1	RISER ASSEMBLY -QCD HD	2
3	62-119-1	FOOT ASSEMBLY -QCD RISER	2
4	171-356-005	PANEL-QCD RISER, FRONT	1
5	171-357-005	PANEL-QCD RISER, BACK	1
6	53-278-1	CAP ASSEMBLY-QCD RISER, RIGHT	1
7	53-279-1	CAP ASSEMBLY-QCD RISER, LEFT	1
8	117-231-005	HANGER-QCD RISER	1
9	77-45-2	WASHER-FLAT 3/16 INCH	8
10	75-758-2	SOCKET BUTTON HEX CAP SCREW 1/4-20 X .63 INCH	8
11	76-85-2	NUT-KEPS 1/4-20	8
12	77-23-2	WASHER-FLAT 1/2 INCH	8
13	74-21-2	HEX HEAD CAP SCREW 1/2-13X1.75 INCH	4
14	76-25-2	NUT-HEX 1/2-13 ZP	4
15	74-169-2	BOLT-ANCHOR 1/2X3 3/4 INCH	4
16	75-441-2*	SCREW-SELF TAPPING 8-32X.50 INCH	16
17	38-1367-1*	CABLE EXTENSION-QCD IR/LASER HARNESS	8

* Cable extensions and screws are used with floor sensors that are not shown. Floor sensors are relocated from towers during initial installation. See sheet 3, item 41 (125-507-1, SENSOR ASM-PHOTO QCD).