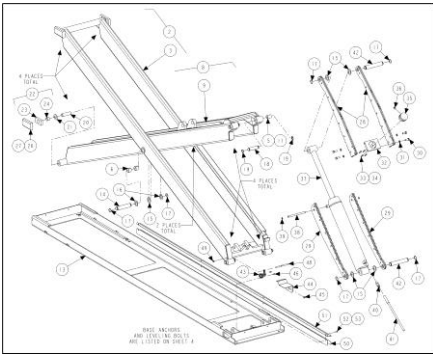
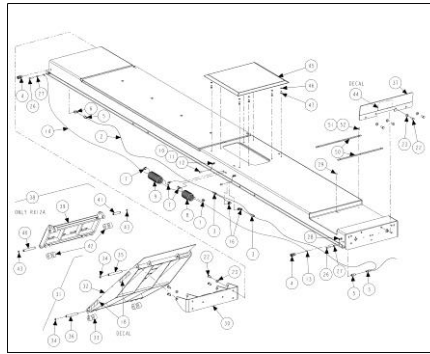


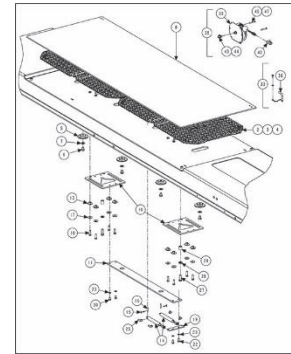
**RX10K, RX10KL & RX12K (EXPORT RX45K, RX45KL & RX55K) LIFT RACKS**



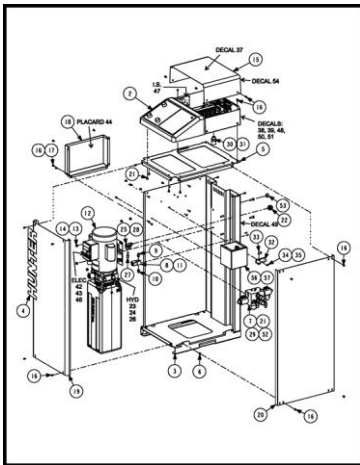
**SHEET 3**



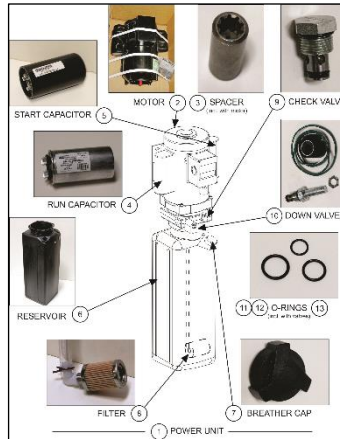
**SHEET 4**



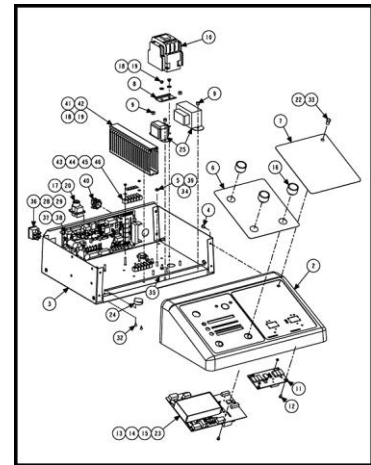
**SHEET 5**



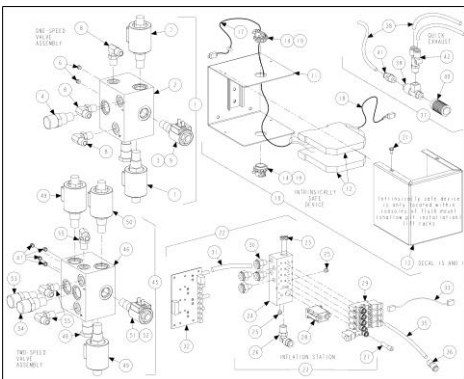
**SHEET 6**



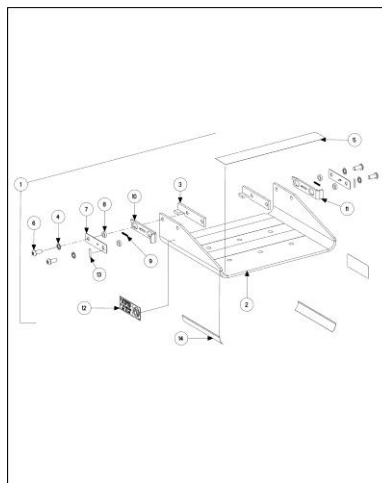
**SHEET 7**



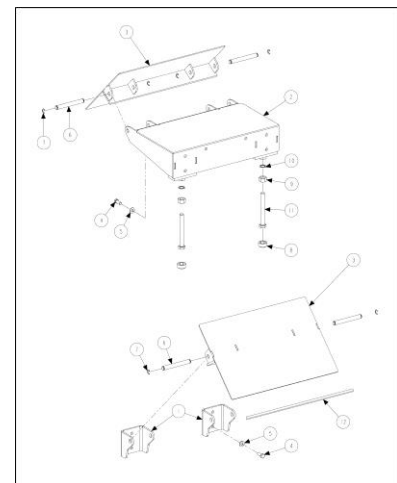
**SHEET 8**



**SHEET 9**



**SHEET 10**



**SHEET 11**

**SHEET 12 - MERCEDES-BENZ AND BMW UNIQUE COMPONENTS**

**RX10K, RX10KL & RX12K (EXPORT RX45K, RX45KL & RX55K) LIFT RACKS**

REFER TO NEXT SHEET FOR PARTS DESCRIPTION LISTING

PARTS DESCRIPTION LISTING

Sheet	Description
3	LEGS AND BASE
4	RUNWAY AIR, WHEEL STOP AND RAMP
5	SLIP PLATE AND POWERSLIDE
6	RX CONSOLE *
7	POWER UNIT REPLACEMENT COMPONENTS
8	UPPER RX CONSOLE *
9	RX CONSOLE COMPONENTS *
10	WORKSTEP
11	FLUSH-MOUNT RAMPS
12	MERCEDES-BENZ AND BMW UNIQUE COMPONENTS

**RUNWAY ASSEMBLIES (See Sheets 4, 5 and 6)**

Part # RH	Part # LH	Harsh Duty RH***	Harsh Duty LH***	DOMESTIC LIFTS	EXPORT LIFTS
170-1264-1-PPP	170-1265-1-PPP	170-1416-1-ZPP	170-1415-1-ZPP	RX10K, RX10KF	-
170-1284-1-PPP	170-1285-1-PPP	170-1420-1-ZPP	170-1419-1-ZPP	RX10KPS, RX10KIS, RX10KFPS, RX10KFIS	RX45KPS, RX45KIS, RX45KFPS, RX45KFIS
170-1262-1-PPP	170-1263-1-PPP	170-1418-1-ZPP	170-1417-1-ZPP	RX10KL, RX10KLF	-
170-1282-1-PPP	170-1283-1-PPP	170-1422-1-ZPP	170-1421-1-ZPP	RX10KLPS, RX10KLIS, RX10KLFPS, RX10KLFIS	RX45KLPS, RX45KLIS, RX45KLFPS, RX45KLFIS
170-1280-1-PPP	170-1281-1-PPP	170-1424-1-ZPP	170-1423-1-ZPP	RX12K, RX12KF	-
170-1278-1-PPP	170-1279-1-PPP	170-1426-1-ZPP	170-1425-1-ZPP	RX12KPS, RX12KIS, RX12KFPS, RX12KFIS	RX55KPS, RX55KIS, RX55KFPS, RX55KFIS

\*\*\*Harsh duty racks are available in North America. Zinc undercoat components / assemblies have suffix -ZPP paint code.

**DOMESTIC CONSOLES (See Sheets 7, 8 and 9)**

Part #	Console Description	Lift Models
30-557-1	CONSOLE ASSEMBLY-RX	RX10K, RX10KL, RX12K, RX10KF, RX10KLF, RX12KF
30-557-1-PS	CONSOLE ASSEMBLY-RX PS	RX10KPS, RX10KLPS, RX12KPS, RX10KFPS, RX10KLFPS, RX12KFPS
30-557-1-IS	CONSOLE ASSEMBLY-RX IS	RX10KIS, RX10KLIS, RX12KIS, RX10KFIS, RX10KLFIS, RX12KFIS

\* IMPORTANT NOTE WHEN ORDERING REPLACEMENT POWER UNIT AND MANIFOLD PARTS: It is important to verify the existing equipment. Each power unit is clearly marked with its model number on the name plate and each manifold have the part number on top.

\*\* Addition of Intrinsically Safe Barrier Kit (20-3148-1) required for flush-mount installations.

**EXPORT\*\* CONSOLES (See Sheets 7, 8 and 9)**

Part #	Console Description	Lift Models	Lift Power
30-562-1-PS	CONSOLE ASM – RX PS 216E	RX45KPS-216E, RX45KLPS-216E, RX55KFPS-216E	230 Volt - 1 Phase – 60 HZ
30-562-1-IS	CONSOLE ASM – RX IS 216E	RX45KIS-216E, RX45KLIS-216E, RX55KFIS-216E	230 Volt - 1 Phase – 60 HZ
30-563-1-PS	CONSOLE ASM – RX PS 215E	RX45KPS-215E, RX45KLPS-215E, RX55KFPS-215E	230 Volt - 1 Phase – 50 HZ
30-563-1-IS	CONSOLE ASM – RX IS 215E	RX45KIS-215E, RX45KLIS-215E, RX55KFIS-215E	230 Volt - 1 Phase – 50 HZ
30-564-1-PS	CONSOLE ASM – RX PS 435E	RX45KPS-435E, RX45KLPS-435E, RX55KFPS-435E	230, 400, 460 Volt - 3 Phase – 50 HZ
30-564-1-IS	CONSOLE ASM – RX IS 435E	RX45KIS-435E, RX45KLIS-435E, RX55KFIS-435E	230, 400, 460 Volt - 3 Phase – 50 HZ

\* IMPORTANT NOTE WHEN ORDERING REPLACEMENT POWER UNIT AND MANIFOLD PARTS: It is important to verify the existing equipment. Each power unit is clearly marked with its model number on the name plate and each manifold have the part number on top.

\*\* RX45K, RX45KL and RX55K ARE EXPORT ONLY MODELS: RX45K, RX45KL and RX55K are not available in North America.

**THRESHOLD COMPONENTS (Not Illustrated)**

	Part Number	Description	Qty.
1	69-1377-005	COVER, HYDRAULIC HOSE TOP – WIDE (painted galv steel)	1
2	69-1378-005	COVER, HYDRAULIC LINES BOTTOM –WIDE (painted galv steel)	1
3	69-1386-005	COVER, HYDRAULIC HOSE CENTER RX	1
4	74-423-2	BOLT, ANCHOR 1/4 X 2 1/4 INCH HAMMER (Threshold Anchors)	10

**Hydraulic Hoses (Quick Reference)**

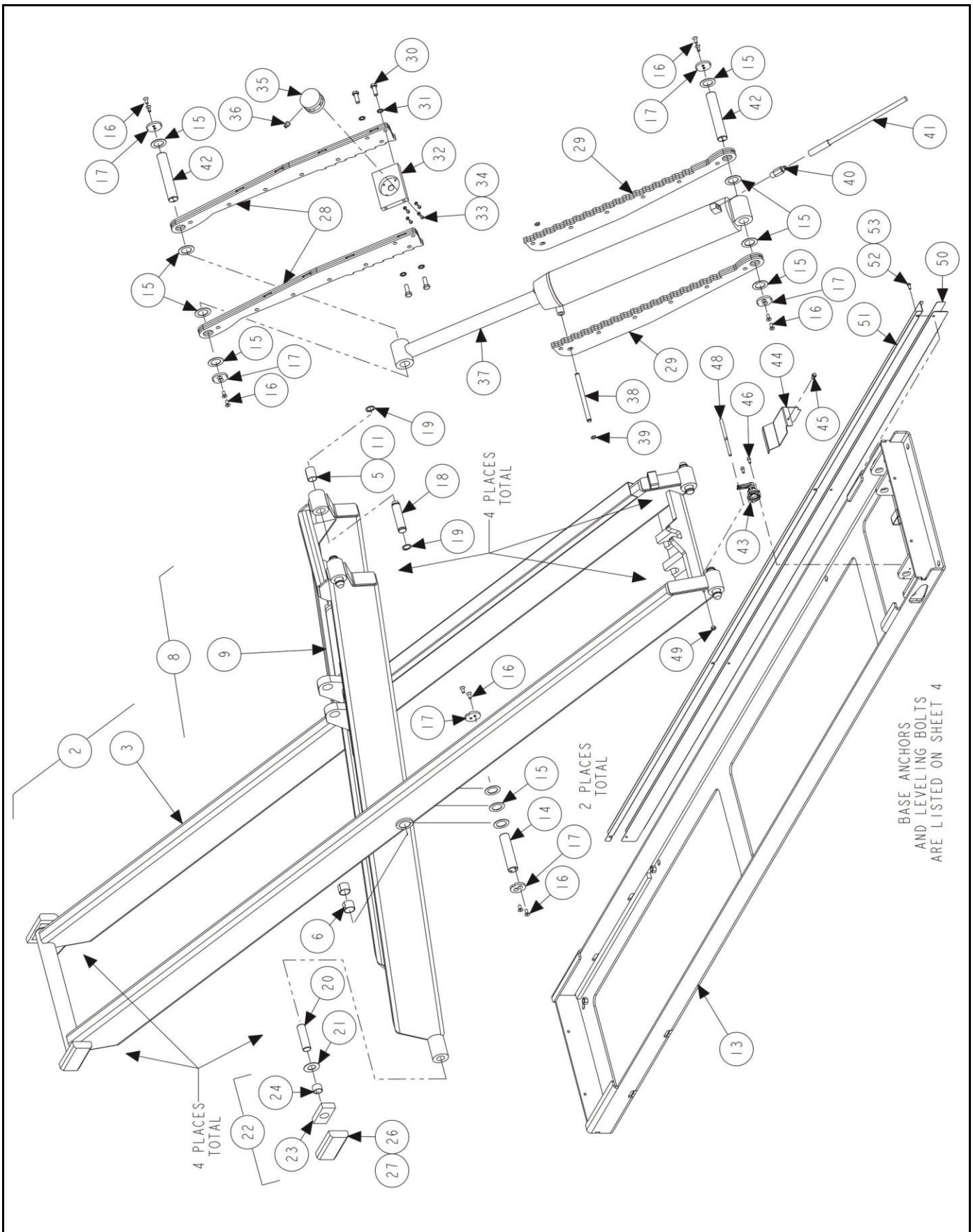
1	137-115-2	HOSE, 3/8 INCH RX RACK (Ref. sheet 3, item 41) (manifold to cylinder)	2
2	137-98-2	HOSE, 3/8 INCH RM RACK( Ref sheet 6 , item 29) (pump to manifold)	1

Additional parts information is available on hunter web site (search HFTL Common Parts).



11250 HUNTER DRIVE BRIDGETON, MO 63044

PPP-Paint Code Required  
A/R-As Required  
REF-Reference



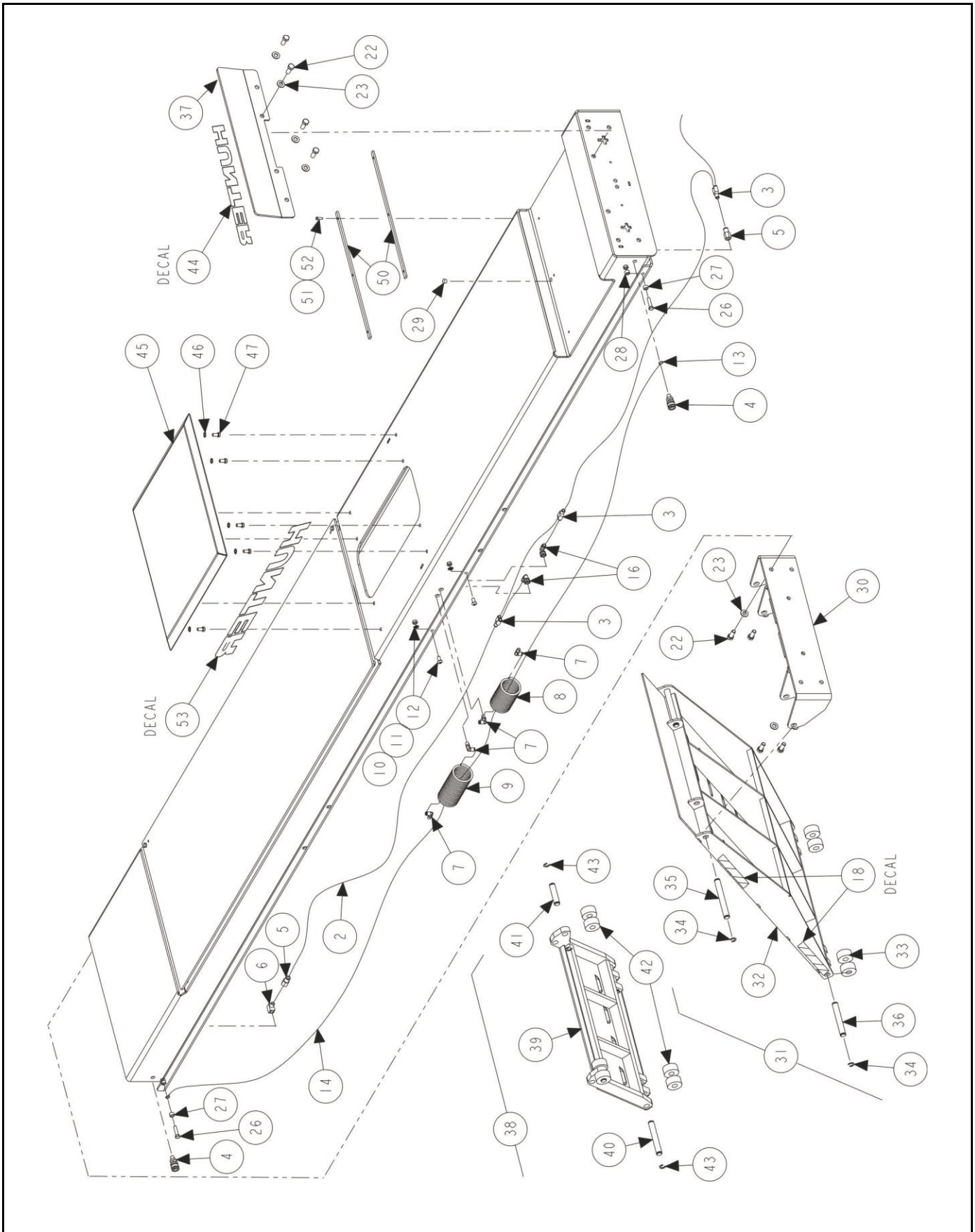
## LEGS AND BASE

REFER TO NEXT SHEET FOR PARTS DESCRIPTION LISTING

## PARTS DESCRIPTION LISTING

Index No.	Part Number	Description	Qty.
1	SEE SHEET 2 FOR PART #	RUNWAY ASSEMBLY (Legs Consisting Of:)	1
2	13-287-1-PPP	LEG, OUTER SCISSORS 10K W/BRG (RX10K) (Consisting Of:)	1
OR	13-310-1-PPP	LEG, OUTER SCISSORS 12K W/BRG (RX12K) (Consisting Of:)	1
3	13-285-1-PPP	LEG, OUTER SCISSORS 10,000# (RX10K)	1
OR	13-309-1-PPP	LEG, OUTER SCISSORS 12,000# (RX12K)	1
4	20-2305-1	KIT, RX OUTER BUSHINGS (Not Illus.) (Consisting Of:)	1
5	130-167-2	BEARING, SLEEVE 1.00 X 1.50 INCH	2
6	130-168-2	BEARING, SLEEVE 1.25 X 1.00 INCH	4
7	FIELD OBTAIN	ADHESIVE, LOCTITE #609 (Not Illus.)	A/R
8	13-286-1-PPP	LEG, INNER SCISSORS 10K W/BRG (RX10K) (Consisting Of:)	1
OR	13-312-1-PPP	LEG, INNER SCISSORS 12K W/BRG (RX12K) (Consisting Of:)	1
9	13-284-1-PPP	LEG, INNER SCISSORS 10,000# (RX10K)	1
OR	13-311-1-PPP	LEG, INNER SCISSORS 12,000# (RX12K)	1
10	20-2435-1	KIT, RX INNER BUSHINGS (Not Illus.) (Consisting Of:)	1
11	130-167-2	BEARING, SLEEVE 1.00 X 1.50 INCH	2
12	FIELD OBTAIN	ADHESIVE, LOCTITE #609 (Not Illus.)	A/R
13	72-492-1-PPPP-ZPP	BASE ASSEMBLY, RX10 AND RX16	1
14	135-630-2	PIN, RX LEG CONNECTION	2
15	77-290-2	WASHER, FLAT 2.00 X 1.25 INCH	14
16	74-254-2	FLAT HEAD SOCKET CAP SCREW 5/16-18 X .75 INCH	16
17	53-223	CAP, RX PIN RETAINER	8
18	135-455-2	PIN, RUNWAY/BASE CONNECTIONS	4
19	112-88-2	SNAP RING, TRUARC 5100-100	8
20	135-456-2	PIN, RUB BLOCK, RX	4
21	77-289-2	WASHER, FLAT 2.00 X 1.00 INCH	4
22	121-257-1	BLOCK ASSEMBLY, SCISSORS RUB (Consisting Of:)	4
23	121-254-2	BLOCK-RUB INSERT	1
24	130-200-2	BEARING-SLEEVE 1.00 X .75 INCH	1
25	FIELD OBTAIN	ADHESIVE, LOCTITE #609 (Not Illus.)	A/R
26	121-253-2	BLOCK, SCISSORS RUB	4
27	FIELD OBTAIN	LUBRICANT, EP-2 GREASE	A/R
28	144-126-1-005	LOCK, RX LAMINATED TOP	2
29	144-127-1-005	LOCK, RX LAMINATED BOTTOM	2
30	74-47-2	HEX HEAD CAP SCREW 7/16-14 X 1.25 INCH	4
31	77-53-2	WASHER, LOCK 7/16 INCH INTERNAL TOOTH	4
32	51-1809-005	PLATE, SCISSORS LOCK CYLINDER	1
33	75-19-2	ROUND HEAD MACHINE SCREW 10-24 X 1/2 INCH	4
34	77-11-2	WASHER, LOCK 10 INTERNAL TOOTH	4
35	140-56-2	CYLINDER, LOCK RELEASE	1
36	145-281-2	FITTING, 1/4 HOSE X 1/8 INCH NPT	1
37*	140-87-2*	CYLINDER, RX LIFT V3*	1
38	135-453-2	PIN, SCISSORS LOCK SUPPORT	1
39	112-15-2	SNAP RING, #5133-50 OR EQUAL	2
40	108-209-2	VALVE, VELOCITY FUSE 8.0 GPM	1
41	137-115-2	HOSE, 3/8 INCH RX RACK	1
42	135-631-2	PIN, RX CYLINDER CONNECTION	2
43	125-452-1	SENSOR, LIFT RACK GEN 2	1
44	69-1320-005	COVER, RX-10 SENSOR	1
45	75-317-2	SCREW, THREAD ROLLING 1/4-20 X 5/8 INCH	1
46	75-604-2	SOCKET HEAD CAP SCREW 1/4-20 X .63 INCH LONG	2
47	FIELD OBTAIN	ADHESIVE, LOCTITE #242	A/R
48	135-467-2	PIN, RX SENSOR	1
49	76-32-2	NUT, GRIP 5/16-18	1
50	54-1128-PPP	CHANNEL-HOSE ROUTING BOTTOM (painted zinc plate steel)	2
51	69-1669-PPP	COVER-HOSE CHANNEL (painted zinc plate steel)	2
52	75-758-2	BUTTON HEAD CAP SCREW 1/4-20 X 5/8 INCH	8
53	76-85-2	NUT, KEPS 1/4-20	8

\* For cylinder repair kits, refer to hunter web site (HFTL Common Parts).

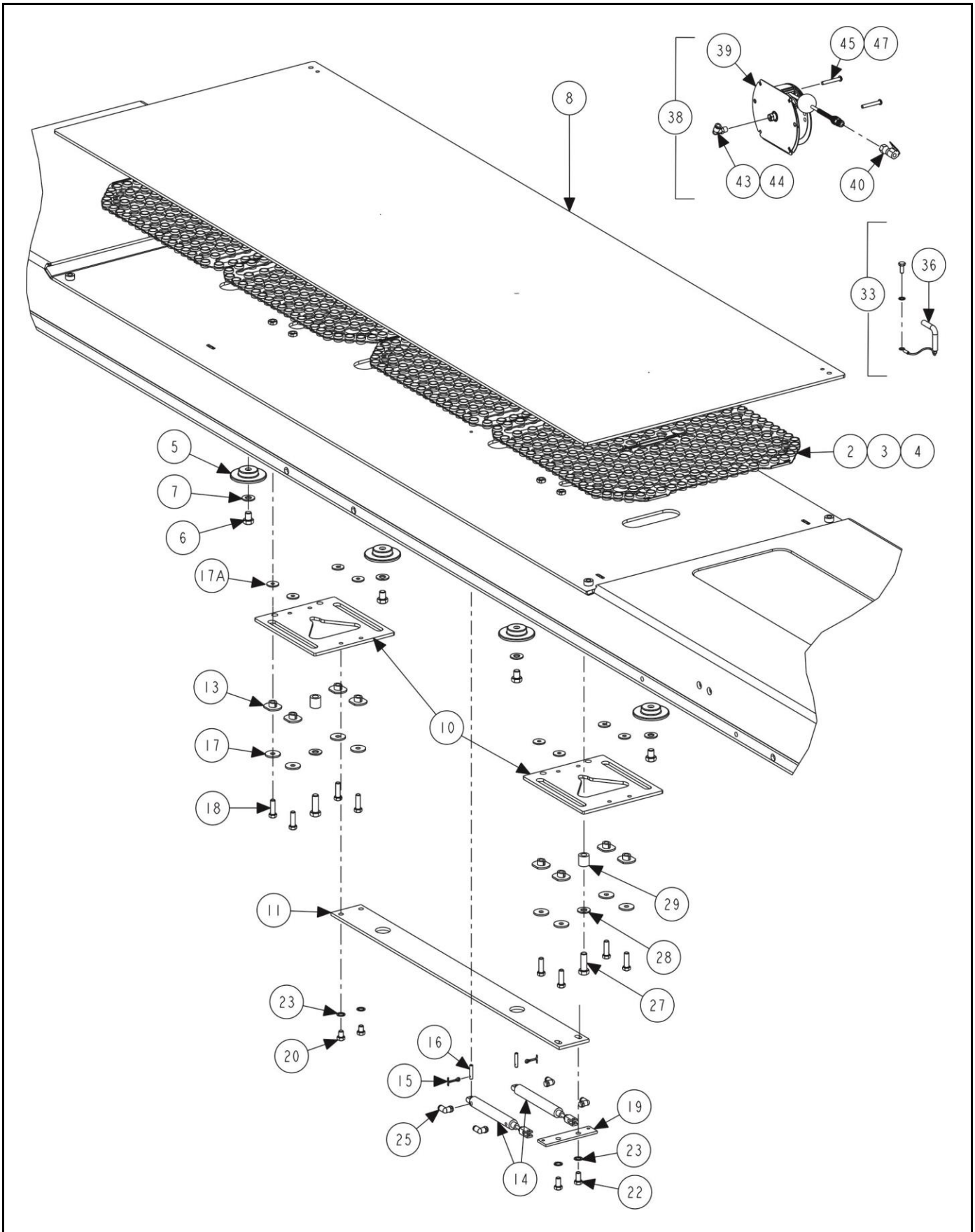


## RUNWAY AIR, WHEEL STOP AND RAMP

REFER TO NEXT SHEET FOR PARTS DESCRIPTION LISTING

## PARTS DESCRIPTION LISTING

Index No.	Part Number	Description	Qty.
1	20-1618-1	KIT, RX AIR SUPPLY (Not Illustrated) (Consists of:)	1
2	16-321-2	TUBE, 5/16 INCH OUTSIDE DIAMETER	65 FT.
3	145-292-2	FITTING, 5/16 INCH UNION Y	3
4	L30-98	QUICK DISCONNECT SOCKET	2
5	145-295-2	FITTING, 1/4 INCH FPT TO 5/16 INCH TUBE	2
6	145-225-2	FITTING, STREET ELBOW 1/4 INCH NPT	1
7	145-409-2	FITTING, 1/4 INCH TUBE - 1/8 INCH NPT METAL ELBOW	2
8	137-107	HOSE, COIL FRONT (18 COILS)	1
9	137-108	HOSE, COIL REAR (25 COILS)	1
10	74-327-2	SOCKET BUTTON HEAD CAP SCREW 3/8-16 CP	4
11	77-216-2	WASHER, LOCK 3/8 INCH HELICAL	4
12	76-18-2	NUT, GRIP 3/8-16	4
13	106-75-2	SLEEVE, CABLE	3
14	39-42-2	CABLE, AIR LINE KIT	20 FT.
15	94-13-2	TIE, CABLE (Not Illustrated)	4
16	145-419-2	FITTING, BULKHEAD ELBOW 5/16 INCH TUBE - 1/8 INCH NPT	2
17	20-2460-1	KIT, RX10 RACK INSTALLATION (Not Illustrated) (Consisting Of:)	1
18	128-245-2	DECAL, YELLOW & BLACK	8
19	74-170-2	BOLT, ANCHOR 1/2X5 1/2 INCH (Base Anchors) (Not Illustrated)	8
20	74-423-2	BOLT, ANCHOR 1/4 X 2 1/4 INCH HAMMER (Threshold Anchors) (Not Illus.)	10
21	74-349-2	HEX HEAD CAP SCREW 1/2-13 X 3.00 INCH (Leveling Bolts) (Not Illustrated)	12
22	74-11-2	HEX HEAD CAP SCREW 1/2-13X1.25 INCH GRADE 5	16
AND	76-25-2	NUT-HEX 1/2-13	16
23	77-23-2	WASHER-FLAT 1/2 INCH	16
24	137-97-2	HOSE, 1/4 INCH CROSSOVER (Not Illustrated)	1
25	16-728-2	TUBE, SPIRAL CABLE PROTECTOR (Not Illustrated)	6 FT.
26	74-70-2	HEX HEAD CAP SCREW 3/8-16X1.50 INCH	4
27	L31-45-2	SPACER	8
28	76-18-2	NUT-GRIP 3/8-16	4
29	43-149-2	PLUG, 5/8 DIA X .44 INCH LONG-BLACK	4
30	14-1251-1-PPP	BRACKET ASSEMBLY, RAMP RX10	2
31	147-193-1-PPP/ZPP	RAMP, ASSEMBLY RX10 WITH WHEELS (Consisting Of:)	2
32	147-192-1-PPP/ZPP	RAMP ASSEMBLY, RX SERIES ("HUNTER" EMBOSSED)	1
33	111-22-2	ROLLER, RAMP	4
34	112-11-2	SNAP RING #5133-75	8
35	97-583-2	SHAFT, RAMP CONNECTION	2
36	97-243-2	SHAFT, RAMP BOTTOM	2
37	51-2422-PPP/ZPP	PLATE, FRONT WHEEL STOP, RX10	2
38	147-104-1-PPP/ZPP	RAMP ASSEMBLY, RX-12 EXTENSION (RX12A Only) (Consisting Of:)	2
39	147-103-1-PPP/ZPP	RAMP, RX-12 EXTENSION ASSEMBLY	1
40	97-243-2	SHAFT, RAMP BOTTOM	2
41	97-217-2	SHAFT, RAMP EXTENSION	2
42	111-22-2	ROLLER, RAMP	6
43	112-11-2	SNAP RING #5133-75	8
44	128-1752	DECAL, HUNTER WHITE, 19 INCH (On wheel stops)	2
45	69-1311-1-PPP/ZPP	COVER WELDMENT, RUNWAY CYLINDER	1
46	77-21-2	WASHER, LOCK 3/8 INCH INTERNAL TOOTH	8
47	74-59-2	HEX HEAD CAP SCREW 3/8 16 X .75 INCH	8
48	20-2532-1	KIT, TURNPLATE (Consisting Of:)	1
49	25-172-1	TURNPLATE ASSEMBLY, 1.5 INCH / 50 mm SS (Refer to Form 7-50) (Not Illus.)	2
50	57-846	BAR, TURN PLATE GUIDE	4
51	75-574-2	SBHCS-1/4-20 X .75 INCH	12
52	76-85-2	NUT-KEPS 1/4-20	12
53	128-1753-2	DECAL, HUNTER WHITE, 23 INCH (On side of each runway)	2

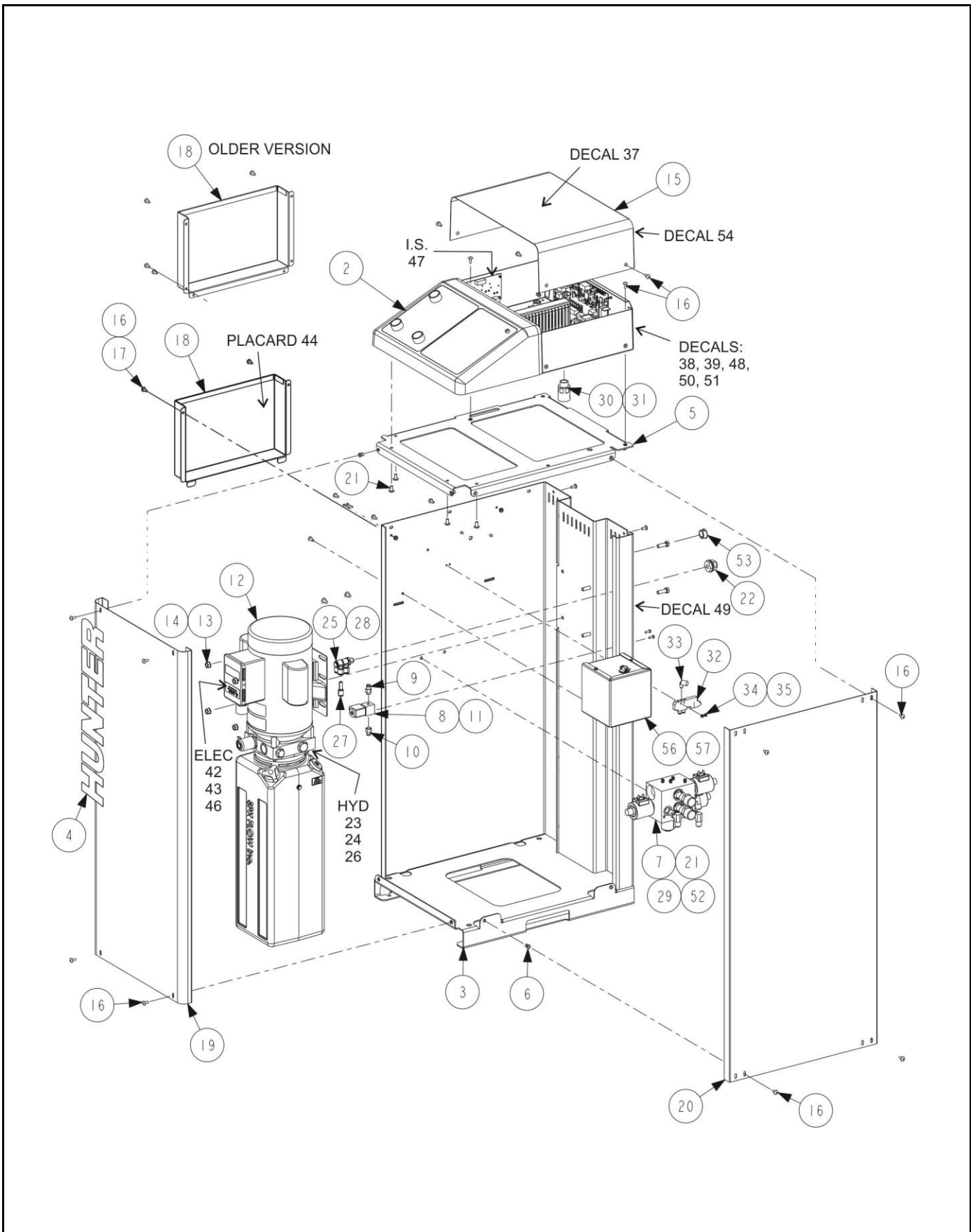


**SLIP PLATE AND POWERSLIDE**  
REFER TO NEXT SHEET FOR PARTS DESCRIPTION LISTING

## PARTS DESCRIPTION LISTING

Index No.	Part Number	Description	Qty.
1	SEE SHEET 2	RUNWAY ASSEMBLY (Slip Plates Consisting Of:)	1
2	41-200-2	RETAINER SLIP PLATE BRIDGE – HEAVY DUTY	4
3	98-467-2	SPRING, COMPRESION .40 OD 2 INCH LONG	8
4	130-65-2	BEARING, 9/16 INCH GROUND DELRIN 500P	392
5	41-213-2	RETAINER, SLIDE PLATE	4
6	74-344-2	HEX HEAD CAP SCREW 1/2-13 X .63 INCH	4
7	77-23-2	WASHER, FLAT 1/2 INCH	4
8	51-2771-1-PPP/-ZPP	PLATE, WELDMENT SLIP 24 INCH WIDE	1
9	43-91-2	PLUG, DOMED 1.50 INCH DIAMETER HOLE (IS Hole Cover) (Not Illus.)	2
10	51-2421-2	PLATE, SLIP LOCK, RX10 (-PS & -IS)	2
11	57-708	BAR TIE, SLIP PLATE LOCK (-PS & -IS)	1
12	20-2570-1	KIT, POWERSLIDE HARDWARE (Consisting Of:)	1
13	113-246-2	BUSHING, FLANGED SLIP PLATE LOCK (-PS & -IS)	8
14*	140-65-2*	CYLINDER, AIR DOUBLE ACTION 0.75 BORE x 3.00 INCH STROKE (-PS & -IS)	2
15	135-447-2	PIN, COTTER 3/32 DIAMETER x 1.0 INCH (-PS & -IS)	4
16	135-448-2	PIN, SLIP PLATE LOCK CYLINDER (-PS & -IS)	4
17	77-468-2	WASHER, FLAT 3/8 INCH SPECIAL (-PS & -IS)	8
	77-469-2	WASHER, FLAT 3/8 INCH (-PS & -IS)	8
18	74-661-2	HEX HEAD CAP SCREW 3/8-16 x 1.25 INCH GRADE 5 (-PS & -IS)	8
19	57-959-2	BAR-CYLINDER MOUNT (-PS & -IS)	1
20	74-659-2	HEX HEAD CAP SCREW 3/8-16X.75 INCH (-PS & -IS)	10
21	94-13-2	TIE CABLES (Not Illustrated)	2
22	74-658-2	HEX HEAD CAP SCREW 3/8-16 x .50 INCH (-PS & -IS)	2
23	77-465-2	WASHER, LOCK 3/8 INCH INTERNAL TOOTH (-PS & -IS)	12
24	145-318-2	FITTING, 5/32 INCH Y (-PS & -IS) (Not Illus.)	2
25	145-367-2	1/8 INCH NPT - 5/32 INCH PTC ELBOW (-PS & -IS)	4
26	16-450-2	TUBE, AIR 5/32 INCH OUTSIDE DIAMETER (-PS & -IS) (Not Illus.)	12 ft.
27	74-660-3	HEX HEAD CAP SCREW 1/2-13 X 1.50 INCH COATED (-PS & -IS)	2
28	77-466-2	WASHER, FLAT 1/2 INCH (-PS & -IS)	2
29	46-641-2	SPACER, RX10 PS (-PS & -IS)	2
30	128-202-2	DECAL, HANDS OFF (-PS & -IS)	1
31	128-203-2	DECAL, RX RUNWAY 16,000	2
32	128-1364-2	DECAL, MADE IN USA #4	1
33	20-641-1	KIT, 2-LOCK PIN & CABLE ASSEMBLY (Consisting Of:)	2
34	76-85-2	NUT, KEPS 1/4-20	2
35	75-333-2	HEX HEAD CAP SCREW 1/4-20 x .63 INCH	2
36	135-208-2	PIN, LOCK WITH CABLE	2
37	77-13-2	WASHER, LOCK 1/4 INCH INTERNAL TOOTH	2
38	20-2265-1	KIT, HOSE REEL FOR -IS LIFTS (-IS only) (Consisting Of:)	1
39	137-109-2	HOSE-REEL RETRACTING -IS LIFTS (-IS only)	4
40	145-341-2	FITTING, AIR CHUCK LOCK-ON OPEN (-IS only)	4
41	74-486-2	HEX WASHER HEAD 5/16-18 X 1 INCH SELF DRILLING (Not Used)	8
42	16-986-2	TUBE, 5/16 INCH OD BLACK (Not Illustrated)	190 FT
43	145-183-2	FITTING, 1/4 INCH NPT ELBOW SWIVEL (For Slip Plate Location)	4
44	145-184-2	FITTING, 1/4 INCH NPT ADAPTOR (For Turnplate Location) (Not Shown)	2
45	75-773-2	SOCKET BUTTON HEAD CAP SCREW 1/4-20 X 2.25 BO	8
46	75-774-2	SOCKET BUTTON HEX CAP SCREW 1/4-20 X 3.25 INCH (Not Used)	8
47	76-85-2	NUT, KEPS 1/4-20.	8
48	75-758-2	SOCKET BUTTON HEAD CAP SCREW 1/4-20 X .63 INCH (Not Used)	8

\* Clevis, pin and two c-clips is available for PS cylinders as service part 140-133-2.

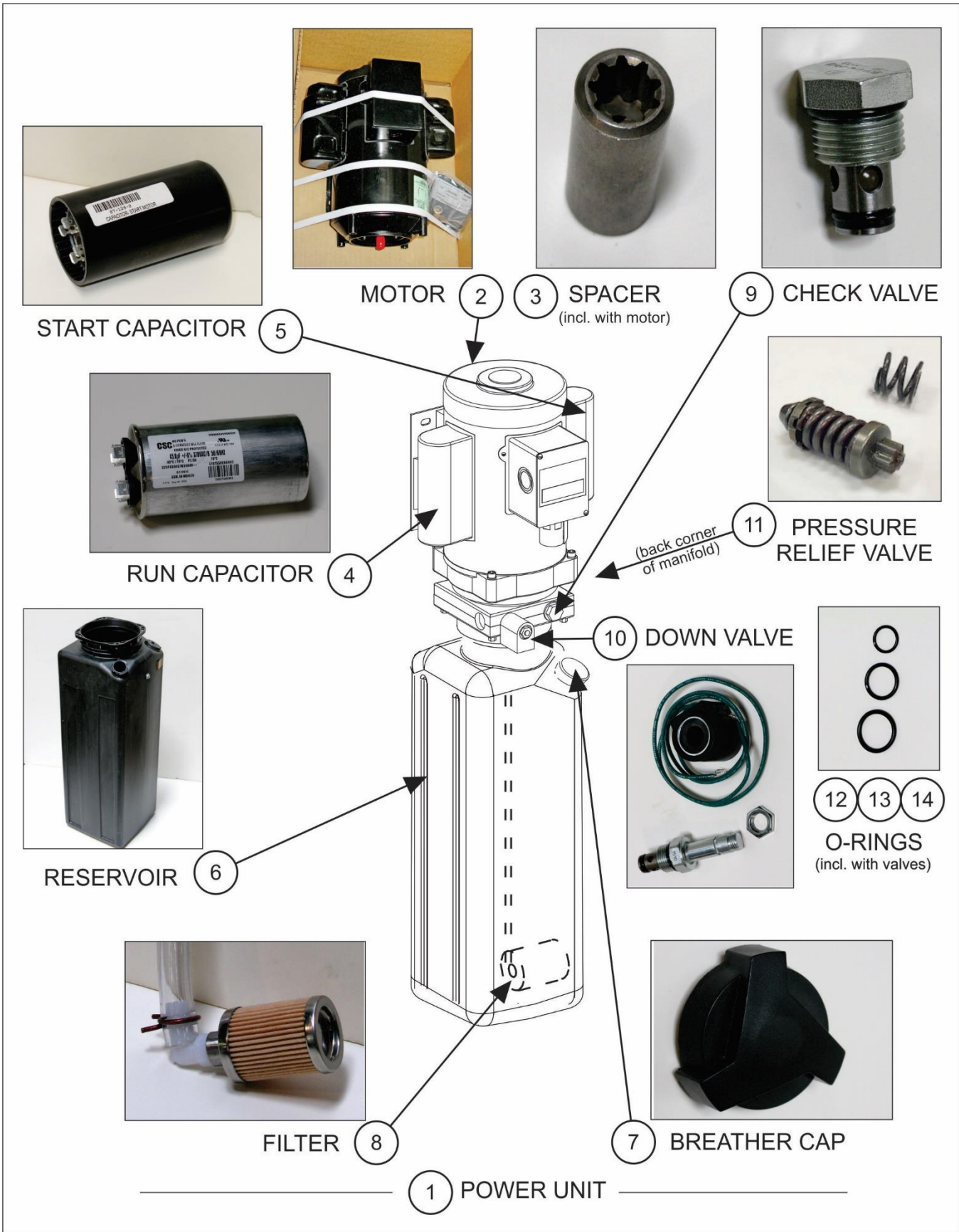


## RX CONSOLE

REFER TO NEXT SHEET FOR PARTS DESCRIPTION LISTING

## PARTS DESCRIPTION LISTING

Index No.	Part Number	Description	Qty.
1	30-557-1-suffix	CONSOLE, LIFT RACK ( -IS, -PS) (See Sheet 2)	1
2	30-558-1-suffix	CONSOLE, UPPER RX ( -IS, -PS) (See Sheet 9)	1
3	30-555-1-PPP	CONSOLE, RX WELDMENT	1
4	128-1753-2	DECAL, HUNTER WHITE, 23 INCH	1
5	51-3081-PPP	PLATE, TOP RX CONSOLE	1
6	76-415-2	NUT, HEX INSERT 10-32	17
7	108-266-3	VALVE, ASSEMBLY-2 SPEED LOWER (See Sheet 9)	1
8	108-177-2	VALVE, 3 WAY AIR (RX LOCKS 06)	1
9	145-216-2	FITTING, 5/16 TUBEX1/8 NPT ADPT	1
10	145-281-2	FITTING, 1/4 HOSE X 1/8 NPT	1
11	-	SCREWS (come with item 8)	2
12	139-64-2	POWERUNIT ASSEMBLY, 3500 PSI (All 1 phase (all domestic and-12UE))(Sheet 8)	1
OR	139-65-2	POWER UNIT ASSEMBLY, 3550 2.2 GPM 50 HZ (All 3 phase (-435E))*	1
AND	38-1012-1	CABLE ASSEMBLY, MOTOR BLACK RX40 (All 3 phase (-435E))	1
AND	38-1013-1	CABLE ASSEMBLY, MOTOR RED RX40 (All 3 phase (-435E))	1
AND	38-1014-1	CABLE ASSEMBLY, MOTOR ORANGE RX40 (All 3 phase (-435E))	1
13	74-39-2	HEX HEAD CAP SCREW 5/16-18 X 1.00 INCH	2
14	76-177-2	NUT-KEPS 5/16-18 INCH	4
15	69-1615-1-005	COVER ASSEMBLY, RX LIFT CONSOLE	1
16	75-312-2	TRUSS HEAD MACHINE SCREW 10-32X1/2 INCH	23
17	76-61-2	NUT-KEPS 10-32	2
18	67-757-005	BOX, DOCUMENT STORAGE (Newer version with tab and slot design)	1
OR	67-743-PPP	BOX, MANUAL STORAGE (Older version with six fasters)	1
19	171-319-1-PPP	COVER ASSEMBLY, FRONT	1
20	171-320-1-PPP	COVER ASSEMBLY, SIDE	1
21	75-908-2	TRUSS HEAD MACHINE SCREW 1/4-20 X 1/2 INCH	6
22	145-224-2	COUPLING, BULKHEAD	1
23	145-396-2	FITTING, STRAIGHT THREAD O RING CONN	1
24	145-397-2	FITTING, SW NUT BRAN TEE 3/8 INCH TU	1
25	145-398-2	FITTING, DOUBLE BRANCH MALE ELL	1
26	145-296-2	FITTING, CAP 3/8 INCH JIC	1
27	145-399-2	FITTING, REDUCER 5/16-1/4 INCH TUBE	1
28	145-400-2	FITTING, PLUG 5/16 TUBE	1
29	137-98-2	HOSE, 3/8 INCH RM RACK (pump to manifold, 16 inch long, 9/16-18 female ends)	1
30	145-262-2	FITTING, 1/2 INCH PLASTIC CONDUIT	2
31	16-402-2	TUBING, 1/2 INCH PLASTIC CONDUIT	18.5 in.
32	108-197-2	VALVE, 5 PORT2	1
33	145-395-2	FITTING, ELBOW M5 X .8 X 1/4 INCH TUBE	1
34	75-199-2	ROUND HEAD MACHINE SCREW 4-40 X 7/8 INCH	2
35	76-59-2	NUT, KEPS 4-40	2
36	94-13-2	TIE-CABLE (Not Illustrated)	A/R
37	128-1745-2	DECAL, RX-K OPERATION	1
38	128-158-2	DECAL, SERVICEABLE WARNING	1
39	24-190-2	NAMEPLATE, HUNTER, COM/PATENTS	1
40	16-321-2	TUBE, 5/16IN O.D. (Inflation Station Only) (Not Illus.)	37 in.
41	16-423-2	TUBE, AIR .172 ID (To Locks and PowerSlide) (Not Illus.)	32 in.
42	21-40-2	CONNECTOR, WIRE NUT TYPE	2
43	21-27-2	CONN, WIRE NUT TYPE Y SCOTCHLOK	2
44	128-1025-2	DECAL, WL2200 CARD	1
45	94-53-2	TIE-WIRE 7.9 IN FOR #10 SCREW (Not Illustrated)	1
46	37-271	WIRE LEAD, POWER	2
47	185-28-1	MANIFOLD ASSEMBLY, SENSOR AIR (See Sheet 9)	1
48	128-1161-2	DECAL, ALI SAFETY WLSIAO1	1
49	128-1179-2	DECAL, NON-INCENDIVE LOC	1
50	128-1358-3	DECAL, LIFT RACK CONSOLE	1
51	128-1159-2	DECAL, ALI/ETL CERT.	1
52	37-720-1	WIRE ASSEMBLY, SOLENOIDS RX	1
53	43-111-2	PLUG, 7/8 INCH DIAMETER HOLE	1
OR	18-475-2	SWITCH, EMERGENCY STOP (For Export Models Only) (Not Illustrated)	1
AND	38-1081	CABLE, E-SWITCH RX40 (For Export Models Only) (Not Illustrated)	1
54	128-1746-2	DECAL, RX-K CONSOLE WIRING	1
55	38-1062-2	CABLE, SENSOR 75 FEET (Burndy) (Not Illus.)	1
56	20-3148-1	INTRINSIC BARRIER KIT (Includes:)	1
57	75-413-2	SCREW, SELF-TAPPING 10-32 X .50 INCH	2

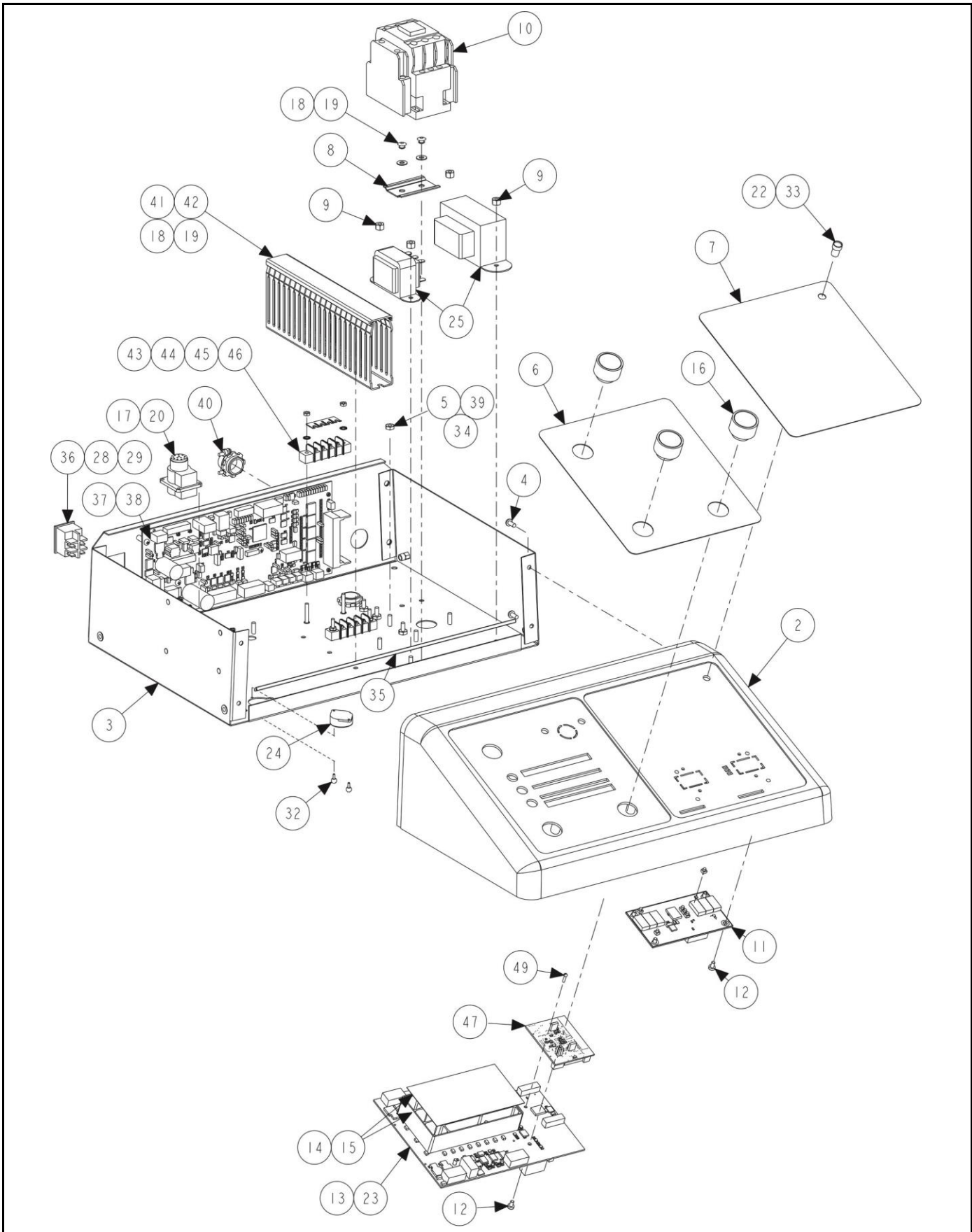


## POWER UNIT REPLACEMENT COMPONENTS

REFER TO NEXT SHEET FOR PARTS DESCRIPTION LISTING

## PARTS DESCRIPTION LISTING

Index No.	Part Number	Description	Qty.
1	139-64-2	<b>POWERUNIT ASSEMBLY, 3500 PSI 2.8GPM</b> (Domestic: 208/230 V / 1 PH / 60 Hz)	1
OR	139-66-2	<b>PUMP ASSEMBLY, 5HP 50HZ 1PH 3500PSI</b> (Export -50E Models Only - 208/230 V / 1 PH / 50 Hz)	1
OR	139-65-2	<b>POWER UNIT ASSEMBLY, 3550 2.2GPM 50HZ</b> (Export -435E Models Only - 230/380/400 V / 3 PH / 50 Hz)	1
2	129-240-2	<b>MOTOR, POWER UNIT SPX K-427 - REPLACEMENT MOTOR (SPX)</b> (Domestic: 208/230 V / 1 PH / 60 Hz) typically in stock	1
OR	129-242-2	<b>MOTOR, POWER UNIT SPX 5043-AC - REPLACEMENT MOTOR (SPX)</b> (Export 208/230 V / 1 PH / 50 Hz) NOT in stock	1
OR	129-260-2	<b>MOTOR, REPLACEMENT FOR 139-65-2 - REPLACEMENT MOTOR (SPX)</b> (Export 230/380/400 V / 3 PH / 50 Hz) NOT in stock	1
3	20-2262-2	<b>KIT-SPACER AND COUPLING SPX P.U</b> (motor to pump coupling) (included with replacement motors)	1
4	87-118-2	<b>CAPACITOR, MOTOR RUN SPX</b> (for domestic 208/230 V / 1 PH / 60 Hz) (ref Form 5918-T)	1
5	87-126-2	<b>CAPACITOR, MOTOR START (SPX P.U.)</b> (for domestic 208/230 V / 1 PH / 60 Hz)	1
6	139-59-2	<b>PUMP, RESERVOIR PLASTIC</b> (Replacement black reservoir for SPX-Fenner power units)	1
7	53-119-2	<b>CAP, BREATHER PLASTIC TANK</b> (replacement, plastic filler cap for plastic reservoirs)	1
8	20-1606-1	<b>KIT, OIL FILTER (includes: clear vinyl suction hose, hose clamp, elbow fitting, 15 micron suction filter and instructions (Ref form 4685-T))</b>	1
9	108-109-2	<b>VALVE, CHECK POWER UNIT</b> (SPX - Fenner)	1
10	108-143-2	<b>VALVE, 2-WAY SOLENOID 18 inch wires</b> (a.k.a: lower or down valve)	1
11	108-294-2	<b>VALVE-RELIEF 3625 PSI BYPASS</b> (FOR POWER UNIT 139-64-2, 139-65-2 AND 139-66-2)	1
12	124-146-2	<b>SEAL, O-RING 910 (for 7/8-14 threaded valve) (Use to replace o-ring of existing valve; replacement valves come with an o-ring.)</b>	A/R
13	124-145-2	<b>SEAL, O-RING 908 (for 3/4-16 threaded valve) (Use to replace o-ring of existing valve; replacement valves come with an o-ring.)</b>	A/R
14	124-235-2	<b>SEAL, O-RING 0.468ID x 0.078 (for 1170-AA PLUMBING PLUG 9/16" SAE)</b> (Use to replace o-ring of existing plug) (Plug not ill. - side not shown)	A/R



## UPPER RX CONSOLE

REFER TO NEXT SHEET FOR PARTS DESCRIPTION LISTING

## PARTS DESCRIPTION LISTING

Form 5-41, 09-19a

Sheet 8 of 12

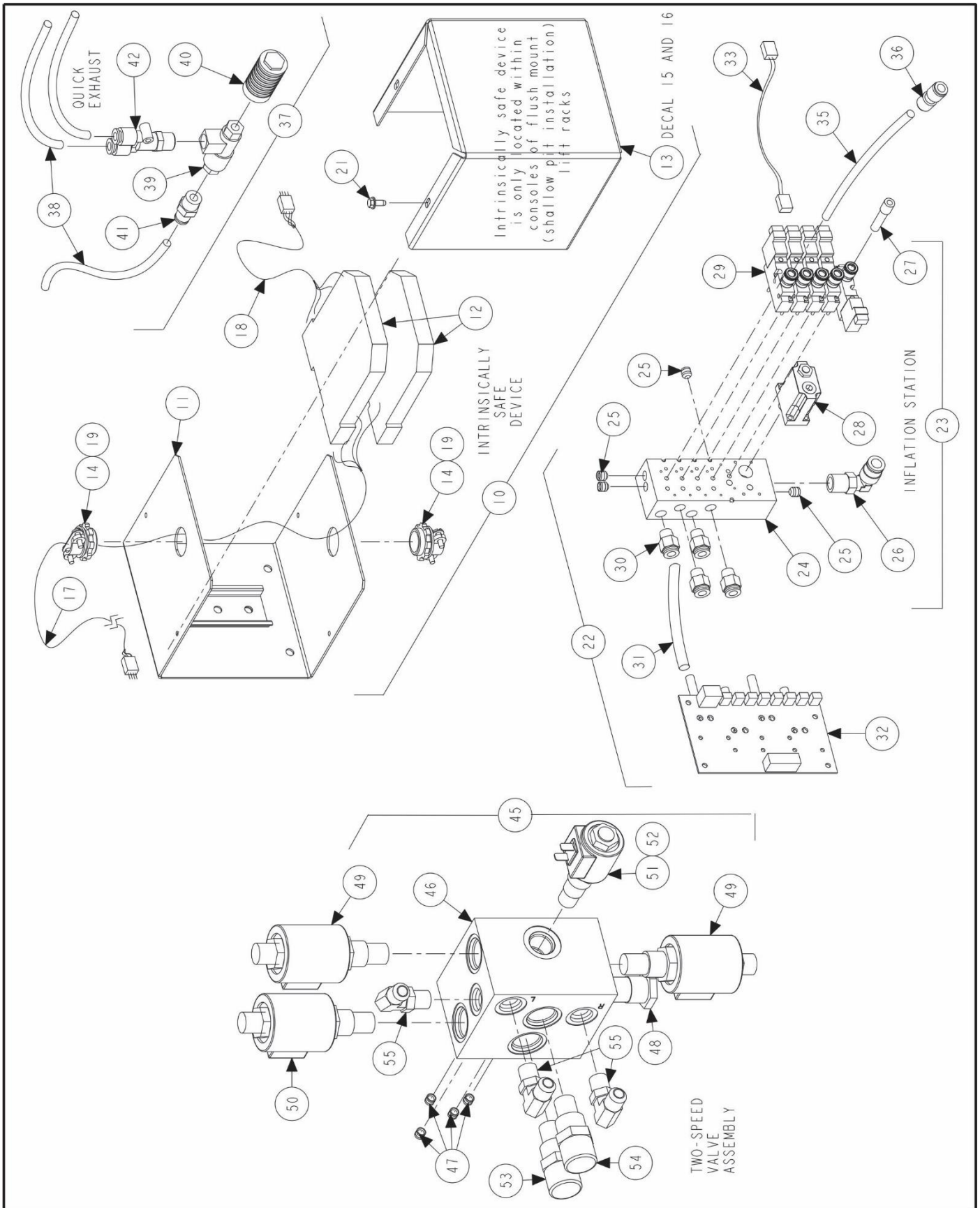
Index No.	Part Number	Description	Qty.
1	30-558-1-IS/PS	CONSOLE, UPPER RX-IS ( -IS, -PS, -ISF, -PSF)	
2	11-1436-2	SUPPORT, CONSOLE CONTROL PANEL	1
3	105-712-1-005	HOUSING, ASSEMBLY-RX CONSOLE	1
4	75-32-2	ROUND HEAD MACHINE SCREW 8-32 X 3/8 INCH	4
5	76-343-2	NUT-LOCK 8-32 NYLON INSERT	5
6	18-608-2	OVERLAY, MAIN PUSHBUTTON PANEL	1
7	18-609-2	SWITCH, FEATURE PANEL PS (-PS only)	1
OR	18-610-2	SWITCH, FEATURE PANEL PS, IS (-IS only)	1
8	141-93	EXTRUSION, DIN RAIL	1
9	76-262-2	NUT-LOCK 8-32 NYLON INSERT	4
10	18-536-2	CONTACTOR/NOISE SUPPRESSOR	1
11	45-1105-1	PCA-RACK INFLATION CONTROL (infl brd)(-IS only)	1
12	75-102-2	PAN HEAD MACHINE SCREW 6-32 X .25 INCH	8
13	45-1339-1	PCA, RX16 INTERCONNECT (sw brd)	1
14	66-28-2	SEPARATOR, LIGHT BAFFLE	1
15	163-112-2	LENS, LIGHT DIFFUSION	1
16	18-257-2	SWITCH, OPERATOR	3
17	75-359-2	PAN HEAD SHEET METAL SCREW 6X.38 INCH TRILOBULAR	4
18	77-27-2	WASHER-FLAT 10	5
19	48-56-2	RIVET, BLIND 3/16 X 1/4 INCH	5
20	70-154-1	HARNESS ASSEMBLY, LIFT CONSOLE (J18 main)	1
21*	38-1057-1	CABLE, RACK INFLATION CONTROL (J2 infl – J3 sw brd)(-IS only)	1
22	35-148-1	LED ASSEMBLY, RX CONSOLE (J8 sw brd)	1
23	38-1314-1	CABLE ASSEMBLY, RX INTERFACE (J3 main brd – J1 sw brd)	1
24	70-152-1	HARNESS, (BEEPER) RX40 (J5 sw brd)	1
25	40-178-1	TRANSFORMER, LIFT RACK RX (J14 main brd <b>and terminal A1 &amp; B1</b> )	1
26*	38-1092-1	CABLE, SLIP PLATE LOCK MANIFOLD (J15 main brd)	1
27*	37-721-1	WIRE ASSEMBLY, RX INFL POWER (J19 main brd – J1 infl brd)(-IS only)	1
28	37-718-1	WIRE ASSEMBLY, ON/OFF PUMP (J11 main brd)	1
29	37-719-1	WIRE ASSEMBLY, RX POWER SWITCH	1
30*	38-1058-1	CABLE, RACK INFLATION I/O (J17 main brd– J2 infl main brd) IS Only	1
31*	38-1085-3	CABLE ASSEMBLY, 12 PIN RX INTERCONNECT (J2 main – J6 sw brd)	1
32	48-99-2	RIVET, .080 INCH DIAMETER PLASTIC SNAP	2
33	21-263-2	CONN, MOLEX 6 .1 HOUSING	1
34	128-511-2	DECAL, GROUND (EARTH)	1
35	141-28-2	EXTRUSION, PANEL OPENING	14 IN
36	18-270-2	SWITCH, DOUBLE PULL SINGLE THROW ROCKER	1
37*	45-1343-1	PCA, RX RACK CONTROL (main brd)	1
38	75-173-2	ROUND HEAD MACHINE SCREW 6-32 X 5/8 INCH	3
39	38-1005-1	CABLE, GROUNDING 33 INCH	1
40	12-27-2	CLAMP, CABLE 1/2 INCH	3
41	69-1417-2	COVER, PANDUIT WIRE DUCT TRAY	8 IN
42	69-1416-2	COVER, PANDUIT WIRE DUCT TOP	8 IN
43	19-290-2	TERMINAL STRIP, 4 POSITION	2
44	19-291-2	TERMINAL STRIP, JUMPER 4POS	2
45	76-511-2	NUT, UNDERSIZED HEX 6-32	4
46	77-12-2	WASHER, LOCK 6 INTERNAL TOOTH	4
47	45-1549-1-2	RADIO MODULE POD / CODELINK P3	1
48*	38-1342-1	CABLE ASSEMBLY, RX XF COMUNICATION (J39 main – J16 sw brd)	1
49	75-251-2	ROUND HEAD MACHINE SCREW 2-56 X 3/8 INCH	1

\* Cables and wiring connected to main board include items 21, 26, 27, 30, 31 and 48.



11250 HUNTER DRIVE BRIDGETON, MO 63044

PPP-Paint Code Required  
A/R-As Required  
REF-Reference



## RX CONSOLE COMPONENTS

REFER TO NEXT SHEET FOR PARTS DESCRIPTION LISTING

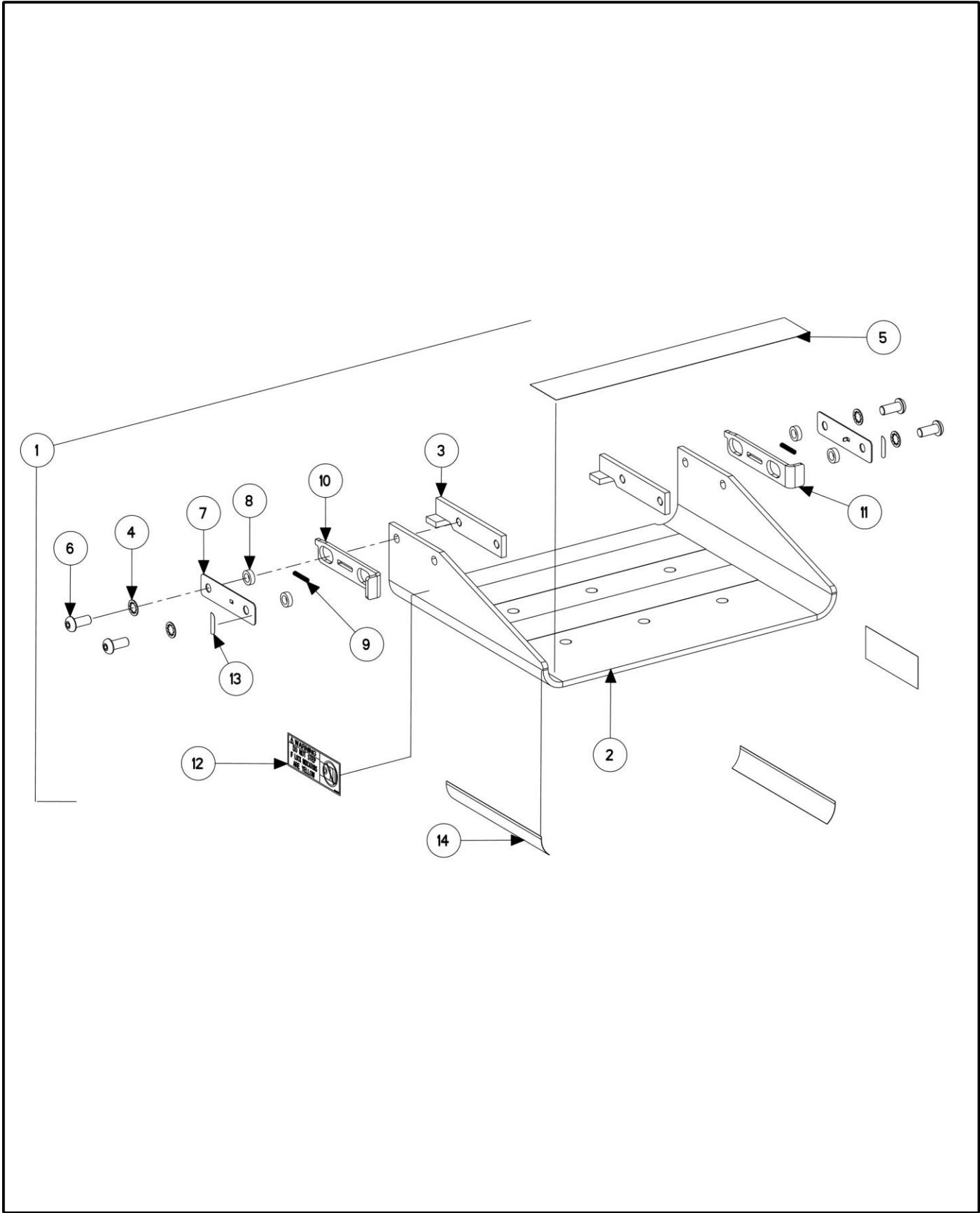
PARTS DESCRIPTION LISTING

Index No.	Part Number	Description	Qty.
10	232-219-1	ELEC ENCL, INTRINSICALLY SAFE DEVICE (Flush Only) (Cons. Of:)	1
11	67-692-1	BOX ASSEMBLY, WELDED	1
12	232-245-2	INTRINSICALLY SAFE BARRIER	2
13	67-691	BOX, TOP INTRINSICALLY SAFE DEVICE	1
14	12-27-2	CLAMP, CABLE 1/2 INCH	2
15	128-1166-2	DECAL, HAZ LOCATION INTERNAL	1
16	128-1168-2	DECAL, BARRIER-TO-SENSOR	1
17	38-1122-1	CABLE ASSEMBLY, INTRINSICALLY SAFE BARRIER TO CONSOLE	2
18	38-1123-1	CABLE ASSEMBLY, INTRINSICALLY SAFE BARRIER TO SENSOR	2
19	113-281-2	BUSHING, FLEX CONDUIT, CABLE	2
20	94-11-2	TIE-CABLE (Not Illustrated)	2
21	75-327-2	SCREW, SELF TAPPING 8-32 X 1/2 INCH	2
22	185-28-1	MANIFOLD ASSEMBLY, SENSOR AIR (Consisting Of:)	1
23	108-199-1	MANIFOLD ASSEMBLY, INFLATION STATION (Consisting Of:)	1
24	185-24-2	MANIFOLD, RACK INFLATION (Not Available)	1
25	145-336-2	FITTING, EXPANSION PLUG	4
26	145-183-2	FITTING, 1/4 INCH NPT ELBOW SWIVEL	1
27	145-394-2	1/4 INCH PORT PLUG	1
28	136-79-2	REGULATOR MANIFOLD MOUNT AND FITTING	1
29	108-195-2	VALVE, 3-PORT MANIFOLD MOUNT	5
30	145-354-2	FITTING, 1/4 INCH TUBE - 1/8 INCH NPT	4
31	16-864-2	TUBING, AIR .17 INCH I.D. .25 INCH O.D. POLYURETHANE	24 IN.
32	45-1103-1	PCA, RACK INFLATION I/O	1
33	38-1090-1	CABLE ASSEMBLY, RX MANIFOLD	5
34	94-11-2	TIE-CABLE (Not Illustrated)	4
35	16-423-2	TUBE, AIR .172 INCH INSIDE DIAMETER	6 FT.
36	145-381-2	FITTING, 5/16 INCH TO 1/4 INCH UNION PTC	4
37	20-3473-1	KIT, RXK RACK INSTALLATION (Not Illustrated) (Includes:)	1
38	16-423-2	TUBE, AIR .172 INCH INNER DIAMETER (1/4 OUTSIDE DIAMETER)	80 FT.
39	108-101-2	VALVE, QUICK EXHAUST AIR JACK	1
40	145-290-2	FITTING, 1/4 INCH NPT EXHAUST SILENCER	1
41	145-273-2	FITTING, 1/4 INCH HOSE X 1/4 INCH NPT	1
42	145-334-2	FITTING, Y 1/4 INCH NPT TO 1/4 INCH TUBE	1
43	145-310-2	FITTING-1/4 INCH NPT HEX NIPPLE (Not Illustrated)	1
44	136-96-2	FILTER / REGULATOR, RX 150 PSI (Not Illustrated)	1
45*	108-266-3	VALVE ASSEMBLY, 2 SPEED LOWER (Consisting Of:)	1
46	185-30-2	MANIFOLD, 2 SPEED LOWER (Not Available)	1
47	145-336-2	FITTING, EXPANSION PLUG	4
48	108-129-2	VALVE, FLOW DIVIDER RLHD	1
49	108-268-2	VALVE, 2 WAY BLOCKING POPPET	2
50	108-269-2	VALVE, 2 WAY NORMALLY OPEN	1
51	108-267-2	VALVE, 3 WAY SOLENOID	1
52	145-371-2	FITTING .PLUG ORIFICE RMHD (Flow regulator installed in port before valve)	1
53	108-194-2	VALVE, FLOW CONTROL 3.5 GPM	1
54	108-207-2	VALVE, FLOW CONTROL 2.5 GPM	1
55	145-335-2	FITTING, O-RING ELBOW	3
56	145-403-2	FITTING, 1/4 TO 5/32 INCH	REF

**IMPORTANT NOTE WHEN ORDERING REPLACEMENT POWER UNIT AND MANIFOLD PARTS:**

When servicing the manifold, the individual parts should be replaced, not the entire manifold assembly. It is important to verify the existing equipment in the lift being serviced.





**WORKSTEP**

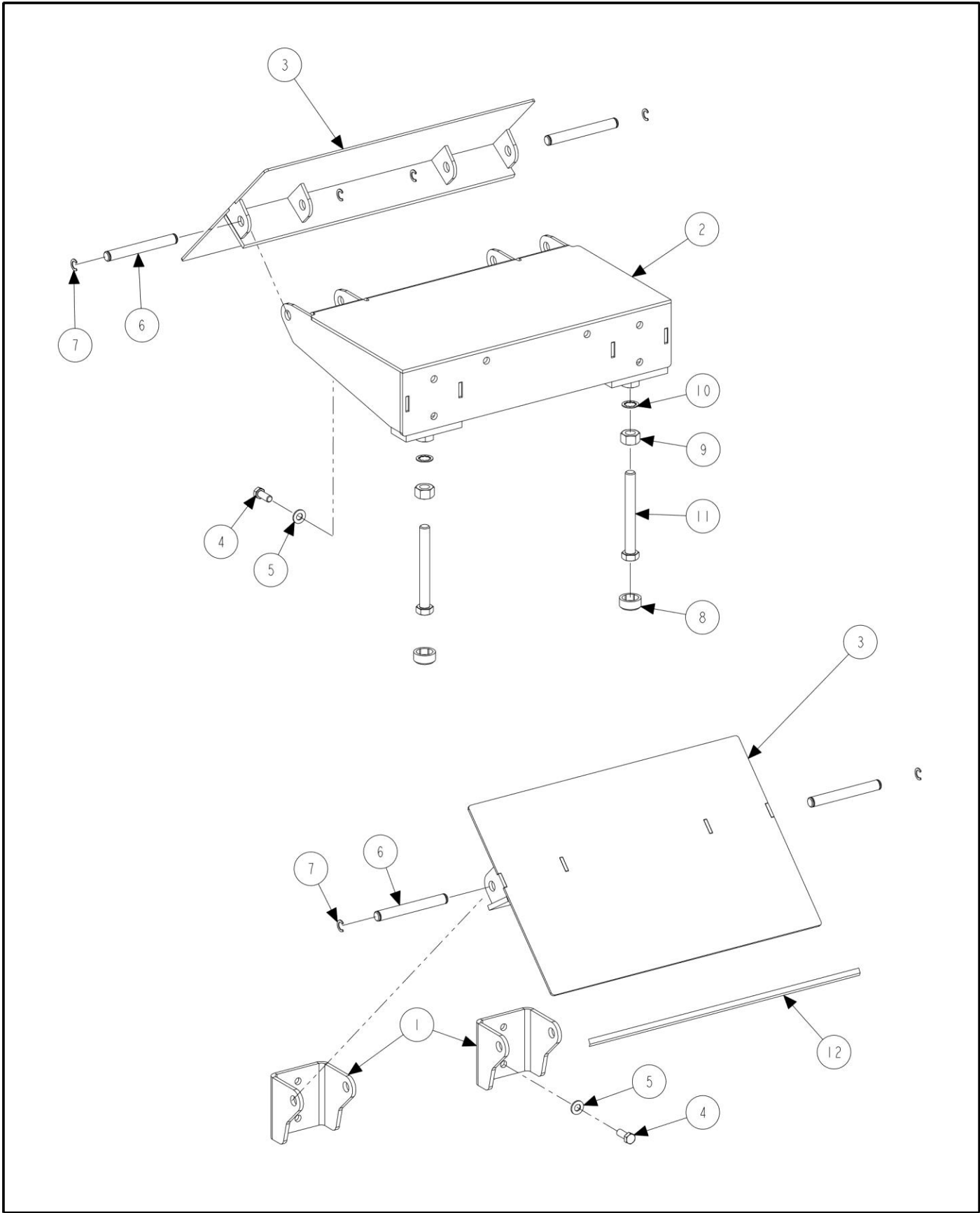
**REFER TO NEXT SHEET FOR PARTS DESCRIPTION LISTING**

## PARTS DESCRIPTION LISTING

Form 5-41, 09-19a

Sheet 10 of 12

Index No.	Part Number	Description	Qty.
1	51-1696-1	PLATE, WORKSTEP ASSEMBLY (Consisting Of:)	1
2	51-1668	PLATE, WORKSTEP	1
3	14-886-1-005	BRACKET, WORKSTEP HANGER	2
4	77-21-2	WASHER, LOCK 3/8 INCH INTERNAL TOOTH	4
5	162-105-2	TAPE, 2 INCH X 13 INCH NON-SKID	3
6	74-433-2	SOCKET BUTTON HEAD CAP SCREW 3/8-16 X .88 INCH	4
7	69-1083-2	COVER, WORKSTEP LOCK	2
8	46-529-2	SPACER, LOCK GUIDE	4
9	98-398-2	SPRING, WORKSTEP LOCK	2
10	144-79-2	LOCK, WORKSTEP LH	1
11	144-80-2	LOCK, WORKSTEP RH	1
12	128-1005-2	DECAL, WORKSTEP LOCK ENGAGEMENT	2
13	128-1006-2	DECAL, LOCK ENGAGE INDICATOR	2
14	128-245-2	DECAL, YELLOW AND BLACK	2



**FLUSH-MOUNT RAMPS**

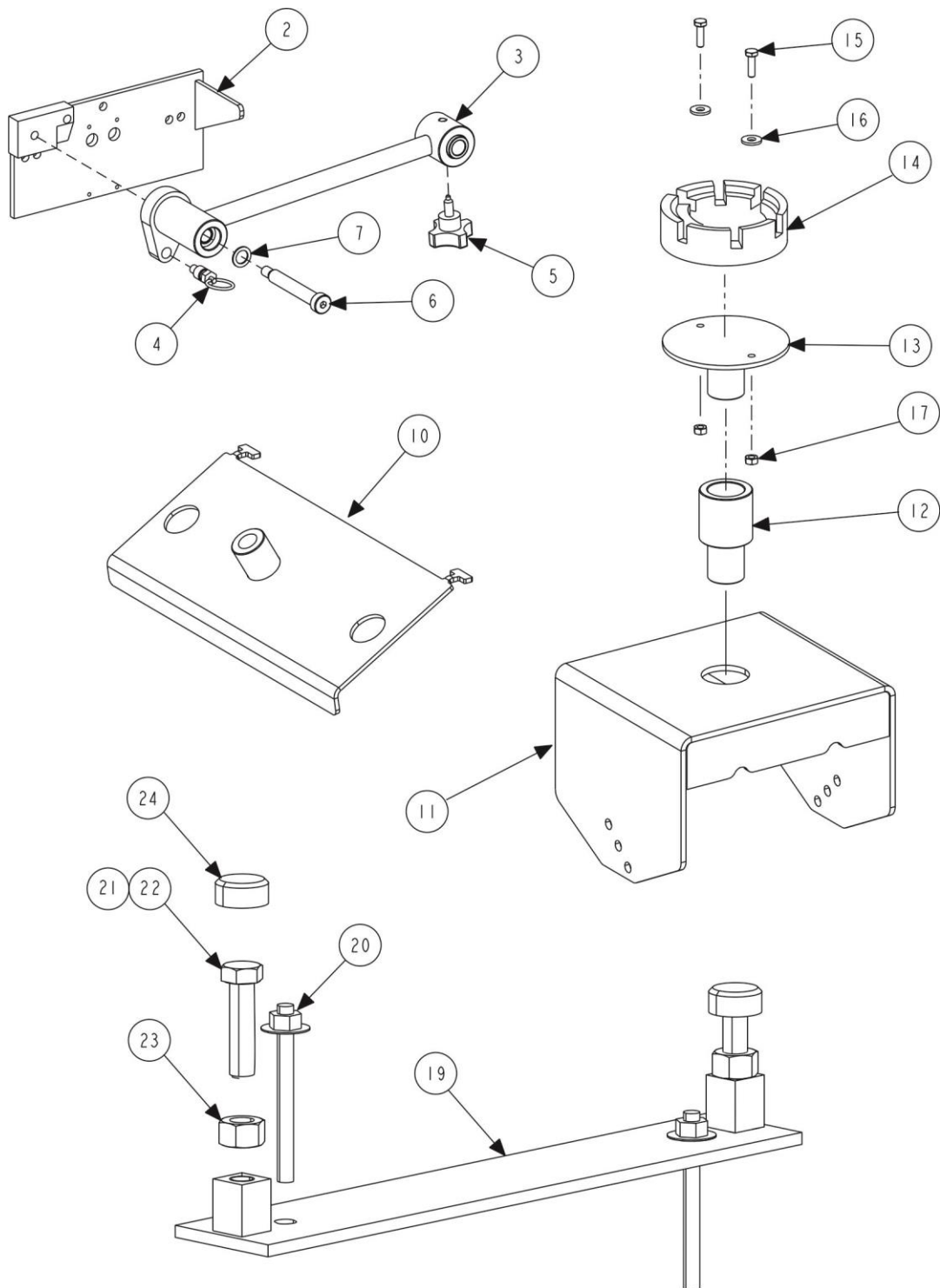
REFER TO NEXT SHEET FOR PARTS DESCRIPTION LISTING

## PARTS DESCRIPTION LISTING

Form 5-41, 09-19a

Sheet 11 of 12

Index No.	Part Number	Description	Pit Qty.
1	14-1226-PPP	BRACKET, RAMP RX10	4
2	51-2464-1-PPP/-ZPP	PLATE, RAMP EXTENSION	2
3	147-141-1-PPP/-ZPP	RAMP, PIT STYLE	4
4	74-11-2	HEX HEAD CAP SCREW 1/2-13 X 1.25 INCH GRADE 5	8
5	77-23-2	WASHER, FLAT 1/2 INCH	8
6	97-583-2	SHAFT, RAMP CONNECTION	8
7	112-11-2	SNAP RING #5133-75	16
8	53-64-2	CAP, BOLT	4
9	76-39-2	NUT, HEX 3/4-10	4
10	77-50-2	WASHER, LOCK 3/4 INCH INTERNAL TOOTH	4
11	74-481-2	HEX HEAD CAP SCREW 3/4-10 X 6.00 INCH	4
12	113-274-2	BUSHING, EDGING PIT RAMP (cut into 2-foot pieces)	8 FT
13	20-2267-1	KIT, IS-P HOSE REEL FILLER PLATES (Not Illustrated)	1
14	51-2308-1	PLATE, PIT HOSE REEL COVER	4
15	74-423-2	BOLT, ANCHOR 1/4 X 2 1/4 INCH HAMMER	16



## MERCEDES-BENZ AND BMW UNIQUE COMPONENTS

REFER TO NEXT SHEET FOR PARTS DESCRIPTION LISTING

**MKS BRACKETS AND SWING AIR JACK CENTER SUPPORT KIT (MB only)**

Index No.	Part Number	Description	Qty.
	20-3526-1MB36	KIT, MKS BRACKETS / SJ CENTER SUPPORT (Consisting Of:)	1
1	14-949-1-PPP	MKS SYSTEM LEFT FRONT BRACKET (Consisting Of:)	1
OR	14-950-1-PPP	MKS SYSTEM RIGHT FRONT BRACKET (Consisting Of:)	1
OR	14-955-1-PPP	MKS SYSTEM LEFT REAR BRACKET (Consisting Of:)	1
OR	14-956-1-PPP	MKS SYSTEM RIGHT REAR BRACKET (Consisting Of:)	1
2	14-947-1-PPP	MKS MOUNT LEFT BRACKET (Consisting Of:)	1
OR	14-948-1-PPP	MKS MOUNT RIGHT BRACKET (Consisting Of:)	1
3	103-107-1-PPP	ARM ASSEMBLY, MKS LEFT	1
OR	103-106-1-PPP	ARM ASSEMBLY, MKS RIGHT (Includes:)	1
4	135-345-2	PIN, HAND RETRACTABLE PLUNGER	1
5	34-161-3	KNOB, M8 STUD	1
6	74-354-2	BOLT, SHOULDER 1/2 x 3 INCH	1
7	77-185-2	WASHER, SPRING 1/2 INCH CURVED	1
8	75-929-2	SOCKET BUTTON HEAD CAP SCREW 1/4-20 X 2.5 INCH	12
9	76-85-2	NUT, KEPS 1/4-20	12
10	14-952-1-PPP	BRACKET ASSEMBLY, JACK PAD STORAGE	1
11	175-290-1-PPP	ADAPTER, JACK SADDLE	1
12	175-292-2	ADAPTER, JACK PAD RISER	1
13	175-293-1	ADAPTER ASSEMBLY, JACK PAD	1
14	175-294-2	ADAPTER, RUBBER JACK PAD	1
15	75-84-2	HEX HEAD CAP SCREW 1/4-20 X .88 INCH	2
16	77-67-2	WASHER, FLAT 1/4 INCH	2
17	76-17-2	NUT, GRIP 1/4-20	2
18	74-95-2	BOLT, STOP 3/8-16 X .44 INCH (Not Illustrated)	2

**FLOOR LEVELING KIT (MB and BMW only)**

Index No.	Part Number	Description	Qty.
	20-3524-1	KIT, RX12KMB FLOOR LEVELING PLT (Consisting Of:)	1
19	51-2889-1-005	PLATE, LEVELING BASE	4
20	74-170-2	BOLT, ANCHOR 1/2 X 5.50 INCH	8
21	74-481-2	HEX HEAD CAP SCREW 3/4-10 X 6.00 INCH FULL-THREAD	8
22	74-49-2	HEX HEAD CAP SCREW 3/4-10 X 4.00 INCH FULL-THREAD	8
23	76-39-2	NUT, HEX 3/4-10	8
24	53-64-2	CAP, BOLT	8
25	128-245-2	DECAL, YELLOW & BLACK	8